



## **Contents** [ [hide](#) ]

- [1 POSIFLEX PS-6215 LCD Touch Terminal](#)
- [2 Product Specifications](#)
- [3 Product Usage Instructions](#)
- [4 Package Contents](#)
- [5 FCC NOTES](#)
- [6 WARRANTY LIMITS](#)
- [7 Terminal from shipping mode to operation mode](#)
- [8 Terminal from operation mode to shipping mode](#)
- [9 Overviews of the PS-6215/6216](#)
- [10 View of I/O Interface](#)
- [11 Installing Optional Upgrade Kits and Peripherals](#)
- [12 Connecting Power Adapter and I/O Cables](#)
- [13 Powering ON the PS-Series POS Terminal](#)
- [14 Power LED Indicator The](#)
- [15 Installing an Operating System](#)
- [16 Operating System Recovery](#)
- [17 Driver Download](#)
- [18 Operation Environment](#)
- [19 Specifications](#)
- [20 Outline Dimension](#)
- [21 FAQ](#)
- [22 Documents / Resources](#)
  - [22.1 References](#)

# POSIFLEX PS-6215 LCD Touch Terminal



## Product Specifications

- **Model:** PS-6215/6216
- **Type:** LCD Touch Terminal
- **Package Contents:**
  - LCD touch terminal x1
  - Power adaptor x1
  - Power cord x1
  - Recovery DVD x1 (for pre-loaded OS model only)

## Product Usage Instructions

### Terminal from shipping mode to operation mode:

1. Lift the terminal gently to unfold it.
2. Overturn the terminal in the direction indicated by the arrow.
3. Place the terminal on a flat table.
4. Tilt the terminal to a degree in the direction indicated by the arrow.
5. Remove the cable cover from the base.
6. Fix the base with two #6/32 screws.
7. Push the cable cover back to the base.

## **Terminal from operation mode to shipping mode:**

1. Remove the cable cover.
2. Carefully hold the lower rim of the display.
3. Push the base-folding lever in the indicated direction to loosen and lower the display.
4. When the display goes down, gently tilt it until well folded.
5. Put back the cable cover.

## **Package Contents**

- **LCD touch terminal** (x1)
- **Power adaptor** (x1)
- **Power cord** (x1)
- **Recovery DVD** x1) (for pre-loaded OS model only)

The appearance of the product may be somewhat different from that of the actual product, so the appearance of this product should be based on that of physical products. The contents in this manual may be updated at any time without prior notice.

## **FCC NOTES**

This equipment has been tested and found to comply with the limits for a Class A digital device, pursuant to part 15 of the FCC Rules. These limits are designed to provide reasonable protection against harmful interference when the equipment is operated in a commercial environment. This equipment generates, uses, and can radiate radio frequency energy and, if not installed and used according to the instruction manual, may cause harmful interference to radio communications. Operation of this equipment in a residential area is likely to cause harmful interference, in which case the user will be required to correct the interference at his own expense.

This device complies with part 15 of the FCC Rules. Operation is subject to the following two conditions:

1. This device may not cause harmful interference
2. this device must accept any interference received, including interference that may cause undesired operation.

## **CE CLASS A WARNING**

This equipment is compliant with Class A of CISPR 32. In a residential environment, this equipment may cause radio interference.

## **WARRANTY LIMITS**

Warranty will terminate automatically when the machine is opened by any person other than the authorized technicians. The user should consult his/her dealer for the problem happening. Warranty voids if the user does not follow the instructions for the application of this merchandise. The manufacturer is by no means responsible for any damage or hazard caused by improper application.

## **SAFETY INSTRUCTIONS**

This equipment is not suitable for use in locations where children are likely to be present.

### **WARNING**

The power cord shall be connected to a socket outlet with an earthing connection.

### **BATTERY WARNING**

Risk of explosion if the battery is replaced with an incorrect type. Dispose of the expended battery according to local disposal regulations.

## **Terminal from shipping mode to operation mode**

In consideration of proper packaging, before shipping, the terminal is folded, staying in shipping mode. Thus, when receiving the product, you will find that the terminal is well folded, as shown below.



Before operating this terminal, unfold it and make this terminal rise in operation mode by referring to the following steps. Here, an equivalent model with a GEN 7 base is taken below, for example.

1. Firstly, lift this terminal gently to unfold it to be unfolded.



2. Overturn this terminal in the direction indicated by the arrow in the right figure.



3. Place this terminal on a flat table.



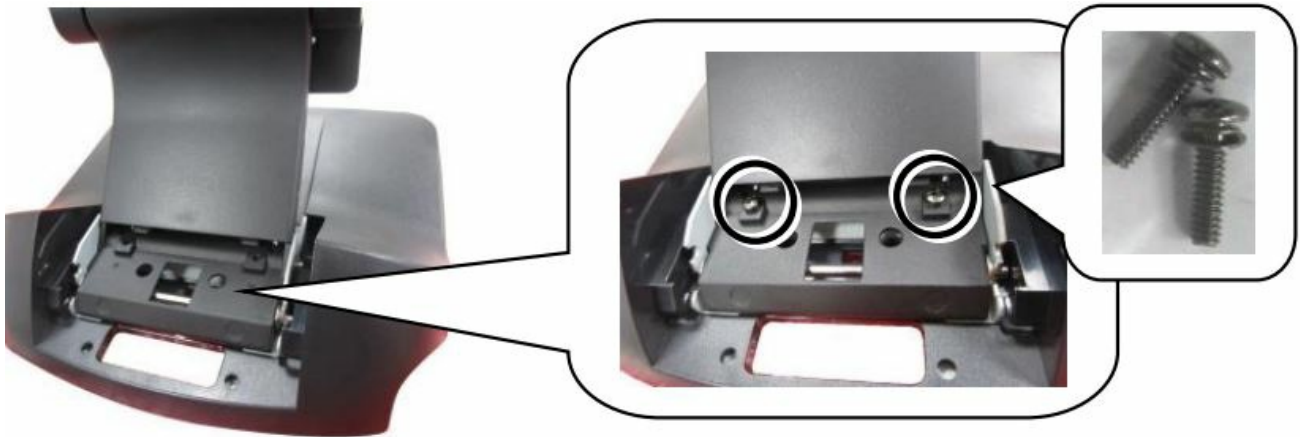
4. Tilt this terminal to a degree in the direction indicated by the arrow below.



5. Remove the cable cover from the base.



6. Fix the base with two #6/32 screws.



7. Push the cable cover back to the base.



## Terminal from operation mode to shipping mode

To fold this terminal, refer to the following steps. Here, an equivalent model with a GEN 7 base is below, ow for example.

1. Remove the cable cover.



2. Carefully hold the lower rim of the display.



3. Push the base-folding lever in the direction indicated by the arrow below (1). Then, the display will be loosened and go down (2).



4. When the display goes down to a degree, lose the base-folding lever, as shown in the direction indicated by the arrow below.



5. Then, gently tilt the display in the direction indicated by the arrow below until the display is well folded.



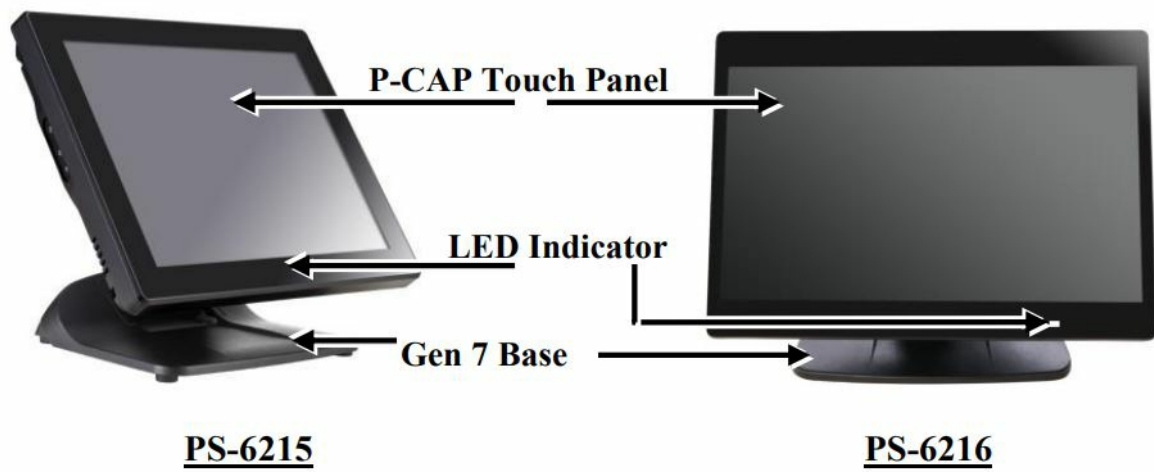
6. Put back the cable cover.



## Overviews of the PS-6215/6216

### Front View





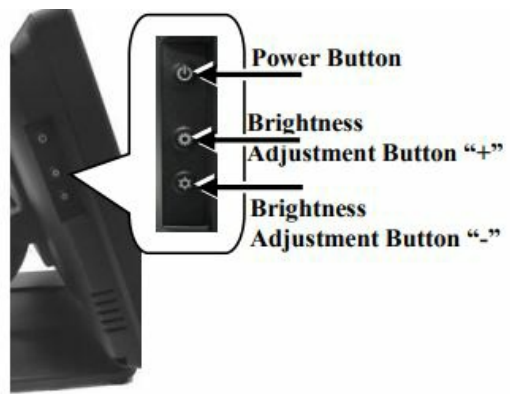
## Rear View



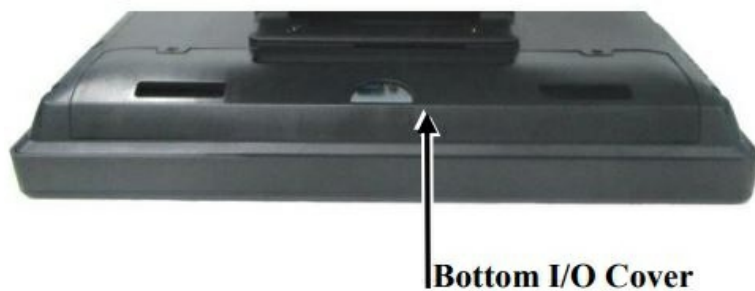
## Left Side View



## Right Side View

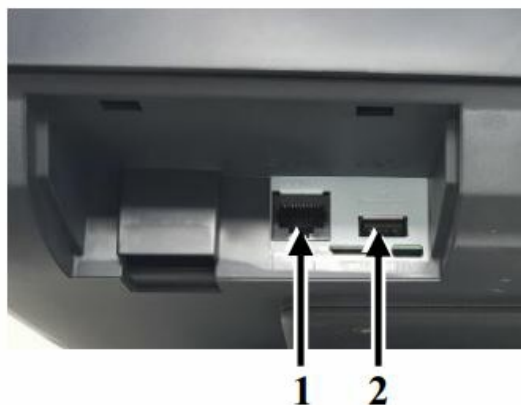


## Bottom View



## View of I/O Interface

### Top I/O Ports



1. COM4 Port
2. USB 2.0 Port

The top I/O ports are provided for COM-based and USB-based peripheral devices, for example, a customer display.

### Bottom I/O Ports



1. 12V DC-IN power jack
2. Cash drawer port
3. COM port (COM1/2)
4. USB 3.0 ports
5. USB 2.0 ports
6. RJ45 LAN port
7. HDMI port

**Note:** The terms HDMI, HDMI High-Definition Multimedia Interface, HDMI trade dress, and the HDMI Logos are trademarks of HDMI Licensing Administrator, Inc.

## Installing Optional Upgrade Kits and Peripherals

- PS-6215/6216 can work with multiple optional upgrade kits and peripheral devices, such as a magnetic stripe reader (MSR), an LCD monitor, a cash drawer, and the like.
- Before installing an optional upgrade kit and/or peripheral device, make sure that the system is powered off and the external power source is removed from the POS box to prevent electrical hazard! Failure to follow the warning description will void the product warranty!
- For detailed instructions, refer to each of the user manuals of the optional upgrade kits and peripheral devices.

## Connecting Power Adapter and I/O Cables

Before connecting the power adapter and I/O cables to the I/O ports of the PS series terminal, please route and arrange the cables. Refer to the following step-by-step instructions for cable routing and arrangement for the details. Here, an equivalent model with a GEN 7 base is taken below for example.

1. Press the circled section of the cable cover with your thumb.



2. Pull out the cable cover.



3. Push and tilt the terminal to the end in the direction shown by the arrow. Then determine that the terminal is tilted to the end, as shown in the right figure.



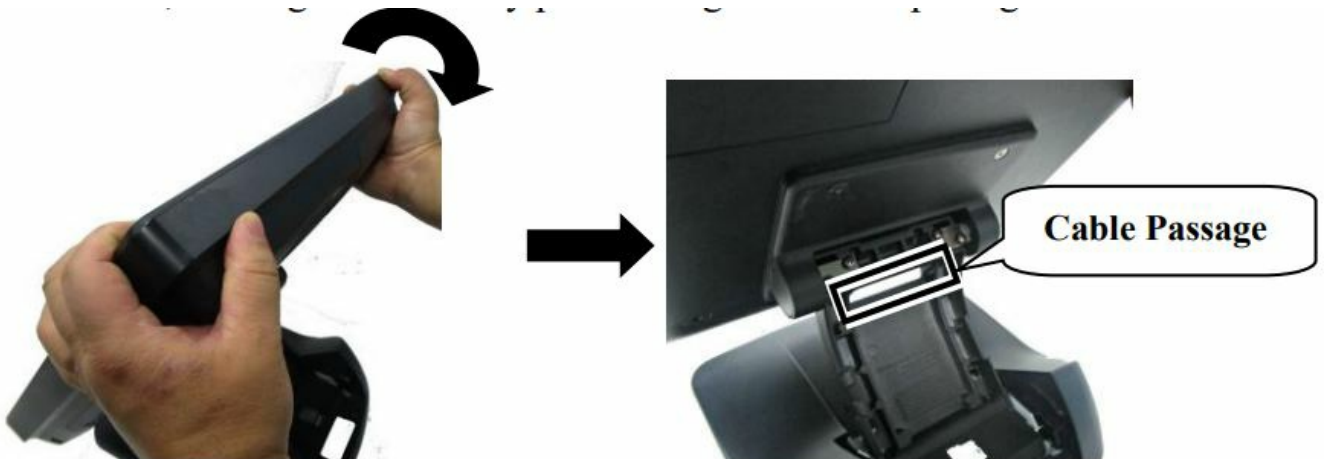
4. Press the circled section with two thumbs and pull by force the two sides of the locking hook with two forefingers as indicated by the arrow.



5. Remove the neck cover from the base stand.



6. Tilt the terminal slightly at a little angle in the direction as shown by the arrow, making cables easily pass through the cable passage.



7. Make the connector, which will be connected to the I/O port of the terminal, pass through the cable passage of the base stand.



8. Push and tilt the terminal to the end in the direction shown by the arrow.



9. Remove the bottom I/O cover with your forefinger, inserting the middle hole of the cover.



10. Connect the connector of the power adapter to the 12VDC-IN power jack.



11. Cover the bottom I/O interface and gather the I/O cables to the circled cable arrangement area, as shown below.



12. Push and tilt the terminal to the end in the direction shown by the arrow.



13. Arrange the I/O cable located in the area of the neck cover.

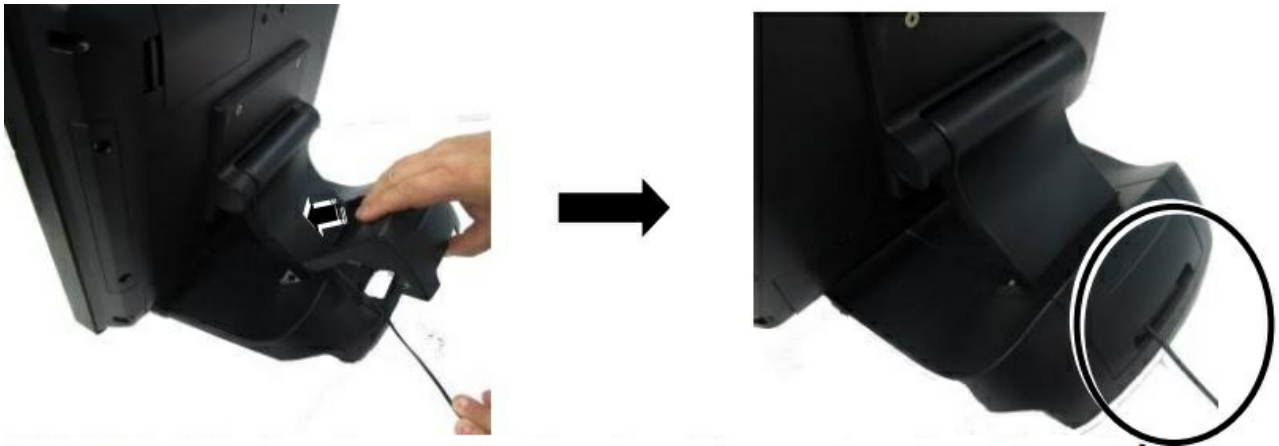


14. Shield the I/O cable arrangement area on the neck of the base stand with the neck cover.





15. Shield the I/O cable exposure area with the cable cover.



**CAUTION:** On doing insertion or extraction of a cable connector, please always hold the connector head itself instead of pulling the cable wire. Doing this could damage the cables and ports, which is considered artificial damage and is not covered by the warranty. The means of power cord should be connected to a socket outlet with an earthing connection.

## Powering ON the PS-Series POS Terminal

- After connecting the power cable to the power jack of the terminal, press the power button to turn on the terminal. To power it off, press the power button again.
- Once you power off the system, if you want to power it on again, please wait at least 3 seconds.





- If the system hangs for a reason, such as a software resource conflict, please press and hold the power button for over 10 seconds to forcibly shut down the system.

## Power LED Indicator The

LED status indicator is mainly responsible for notifying users of the current system status by emitting various LED signals. The table provided below shows all the possible LED statuses as a quick reference.

LED	Status	Description
POWER	Solid blue	System power ON
	Solid orange	System standby

## Installing an Operating System

This product is highly professional equipment. Therefore, we do NOT encourage you to install any operating system on this machine without professional assistance. We shall not be responsible for any technical support regarding questions on this aspect. We suggest that you contact your dealer for OS installation.

## Operating System Recovery

- For the PS-6215/6216 main system preloaded with an operating system on HDD or SSD, we provide a recovery DVD shipped with the main system for the preloaded operating system. The system integrator shall take care of software restoration after the OS is recovered.
- If you plan to recover your operating system, we do NOT encourage you to recover

any operating system. Please contact your service center for operating system recovery.

## Driver Download

If your POS terminal is shipped without OS pre-installed, please download the relevant driver that you need from the website or contact your dealer or service team.

## Operation Environment

This terminal must NOT be operated in an environment with restricted ventilation. There must be at least 25 mm air clearance around any top or side ventilation holes with free flow of air around the unit at all times for system operation.

## Specifications

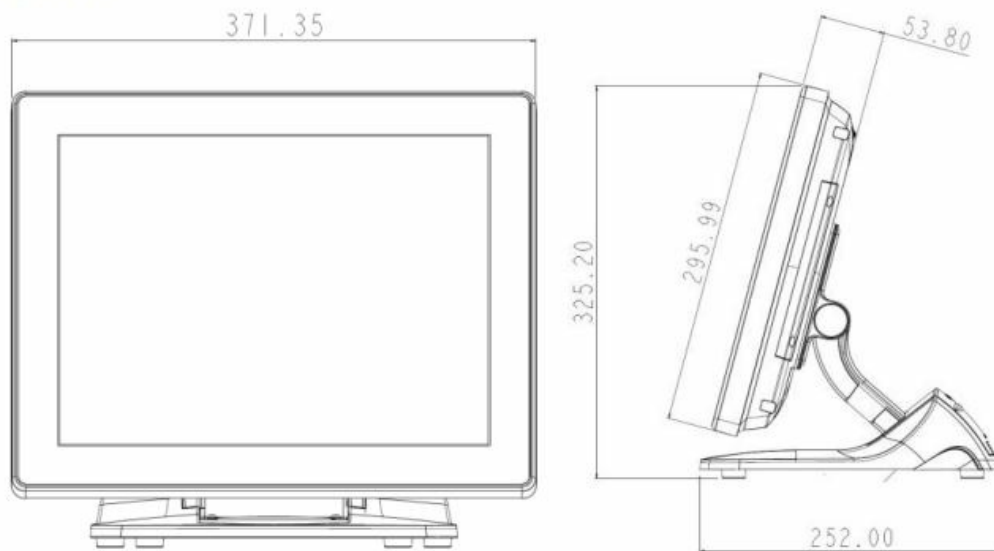
Model		PS-6215/6216
System Configuration	Processor	Intel TGL i3/i5/i7 CPU
	System Memory	DDR4 SO-DIMM x 2, max. 64 GB
	Storage Device	M.2 connector x 1 (Support SATA III signal)
	Power Supply	12V/60W
	OS support	Windows 10 IoT LTSC/ Windows 11 IoT LTSC
	Fan	1 x cooling fan
Display & Touch	LCD	<b>PS-6215:</b> 15" (1024×768) with LED backlight <b>PS-6216:</b> 15.6" (1366×768) with LED backlight
	Touch	P-CAP Touch

I/O & Expansion	Serial Port	3, 2 x DB9 on bottom I/O plate + 1 x RJ50 on top I/O plate, 5V/12V support on all COM ports
	Standard USB Port	7, 4 x USB3.0 + 2 x USB2.0 on bottom I/O plate + 1 x USB2.0 on top I/O plate
	Powered USB Port	Via PU490 in GEN8 base
	LAN Port	10 / 100 / 1000 Mb x 1
	Display Port	HDMI port  <b>Note: The terms HDMI, HDMI High-Definition Multimedia Interface, HDMI trade dress, and the HDMI Logos are trademarks of HDMI Licensing Administrator, Inc.</b>
	CR Port	1, control 2 CR
	Audio	Buzzer + 1 x internal 2W speaker
	Expansion Slot	1 x M.2 (M.2 2230 / E Key)
Mechanical	Dimension	<b>PS-6215:</b> 371.3 x 252 x 325.2 mm <b>PS-6216:</b> 371.3 x 252 x 290.4 mm
	Net Weight	<b>PS-6215:</b> 5.86 kg <b>PS-6216:</b> 4.7 kg
	Base Stand	7th generation foldable base stand
Environmental	Operating Condition	0°C – 40°C, 20%RH – 90%RH

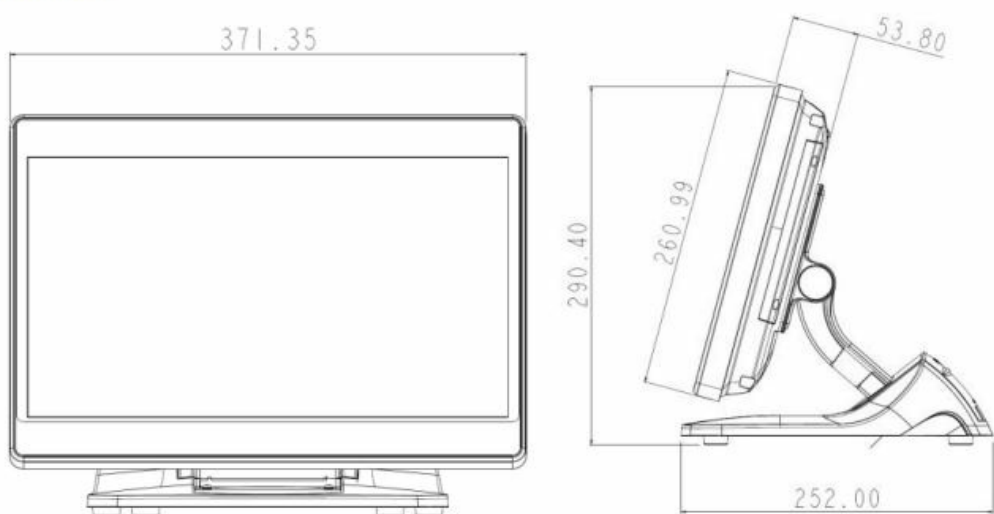
	Storage Condition	-20°C – 60°C, 10%RH – 90%RH
--	-------------------	-----------------------------

## Outline Dimension

PS-6215



PS-6216



## FAQ


- **What should I do if my product is in shipping mode?**

Follow the steps provided in the manual to transition the terminal from shipping mode to operation mode.

- **Can I replace the battery myself?**

It is recommended to consult authorized technicians for battery replacement to avoid any risks of explosion or damage.

# Documents / Resources

	<p><a href="#">POSIFLEX PS-6215 LCD Touch Terminal [pdf]</a> User Manual</p> <p>PS-6215, PS-6215 LCD Touch Terminal, LCD Touch Terminal, Touch Terminal, Terminal</p>
---	---

## References

- [User Manual](#)

📁 POSIFLEX    💎 LCD Touch Terminal, POSIFLEX, PS-6215, PS-6215 LCD Touch Terminal, Terminal, Touch Terminal

---

## Leave a comment

Your email address will not be published. Required fields are marked \*

Comment \*

Name

Email

Website

☐ Save my name, email, and website in this browser for the next time I comment.

[Post Comment](#)

## Search:

[Search](#)

[Manuals+](#) | [Upload](#) | [Deep Search](#) | [Privacy Policy](#) | [@manuals.plus](#) | [YouTube](#)

This website is an independent publication and is neither affiliated with nor endorsed by any of the trademark owners. The "Bluetooth®" word mark and logos are registered trademarks owned by Bluetooth SIG, Inc. The "Wi-Fi®" word mark and logos are registered trademarks owned by the Wi-Fi Alliance. Any use of these marks on this website does not imply any affiliation with or endorsement.