



POSIFLEX PS-3515-G2 Fanless LCD Touch Terminal User Manual

[Home](#) » [POSIFLEX](#) » POSIFLEX PS-3515-G2 Fanless LCD Touch Terminal User Manual 

Contents

- [1 POSIFLEX PS-3515-G2 Fanless LCD Touch Terminal](#)
- [2 Product Information](#)
- [3 Product Usage Instructions](#)
- [4 FCC](#)
- [5 SAFETY INSTRUCTIONS](#)
- [6 Modes](#)
- [7 Overviews](#)
 - [7.1 View of I/O Interface](#)
 - [7.2 Bottom I/O Ports](#)
- [8 Installation](#)
- [9 Connection](#)
- [10 Power](#)
- [11 Operating System Recovery](#)
- [12 Specifications](#)
- [13 Documents / Resources](#)
 - [13.1 References](#)



POSIFLEX PS-3515-G2 Fanless LCD Touch Terminal



Product Information

The PS-3515-G2/3516-G2/3615-G2/3616-G2 Fanless LCD Touch Terminal is a touch screen terminal that is fanless and designed for commercial use. It comes with a power adaptor, power cord, usermanual, and recovery DVD (for pre-loaded OS model only). The appearance of the product may slightly differ from the actual product. The contents in the user manual are subject to updates without prior notice.

Product Usage Instructions

Safety Instructions:

- This equipment is not suitable for use in locations where children are likely to be present.

Battery Caution Notes:

- Dispose of used batteries according to the instructions.
- Do not replace a battery with an incorrect type that can defeat a safeguard.
- Do not dispose of a battery into fire or a hot oven, or mechanically crush or cut a battery.
- Avoid leaving a battery in an extremely high temperature surrounding environment.
- Avoid subjecting a battery to extremely low air pressure.

Terminal from Shipping Mode to Operation Mode:

1. Lift the terminal gently to unfold it.
2. Overturn the terminal in the indicated direction.
3. Place the terminal on a flat table.

4. Tilt the terminal to the indicated degree.
5. Remove the cable cover from the base.
6. Fix the base with two #/6/32 screws.
7. Push the cable cover back to the base.

Terminal from Operation Mode to Shipping Mode:

1. Remove the cable cover.
2. Follow the reverse steps of the "Terminal from Shipping Mode to Operation Mode" instructions.

SOME IMPORTANT NOTES

FCC

FCC NOTES

This equipment has been tested and found to comply with the limits for a Class A digital device, pursuant to part 15 of the FCC Rules. These limits are designed to provide reasonable protection against harmful interference when the equipment is operated in a commercial environment. This equipment generates, uses, and can radiate radio frequency energy and, if not installed and used in accordance with the instruction manual, may cause harmful interference to radio communications. Operation of this equipment in a residential area is likely to cause harmful interference in which case the user will be required to correct the interference at his own expense. This device complies with part 15 of the FCC Rules. Operation is subject to the following two conditions: (1) This device may not cause harmful interference, and (2) this device must accept any interference received, including interference that may cause undesired operation.

CE CLASS A WARNING

This equipment is compliant with Class A of CISPR 32. In a residential environment this equipment may cause radio interference.

WARRANTY LIMITS

Warranty will terminate automatically when the machine is opened by any person other than the authorized technicians. The user should consult his/her dealer for the problem happening. Warranty voids if the user does not follow the instructions in application of this merchandise. The manufacturer is by no means responsible for any damage or hazard caused by improper application.

SAFETY INSTRUCTIONS

This equipment is not suitable for use in locations where children are likely to be present.

BATTERY CAUTION NOTES

- Dispose of used batteries according to the instructions.
- Replacement of a battery with an incorrect type that can defeat a safeguard (for example, in the case of some lithium battery types)
- Disposal of a battery into fire or a hot oven, or mechanically crushing or cutting of a battery that can result in an explosion.
- Leaving a battery in an extremely high temperature surrounding environment that can result in an explosion or the leakage of flammable liquid or gas.
- A battery subjected to extremely low air pressure that may result in an explosion or the leakage of flammable

liquid or gas.

Modes

Terminal from shipping mode to operation mode

In consideration of proper packaging, before shipping, the terminal is folded, staying in shipping mode. Thus, when receiving the product, you will find that the terminal is well folded, as shown below.



Before operating this terminal, unfold it and make this terminal rise in operation mode by referring to the following steps. Here, an equivalent model with GEN 7 base is taken below for example.

1. Firstly, lift this terminal gently to make it to be unfolded.



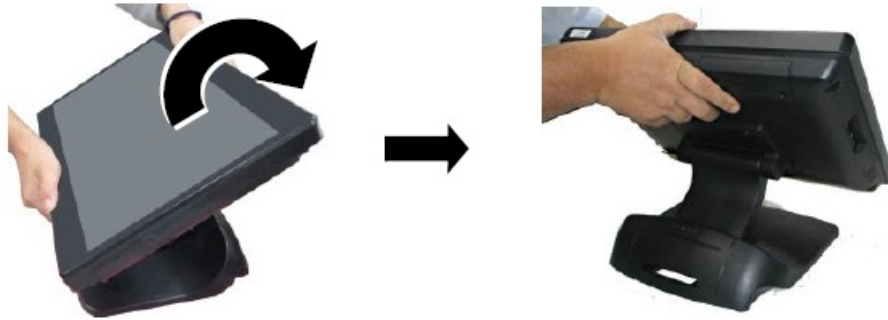
2. Overturn this terminal in the direction as indicated by the arrow in the right figure.



3. Place this terminal on a flat table.



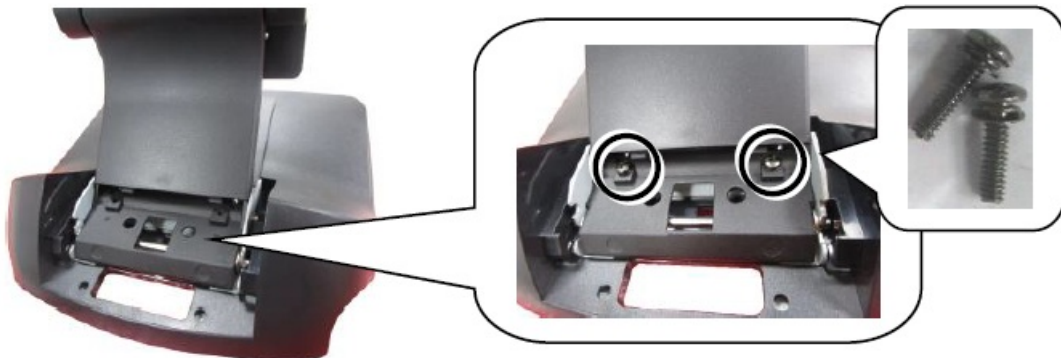
4. Tilt this terminal to a degree in the direction as indicated by the arrow below.



5. Remove the cable cover from the base.



6. Fix the base with two #/6/32 screws.



7. Push the cable cover back to the base.



Terminal from operation mode to shipping mode

To fold this terminal, refer to the following steps. Here, an equivalent model with GEN 7 base is taken below for example.

1. Remove the cable cover.



2. Carefully hold the lower rim of the display.



3. Push the base-folding lever in the direction as indicated by the arrow below (1). Then, the display will be loosen and go down (2).



4. When the display goes down to a degree, loose the base-folding lever, as shown in the direction as indicated by the arrow below.



5. Then, gently tilt the display in the direction as indicated by the arrow below until the display is well folded.



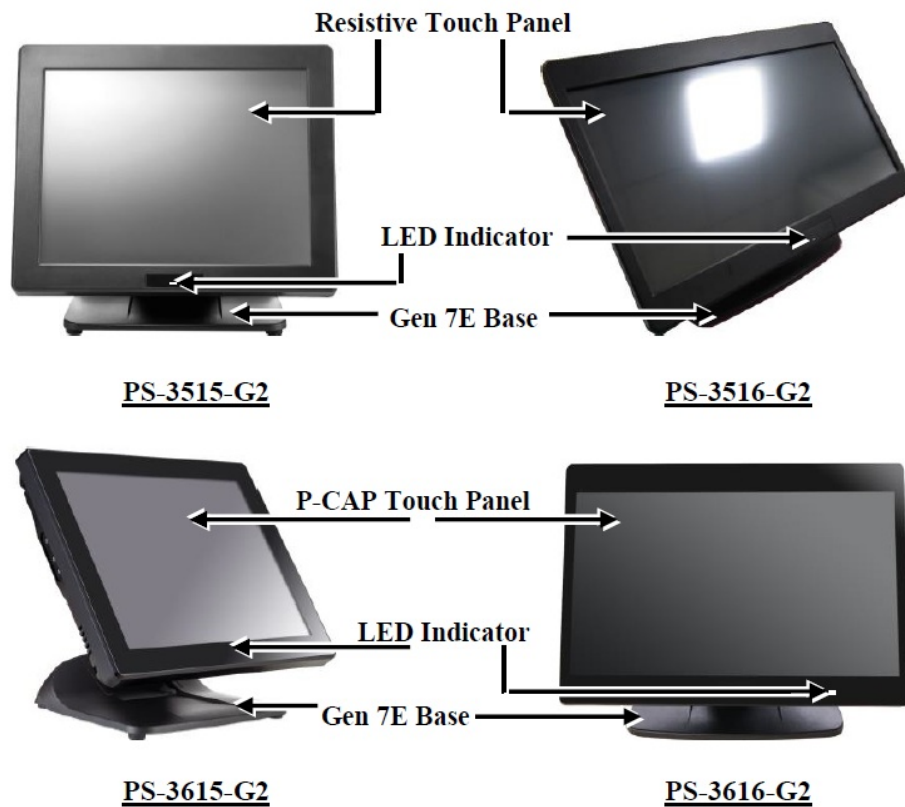
6. Put back the cable cover.



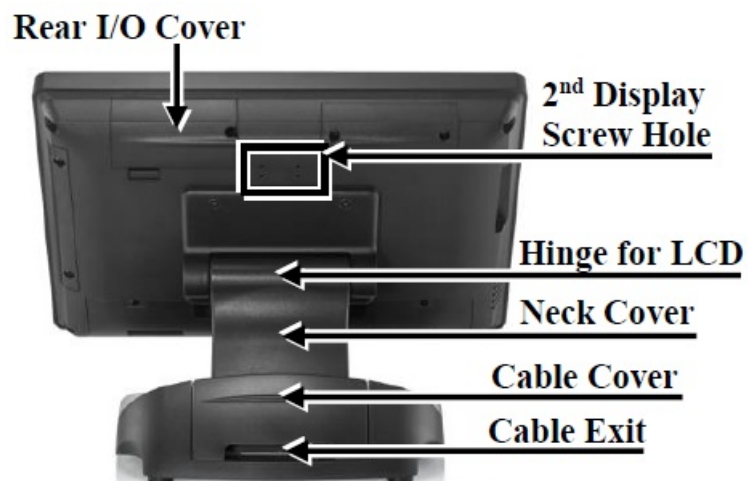
Overviews

Overviews of the PS-3515-G2/3516-G2/3615-G2/3616-G2

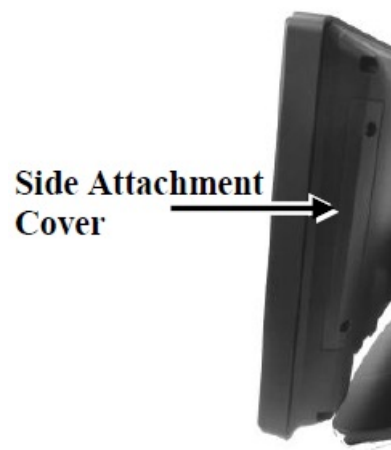
Front View



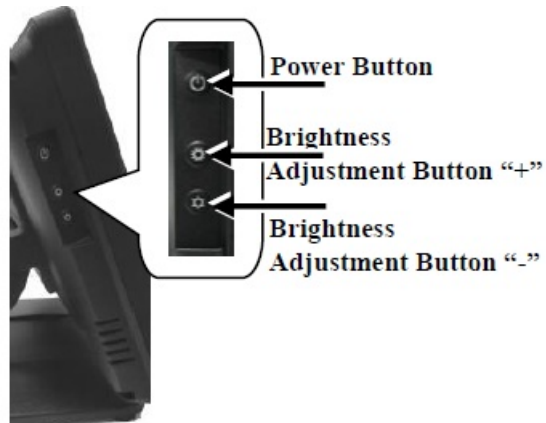
Rear View



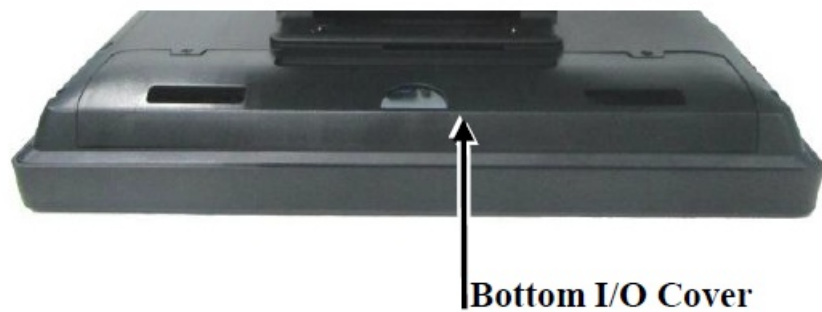
Left Side View



Right Side View

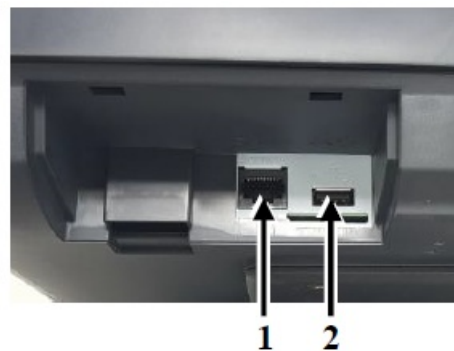


Bottom View



View of I/O Interface

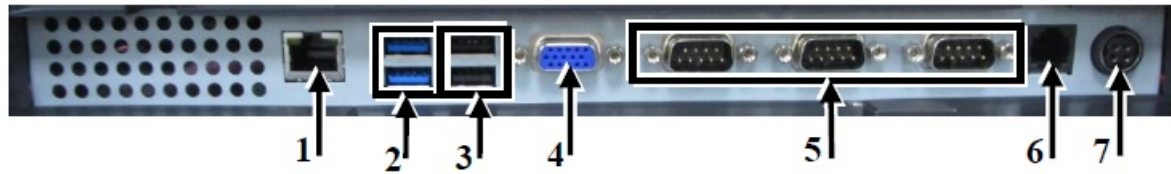
Top I/O Ports



1. COM4 Port
2. USB 2.0 Port

The top I/O ports are provided for COM-based and USB-based peripheral devices, for example, customer display.

Bottom I/O Ports



1. RJ45 LAN Port
2. USB 3.0 Ports
3. USB 2.0 Ports
4. VGA Port
5. COM Port (COM1/COM2/COM3)
6. RJ11 Cash Drawer Port
7. 12VDC-IN Power Jack

Installation

Installing Optional Upgrade Kits and Peripherals

PS-3515-G2/3516-G2/3615-G2/3616-G2 can work with multiple optional upgrade kits and peripheral devices, such as magnetic stripe reader (MSR), LCD monitor, cash drawer and the like.

Before installing an optional upgrade kit and/or peripheral device, make sure that the system is powered off and the external power source is removed from the POS box to prevent electric hazard! Failure to follow the warning description will void the product warranty!

For the detailed instruction, refer to each of the user manuals of the optional upgrade kits and peripheral devices.

Connection

Connecting Power Adapter and I/O Cables

Before connecting power adapter and I/O cables to the I/O ports of PS series terminal, please route and arrange the cables. Refer to the following step-by-step instruction of cable routing and arrangement for the details. Here, an equivalent model with GEN 7 base is taken below for example.

1. Press the circled section of the cable cover with your thumb.



2. Pull out the cable cover.



3. Push and tilt the terminal to the end in the direction as shown by the arrow. Then determine that the terminal is tilted to the end, as shown in the right figure.



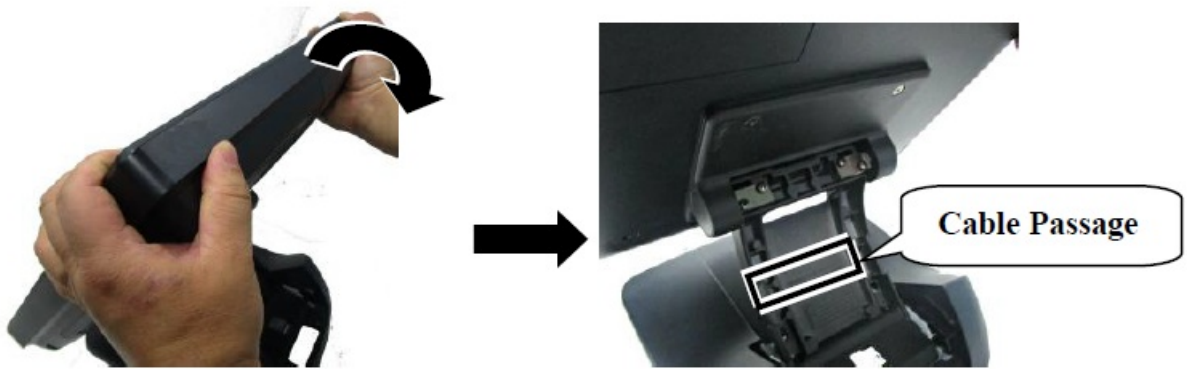
4. Press the circled section with two thumbs and pull by force the two sides of the locking hook with two forefingers as indicated by the arrow.



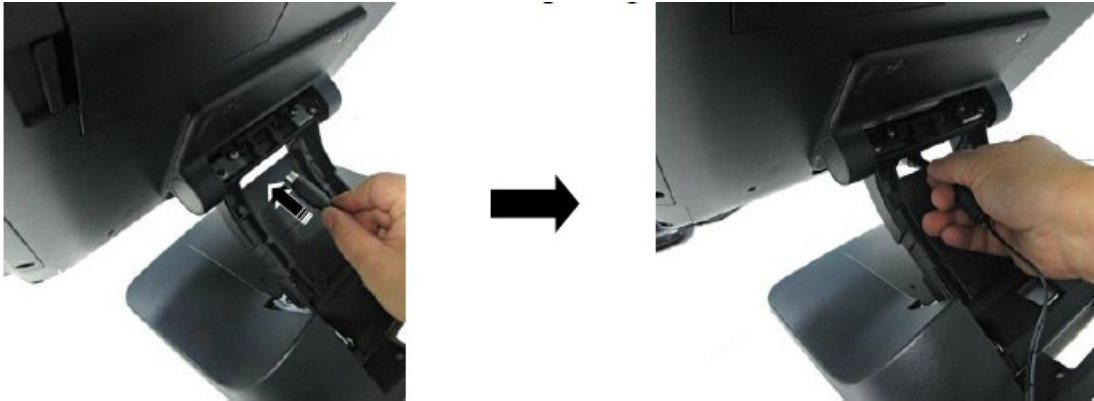
5. Remove the neck cover from the base stand.



6. Tilt the terminal slightly at a little angle in the direction as shown by the arrow, making cables easily pass through the cable passage.



7. Make the connector, which will be connected to the I/O port of the terminal, pass through the cable passage of base stand.



8. Push and tilt the terminal to the end in the direction as shown by the arrow.



9. Remove the bottom I/O cover with your forefinger inserting the middle hole of the cover.



10. Connect the connector of the power adapter to the 12VDC-IN power jack.



11. Cover the bottom I/O interface and gather the I/O cables to the circled cable arrangement area, as shown below



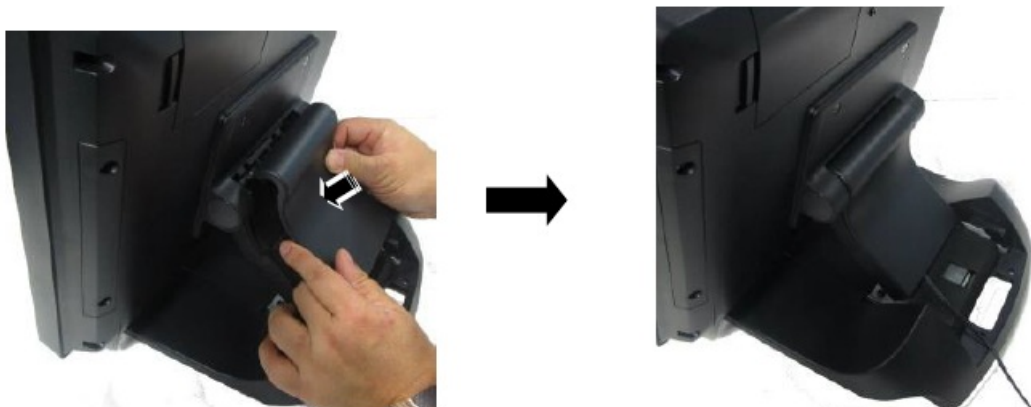
12. Push and tilt the terminal to the end in the direction as shown by the arrow.



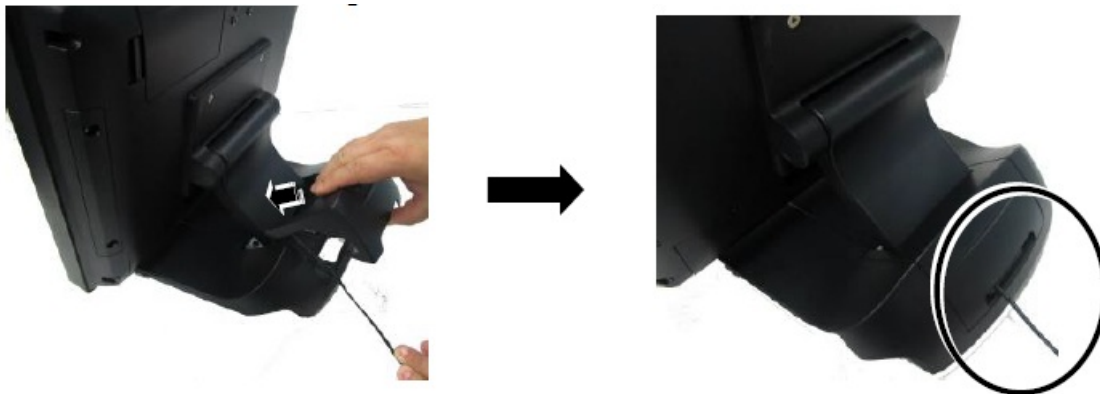
13. Arrange well the I/O cable located at the area of neck cover.



14. Shield the I/O cable arrangement area on the neck of the base stand with the neck cover.



15. Shield the I/O cable exposure area with the cable cover.



CAUTION: On doing insertion or extraction of a cable connector, please always hold the connector head itself instead of pulling the cable wire. Doing this could damage the cables and ports, which is considered as an artificial damage and is not covered by the warranty. The means of power cord should be connected to a socket-outlet with earthing connection.

Power

Powering ON the PS-3515-G2/3516-G2/3615- G2/3616-G2

After connecting the power cable to the power jack of the terminal, press the power button to power on the terminal. To power it off, press the power button again.

Once powering off the system, if you want to power it on again, please wait at least 3 seconds.



If the system hangs due to a reason, such as software resource conflict, please press and hold the power button for over 10 seconds to forcibly shut down the system.

Power LED Indicator

LED status indicator is mainly responsible for notifying users of the current system status by emitting various LED signals. The table provided below shows all the possible LED status as a quick reference.

LED	Status	Description
POWER	Solid blue	System power ON
	Solid orange	System standby

Installing an Operating System

This product is highly professional equipment. Therefore, we do NOT encourage you to install any operating system into this machine without professional assistance. We shall not be responsible for any technical support to

questions on this aspect. We suggest that you contact your dealer for OS installation.

Operating System Recovery

For the PS-3515-G2/3516-G2/3615-G2/3616-G2 main system preloaded with an operating system on HDD or SSD, We provide a recovery DVD shipped with the main system for the preloaded operating system. The system integrator shall take care of software restoration after the OS is recovered.

If you plan to recover your operating system, we do NOT encourage you to recover any operating system. Please contact your service center for operating system recovery.

Driver Download

If your POS terminal is shipped without OS pre-installed, please download the relevant driver that you need from the Posiflex website

(<http://www.posiflex.com/en-global/Download/download>).

Operation Environment


This terminal must NOT be operated in an environment with restricted ventilation. There must be at least 25 mm air clearance around any top or side ventilation holes with free flow of air around the unit at all times for system operation.

Specifications

Model		PS-3515-G2/3516-G2/3615-G2/3616-G2
System Configuration	Processor	Intel Elkhart Lake Celeron J6412 (default) Intel Elkhart Lake Celeron N6210
	System Memory	SO-DIMM x 1, DDR4
	Storage Device	1 x M.2 port (M.2 2280 / B+M key) (M.2 support SATA interface signal only)
	Power Supply	12V/60W
	OS support	Windows 10 IoT
Display & Touch	LCD	PS-3515-G2/3615-G2: 15" (1024×768) with LED backlight PS-3516-G2/3616-G2: 15.6" (1366×768) with LED backlight
	Touch	PS-3515-G2/3516-G2: Resistive Touch PS-3615-G2/3616-G2: P-CAP Touch
I/O & Expansion	Serial Port	4, 3 x DB9 on bottom I/O plate + 1 x RJ50 on top I/O plate, 5V/12V support on all COM ports
	Standard USB Port	5, 2 x USB3.0 + 2 x USB2.0 on bottom I/O plate + 1 x USB2.0 on top I/O plate
	Powered USB Port	Via PU490 in GEN8 base

	PS/2 Port	Pin header inside service window
	LAN Port	10 / 100 / 1000 Mb x 1
	Display Port	VGA x 1, 12V support for Posiflex monitors
	CR Port	1, control 2 CR
	Audio	Buzzer + 1 x internal 2W speaker (optional)
	Base Stand	7th generation foldable base stand
	Expansion Slot	1 x M.2 (M.2 2230 / E Key)
Environmental	Operating Condition	0°C – 40°C, 20%RH – 90%RH
	Storage Condition	-20°C – 60°C, 10%RH – 90%RH

The product information and specifications are subject to change without prior notice. To get the detailed information on the PS-3515-G2/3516-G2/3615-G2/3616-G2, please check this model from Posiflex Global Website.

	<p>POSIFLEX PS-3515-G2 Fanless LCD Touch Terminal [pdf] User Manual</p> <p>PS-3515-G2, PS-3516-G2, PS-3615-G2, PS-3616-G2, PS-3515-G2 Fanless LCD Touch Terminal, Fanless LCD Touch Terminal, LCD Touch Terminal, Touch Terminal, Terminal</p>
---	---

References

- [Posiflex homepage](#) | [Posiflex](#)
- [Posiflex homepage](#) | [Posiflex](#)
- [Posiflex](#)