



PORTOS DC15 Drive Controlling System User Manual

[Home](#) » [PORTOS](#) » PORTOS DC15 Drive Controlling System User Manual 



**PORTOS drive controlling system
USER MANUAL
DC1, DC15**



The remotes operate at 433 MHz frequency

Contents

- [1 Technical data :](#)
- [2 NOTES](#)
- [3 Documents / Resources](#)
- [4 Related Posts](#)

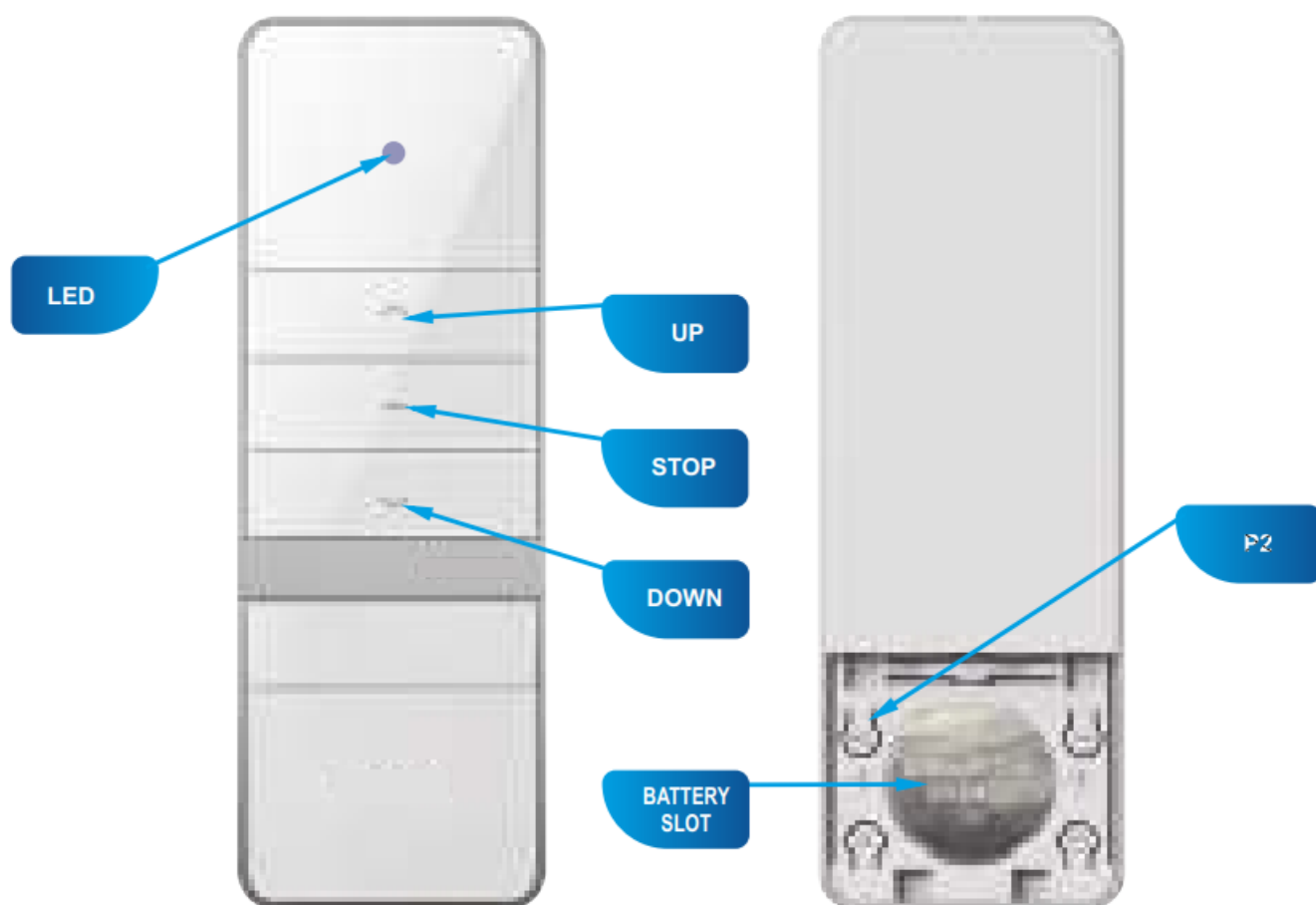
Technical data :

Power:
Operating frequency:
Transmission power:
Operating temperature:
Operating range:

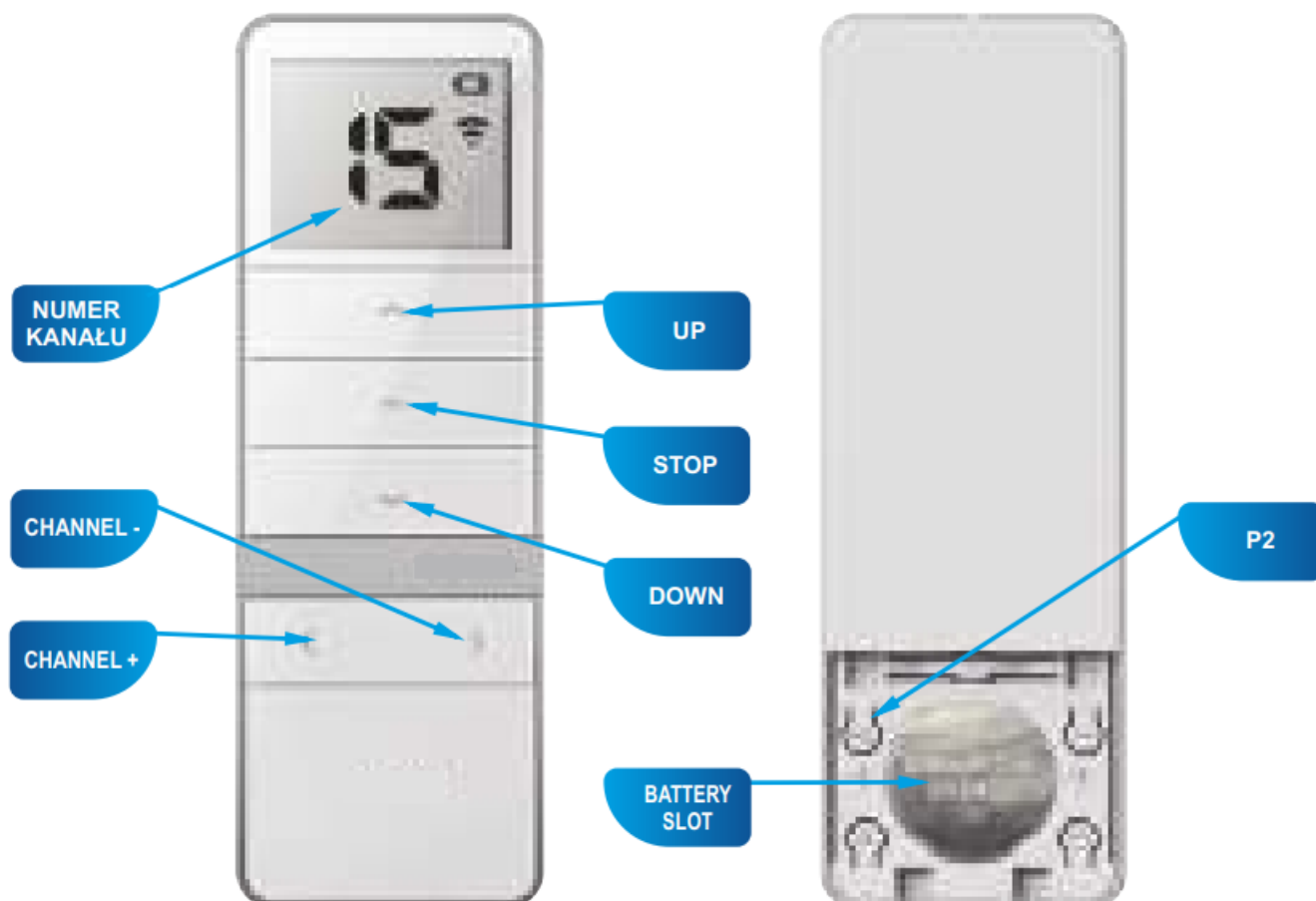
3V battery (CR 2430)
433 MHz
10 mW
from -10 °C to +50 °C
Determined by architectural
and regulatory factors



Device characteristics:



DC1 (1 channel)



DC15 (15 channels)

1. Programming the radio drive on a specific channel of any transmitter.

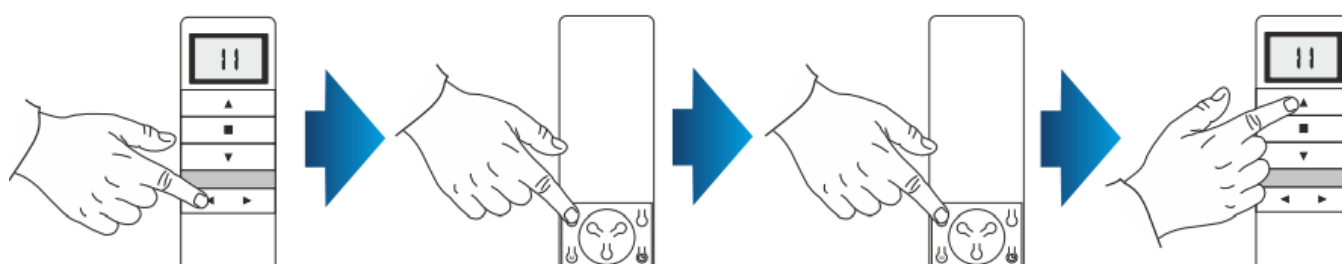
A. Method one



IMPORTANT!!!

While programming, only the drive being programmed should be connected to a power supply. After connecting the motor to a power supply, you will hear a long single beep sound and the motor will move briefly up and down (if you do not press any button within 12 seconds, the motor will quit the programming mode).

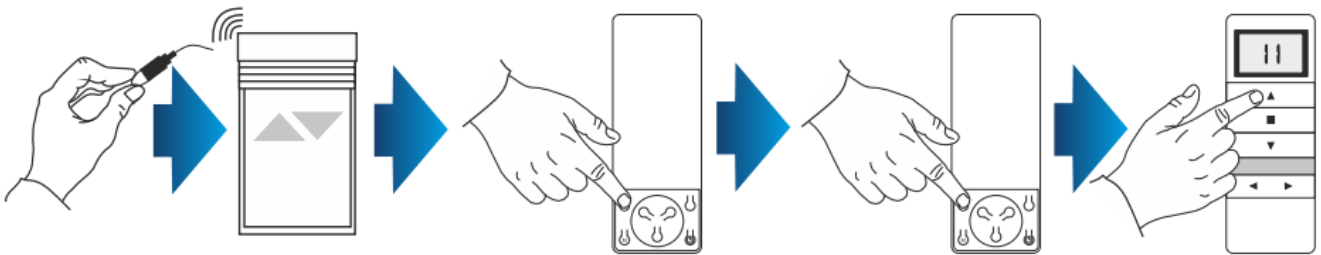
1. Using the CHANNEL + / – buttons, select the channel you wish to program:
2. Press the P2 button, the motor will make a single beep sound.
3. Press P2 again, and the motor will make a single beep sound again.
4. Press the UP button, the motor will make 6 beeps and move briefly up and down, which means that the channel has been programmed.



B. Method two

In order to program the drive, open the inspection hatch of the roller shutter and:

1. Press the microswitch located on the lead emerging from the head of the drive for 1 second – the motor will confirm with a single beep sound and the shutter will move briefly UP and DOWN.
2. Using the CHANNEL + / – buttons, select the channel you want to program and press P2 – the motor will make a single beep sound.
3. Press P2 again, the motor will make a single beep sound again.
4. To finish the programming process, press UP. You will hear 6 beeps and the roller shutter will move briefly up and down.



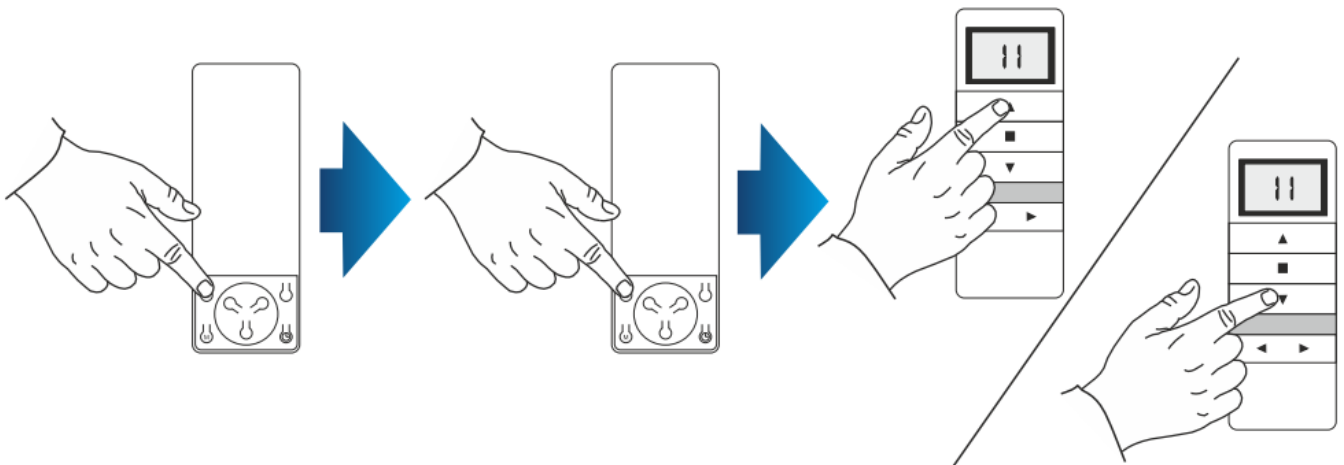
IMPORTANT!!!

If you have an external radio receiver, follow the user manual for the device (i.e. XT-R, PPKR-313, or PPKR-400).

3. Changing the direction of rotation of the drive.

METHOD 1:

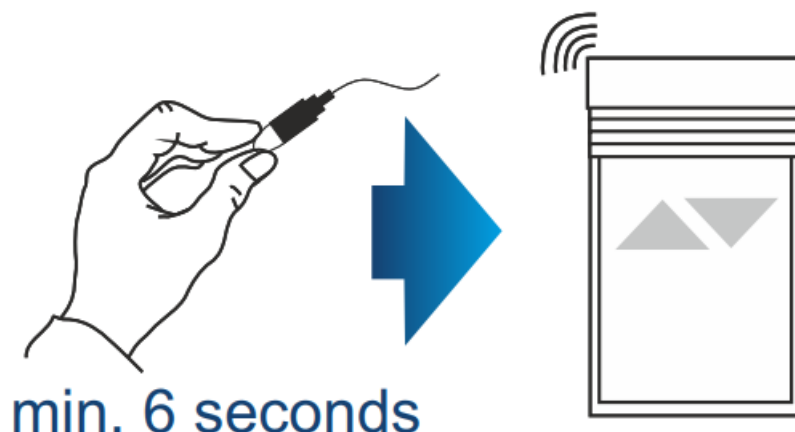
After assigning the device to a motor, check if the running direction is correct by switching the motor on with the device. To change the running direction of the motor, you need to reprogram the channel (point 1 of this manual) by changing the programming method – if the motor was programmed following the P2 + P2 + UP method and the direction of rotation needs reversing, reprogram the motor by finishing the programming process with direction reversal, i.e. P2 + P2 + DOWN. The drive will register the direction change.



METHOD 2:

Using the microswitch located on the lead emerging from the head of the drive, you can change the drive's running direction. To do so, you should:

1. Press the microswitch down for 6 seconds.
2. After 1 second, the motor will confirm with a short beep sound and move up and down, whereas after the next 5 seconds the motor will confirm the direction change with 3 beeps and the roller shutter will move UP and DOWN twice.



4. Channel deletion (deleting all channel settings).

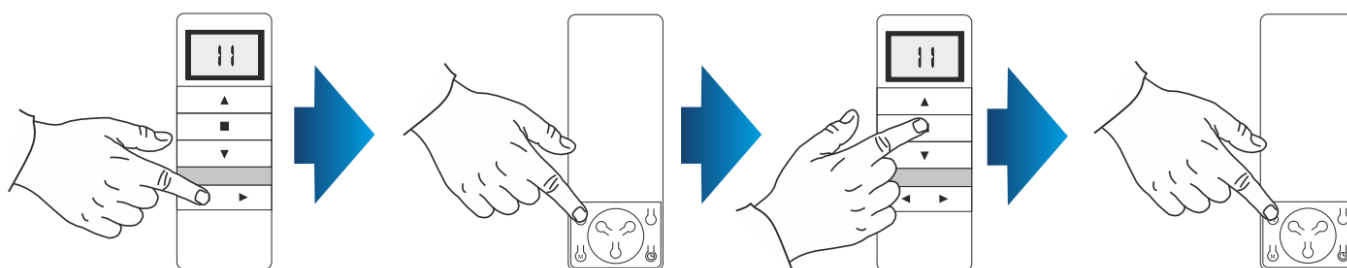


IMPORTANT!!!

If you delete the settings of a particular channel, drives assigned to that channel will be completely deleted from other channels as well.

METHOD 1:

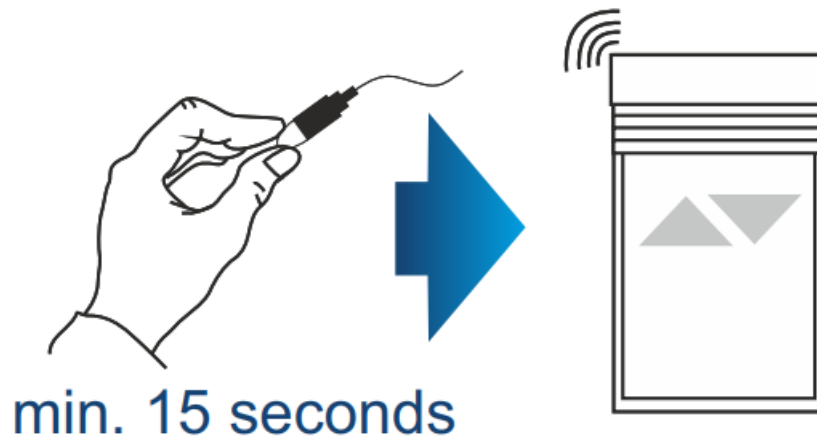
1. Select a previously programmed channel on the display:
2. Press P2, the motor will make a single beep sound and move briefly up and down.
3. Press STOP, the motor will make a single beep sound.
4. Press P2 again, you will hear 4 beeps and the roller shutter will move briefly up and down.



METHOD 2:

Using the microswitch located on the lead emerging from the head of the drive, you can delete a previously programmed transmitter channel. To do so, you should:

1. Press the microswitch down for at least 15 seconds.
2. After 1 second, the motor will make a short beep sound and move up and down, whereas after the next 5 seconds, the motor will confirm with 3 beeps and the roller shutter will move UP and DOWN twice, and finally after 15 seconds the motor will make 3 beeps and the roller shutter will move UP and DOWN once.



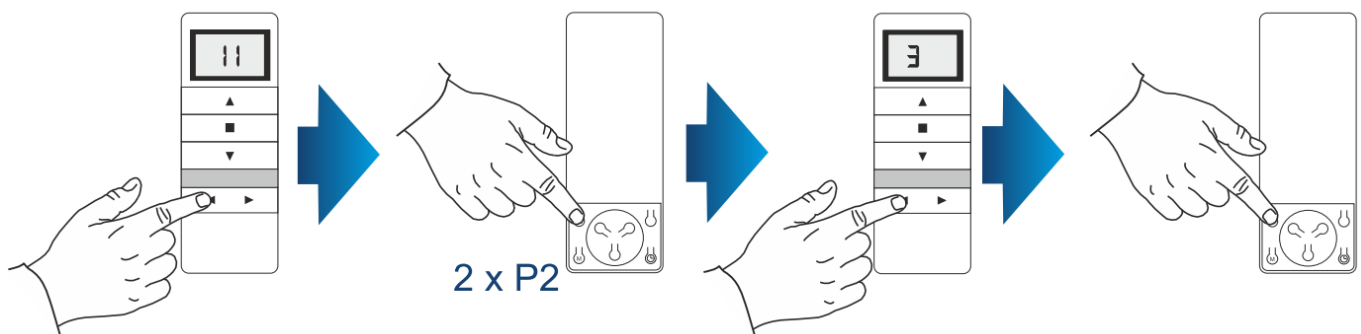
METHOD 3:

Reprogramming the radio drive on a given channel (point 1 of this manual) automatically deletes previous settings.

5. Adding another channel (transmitter) to the motor.

To add another channel or another device, start with the transmitter which was programmed first. While adding an additional transmitter (channel), do not disconnect the motor from power supply! Transmitters must be located within the receivers' range.

1. Select a previously programmed channel on the display of the active transmitter.
2. Press P2, the motor will make a single beep sound and move briefly up and down.
3. Press P2 again, the motor will make a single beep sound again.
4. Press P2 on the device you wish to program. You will hear 5 beeps and the motor will move briefly UP and DOWN.



6. Device operating mode.

The PORTOS-RM radio drive can operate in two modes: Support mode

Pressing and releasing the UP or DOWN button activates a programmed motor function (opening or closing the roller shutter). The motor will operate until the roller shutter is fully opened or closed.

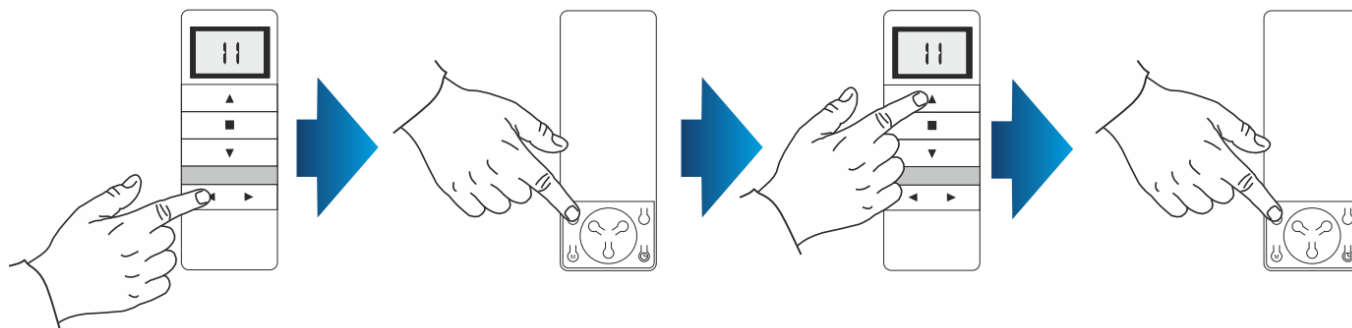
Non-support mode

The motor will only operate when the button is pressed down. Releasing the button stops the motor. If the button is pressed down for more than 2 seconds, the motor will start operating in the support mode, i.e. until the roller shutter is fully opened or closed.

7. Changing the operating mode.

You can switch between the operating modes by following the instructions below:

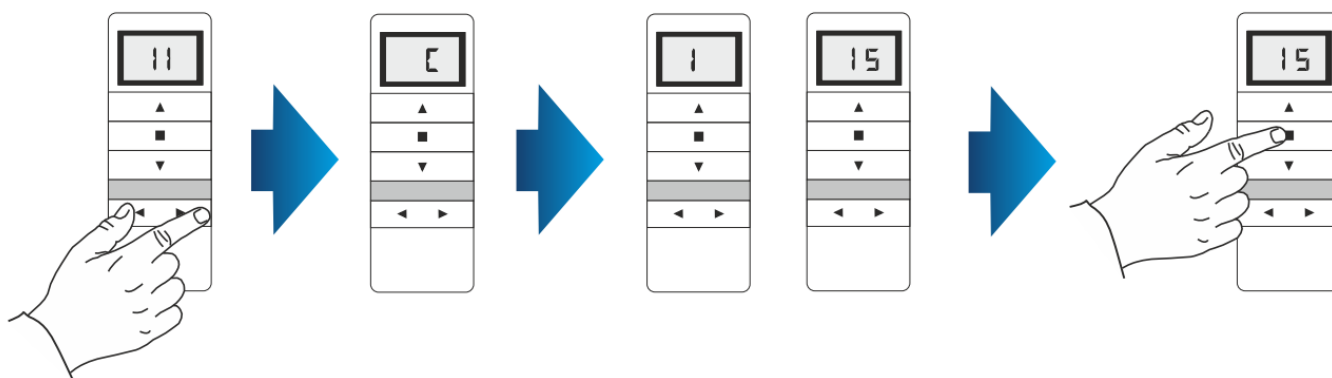
1. Select a previously programmed channel.
2. Press P2, the motor will make a single beep sound and move briefly UP and DOWN.
3. Press UP, the motor will make a single beep sound.
4. Press P2, you will hear 3 beeps and the motor will move briefly UP and DOWN.



The remote operating mode change is complete. It affects all channels and remotes assigned later.

To deactivate unused channels we do as follows:

1. Press CHANNEL – and CHANNEL + buttons simultaneously.
2. The C will appear on the display.
3. Press and hold the CHANNEL – and CHANNEL + buttons again.
4. The number of currently activated channels will appear on the display.
5. Use CHANNEL – and CHANNEL + buttons to select the number of channels to be used.
6. Press the STOP button to confirm.




NOTES

PORTOS TR7

spotka z ograniczoną odpowiedzialnością spółka komandytowa
ul. Ziota 71
62 – 800 Kalisz
tel. 62 / 768 40 00

Documents / Resources

	<p>PORTOS DC15 Drive Controlling System [pdf] User Manual DC15, Drive Controlling System, DC15 Drive Controlling System</p>
---	---