

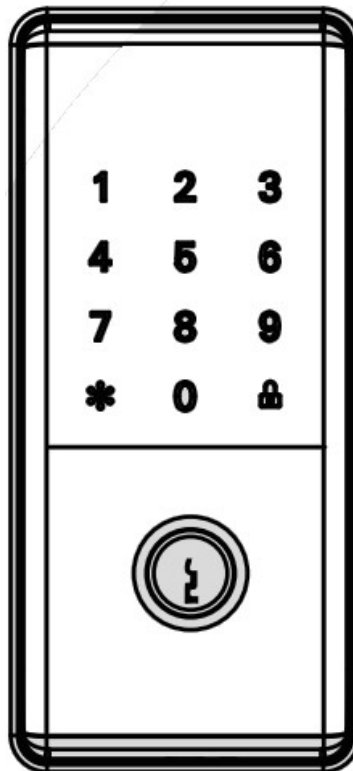


PORT GUARD Deadbolt Lock Installation Guide

[Home](#) » [PORT](#) » PORT GUARD Deadbolt Lock Installation Guide 

PORT

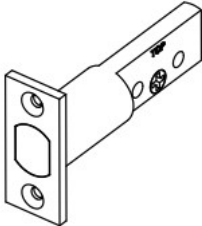

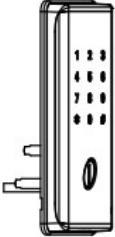
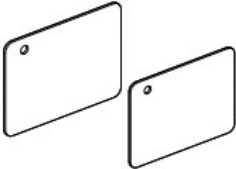
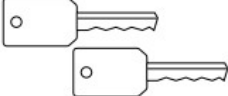

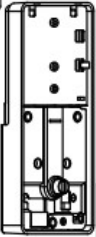

GUARD Deadbolt Lock
Installation Guide



Contents

- 1 WHAT'S INCLUDED
- 2 PRODUCT OVERVIEW
- 3 Documents / Resources
 - 3.1 References

WHAT'S INCLUDED

Bolt and strike	Exterior Assembly	Interior Assembly	Screws
 	  	  	



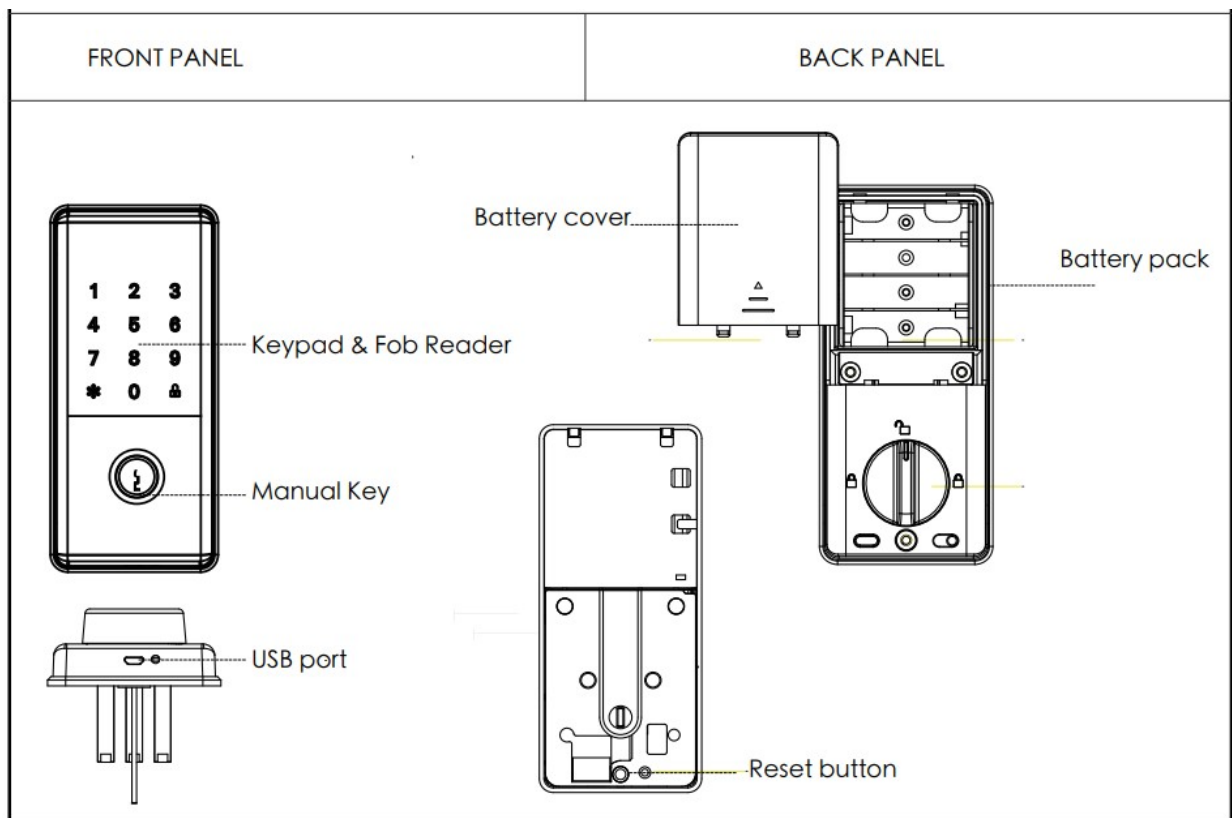
What you'll need



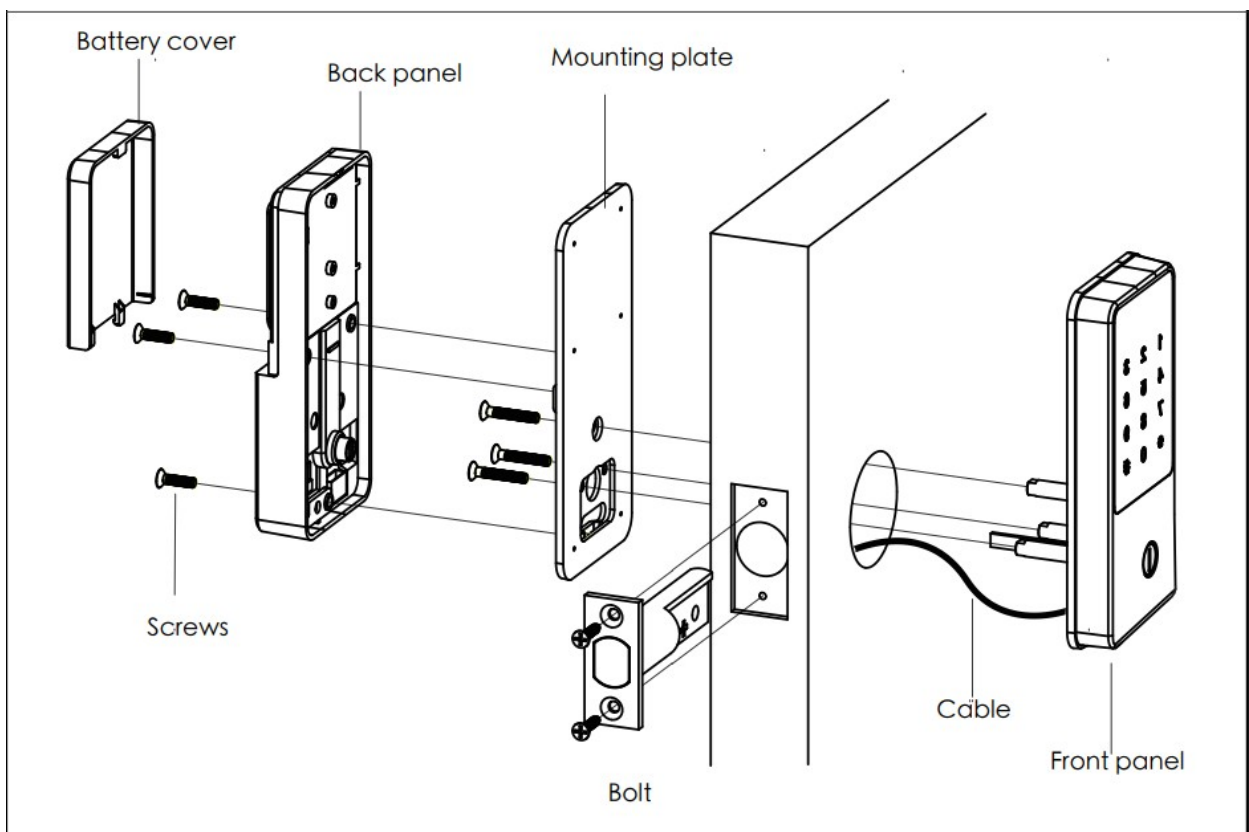
Phillips head Screwdriver

Note: No drill needed

PRODUCT OVERVIEW

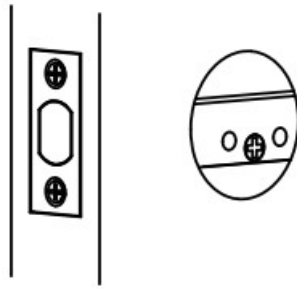


EXPLOSIVE VIEW

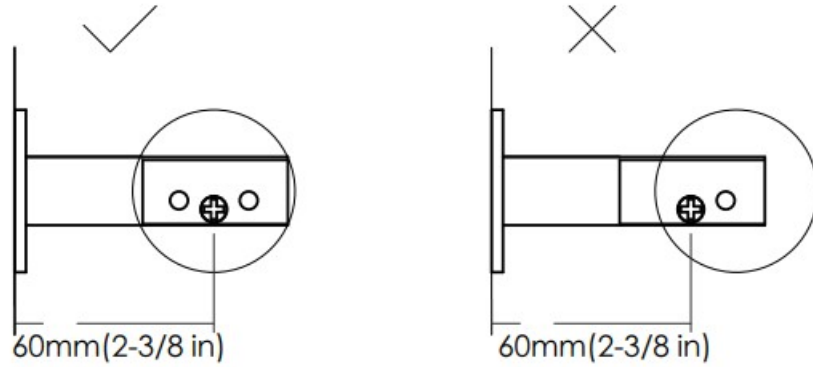


Adjust the backset of latch (if needed)

A Hold the bolt in front of the door hole, with the latch face flush against door edge.



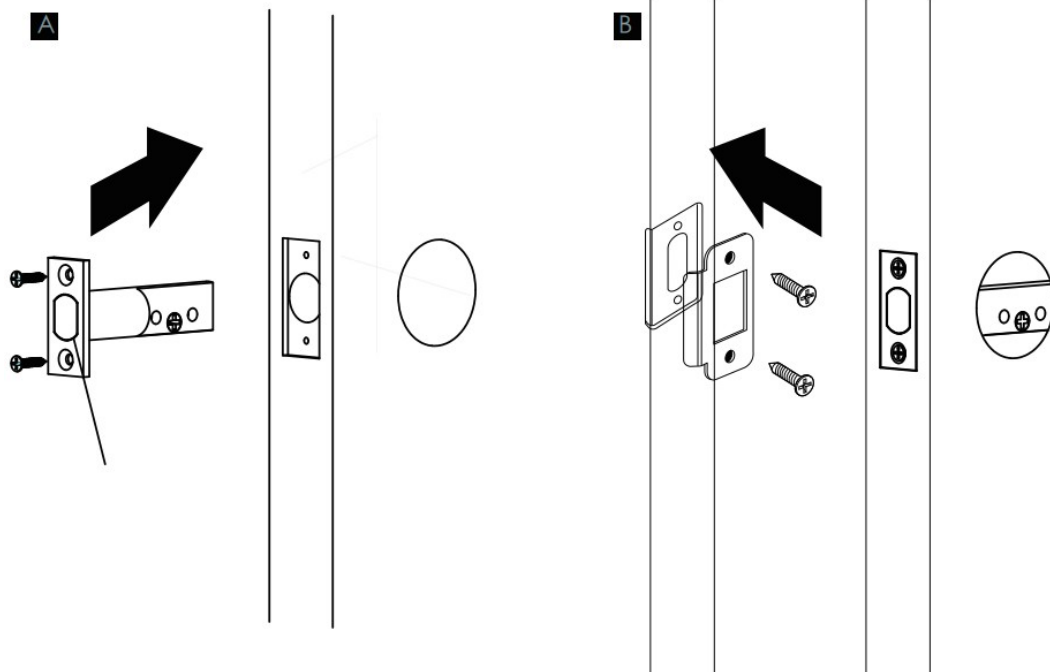
B If the bolt holes are centered in the door hole, no adjustment is required. Proceed to step 2. If the bolt holes are NOT centered, adjust latch. See "bolt Adjustment."



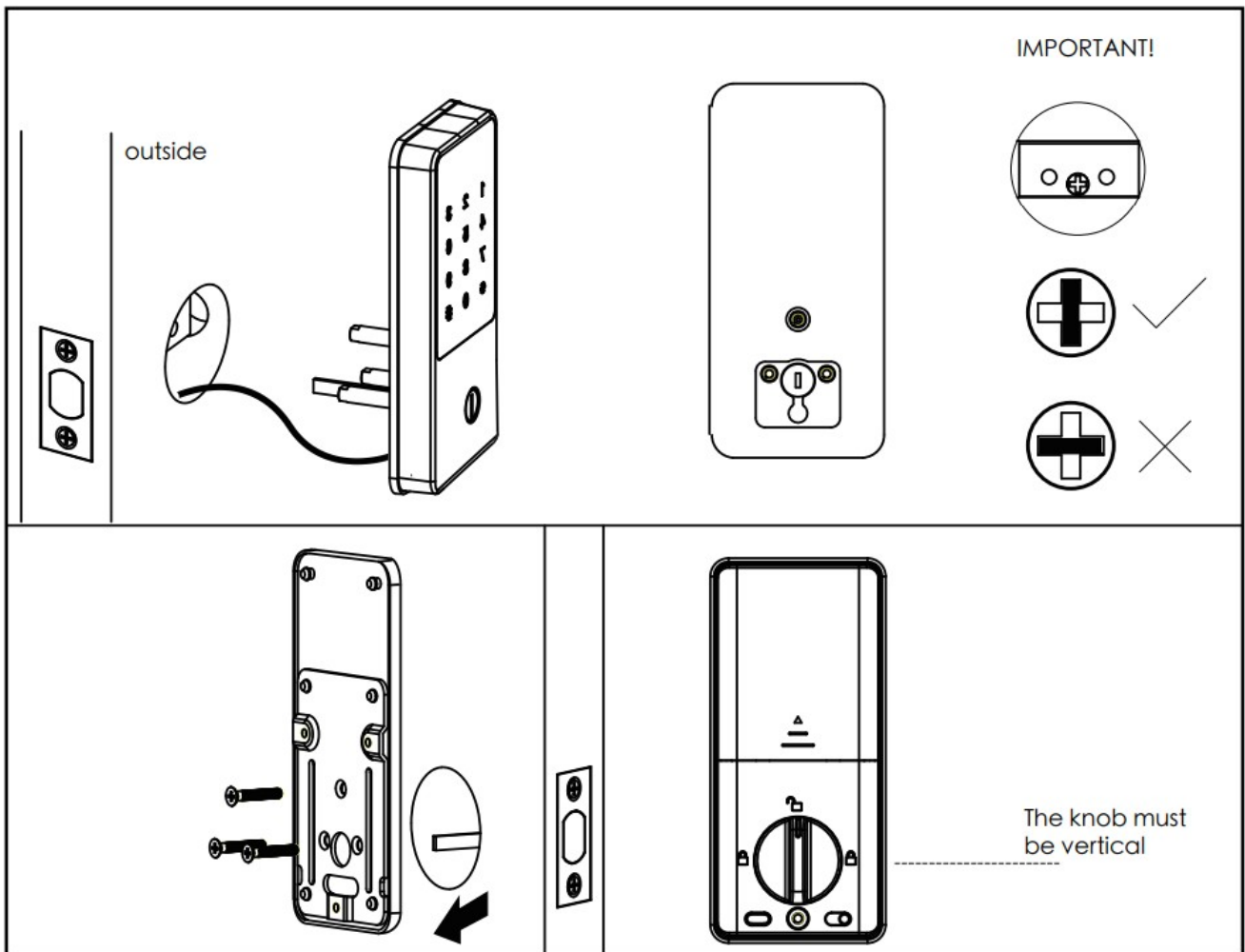
C Latch adjustment t (only if needed)



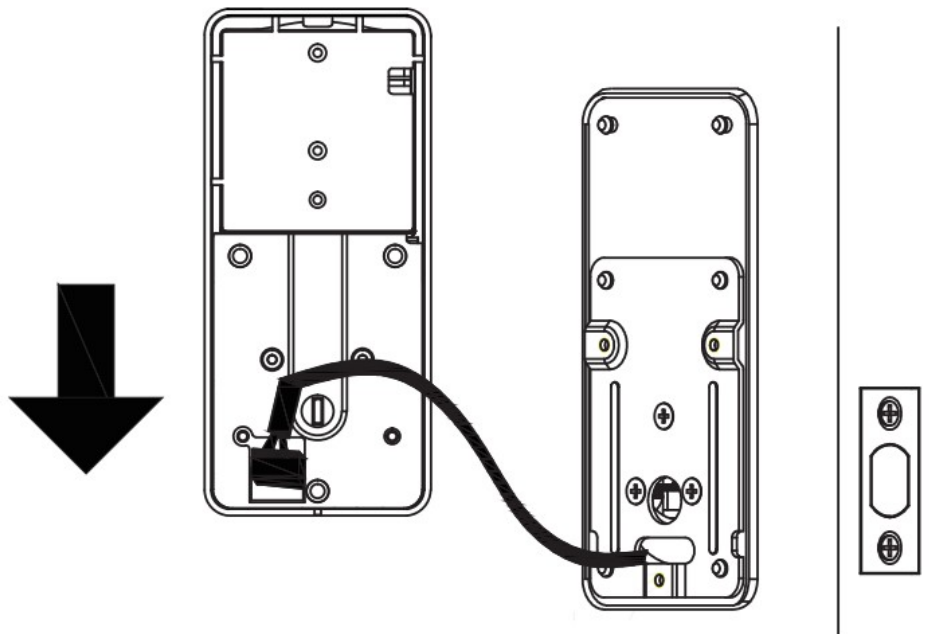
Install Bolt



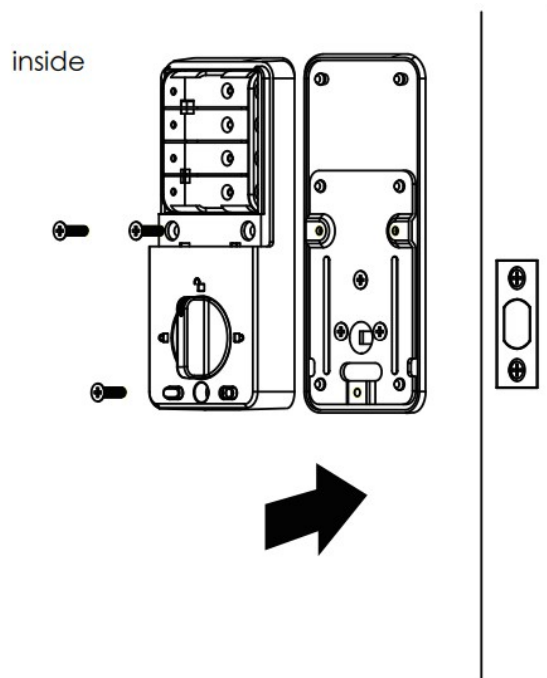
Install front panel



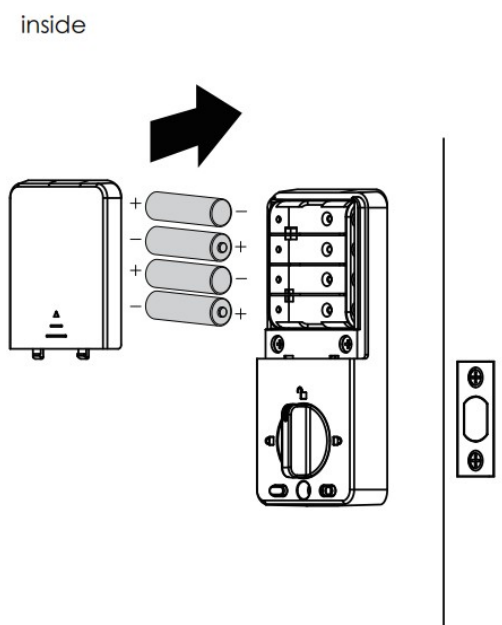
Connect wire connector



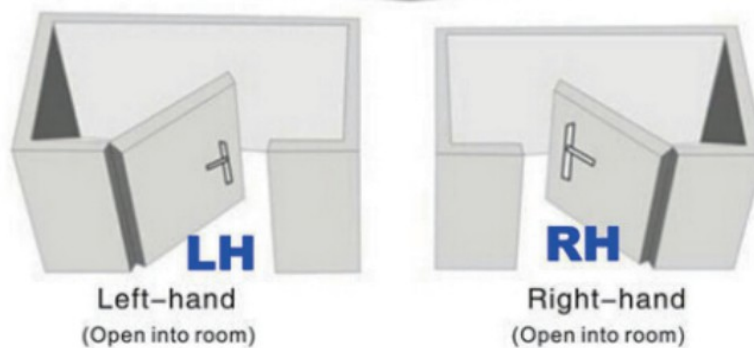
Note: Cable goes below deadbolt, The wire connectors can only be connected in one way.
Install back panel



Install batteries and battery cover



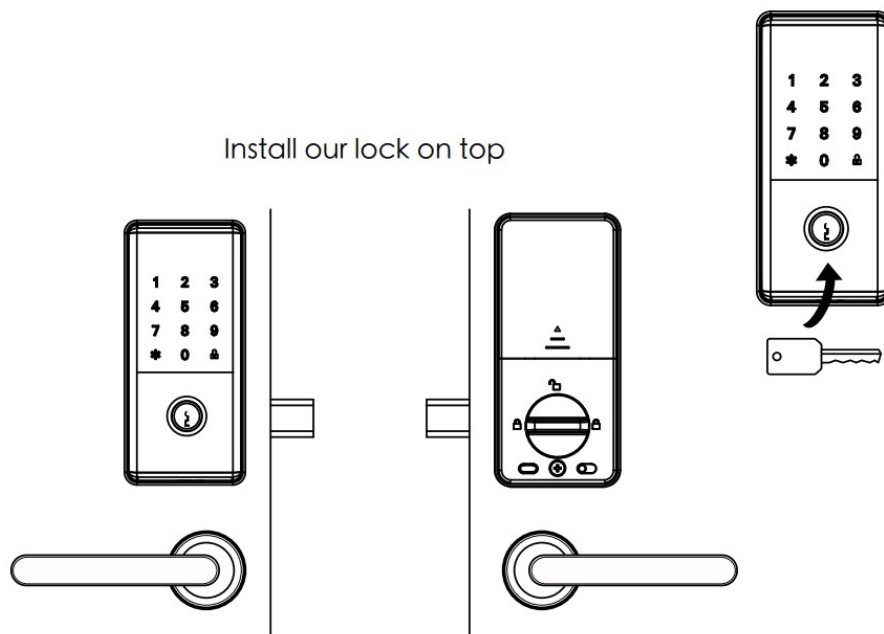
Adjust lock direction



Note : If Left handle open door : Choose *46# 123456# 1

If right handle open door: Choose : *46#123456#2 After choose ,input 123456# to check if lock unlock properly.

Insert the key and test the installation



Port Security System LLC

For any technical questions or support call us on: 800 – 219 – 2366

or email us on Authority@portsmartlock.com

Visit us at: www.portsmartlock.com

Documents / Resources



[PORT GUARD Deadbolt Lock](#) [pdf] Installation Guide
GUARD Deadbolt Lock, GUARD, Deadbolt Lock, Lock

References

- [0 Home — Port Smart Locks](#)