

# Pontec 20000 Multi Clear Flow Through Filter Instruction Manual

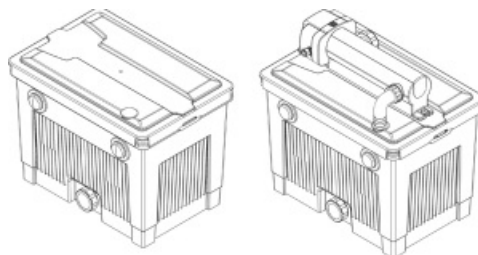
## Contents

- 1 20000 Multi Clear Flow Through Filter
  - 1.1 Operating instructions
  - 1.2 MultiClear 20000/Set 20000/Set 25000
  - 1.3 MultiClear 20000/Set 20000/Set 25000
  - 1.4 WARNING
  - 1.5 Safety information
  - 1.6 The following restrictions apply to the unit:
  - 1.7 Product Description
  - 1.8 Overview
  - 1.9 Installation and connection
  - 1.10 Installing the device
  - 1.11 Installing the unit
  - 1.12 Connect the unit
  - 1.13 Commissioning/start-up
  - 1.14 Maintenance and cleaning
  - 1.15 Cleaning the foam filter
  - 1.16 Storage/winter protection
  - 1.17 Malfunction remedy
  - 1.18 Technical data
  - 1.19 Wear parts
  - 1.20 Disposal
- 2 Documents / Resources
  - 2.1 References
- 3 Related Posts

## 20000 Multi Clear Flow Through Filter

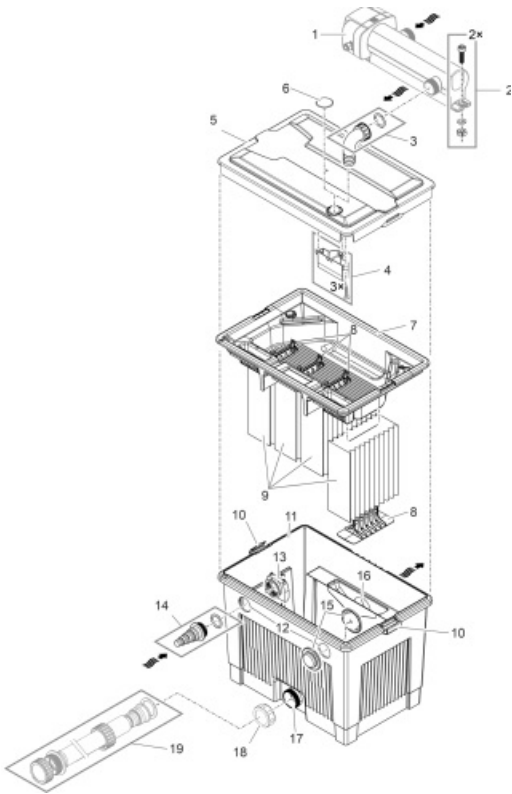
### Operating instructions

#### MultiClear 20000/Set 20000/Set 25000



MultiClear 20000/Set 20000/Set 25000

A



MCR0024

– ? –

MultiClear 20000

B  
MCR0029

C  
MCR0031

– ? –

MultiClear Set 20000/Set 25000

D

MCR0030

E

MCR0028

– ? –

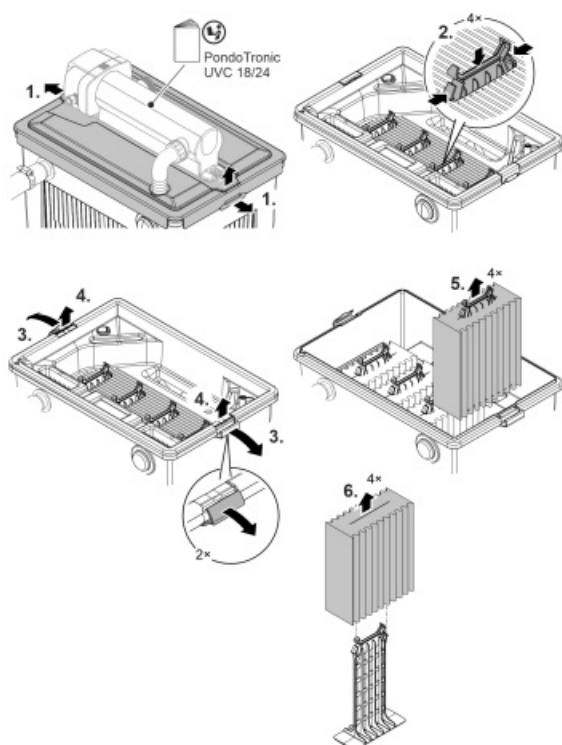
MultiClear Set 20000/Set 25000

F

MCR0036

– ? –

MultiClear 20000/Set 20000/Set 25000

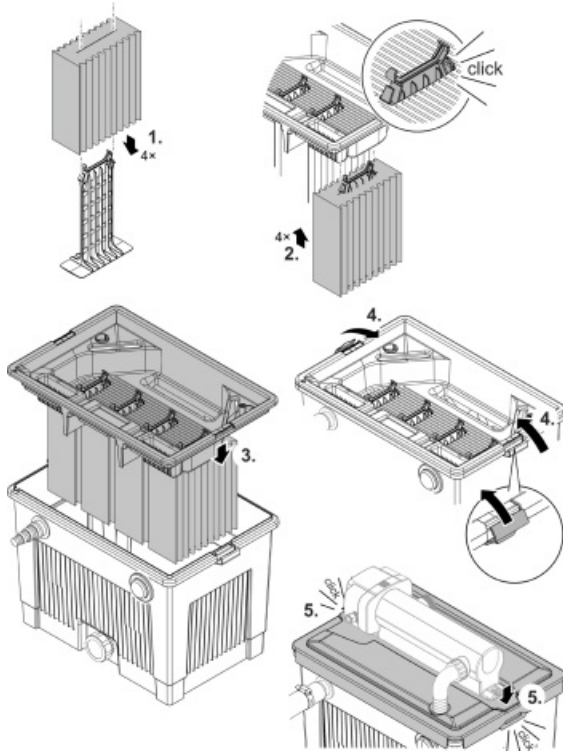


G

MCR0032

– ? –

MultiClear 20000/Set 20000/Set 25000



H

MCR00

Original manual. This manual belongs with the unit and must always be passed on together with the unit.

## WARNING

- Disconnect all electrical devices in the water from the power supply before reaching into the water. Otherwise there is a risk of severe injuries or death by electrocution.
- This unit can be used by children aged 8 and above and by persons with reduced physical, sensory or mental capabilities or lack of experience and knowledge if they are supervised or have been instructed on how to use the unit in a safe way and they understand the hazards involved. Do not allow children to play with the unit. Only allow children to carry out cleaning and user maintenance under supervision.

## Safety information

- Only use original spare parts and accessories.
- Never carry out technical changes to the unit.
- Only carry out work on the unit that is described in this manual.
- Ensure that the filter will not overflow. Danger of emptying the pond.

## Intended use

Only use the product described in this manual as follows:

- For cleaning garden ponds.
- While adhering to the technical specifications. (→ Technical data)

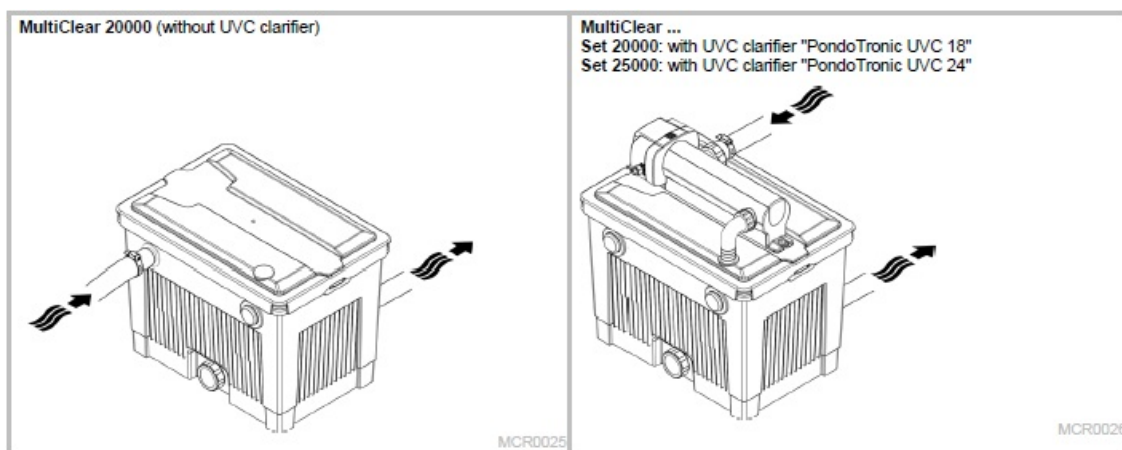
### The following restrictions apply to the unit:

- Never use the unit with fluids other than water.
- Do not use for commercial or industrial purposes.
- Do not use in conjunction with chemicals, foodstuff, easily flammable or explosive substances.

### Product Description

The MultiClear pond filter is a flow filter equipped with multiple foam filters for mechanical filtration of pond water. The UVC clarifier “PondoTronic UVC 18/24” can be installed on the pond filter. The application of UVC radiation upstream eliminates floating algae, bacteria and germs.

### The following variants of the MultiClear pond filter are available:



This user manual exclusively describes how to install the UVC clarifier on the filter. For further important information, refer to the user manual for the UVC clarifier “PondoTronic UVC 18/24”.

### Overview

?	A	MultiClear		
		2000 0	Set 2000 0	Set 2500 0
1	UVC clarifier “PondoTronic ...”	–	UVC 18	UVC 24
2	Fastening material for the UVC clarifier (in accessory pack)	–	✓	✓
3	90° bend with seal (in accessory pack) • Supply of pre-clarified water from the UVC clarifier.	–	✓	✓

4	<p>Inlet funnel (in accessory pack)</p> <ul style="list-style-type: none"> <li>• The funnel is installed during operation with a UVC clarifier.</li> <li>• 3 oval head screws 4.8 × 22 mm are included in the accessory pack for fastening.</li> </ul>	–	✓	✓
5	<p>Filter cover</p> <ul style="list-style-type: none"> <li>• The cover must be in place and locked during operation.</li> </ul>	✓	✓	✓
6	<p>Plug for filter cover</p> <ul style="list-style-type: none"> <li>• During operation without a UVC clarifier, the plug must be inserted.</li> </ul>	✓	–	–
7	<p>Inner cover</p> <ul style="list-style-type: none"> <li>• The foam filters are attached to the inner cover.</li> </ul>	✓	✓	✓
8	<p>Foam filter holder</p>	✓	✓	✓
9	<p>Foam filter</p> <ul style="list-style-type: none"> <li>• 2 × 10 ppi (blue), 2 × 20 ppi (black)</li> <li>• The foam filters can be arranged in any arrangement.</li> </ul>	✓	✓	✓
10	<p>Cover holder</p>	✓	✓	✓
11	<p>Filter housing</p>	✓	✓	✓
12	<p>Inlet opening</p> <ul style="list-style-type: none"> <li>• Supply of water to be filtered during operation without a UVC clarifier.</li> </ul>	✓	✓	✓
13	<p>Inlet nozzle (in accessory pack)</p>	✓	–	–
14	<p>Stepped hose adapter with flat seal (in accessory pack)</p> <ul style="list-style-type: none"> <li>• For connecting a hose with an internal diameter of 25, 32 or 38 mm.</li> </ul>	✓	–	–
15	<p>Plugs for inlet opening (2x)</p> <ul style="list-style-type: none"> <li>• For water-tight closing of the inlet openings while they are not in use.</li> </ul>	✓	✓	✓

16	Outlet opening • For connecting a pipe DN 50.	✓	✓	✓
17	Dirt outlet • Outlet for dirt water when cleaning the filter.	✓	✓	✓
18	Screw cap	✓	✓	✓
19	Sleeve set for outlet opening (optional accessories)	—	—	—

## Installation and connection

### Installing the device

MultiClear 20000	MultiClear Set 20000/Set 25000
It does not matter which inlet opening is used.  How to proceed: ? B	Read the user manual for the UVC clarifier. Note the information regarding removal of the unit head.  How to proceed: ? D

### Installing the unit

- Place the filter in a flood-protected location on firm and level ground.
- We recommend returning the clean water into the pond via a water course to add extra oxygen to the water. • The outlet line must slope toward the pond.
- To minimise pressure losses, keep the lines as short and straight as possible.
- Ensure unrestricted access to the cover so that work can be performed on the unit.
- Avoid exposing any unit components to direct sunlight for extended periods of time, as this can lead to damage. If necessary, use a protective cover.

MultiClear 20000	MultiClear Set 20000/Set 25000
—	<ul style="list-style-type: none"> <li>• Read the user manual for the UVC clarifier. Note the information regarding installation.</li> <li>• Due to the dangerous electrical voltage of the UVC clarifier, keep a safety distance of 2 m from the edge of the pond. (? E)</li> </ul>

## Connect the unit

MultiClear 20000	MultiClear Set 20000/Set 25000
How to proceed: ? C	<p>Read the user manual for the UVC clarifier. Note the information regarding how to establish the connections.</p> <p>How to proceed: ? F</p>

## Commissioning/start-up

- Switch on the filter pump and check the water flow in the filter.
- Check all lines and connections for leaks.

MultiClear 20000	MultiClear Set 20000/Set 25000
—	<p>First switch on the pump, then the UVC clarifier!</p> <p>Read the user manual for the UVC clarifier.</p> <p>Note the safety information and the information regarding switching the UVC clarifier on and off.</p>

## Maintenance and cleaning

Dismantling and assembling the unit

- To dismantle the filter, proceed as follows: ? G
- To assemble the filter, proceed as follows: ? H

Clean UVC clarifier

Read the user manual for the UVC clarifier. Note the information regarding cleaning.



## Cleanfilter

### NOTE

Do not use aggressive cleaning agents or chemical solutions. These agents can damage the housing, impair the function of the device and harm animals, plants and the environment.

► Clean the device only with clear water and a soft brush or sponge.

- Recommended cleaning agent for removing stubborn limescale deposits:

- Vinegar- and chlorine-free household cleaning agent.

### Cleaning the foam filter

Depending on the degree of soiling or wear, it is necessary to clean or replace the foam filters. • If there are several foam filters: Clean or replace the foam filters at different times. This saves enough useful bacteria to ensure good biological filtration of the water.

- Only rinse the foam filter in clean water.

### Storage/winter protection

Shut down the unit at water temperatures below +8 °C or at the latest when freezing temperatures are expected. • If a UVC clarifier is installed, remove it and store it in a dry place protected against freezing. For further information, see user manual for the UVC clarifier.

- Remove all filter elements, clean them and store them in a dry place protected against freezing.

- Drain the water remaining in the unit, in the hoses, pipes and connections as much as possible.

- Thoroughly clean the unit.

- Check the unit for damage and replace damaged components.

- Cover the container to prevent rain water from entering.

### Malfunction remedy

Malfunction	Cause	Remedy
The unit performance is not satisfactory	The unit has only been in operation for a short time	The full biological cleaning effect is only achieved after several weeks
	The water is extremely soiled	Remove algae and leaves from the pond
		Change the water
	Too many pond animals	Guide value: Max. 60 cm fish length in 1 m <sup>3</sup> pond water
	Foam filters soiled	Clean and, if necessary, replace the foam filters
	Filter housing or connections soiled	Clean filter housing / connections
	Flow rate is too high	Reduce the pump capacity
No water flow	Pump is not pumping water	Check pump (see pump user manual)
	Connections soiled	Clean connections

## Technical data

Description			MultiClear		
			20000	Set 20000	Set 25000
UVC clarifier *			–	PondoTronic UVC 18	PondoTronic UVC 24
Permissible water temperature range		°C	+4 ... +35	+4 ... +35	+4 ... +35
Maximum permissible flow rate		l/h	6000	6000	6000
Max. pond size	Without fish population	l	20,000	20,000	25,000
	With fish population	l	10,000	10,000	12,500
Connections	Water inlet	mm (in)	25, 32, 38 (1, 1¼, 1½)	25, 32, 38 (1, 1¼, 1½)	25, 32, 38 (1, 1¼, 1½)
	Water outlet		DN 50	DN 50	DN 50
	Dirt outlet		G2	G2	G2
Dimensions	Length	mm	380	380	380
	Width	mm	555	555	555
	Height	mm	415	535	535
Weight		kg	5.4	7.7	7.7

\* For further information, see user manual for UVC clarifier.

## Wear parts

- Foam filters

## Disposal

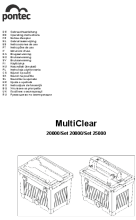
### NOTE

- Dispose of the unit by using the return system provided for this purpose.
- Should you have questions, please contact your local disposal company. They will give you information on how to correctly dispose of the unit.

### Guarantee conditions

PfG grants a 2 year guarantee from the date of sale on proven material and manufacturing faults. Wear parts such as bulbs etc. are exempted from the guarantee. Prerequisite for our guarantee is the presentation of the purchase receipt. Our guarantee will become null and void if the unit is misused, electrically or mechanically damaged by inappropriate use and improper repair by non-authorised workshops. Repairs are reserved for workshops authorised by PfG or by PfG itself. In the case of warranty claims, please return the defective unit or part freight paid to PfG together with a description of the fault and the purchase receipt. PfG reserves the right to invoice repair costs. PfG is not liable for transport damage. Any damage must be claimed against the carrier. Further claims of whatever type, especially consequential damage, are excluded. This guarantee does not affect the final customer's claims against the dealer.

## Documents / Resources

	<p><a href="#">Pontec 20000 Multi Clear Flow Through Filter</a> [pdf] Instruction Manual</p> <p>20000 Multi Clear Flow Through Filter, 20000, Multi Clear Flow Through Filter, Clear Flow Through Filter, Flow Through Filter, Through Filter, Filter</p>
---	---

## References

- [Faszination WasserGarten - Pontec](#)
- [User Manual](#)

### Manuals+ [Privacy Policy](#)

This website is an independent publication and is neither affiliated with nor endorsed by any of the trademark owners. The "Bluetooth®" word mark and logos are registered trademarks owned by Bluetooth SIG, Inc. The "Wi-Fi®" word mark and logos are registered trademarks owned by the Wi-Fi Alliance. Any use of these marks on this website does not imply any affiliation with or endorsement.