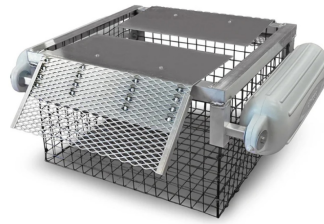


**POND KING 2.0 Floating Turtle Trap**



# POND KING 2.0 Floating Turtle Trap Instruction Manual

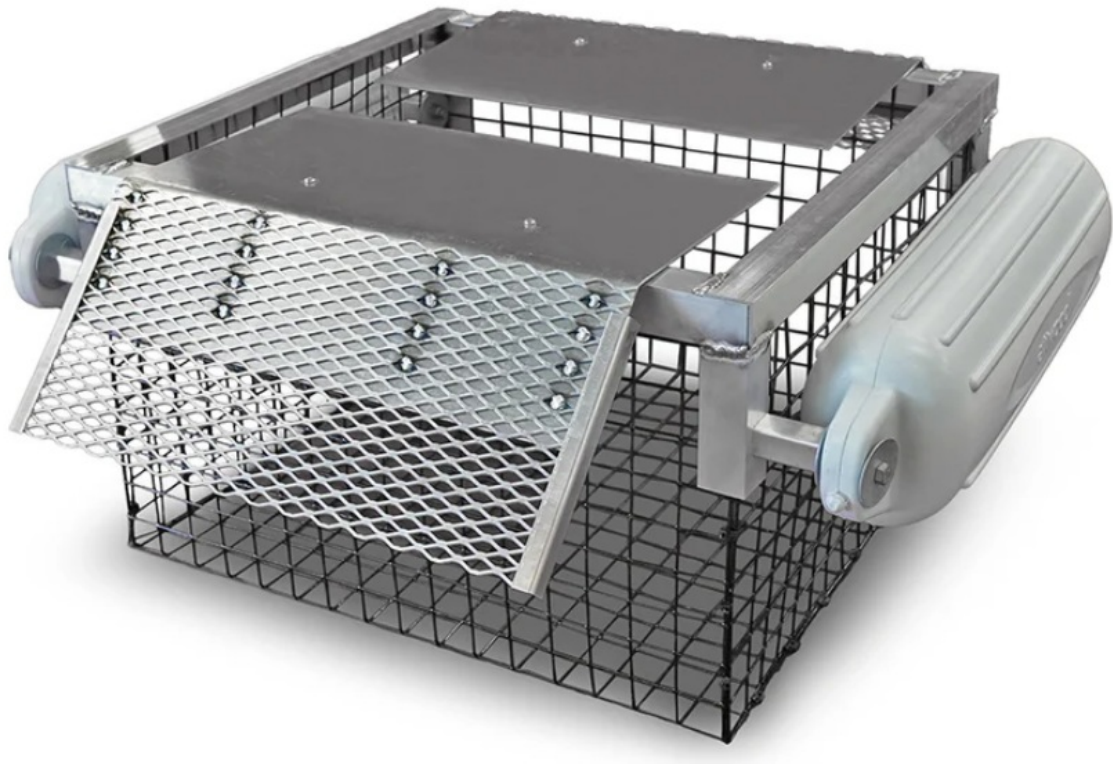
[Home](#) » [POND KING](#) » POND KING 2.0 Floating Turtle Trap Instruction Manual 

## Contents

- [1 POND KING 2.0 Floating Turtle Trap](#)
- [2 Product Information](#)
- [3 Product Usage Instructions](#)
- [4 Package Contents](#)
- [5 ASSEMBLY INSTRUCTION](#)
- [6 Documents / Resources](#)
  - [6.1 References](#)



## POND KING 2.0 Floating Turtle Trap



## Product Information

### Specifications:

- Mesh Cage
- Aluminum Frame
- 2 Flaps
- 2 Molded Vinyl Floats
- 16 Stainless Steel J-Clips
- 4 Galvanized 3/8 Bolts
- 4 Nuts
- 4 Square Tube Bushings
- 12 Large Flat Washers
- 4 Stainless Steel Screws with Lock Nuts

## Product Usage Instructions

### Step 1: Forming the Cage

Carefully fold back each of the four sides of the mesh panels to form the cage. Repeat the motion if needed to ensure the panels stand up straight.

### Step 2: Connecting Panels

Connect the panels in each corner using 4 stainless steel J-Clips per edge. Skip the 2nd and 3rd squares to leave room for the aluminum frame. See Figure 1 for reference.

### Step 3: Setting the Aluminum Frame

Place the aluminum frame on top of the cage, adjusting the mesh as needed. Press down on each side and corner until the frame is firmly level on top of the cage.

#### Step 4: Attaching Floats

Attach one of the vinyl floats with bolts, tube bushings, and washers to the outside of the frame and cage as shown in Figure 2.

#### Step 5: Securing Float Hardware

Secure the float hardware inside the cage using washers and nuts on each bolt. Position the washer between the mesh pieces for a secure fit. Repeat for the second float. See Figure 3.

#### Step 6: Attaching Flaps

Match the color-coded flaps to the correct side of the frame. Attach flaps to hinges using small stainless screws and nuts. Repeat for the second flap. See Figure 3 for guidance.

#### FAQ:

- **Q: What tools are needed for assembly?**

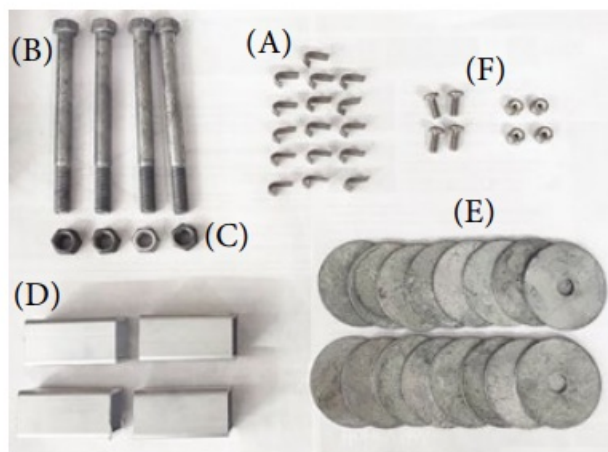
A: You will need a cordless drill/impact, crescent wrench, utility knife/clippers, Phillips head screwdriver, and pliers for assembly.

- **Q: Where can I find more pond management tips?**

A: Download our Pond King app from the App Store for additional pond management tips and information.

#### Package Contents

*FREE IN THE  
APP STORE*



- Mesh Cage
- Aluminum Frame
- 2 Flaps
- 2 Molded Vinyl Floats (A) 16 Stainless Steel J-Clips

#### Float Hardware

- (B) 4 Galvanized 3/8" Bolts
- (C) 4 Nuts

- (D) 4 Square Tube Bushings
- (E) 12 Large Flat Washers

## Flap Hardware

- (F) 4 Stainless Steel Screws with Lock Nuts

## Tools Needed

- Cordless Drill/Impact
- Crescent Wrench
- Utility Knife/Clippers
- Phillips Head Screwdriver
- Pliers

Download our Pond King app for more pond management tips and information!

## ASSEMBLY INSTRUCTION

SCAN HERE FOR ASSEMBLY VIDEO:



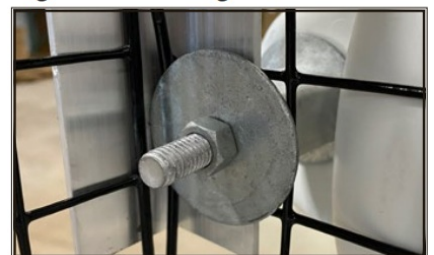
*Figure 1: Attach J-Clips*



*Figure 2: Outside Cage Float Hardware*



*Figure 3: Inside Cage Float Hardware*




- **Step 1:** Form the cage with the mesh panels. Carefully fold back each of the four sides. You may have to repeat the motion a few times on the same panel to get it to stand up straight.
- **Step 2:** In each corner, beginning with the top square, connect the panels using 4 stainless steel J-Clips (A) per edge, crimping each with a pliers. Secure clips on the top square, and continue down connecting the 4th, 6th, and 8th squares. You are skipping the 2nd and 3rd squares to leave room for the aluminum frame to fit onto the cage. See Figure 1.
- **Step 3:** Set the aluminum frame on top of the cage adjusting the mesh slightly as you press down on each side and corner until it's firmly level on top of the cage.
- **Step 4:** Line up one of the vinyl floats with 3/8" bolts (B), tube bushings (D) and large washers (E) to the outside of the frame and cage as pictured in Figure 2.

- **Step 5:** Secure the float hardware inside the cage using a flat washer (E) and nut (C) on each bolt. You'll need to position the washer in between the two pieces of mesh in the corner order for it to lay flat enough to secure the cage. Repeat for the second float. See Figure 3.
- **Step 6:** Notice the frame and flaps are color-coded with dots. Match up the correct flap to the correct side according to the dots. Attach flap to hinges on the frame with small stainless screws and nuts (F). Repeat for the second flap. See Figure 3.

Pond King, Inc. | 5924 West Highway 82, Gainesville, Texas 76240  
[940-668-2573](tel:940-668-2573)  
[www.pondking.com](http://www.pondking.com)

## Documents / Resources

	<p><a href="#">POND KING 2.0 Floating Turtle Trap</a> [pdf] Instruction Manual PK_TT_2-0, 2.0 Floating Turtle Trap, Floating Turtle Trap, Turtle Trap, Trap</p>
---	---

## References

- [Pond King Pontoon Boats, Floating Docks, Artificial Fish Habitats | Pond King – Pond King, Inc.](#)
- [User Manual](#)

[Manuals+](#), [Privacy Policy](#)

This website is an independent publication and is neither affiliated with nor endorsed by any of the trademark owners. The "Bluetooth®" word mark and logos are registered trademarks owned by Bluetooth SIG, Inc. The "Wi-Fi®" word mark and logos are registered trademarks owned by the Wi-Fi Alliance. Any use of these marks on this website does not imply any affiliation with or endorsement.