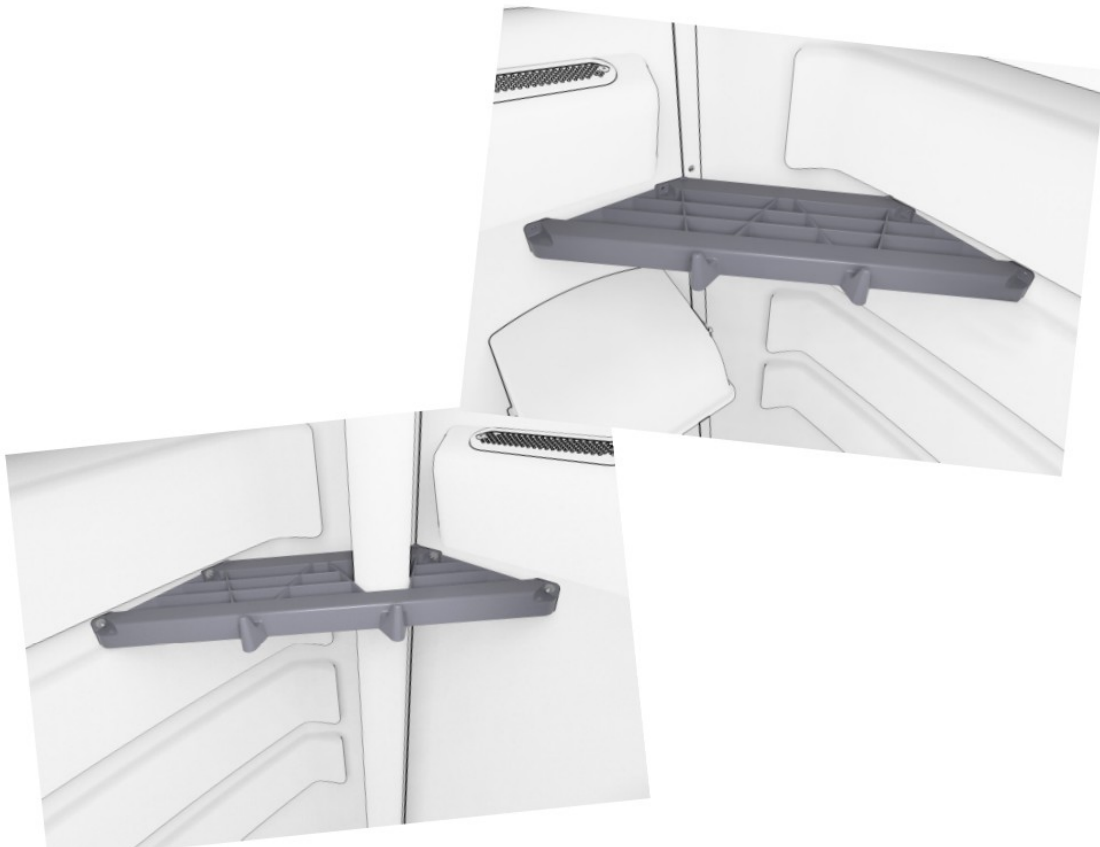


POLYJOHN SU3-0001F Convenience Shelf Product Instructions

[Home](#) » [POLYJOHN](#) » POLYJOHN SU3-0001F Convenience Shelf Product Instructions 



**Fleet Series TM Convenience shelf
PRODUCT INSTRUCTIONS**

Contents

- 1 General Overview
- 2 SPECIFICATIONS
- 3 Full Size Scale Fasteners
- 4 TOOLS REQUIRED FOR ASSEMBLY
- 5 INSTALLATION INSTRUCTIONS
- 6 REAR RIGHT CORNER
INSTALLATION
- 7 OUR MISSION STATEMENT
- 8 Documents / Resources
- 8.1 References

General Overview

The SU3-0001F – Fleet Series Convenience Shelf is an optional shelf available in pewter grey for the Fleet Series Portable Restroom. It is designed to fit in either of the rear corners. Shipped along with the SU02-0200 – Small Parts Kit that contains all the fasteners necessary for mounting.

FLEET CONVENIENCE SHELF

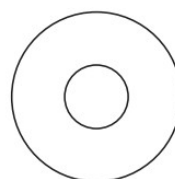
SPECIFICATIONS

Length	24.25 in	58.42 cm
Width	7.25 in	18.42 cm
Depth	1.50 in	3.81 cm
Weight	16 oz	0.45 kg

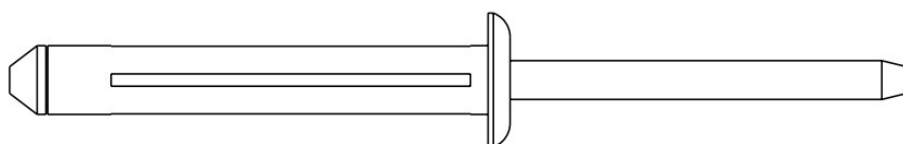
Full Size Scale Fasteners



(4) PC-000102 Rivet



(4) PC-000106 Washer



(1) PC-000117 Rivet

TOOLS REQUIRED FOR ASSEMBLY



Drill



13/64" Drill Bit



Rivet Gun



Utility Knife

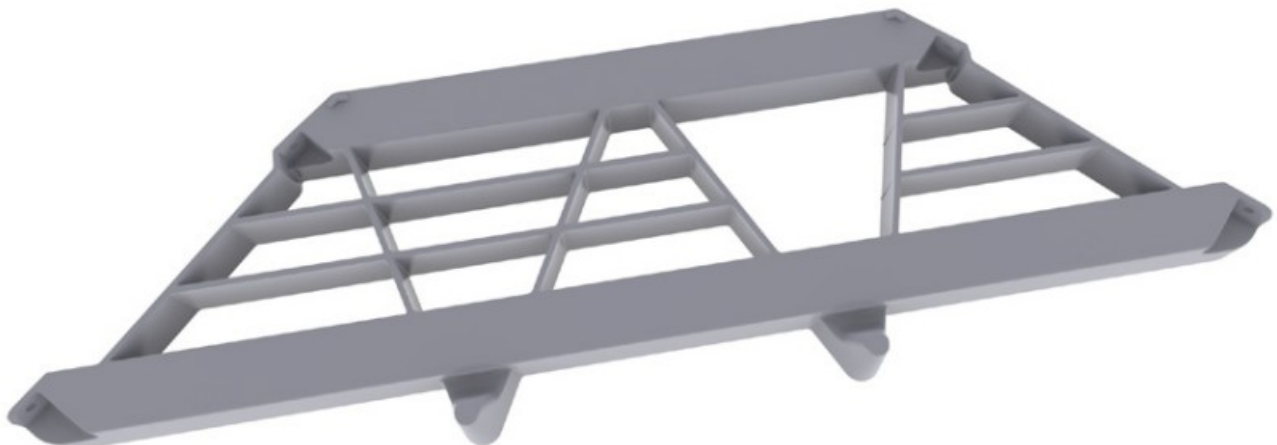
INSTALLATION INSTRUCTIONS

NOTE: The Fleet series convenience shelf installation will require two people.

REAR LEFT CORNER INSTALLATION

STEP 1:

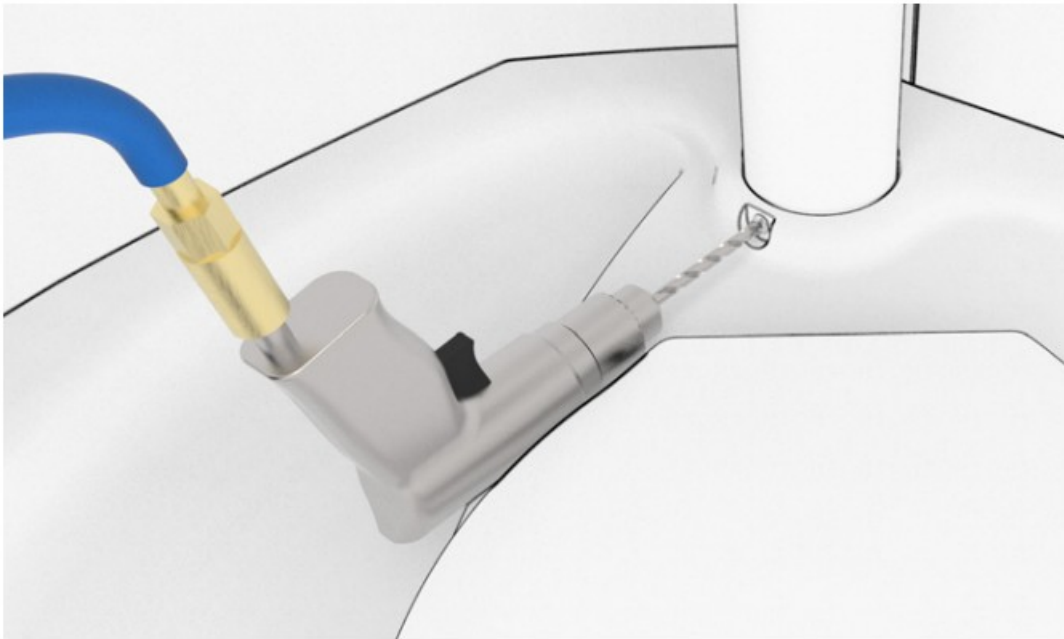
Cut the two ribs out of the shelf as shown to the right by using a utility knife.



STEP 2:

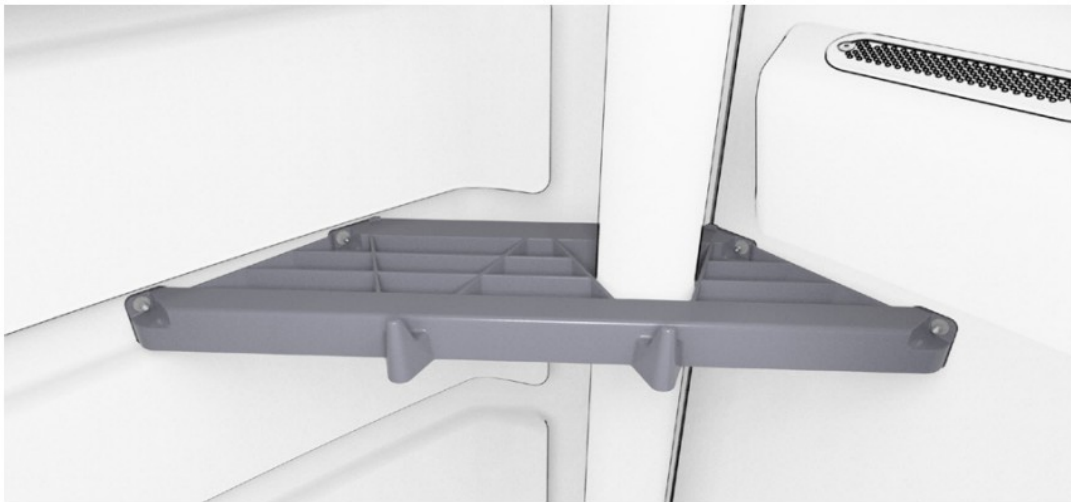
Using a drill with a 13/64" drill bit, drill out the rivet securing the vent stack to the holding tank.

Push the vent stack up slightly through the roof and out of the holding tank. Pull the vent stack out of the roof and place to the side.



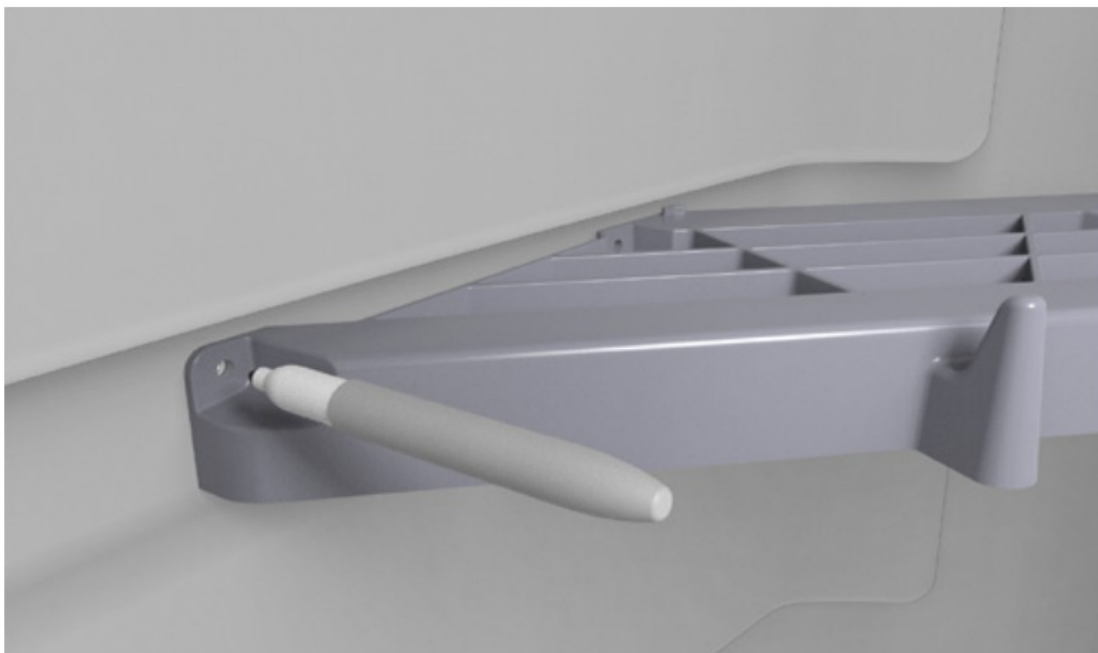
STEP 3:

Place the shelf in the location as shown to the right. Making sure the shelf is level and tight up against the side wall and rear panel, use a marker and mark the mounting hole locations on the side and rear panel.



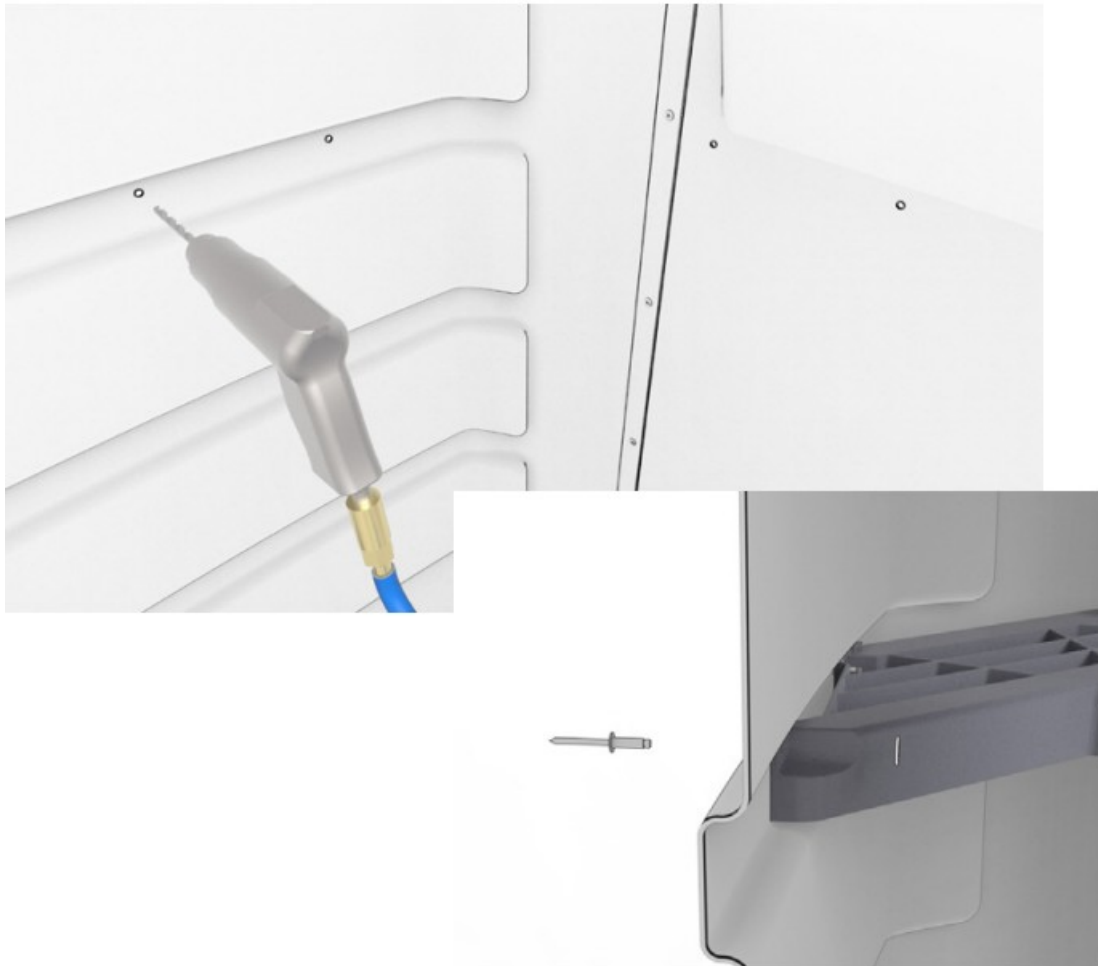
STEP 4:

Using a drill with a 13/64" drill bit, drill the mounting holes in the locations that were marked on the side wall and rear wall.



STEP 5:

Rivet in place using PC-000102 rivets from the outside with PC-000106 washers on the inside.



STEP 6:

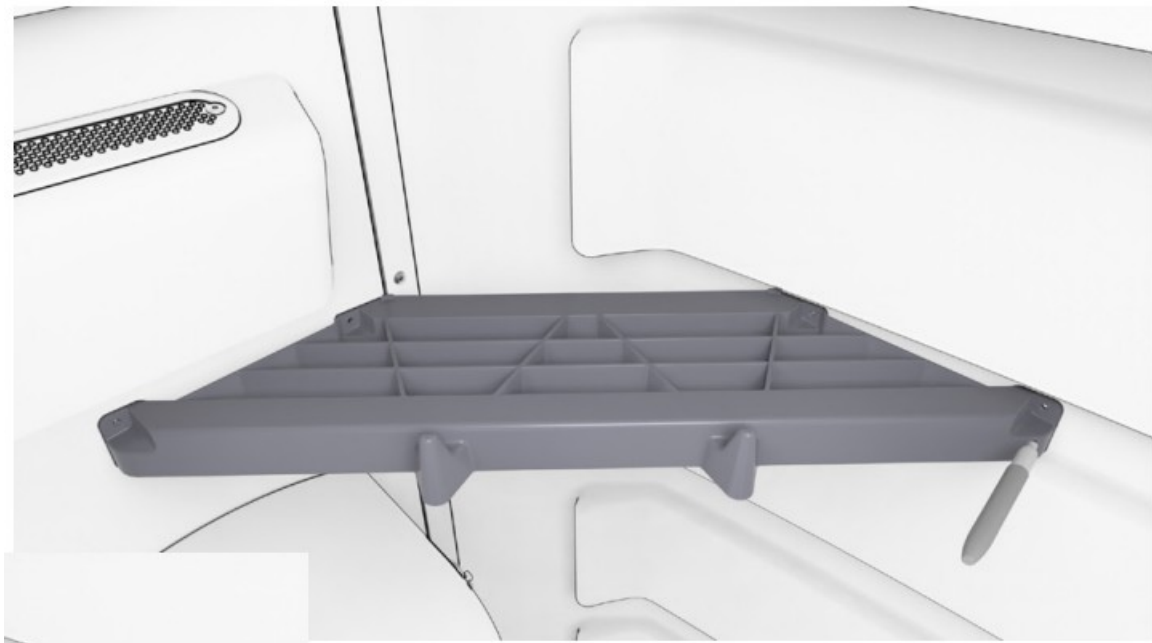
Reinstall the vent stack and rivet in place using a PC-000117 rivet.

Installation is complete.

REAR RIGHT CORNER INSTALLATION

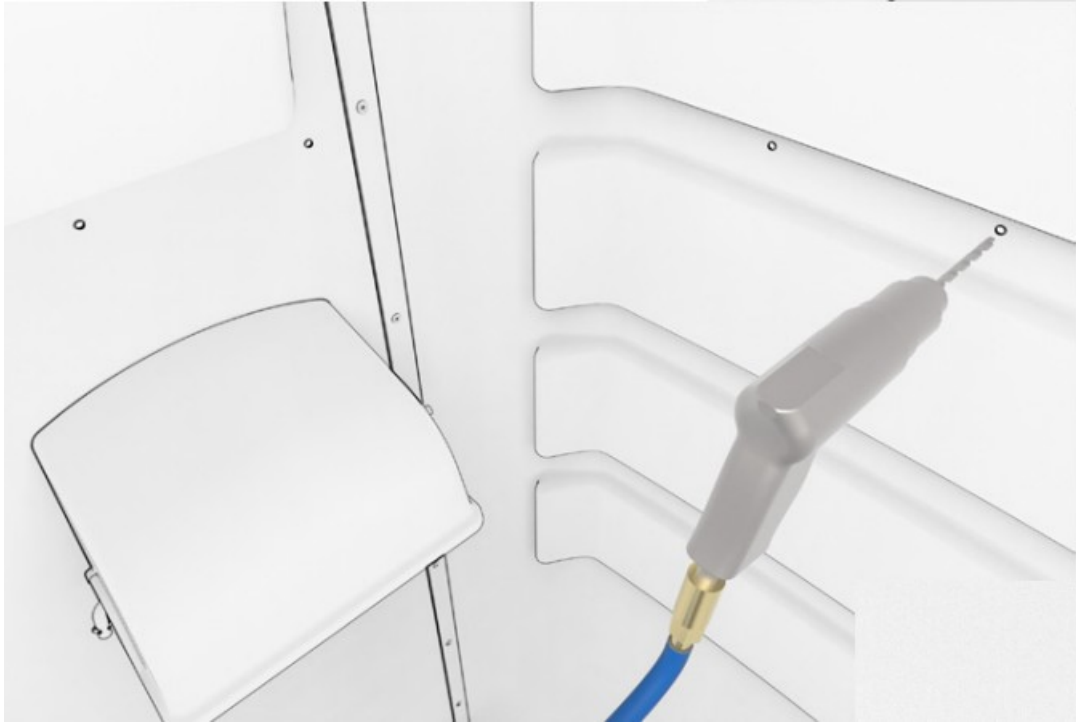
STEP 1:

Place the shelf in the location as shown to the right. Making sure the shelf is level and tight up against the side wall and rear panel, use a marker and mark the mounting hole locations on the side and rear panel.



STEP 2:

Using a drill with a 13/64" drill bit, drill the mounting holes in the locations that were marked on the side wall and rear wall.

**STEP 3:**

Rivet in place using PC-000102 rivets from the outside with PC-000106 washers on the inside.



Installation is complete.

OUR MISSION STATEMENT

"PolyJohn is a family owned, state of the art, plastics manufacturing company dedicated to providing its employees with a work environment committed to excellence, and its customers with innovative products, services and technology that meet or exceed their requirements."

THANK YOU FOR PURCHASING POLYJOHN PRODUCTS!

POLYJOHN USA +1 800-292-1305 Whiting, Indiana www.polyjohn.com	POLYJOHN INTERNATIONAL UNITED KINGDOM +44 (0) 1937-583333 Yorkshire, England www.polyjohn.co.uk	POLYJOHN INTERNATIONAL/ CZECH REPUBLIC +420 608 876 983 Karlový Vary, Czech Republic www.polyjohn.eu
POLYJOHN SOUTHERN AFRICA +27 (011) 615-3804 Johannesburg, South Africa www.polyjohn.co.za	POLYJOHN CANADA +1 800-465-9590 Orillia, Ontario www.polyjohn.ca www.fr.polyjohn.ca	POLYJOHN LATIN AMERICA +01 800-953-1307 Chihuahua, Mexico www.polyjohn.mx
POLYJOHN AUSTRALIA +61 7 3277 5727 Brisbane, Australia www.totalsanitationsolutions.com.au	POLYJOHN NEW ZEALAND +64 (0)27 257 6321 Auckland, New Zealand www.polyjohn.co.nz	POLYJOHN SOUTH AMERICA +57 318 696 7744 Bogotá, Colombia www.polyjohn.com



Documents / Resources

	<p>POLYJOHN SU3-0001F Convenience Shelf Product [pdf] Instructions SU3-0001F, SU02-0200, SU3-0001F Convenience Shelf Product, SU3-0001F, Convenience Shelf Product, Shelf Product, Product</p>
---	--

References

- [Portable sinks, toilets, and sanitation equipment | PolyJohn](#)
- [Portable sinks, toilets, and sanitation equipment | PolyJohn](#)
- [Portable sinks, toilets, and sanitation equipment | PolyJohn](#)
- [Portable sinks, toilets, and sanitation equipment | PolyJohn](#)
- [Portable Sinks & Toilets | Portable Restroom Manufacturer](#)
- [Portable sinks, toilets, and sanitation equipment | PolyJohn](#)
- [Portable sinks, toilets, and sanitation equipment | PolyJohn](#)
- [Portable Toilet, Shower, Hand Stations | Sales | Total Sanitation](#)
- [User Manual](#)