



Polygroup GENERATION II Twinkly Tree Controller Instruction Manual

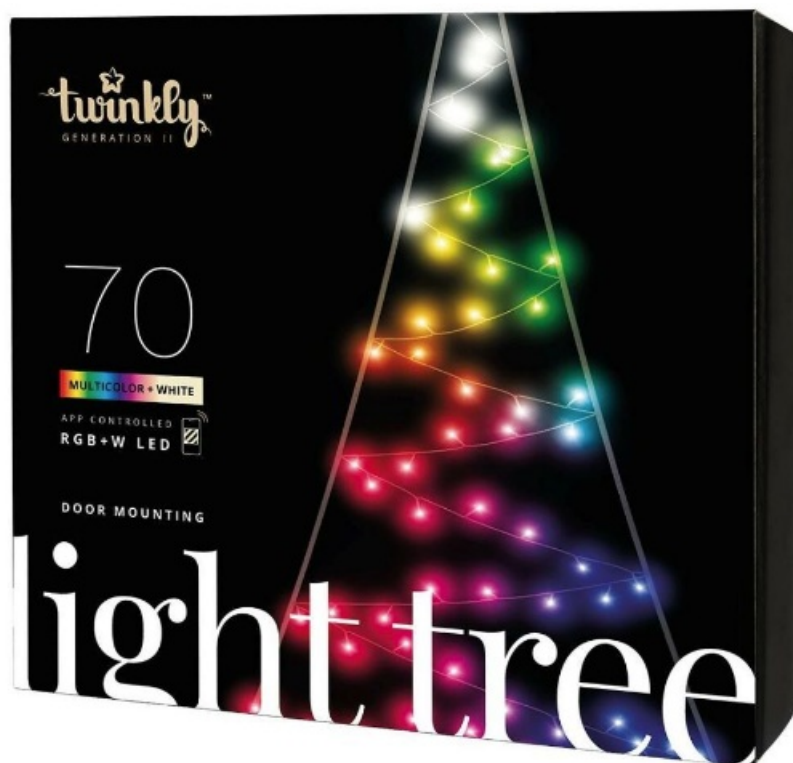
[Home](#) » [Polygroup](#) » Polygroup GENERATION II Twinkly Tree Controller Instruction Manual

Contents [[hide](#)]

- [1 Polygroup GENERATION II Twinkly Tree Controller](#)
- [2 Product Information](#)
- [3 App download & setup twinkly](#)
- [4 Connection modes](#)
- [5 Mapping](#)
- [6 Online manual](#)
- [7 Choose preset effects](#)
- [8 Reset twinkly](#)
- [9 FCC](#)
- [10 Documents / Resources](#)
- [11 Related Posts](#)



Polygroup GENERATION II Twinkly Tree Controller



Product Information

The product is called Twinkly and it is a smart LED light string that can be controlled through a mobile app. The product comes in different LED counts ranging from 210 to 750. There are two generations of controllers available for the product, and the user needs to choose the appropriate controller while setting up the product.

Setting up Twinkly

1. Download and install the Twinkly app.
2. Launch the Twinkly app.
3. Select the appropriate generation of controller for your tree on the app and follow the setup process.
4. Select the LED count of your Twinkly from the options provided.
5. You can connect the Twinkly to your home Wi-Fi network or use a direct Wi-Fi connection.
6. Once the setup process is complete, map out the layout of your decoration to unlock the full potential of your Twinkly tree like advanced effects, drawing, and many upcoming features.

Browsing and Editing Effects

The Twinkly app allows you to browse, play, and edit effects for your LED light string. You can also group multiple devices together and download new effects. Follow these steps to browse and edit effects:

1. Launch the Twinkly app.
2. From the Gallery, you can select pre-built effects or create new ones.
3. You can group multiple devices together to create a synchronized effect.
4. Edit or apply effects to your LED light string as desired.

Resetting Twinkly

If you need to reset your Twinkly, follow these steps:

1. Unplug the Twinkly power adapter from the AC outlet.
2. Press and hold the controller button.
3. While holding the button, plug in the Twinkly power adapter.
4. Keep holding the button until all LED lights on the tree turn red, then release the button.

Important Notices

The following notices are important to ensure the safe and proper use of Twinkly:

- All app illustrations in the user manual are a mere representation of the functionality and may vary from the actual app visuals.
- Ensure a moderate ambient light while mapping out the layout of your decoration (not too dark).
- Any changes or modifications not expressly approved by the party responsible for compliance could void the user's authority to operate the equipment.
- This device complies with part 15 of the FCC Rules and Innovation, Science, and Economic Development Canada licence-exempt RSS standard(s).
- The device should be installed and operated with a minimum distance of 20cm between the radiator and your body.

App download & setup twinkly

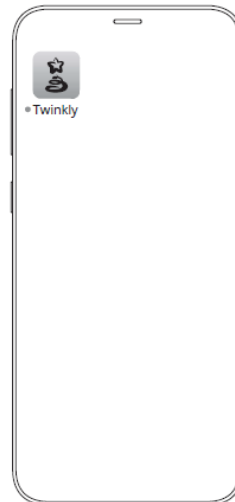
1.



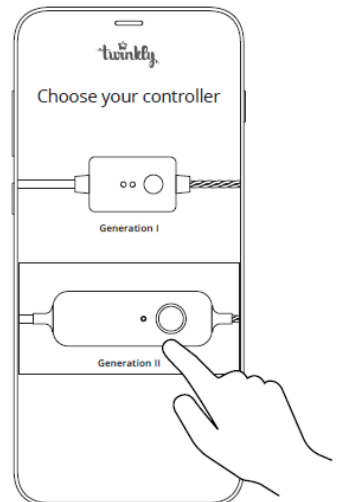
2.



3.



4.

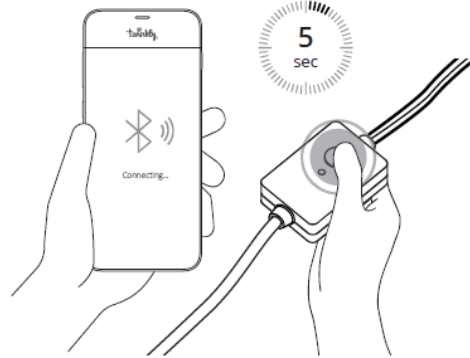
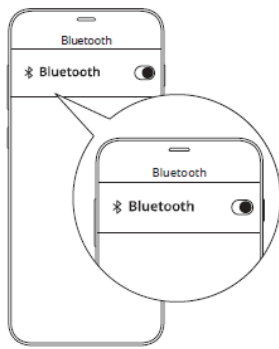


1. Go to App Store/Google Play Store (or scan QR code).
2. Download and install the Twinkly app.
3. Launch Twinkly app.
4. Select the GENERATION II controller for your tree. Follow the setup process on the app.

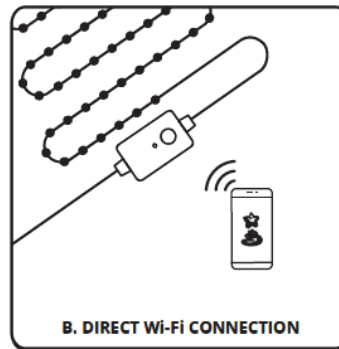
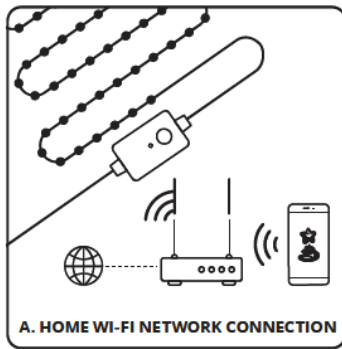
Note: All app illustrations in this document are a mere representation of the functionality and may vary from the actual app visuals.

Connection modes

1.

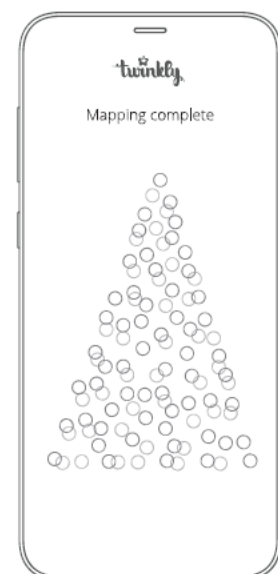
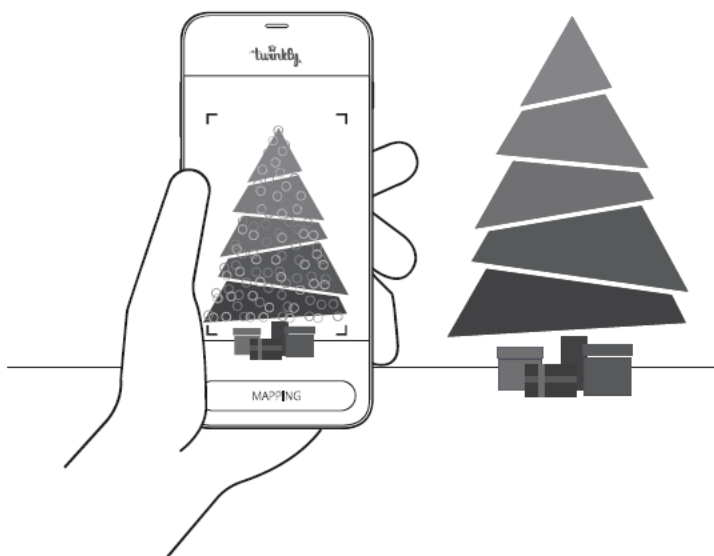


2.



1. Twinkly uses Bluetooth for the setup process only. Wi-Fi connection is required for operation. You can use:
 1. Home Wi-Fi network connection (recommended):
Connect with your home/office WiFi from the list of available networks.
 2. Direct Wi-Fi connection: Select “Twinkly xxxxxx” WiFi from the list of available networks. Password: Twinkly2019
(**NOTE:** the internet on your phone will not be available in this case)
2. Select the correct light count of your tree and tap “Configure” to complete the connection to your Twinkly tree.

Mapping



Map the layout of your decoration to unlock the full potential of your Twinkly tree like advanced effects, drawing and many upcoming features.

1. Frame the tree from a distance of 1.5-2.5 meters.
2. Open Layout and tap the “Map Lights” button. All LEDs will illuminate with different colors during the process.
3. Once the process is completed, return to the Effects Gallery to enjoy advanced preset and customizable effect.

Mapping tips



Note: For best results, avoid reflective surfaces behind the tree, keep the mobile camera steady during the process and ensure a moderate ambient light (not too dark).

Online manual



Browse, play and edit effects



Create new effects



Group multiple devices together



Download new effects

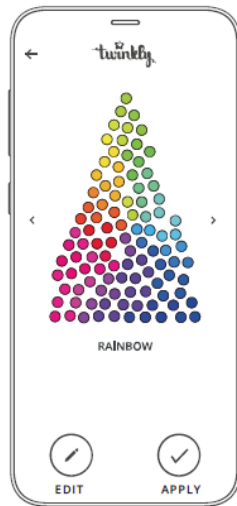


Choose preset effects

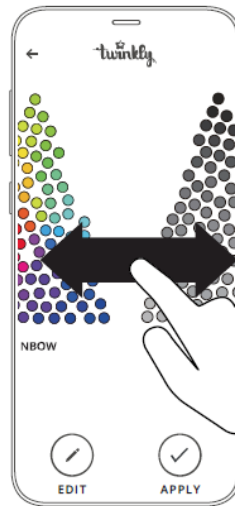
1.



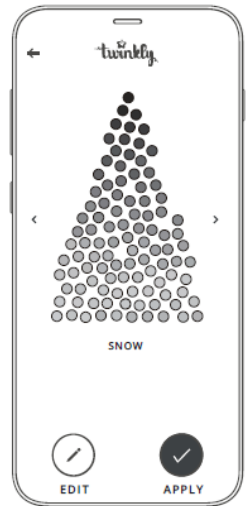
2.



3.



4.

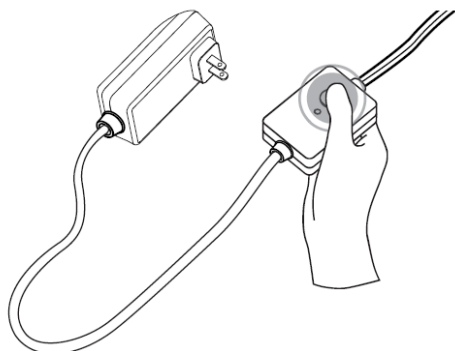


1. Open the Effects Gallery.
2. Select the desired effect to see the real-time preview on your Twinkly set-up.
3. Swipe left or right to browse effect.
4. Tap "Apply" to store the effect and play continuously.

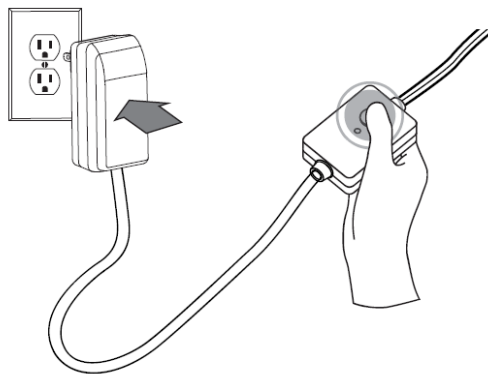
Note: App user interface may change due to technical updates and improvements.

Reset twinkly

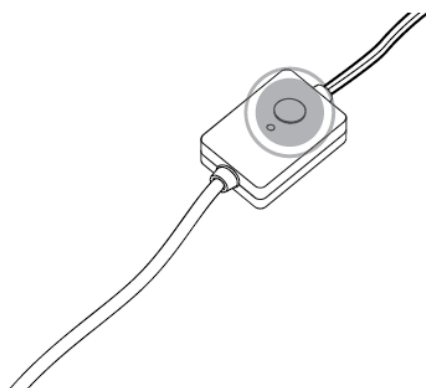
1.



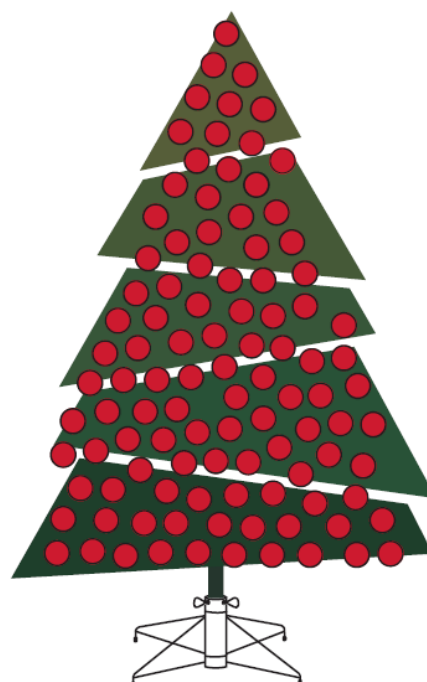
2.



3.



RED



1. Unplug the Twinkly power adapter from the AC outlet. Press and hold the controller button.
2. While holding the button, plug in the Twinkly power adapter.
3. Keep holding the button until all LED lights on the tree turn red, then release the button.

FCC

Any Changes or modifications not expressly approved by the party responsible for compliance could void the user's authority to operate the equipment. This device complies with part 15 of the FCC Rules. Operation is subject to the following two conditions: (1) This device may not cause harmful interference, and (2) this device must accept any interference received, including interference that may cause undesired operation.

IMPORTANT NOTE:

Note: This equipment has been tested and found to comply with the limits for a Class B digital device, pursuant to part 15 of the FCC Rules. These limits are designed to provide reasonable protection against harmful interference in a residential installation. This equipment generates, uses and can radiate radio frequency energy and, if not

installed and used in accordance with the instructions, may cause harmful interference to radio communications. However, there is no guarantee that interference will not occur in a particular installation. If this equipment does cause harmful interference to radio or television reception, which can be determined by turning the equipment off and on, the user is encouraged to try to correct the interference by one or more of the following measures:

- Reorient or relocate the receiving antenna.
- Increase the separation between the equipment and receiver.
- Connect the equipment into an outlet on a circuit different from that to which the receiver is connected.
- Consult the dealer or an experienced radio/TV technician for help.

FCC Radiation Exposure Statement:


- This equipment complies with FCC radiation exposure limits set forth for an uncontrolled environment.
- This equipment should be installed and operated with minimum distance 20cm between the radiator& your body.

This device complies with Innovation, Science, and Economic Development Canada licence-exempt RSS standard(s). Operation is subject to the following two conditions:

1. this device may not cause interference, and
2. this device must accept any interference, including interference that may cause undesired operation of the device.

The device is compliance with RF exposure guidelines, users can obtain Canadian information on RF exposure and compliance. The minimum distance from body to use the device is 20cm.

Documents / Resources

	Polygroup GENERATION II Twinkly Tree Controller [pdf] Instruction Manual TBC005, 2A62O-TBC005, 2A62OTBC005, GENERATION II, GENERATION II Twinkly Tree Controller, Twinkly Tree Controller, Controller
---	--