



poly Rove 30 Dect IP Phone User Guide

[Home](#) » [Poly](#) » poly Rove 30 Dect IP Phone User Guide 



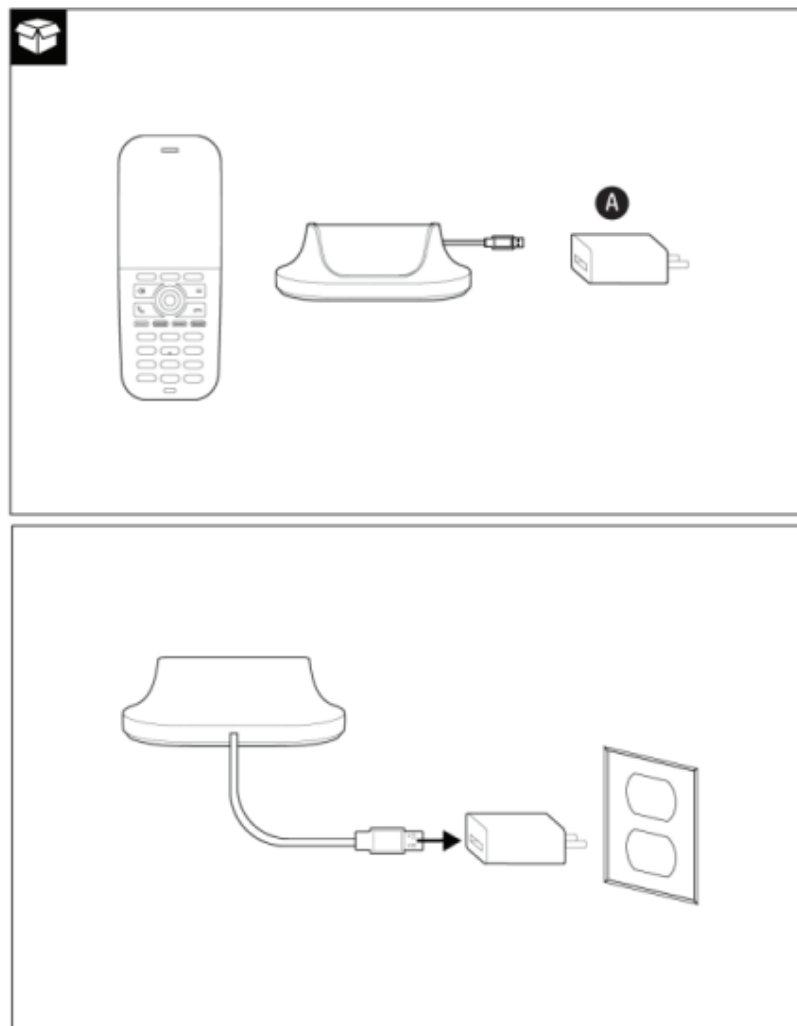
**POLY ROVE 30/40
DECT IP PHONE**

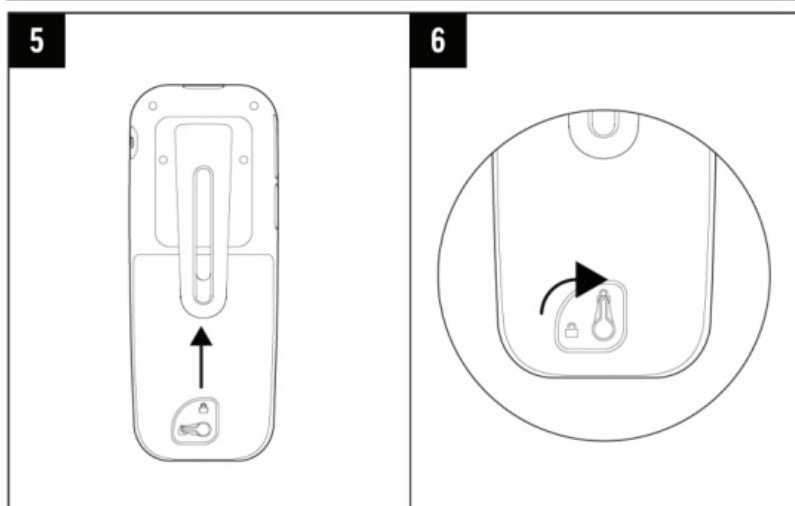
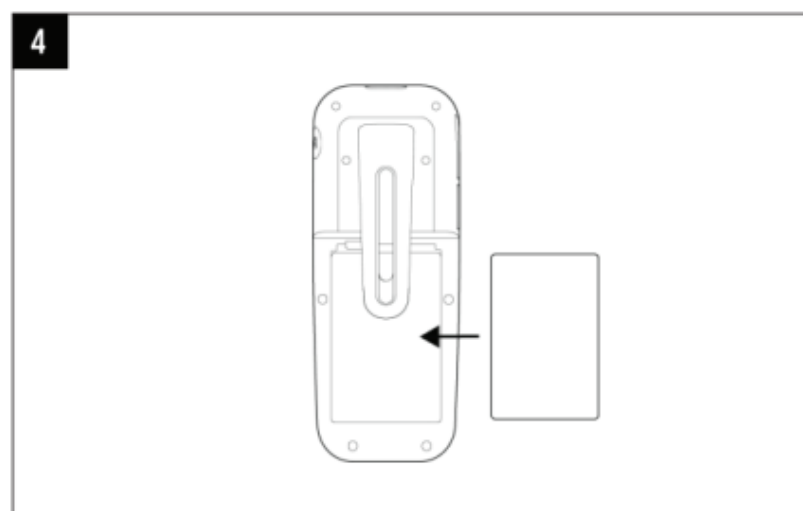
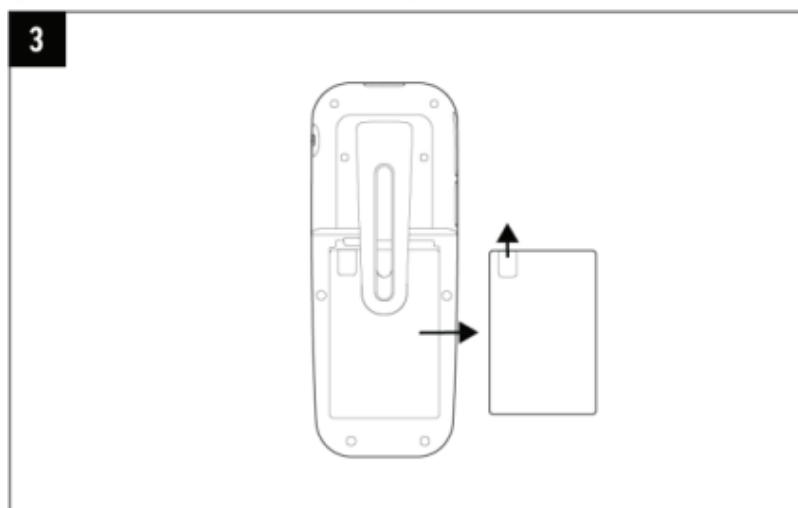
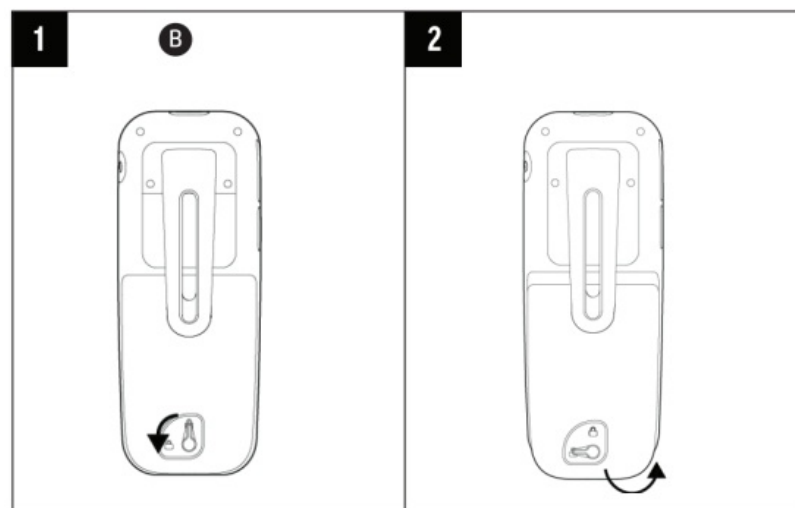


Contents

- 1 Rove 30 Dect IP Phone
- 2 POLY ROVE 30/40 DECT IP PHONE
- 3 Product Description and Specifications
- 4 Instructions for Use
- 5 Maintenance Instructions
- 6 Troubleshooting
- 7 Storage and Transportation
- 8 Safety and Regulatory
- 9 Documents / Resources
- 9.1 References

Rove 30 Dect IP Phone





POLY ROVE 30/40 DECT IP PHONE

A 5V USB power adapter (varies by country)

B REMOVE BATTERY FILM

Product Description and Specifications

Poly Rove DECT IP phones are standalone IP-based wireless phones.

Screen: 2.4" Color LCD

DECT frequency: 1920-1930 MHz (North America), 1880-1900 MHz (EU/ANZ/UK)

Handset display: 2.4" TFT color LCD with backlight display (240 x 320 pixels 64K)

Operating temperature: -10°C to 55°C (14°F to 131°F)

Power

Exteneral Universal AC adapter (5V 1A DC)

1100mAh Li-ion battery

Up to 18 hours talk time, Up to 300 hours standby time

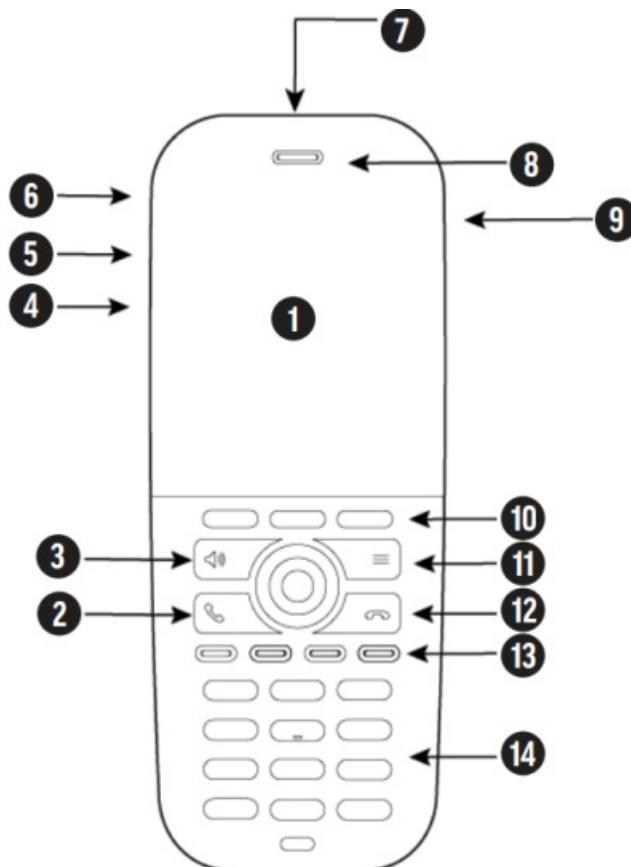
Instructions for Use

Power the Phone Off and On

To turn off the phone, press and hold the End key until the handset powers off.

To turn on the phone, press and hold the End key again until the handset powers on.

Poly Rove 30/40 DECT IP Phone Hardware



1. Screen
2. Answer/Place Call
3. Speakerphone
4. Mute/Push to Talk
5. Volume Down
6. Volume Up

7. Emergency Button (Rove 40 only)
8. Speaker/LED Status Indicator
9. Headset Port
10. Softkeys
11. Menu
12. End Call
13. Programmable Keys
14. Dialpad

LED Status Indicators

Green – Voice message

Yellow – Low battery

Red – Missed call

Flashing red and green – Software update

Maintenance Instructions

When cleaning phones with keypads or phone accessories, be careful to not let any of the disinfecting solution seep into the phone or accessory.

1. Unplug all cables from the phone and accessories.
2. Dip a cotton ball into a medicinal isopropyl alcohol and water solution of 70:30, making sure to squeeze out any excess liquid.
3. Wipe all hardware surfaces and be careful not to wipe ports or cable connections.
4. Dip a cotton swab into the alcohol/water solution and clean around the buttons.
5. Let the phone and accessories air-dry completely before reconnecting any cables.

Troubleshooting

Search for product information and answers in the Product Documentation at <https://docs.poly.com>.

Find troubleshooting information in the Knowledge Base at <https://h30434.www3.hp.com/>.

Contact Technical Support at <https://www.hp.com/us-en/contact-hp/contact.html>.

Recycling Poly Products

Poly offers free recycling of its branded products to users. Detailed information is available at

<https://hp.com/recycle>.

Storage and Transportation

Should you need to store the product for a long period of time, you may switch off the mains power supply. Note: Removing power from the product makes it inaccessible remotely for software updates, diagnosis and management.

Period of storage: 7 years under appropriate storage conditions

Storage and transportation temperature: -25°C to 70°C (-13°F to 158°F)

Relative humidity (non-condensing): 5% to 95%

Manufacturing


Find the date of manufacture on the outer packaging of the product in the following format: YYYYMMDD.

Product Serial Number

The product serial number is included on the serial number label in the following format: 12 alphanumeric characters.


Safety and Regulatory

See the enclosed printed Safety Insert, and refer to the Poly Rove Safety and Regulatory Guide on hp.support.com/poly for all regulatory and safety guidance prior to setup and configuration.




support.hp.com/poly

Poly Rove





↓

poly.com/lens




© 2024 HP Development Company, L.P.

 DECT is a trademark of ETSI. All trademarks are the property of their respective owners.



1725-34010-024A 07.24
Rove 30; Rove 40




Documents / Resources



[poly Rove 30 Dect IP Phone](#) [pdf] User Guide

Rove 30, Rove 30 Dect IP Phone, Dect IP Phone, IP Phone, Phone

References

-  [Poly Documentation Library](#)
-  [Home - HP Support Community](#)
-  [Contact HP | HP® Official Site](#)
- [User Manual](#)

[Manuals+](#). [Privacy Policy](#)

This website is an independent publication and is neither affiliated with nor endorsed by any of the trademark owners. The "Bluetooth®" word mark and logos are registered trademarks owned by Bluetooth SIG, Inc. The "Wi-Fi®" word mark and logos are registered trademarks owned by the Wi-Fi Alliance. Any use of these marks on this website does not imply any affiliation with or endorsement.