



poly RC-SDA Sound Control Technologies User Guide

[Home](#) » [Poly](#) » poly RC-SDA Sound Control Technologies User Guide 

Contents

1

poly RC-SDA Sound Control Technologies

2

Product Information

3

Product Usage Instructions

4

Overview

5

Module Dimensions

6

Documents / Resources



poly RC-SDA Sound Control Technologies



Product Information

The Poly EagleEye IV with Producer is a video conferencing camera system that includes the following

components:

- Poly Provided Cable
- RC-SDATM & RC4 Producer™ Application Guide
- PolyRPG300, RPG500, RPG700 & RPG7500
- RC-SDATM
- RCC-M001-1.0M RCC-H001-1.0M DB9toDB9RS232 HDMItoHDMICable
- RC4-HETM
- RC4-CETM
- HDMItoUSB Converter
- W PS-1230VDC 100-240V 47-63Hz PowerSupply
- RCC-M002-1.0M 3-Pin Phoenix to DB9-F
- Laptop
- SCTLink™ Cable
- Power, Control, Audio & Video

Product Usage Instructions

To use the Poly EagleEye IV with Producer, please follow these instructions:

Step 1: Connecting the Components

1. Connect the Poly Provided Cable to the appropriate ports on the camera system and other devices as needed.
2. Refer to the RC-SDATM & RC4 Producer™ Application Guide for specific instructions on connecting the RC-SDATM and RC4 Producer™.
3. Use the provided HDMItoHDMICable to connect compatible devices.
4. If required, use the HDMItoUSB Converter to connect the camera system to a USB port.
5. Connect the W PS-1230VDC 100-240V 47-63Hz PowerSupply to provide power to the camera system.
6. Use the RCC-M002-1.0M 3-Pin Phoenix to DB9-F cable for any additional connections. Connect the laptop to the camera system using the SCTLink™ Cable.

Step 2: SCTLink™ Cable Specifications

The SCTLink™ cable must always be a single, point-to-point CAT cable with no couplers or interconnections.

Use integrator-supplied CAT5e/CAT6 STP/UTP cable with either T568A or T568B wiring standards. The cable length should be between 10m and 100m.

Step 3: Pinout Information

The RJ45 pinout for the SCTLink™ Cable is as follows:

Pin	T568A	T568B
1	g	o
2	o	O
3	g	b
4	B	b
5	B	g
6	o	g
7	B	r
8	r	B

Step 4: Module Dimensions

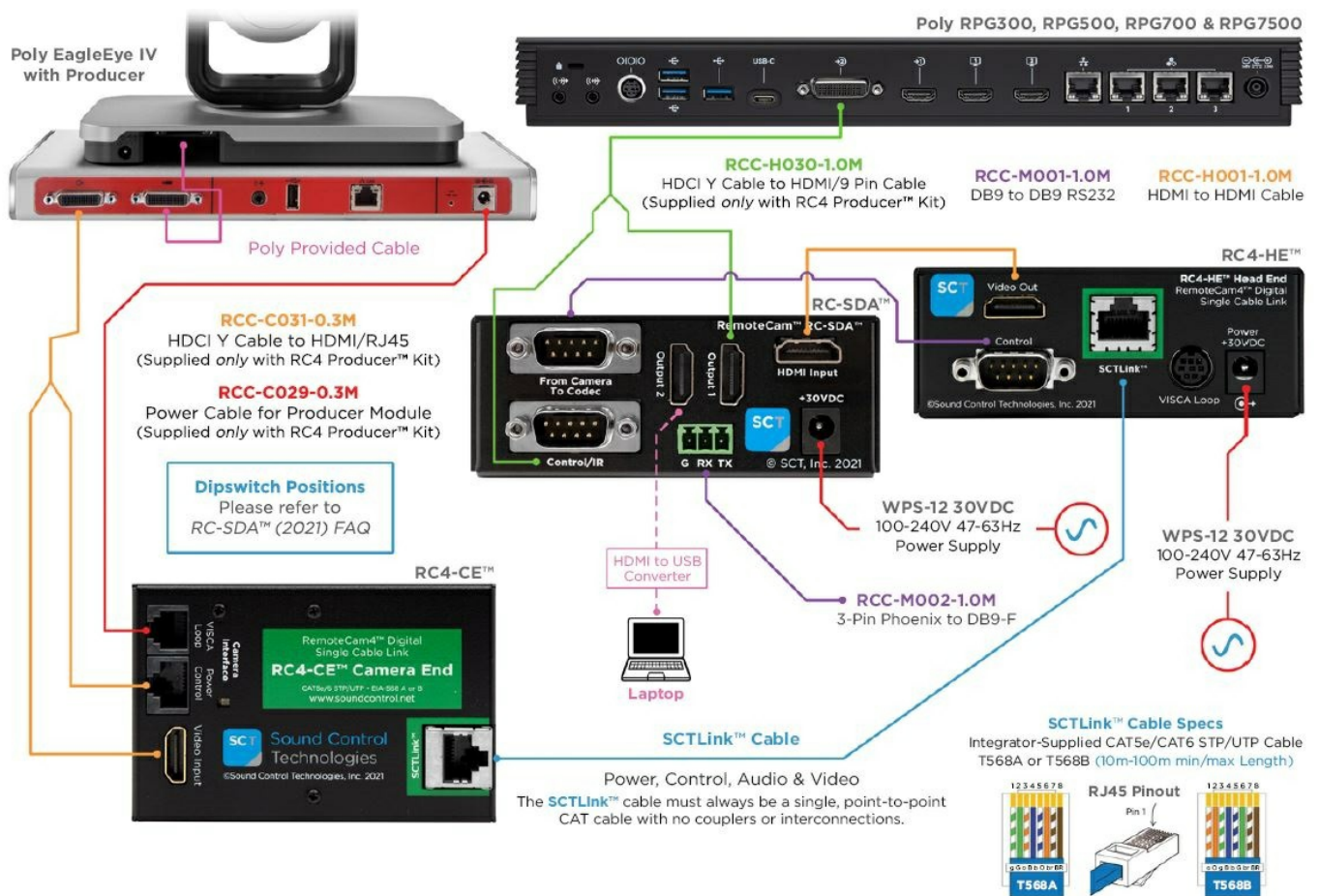
The dimensions for the different modules are as follows:

- RC4-CETM: H: 0.93" (23mm) x W: 2.5" (63mm) x D: 3.741" (95mm)
- RC4-HETM/RC-SDATM: H: 1.504" (38mm) x W: 3.813" (96mm) x D: 3.617" (91mm)

Please refer to the complete user manual for detailed instructions on setting up and using the Poly EagleEye IV with Producer.

RC-SDA™ & RC4 Producer™ Application Guid

Overview



Module Dimensions

- RC4-CE™. H: 0.93" (23mm) x W: 2.5" (63mm) x D: 3.741" (95mm)
- RC4-HE™/RC-SDA™. H: 1.504" (38mm) x W: 3.813" (96mm) x D: 3.617" (91mm)

Documents / Resources

	<p>poly RC-SDA Sound Control Technologies [pdf] User Guide</p> <p>RC-SDA Sound Control Technologies, RC-SDA, Sound Control Technologies, Control Technolo</p> <p>gies</p>
--	---