

Poll Everywhere Activity Flow Types Installation Guide

[Home](#) » [Poll Everywhere](#) » Poll Everywhere Activity Flow Types Installation Guide 



NEW ENGLAND LAW  BOSTON
Guide 012: Activity Flow Types

Contents

- [1 Activity Flow Types](#)
- [2 INSTRUCTOR FLOW](#)
- [3 Activity Types](#)
- [4 Documents / Resources](#)
- [5 Related Posts](#)

Activity Flow Types

When inserting activities into your PowerPoint presentation, you'll have the option of using the Default mode or the Activity flow. In this guide you will learn more about the activity flow types and how to apply them to your PowerPoint presentation.

Note: Activity flow is only available for Multiple choice and Survey activities.

When inserting activities into your PowerPoint presentation, you'll have the option of using the Default mode or the Activity flow. There are two types of activity flow:

Instructor and Engagement. Default flow [1]: Poll Everywhere will insert one slide into your PowerPoint presentation, which you'll be able to interact with via the slide tools at the bottom of the screen.

Instructor flow [2]: If you've designated at least one correct answer for the activity, then you'll be able to choose the Instructor flow. The system will insert three slides:

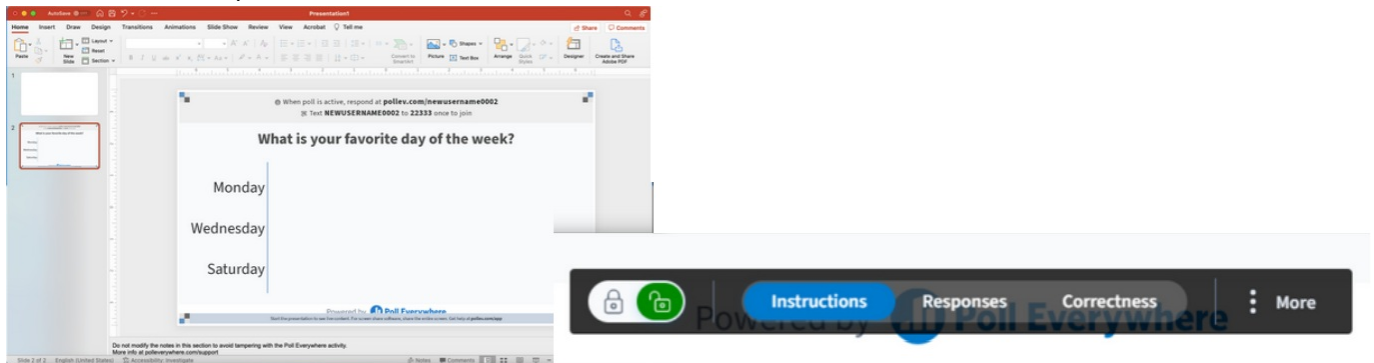
Instructions slide, Results slide (responses are locked when you navigate to this slide), and Correctness slide (revealing the correct option(s) to the audience).



Activity Flow Types

DEFAULT FLOW

Poll Everywhere will insert one slide into your PowerPoint presentation which you'll be able to interact with via the slide tools when in presentation mode.



Slide tools appear when you hover your mouse toward the bottom of the PowerPoint when in presentation mode.

INSTRUCTOR FLOW

The system will insert three slides: Instructions slide, Results slide (responses are locked when you navigate to this slide), and Correctness slide (revealing the correct option(s) to the audience).

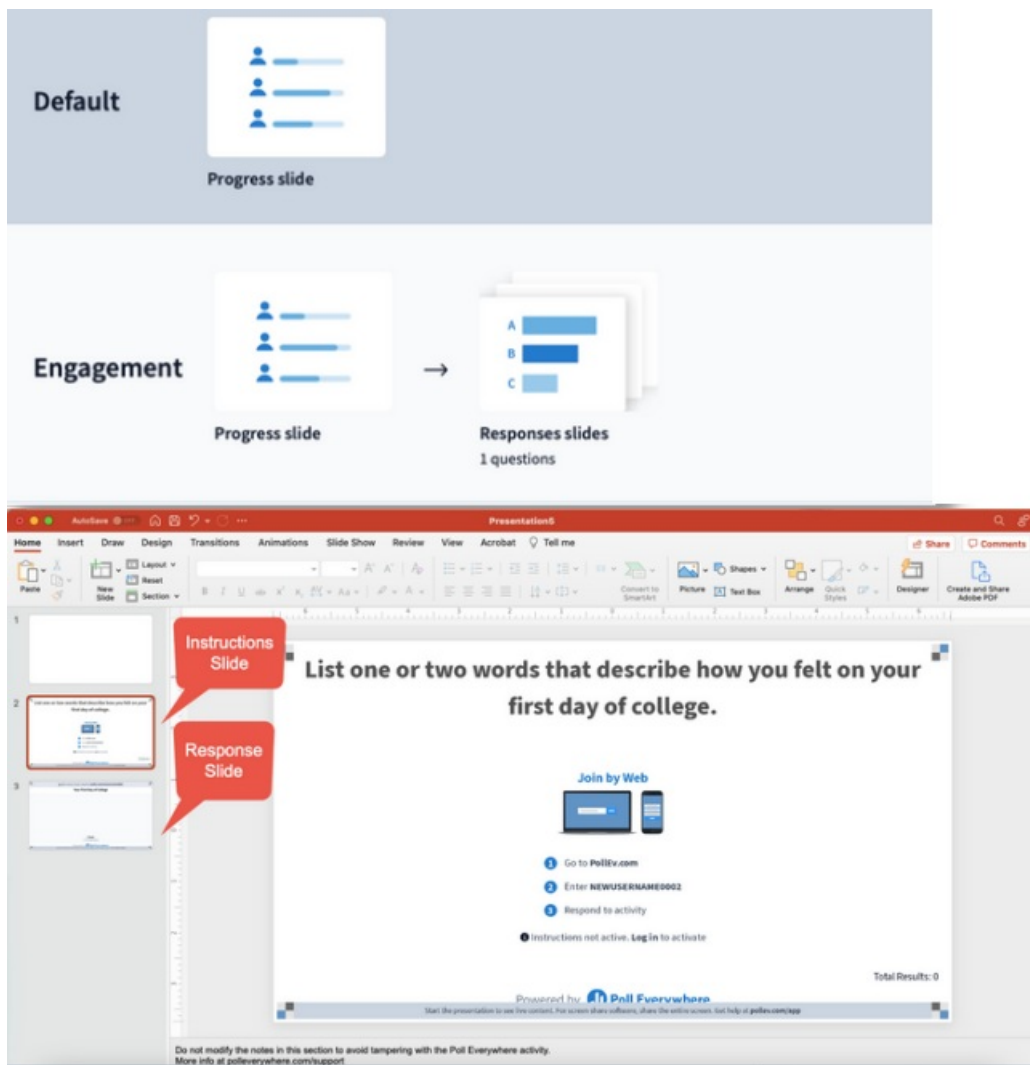
The screenshot shows a presentation software interface with a red ribbon at the top. The ribbon includes tabs for Home, Insert, Draw, Design, Transitions, Animations, Slide Show, Review, View, Acrobat, and Tell me. The main area displays a slide titled "What is your favorite day of the week?". The slide content includes a poll question and three options: Monday A, Wednesday B, and Saturday C. A status bar at the bottom indicates "Slide 4 of 4" and "English (United States)".



Activity Types

ENGAGEMENT FLOW


If no correct option has been set, you'll have the option to select the Engagement flow. The system will insert an instruction slide and a response slide.



NOTE When inserting, you will need to select an individual activity in order to be presented with the Activity flow options. If you bulk insert, the Default flow will be inserted.

INSTRUCTIONALSUPPORT@NESL.EDU

Documents / Resources

	<p>Poll Everywhere Activity Flow Types [pdf] Installation Guide Activity Flow Types, Flow Types, Activity Flow</p>
---	--