



POLIVAC Predator MK II Carpet Extractor Machine User Manual

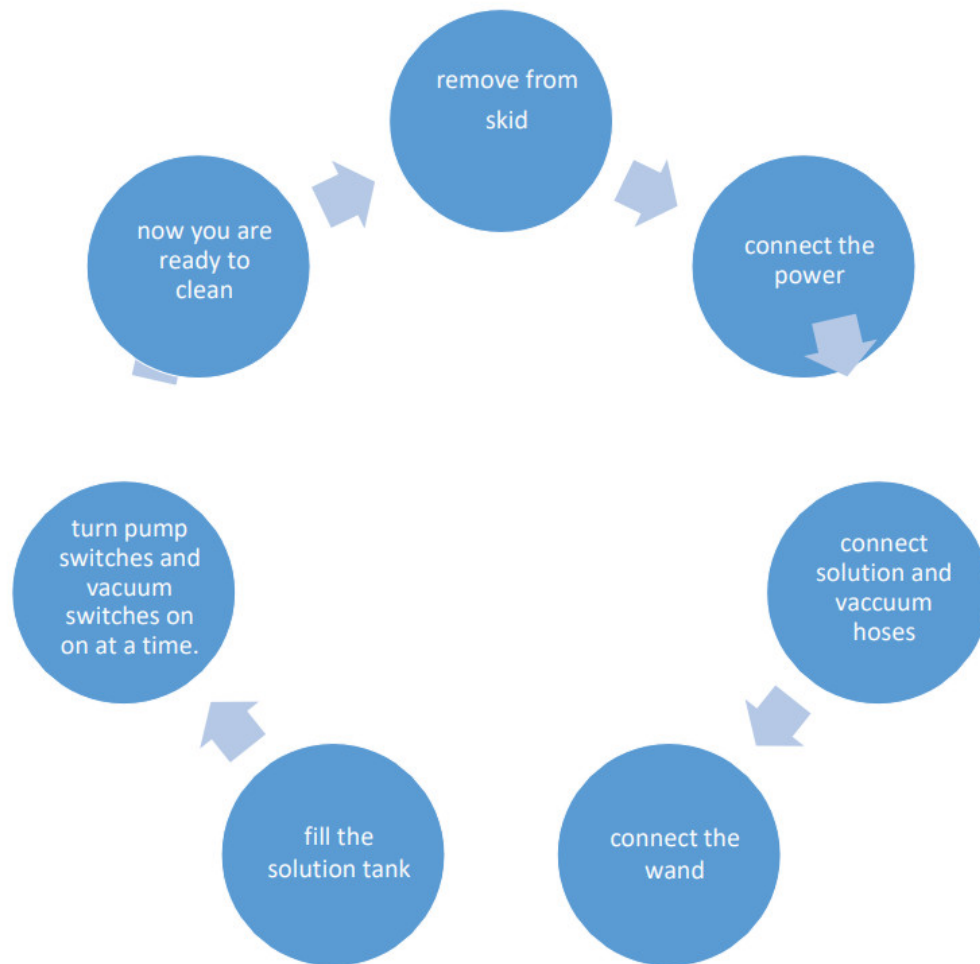
[Home](#) » [POLIVAC](#) » POLIVAC Predator MK II Carpet Extractor Machine User Manual 



Polivac Predator MK II
Carpet Extractor Machine



Operations Manual & Trouble Shooting Guide



This is an introduction on the use of the Polivac Predator MK II Carpet Extraction unit.

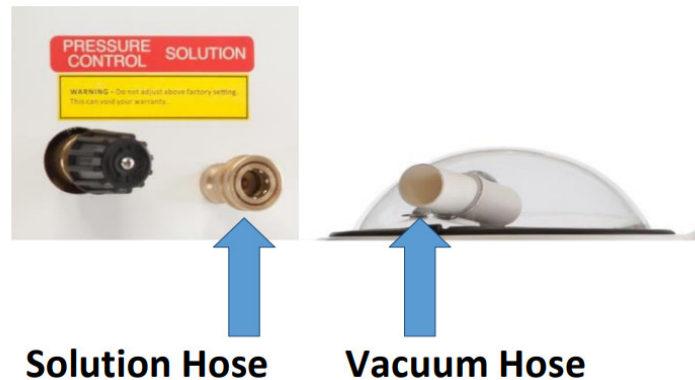
Directions for Use (Please refer to picture as well in next page)

1. Connect 240v extension cable from power source to #1 (Figure 3) power socket on unit.
2. Now connect the Male end of the solution hose to the Female solution outlet on the front of the unit (FIGURE 1).
3. Connect the Female solution end to the Male fitting on the trigger of the steam cleaning wand (FIGURE 2).
4. Ensure dump valve and booster inlet are closed if these are not in use.
5. Fill the machine with either cold or hot water. We always recommend pre-spraying the carpet rather than the use of Chemical solutions and powders run through the machine, for a number of reasons, 1 this gives better results as the chemical has had time to “work” on the carpets, 2 st nd when you extract with fresh water, you remove more chemical residue which prevents re-soiling and chemical build-up. Finally, it extends the life of your pump, the use of high alkaline chemicals can cause premature failure not covered by warranty. NEVER USE FLAMMABLE LIQUIDS OR SOLVENTS IN THE STEAM CLEANER
6. The heater switch #2 (Figure 3) can now be selected and as power is connected the switch will light up RED and this will commence the heater working. `
7. Water is now being heated up.
8. Connect the G Vac hose to the domes nose and the other end to the wand end. (FIGURE 1, 2)
9. Change position of the rocker switch #2 (Figure 3) to “Pump” position. Then press pump “Round” #3 (Figure 3) switch and vacuum “Round” #4&5 (Figure 3) switches accordingly. switch on the dirt water pump “Round” switch at the same time (if it has an auto empty unit installed).
10. Dirt water will steadily suck into the machine with vacuum motors working. Once dirt water reaches the

optimum level in the recovery tank, the whole machine will stop. This optimum level is controlled by a float switch installed in the recovery tank.

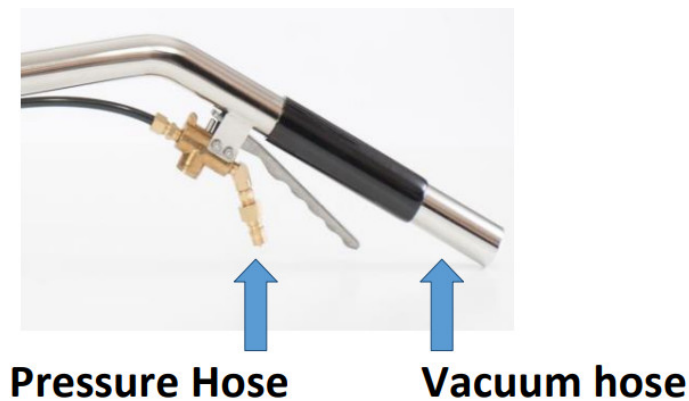
11. The customer should push all round buttons to the off position and should empty the dirt water tank before bringing the machine back to operations.
12. No need to follow step # 10 for auto carpet extractor, as these varieties will automatically empty the recovery tank using the auto empty pump installed in the machine.
13. MK2 & MK3 Auto has a monel screen installed in the recovery tank in order to stop finer dirt from going in the auto empty pump. It is important to clean this model screen regularly to turn the auto empty function efficiently.

FIGURE 1



- Connect the supplied hoses to the above-pictured connection. To connect the solution hose, push the sleeve back on the brass socket insert the male plug then release.
- To connect the vacuum hose just insert the black hose cuff into the plastic pipe.

FIGURE 2



- Connect the female solution hose fitting to the male wand connector and slide the cuff over the end of the wand.
- You may need to replace the trigger kit.



PPR180A



PPR178A



PPR179

Contents

- 1 Predator MKII Side Control Panel
- 2 Predator MKII Pressure Control
- 3 Predator MKII Dump Valve
- 4 Predator MKII Booster inlet
- 5 General Maintenance & Troubleshooting Guide
- Maintenance
- 6 Troubleshooting Fault Remedy
- 7 PREDATOR MKII CABINET ASSEMBLY
- 8 PREDATOR MKII MOTOR – PUMP – FRAME ASSEMBLY
- 9 PREDATOR MKII UNDERCARRIAGE ASSEMBLY
- 10 WARRANTY POLICY
- 11 Documents / Resources
 - 11.1 References
- 12 Related Posts

Predator MKII Side Control Panel

1. 240-Volt 10 AMP power inlet socket.
2. Pump or heater selector switch.
3. Water pump power switch.
4. Vac motor #4 power switch.
5. Vac motor #5 power switch.
6. Machines operating hour timer.
7. Thermal pump overload reset switch.

Figure #3



Predator MKII Pressure Control



Figure 4

1. Pressure increase/decrease regulator knob.
2. Solution Outlet (for connection to a high-pressure hose).
3. Pressure Gauge.
4. Dump Valve.

Predator MKII Dump Valve



- To release captured wastewater lift handle as shown in the diagram.
- Water will drain & then depress the handle down to reseal.

Predator MKII Booster inlet

- **Figure 5** shows the booster inlet in the closed position
- **Figure 6** shows the inlet opened to connect the vac hose and booster box.
- The inlet opens by hand only and will close itself after use.



FIGURE #5



FIGURE #6

- A standard wand only requires 350 to 400 psi, any more may result in unnecessary damage to the wand and trigger system.
- It is recommended that the upholstery tool or stair tool pressure is 150 psi.
- To measure the pressure, engage the trigger on your device then adjust accordingly using the pressure control knob.



General Maintenance & Troubleshooting Guide

Maintenance

The key to keeping the unit in good working order is general maintenance.

Follow the below procedure for the best result with the unit.

- Must Empty dirt water and clean water from tanks after each use.

1. Water filter

- Clean Monel screen and filter basket

2. Lint deflector

- Clean the filter screen if any dirt is stuck there as it will affect suction power

3. Oil level

- Check the oil level of the predator pump. If less, then please fill to half level. Oil of the pump need to be changed every 500 hours for the predator

4. Floor tool

- Remove built-up Lint from the opening of the wand.
- Please change jets of the wands when required (when tips of the jets worn-out pressure would drop, and user will notice an unusual spray of solution).

5. Vac motors

- No maintenance can be done but use Antifoam to prevent chemicals and water from entering motors and causing faults.

Troubleshooting Fault Remedy

1. No Power to the unit

- Check power cable and power from a source
- Check the water in the front tank. If full, then the machine stops completely

2. Heater not working

- Check pump/heater switch is switched to the heater and not pump
- Check the water in the front tank. If full, then the machine stops completely

3. Pump not working

- Check pump/heater switch is switched to pump and not heater check thermal reset button and depress to engage.

- Check the water in the back tank. If water is less than the float switch level, then the pump does not work

4. No water coming from the floor tool

- pump is running
- Check water level is enough
- Check floor tool jets for blockage
- Check water tanks filter for blockage
- Check hose connection of the solution hose

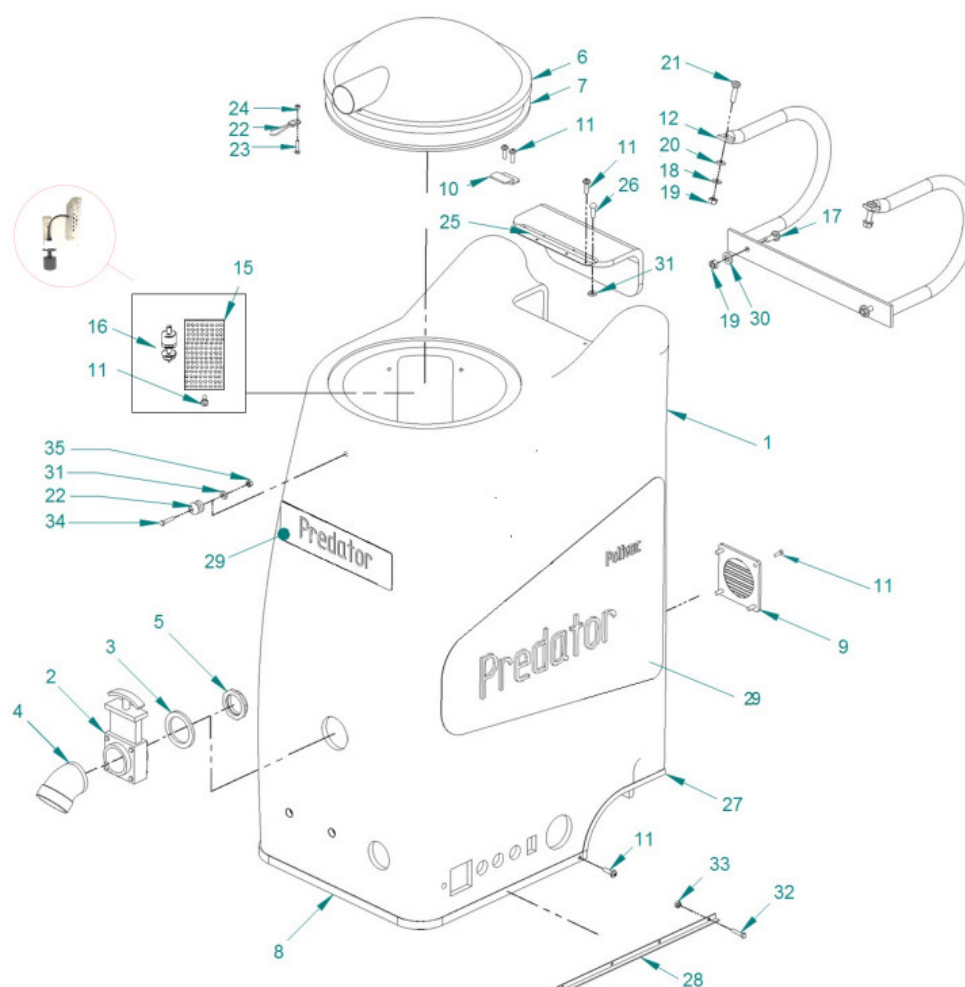
5. Vac motors not working

- Check both switches are on Glowing Red
- Check the water in the front tank. If full, then the machine stops completely

6. Vac motors is working but less suction

- Check dome lid is on correctly and sealing Ensure waste dump valve is complete shut
- Ensure booster box is complete shut (figure # 5)

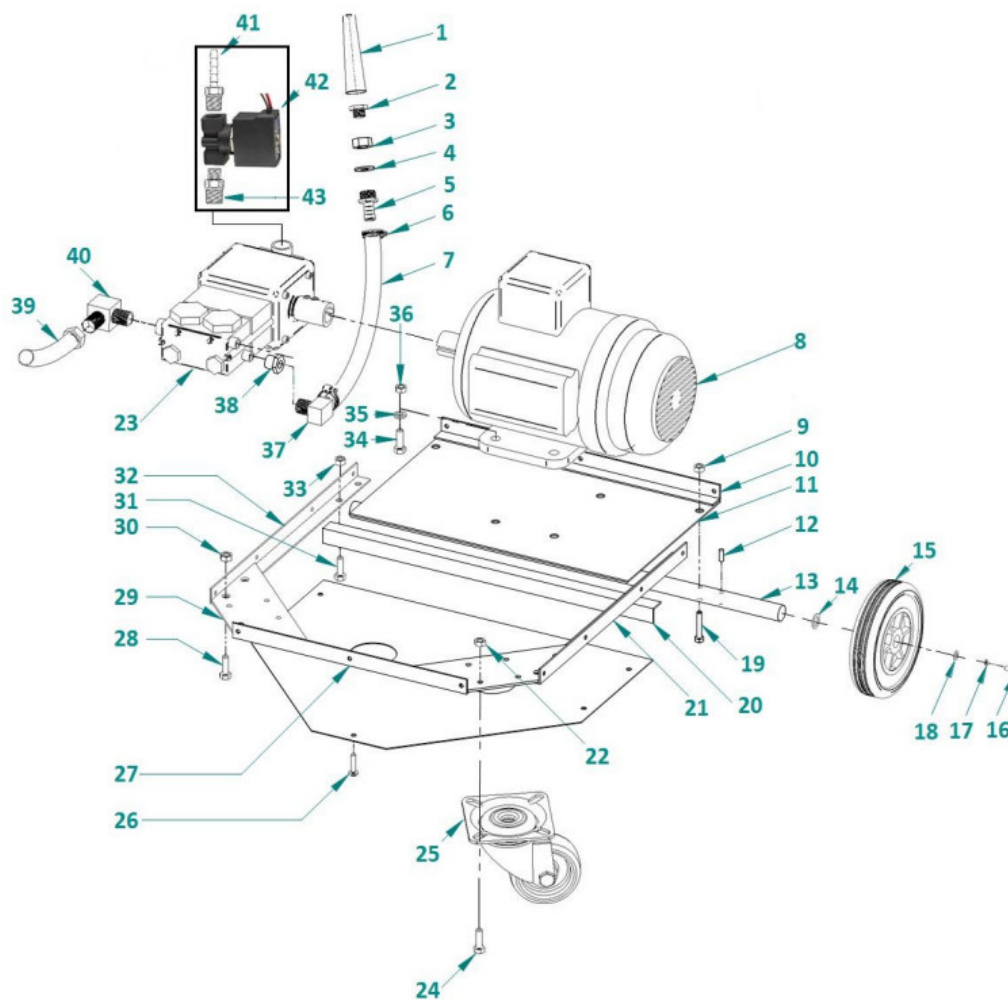
PREDATOR MKII CABINET ASSEMBLY



No	Code	Description
1	PPR001	Cabinet

2	PPR028	Dump Valve
3	PPR030	Gasket
4	PPR029	Dump Valve Spout
5	PPR031	Nut
6	PPR027	Dome
7	PPR047	Rubber Seal
8	PPR002	Continental Trim
9	PPR049	Vent Grill White
10	PPR114	Dome Latch
11	PPR252	Screw
12	PPR014	Handle Assembly
13	PPR013	Filter Screen
14	PPR144	Float Switch
15	PPR177	Screw
16	PPR104	Washer
17	PPR096	Nut
18	VLB608	Rubber Washer
19	PPR103	M8 x 30 mm
20	PPR135	Loop
21	AAA500	Screw
22	PVS037	Nut
23	PVT018	Piano Hinge
24	AAK838	Rivet
25	PPR003	Pinch Weld
26	PPR005A	Switch Guard Alloy
27	PPR245	PredatorMKII Label
28	PPR128	Washer
29	PVT025	Washer
30	PPR090	Bolt
31	AAA354	M6 Nyloc
32	PPR212	Screw
33	PPR095	M4 NYLOC

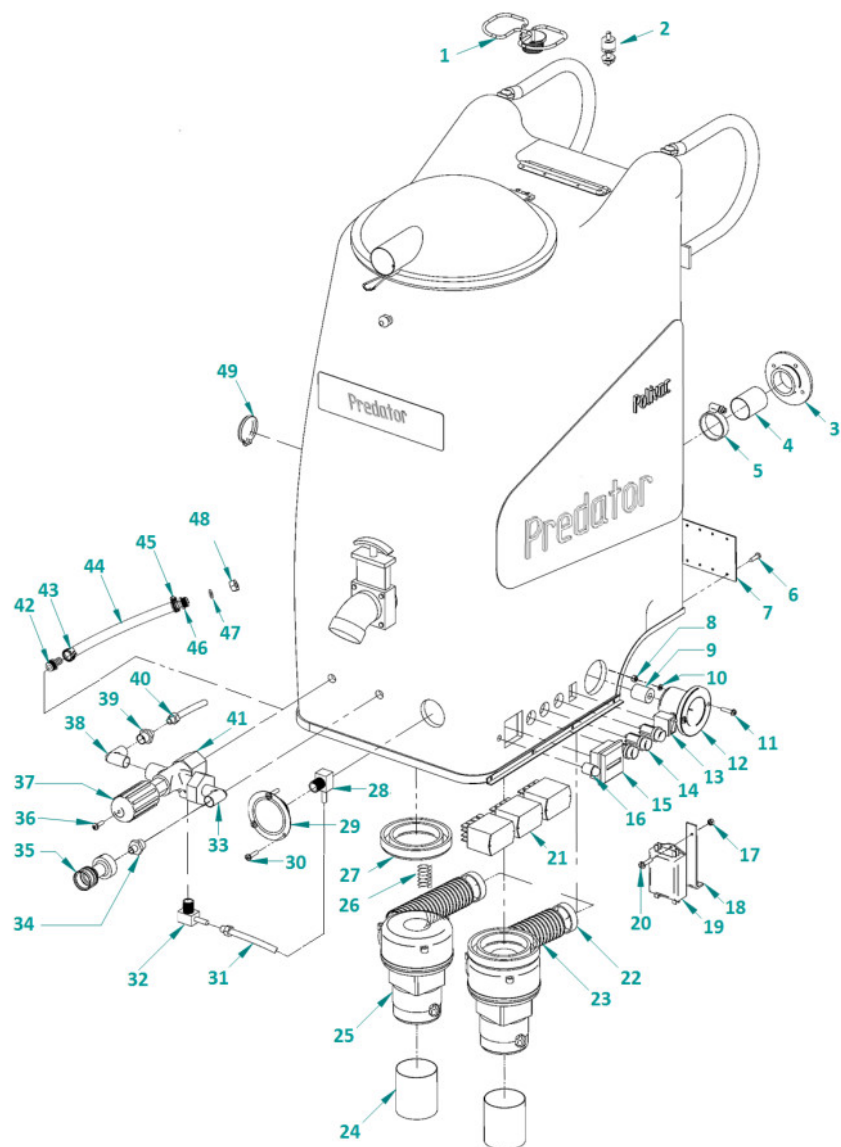
PREDATOR MKII MOTOR – PUMP – FRAME ASSEMBLY



No	Code	Description
1	PPR032	Monel Screen
2	PPR059	Reducer
3	PPR054	Nut
4	AAG470	Washer 1/2"x1" Zinc
5	PPR051	Brass Barb
6	PPR042	Clamp
7	PPR039	Hose
8	PPR017	Drive Motor
9	AAA354	Nut
10	PPR007	Rear Frame
11	PPR008	Motor Plate
12	PPR102	Split Pin
13	PPR011A	Long Axle-585mm

14	AAG480	Washer
15	PPR015	Tyre 250×4
16	GAS049	5/16"x3/4" Set Screw
17	GAS045	Spring Washer
18	PPR128	Washer
19	PPR093	Bolt
20	PPR010	Cross Bar
21	PPR005	Side Frame
22	AAA354	Nut
23	PPR018	Pump
24	PPR090	Bolt
25	PPR016	Castor Wheel W/Break
26	PVT029	Screw
27	PPR006	Front Frame
28	PPR090	Bolt
29	PPR009	Wheel Plate
30	AAA354	Nut
31	PPR090	Bolt
32	PPR005	Side Frame
33	AAA354	Nut
34	SK006	Bolt
35	AAG365	Washer
36	SLB043	Nut
37	PPR053	Brass Elbow
38	PPR058	Reducing Plug
39	PPR038	Hose Tail Female
40	PPR256	Brass Elbow
41	PPR051	Brass Barb 3/8 X 1/4
42	PPR257	Solenoid
43	PPR065	Reducer 3/8 X 1/4

PREDATOR MKII UNDERCARRIAGE ASSEMBLY



No	Code	Description
1	PPR025	Heater Element
2	PPR144	Float Switch
3	PPR044	Muffler End Cap
4	PM037	50mm Vac Pipe
5	PPR043	Hose Clamp 40-55
6	AAK838	Pop Rivet
7	PPR004	Kick Plate
8	PPR095	NYLOC Nut
9	PPR138	Round Ferrite
10	PVT025	Stainless Washer
11	PPR098	Pan Phillips

12	PPR048	Inlet Socket
13	PPR130	Rocker Switch
14	PPR022	Round Switch
15	PPR023	Hour Meter
16	PPR124A	Therm. OverloadM06
17	PPR095	NYLOC Nut
18	PVS424A	Base Brace
19	PPR134	RFI Filter
20	BV018	Screw
21	PPR129	Relay 240V
22	PPR043	Hose Clamp 40-55
23	PPR040	Silver Flexi Hose
24	PPR046	75mm Muffler Pipe
25	PM005	3 Stage Vac Motor
26	PPR184	VacMotor Mount Spring
27	COM086	Rubber Seal
28	PPR236	Brass Elbow
29	PPR020	Pressure Gauge
30	PVT029	S/S Self Tap Screw
31	PPR235	Gauge to Unloader Hose
32	PPR237	Brass Elbow
33	PPR061	Brass Elbow
34	SK0065	Brass Reducer
35	PPR080	Brass Connector
36	PPR252	Screw
37	PPR248	Knob Unloader
38	PPR060	Brass Elbow
39	PPR058	Brass Reducer
40	PPR037	Hose End
41	PPR021	Unloader
42	PPR052	Brass Barb
43	PPR042	Hose Clamp 13-20
44	PPR039	Red Hose 3/8"

45	PPR042	Hose Clamp 13-20
46	PPR051	Brass Barb
47	AAG470	Washer
48	PPR054	Nut
49	PPR133	Inlet Booster Box

WARRANTY POLICY

- When a warranty repair is requested, the purchaser must first contact any of Polivac's authorized Service Centres with proof of purchase and details of the alleged defect. In most instances, the request for warranty brought to the attention of our Service Centres or Agents is handled in a prompt routine manner with no question as to its validity. However, some requests for a warranty are not justified. In these cases, product owners will be made aware that the premature failure of their product was the result of a cause not covered by Warranty.
- The Polivac warranty covers only DEFECTIVE MATERIAL and/or DEFECTIVE WORKMANSHIP. It does not cover labor.
- Polivac products are warranted for twelve (12) months from the date of purchase by the original purchaser against faulty workmanship or material. The warranty covers only the replacement, repair, or adjustment of any part which in the opinion of Polivac fails because of a fault in materials or workmanship:
 - drive motors to carry one (1) year warranty
 - bodies of carpet extraction products and vacuum cleaners carry a three (3) years conditional warranty.
 - battery warranty of twelve (12) months is as provided by the manufacturer. Terms available on request.
- Where the product has been rented out by a Hire or similar company, the warranty period is reduced to three (3) months.
- This warranty does not cover service calls, traveling time, or consumable parts – e.g. drive belts, chains, flexible skirts or hoses, dust bags, mains lead, brushes, buffers, buffer strips, sanding discs, light bulbs, nozzles, filters, pressure pumps, piston seals, diaphragms, squeegees and like items.
- In the case of proprietary components used by the manufacturer in the product, such as engines, electrical motors, chargers, and the like, Polivac will pass on any warranty provided by the manufacture of such items.
- Accidental damage, abuse, misuse, or neglect of the product is not covered by warranty.
- Fair wear and tear and where the product has been used other than for the purpose for which it was designed are not covered by warranty.
- The use of non-approved chemicals and detergents in the product will void the warranty.
- Products that have been modified are not covered by warranty.
- Products that have not been serviced at their recommended intervals by an authorized Polivac Service Centre or Agent are not covered by warranty
- Damage to, or failure of, the product which has resulted from low or high voltage, the use of an incorrectly sized extension lead, or a coiled electrical extension lead is not covered by warranty.
- Repairs carried out on the product by any person other than an authorized Polivac repairer will void the warranty. All freight charges to and from the manufacturer, agent or service center will be the responsibility of the distributor.
- A charge for traveling time and labor will be applicable for on-site warranty service. 16. Polivac reserves the

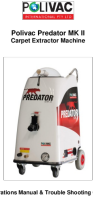
right to replace defective parts of the product with parts or components of similar quality, grade, and composition where an identical part or component is not available. Goods presented for repair may be replaced by refurbished goods of the same type rather than being repaired.

POLIVAC WARRANTY IS SUBJECT TO THE LAWS AND REGULATIONS OF THE INDIVIDUAL STATES AND COMMONWEALTH TERRITORIES OF AUSTRALIA. THIS WARRANTY IS NOT TRANSFERRABLE.

<https://polivac.com.au/supports/warranty-information/>

Polivac International Standard Warranty Terms (v2) pg. 1

Documents / Resources

	<p>POLIVAC Predator MK II Carpet Extractor Machine [pdf] User Manual Predator MK II, Carpet Extractor Machine, Predator MK II Carpet Extractor Machine</p>
---	--

References

- [POLIVAC Warranty Information - Polivac International](#)