

POLARIS
Reverse
Camera Plug



Polaris Reverse Camera Plug Instructions

[Home](#) » [Polaris](#) » Polaris Reverse Camera Plug Instructions 

Contents

- [1 Polaris Reverse Camera Plug](#)
- [2 Specifications](#)
- [3 1-2 x AHD Cameras \(30Hz 1080P\)](#)
- [4 3 – 4 AHD Cameras \(30Hz 1080P\)](#)
- [5 Retaining Factory Camera \(CVBS NTSC\)](#)
- [6 FAQs](#)
- [7 Documents / Resources](#)
 - [7.1 References](#)

POLARIS

Polaris Reverse Camera Plug



Your unit has three separate camera fly leads. The camera plug you use depends on your camera format, and you will need to adjust settings on the head unit accordingly. To access these settings, go into Settings > Reverse

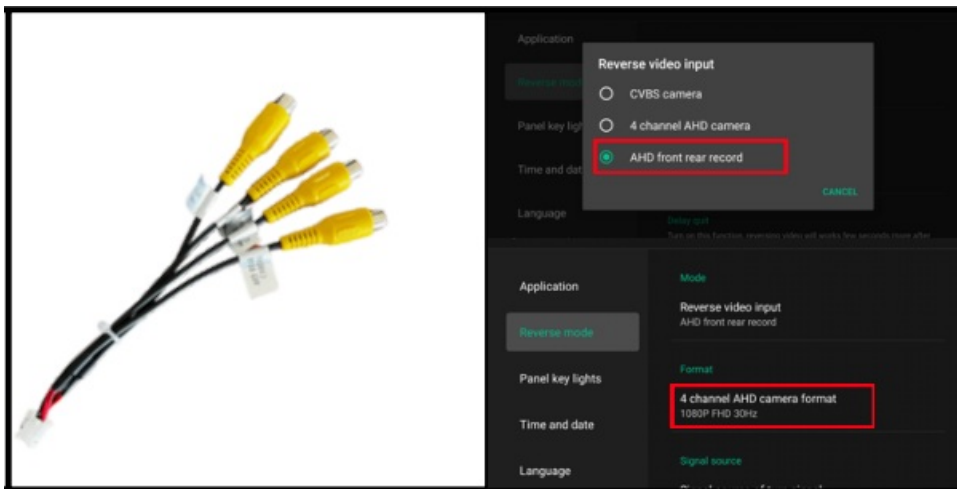
Mode.

Specifications

- Camera Formats: AHD, CVBS
- Resolution: 1080P
- Camera Inputs: AHD Rear, AHD Front, Left & Right Camera
- Power Requirement: ACC 12Volt+

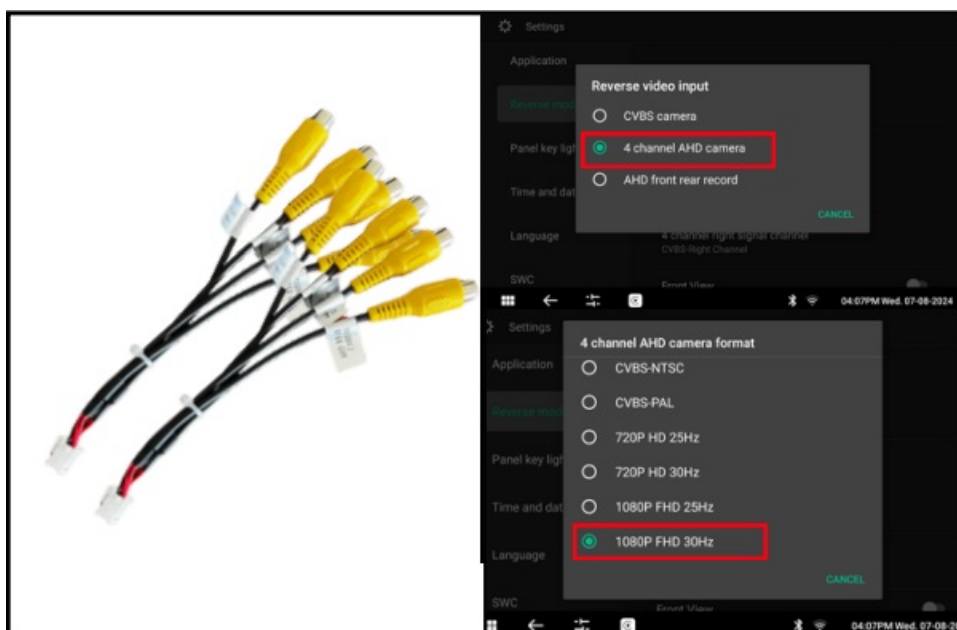
1-2 x AHD Cameras (30Hz 1080P)

- Connect the reverse camera to the AHD
- REAR CAMERA input on the fly lead.
- Connect the 2nd camera to the AHD FRONT CAMERA input on the fly lead.

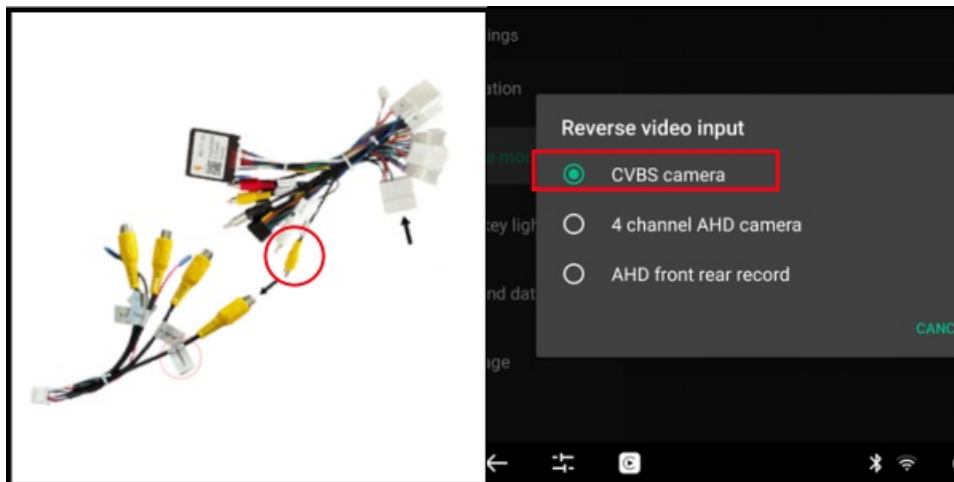


3 – 4 AHD Cameras (30Hz 1080P)

- Connect the reverse camera to the AHD REAR CAMERA input on the fly lead.
- Connect the 2nd camera to the AHD FRONT CAMERA input on the fly lead.
- Connect your other cameras to the LEFT & RIGHT CAMERA inputs on the fly lead.

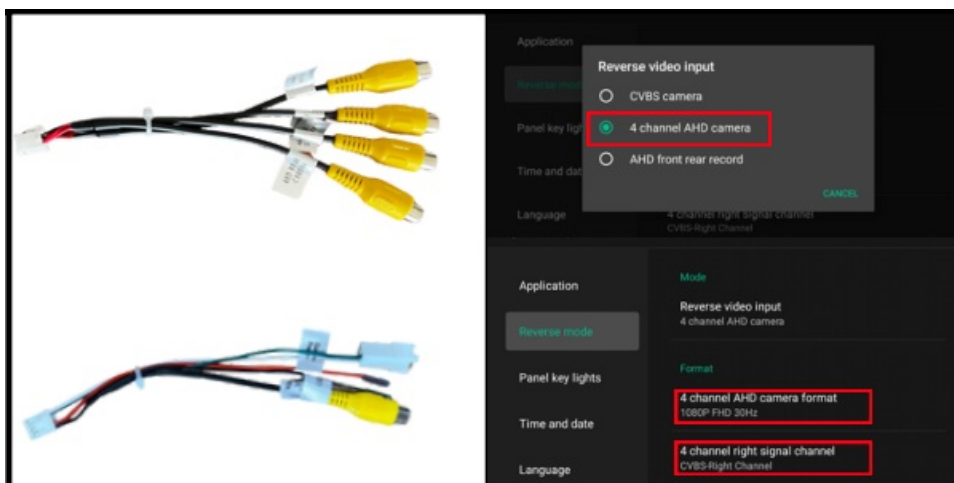


Retaining Factory Camera (CVBS NTSC)



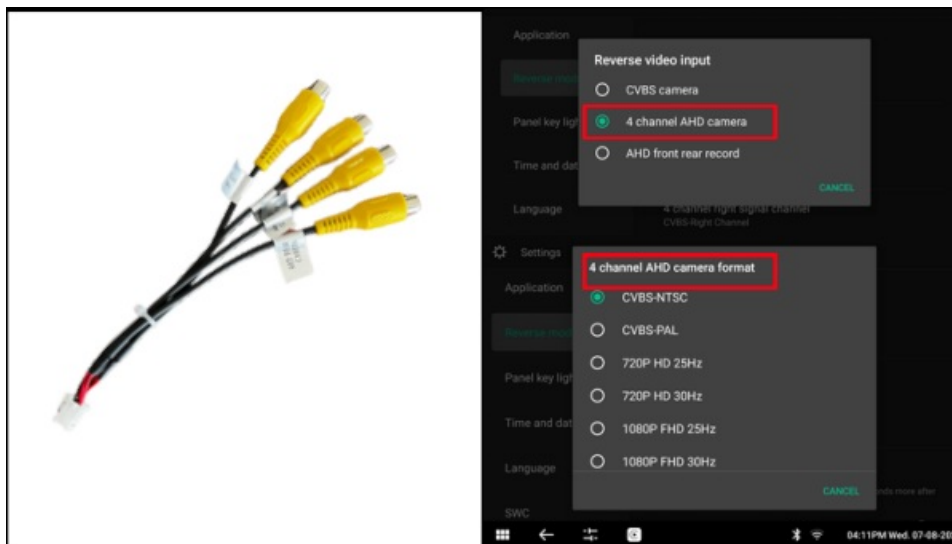
- Connect the factory camera plug into the
- Polaris Main Harness.
- Plug the CAMERA RCA from the Polaris main harness into the CAMERA Input on the fly lead.

AHD Reverse Camera (30Hz 1080P) + CVBS Caravan camera (NTSC)



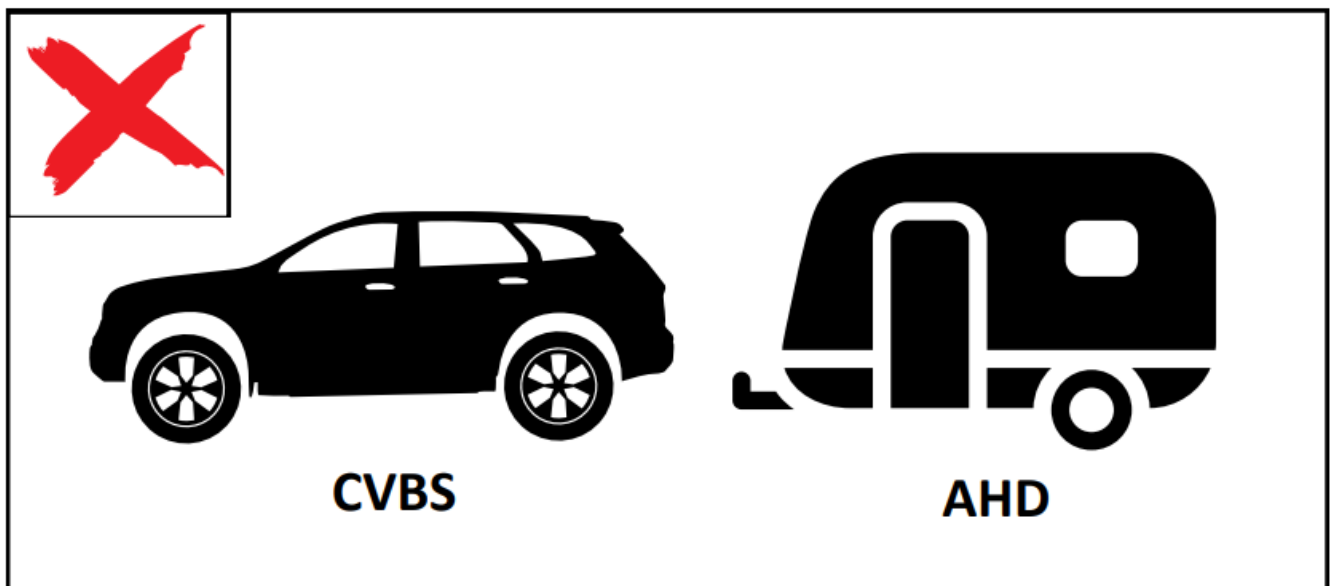
- Connect your reverse camera to the AHD REAR CAMERA input on the fly lead.
- Connect the CVBS caravan camera to the FRONT CAMERA input on the fly lead.

Using Two CVBS Cameras (NTSC)



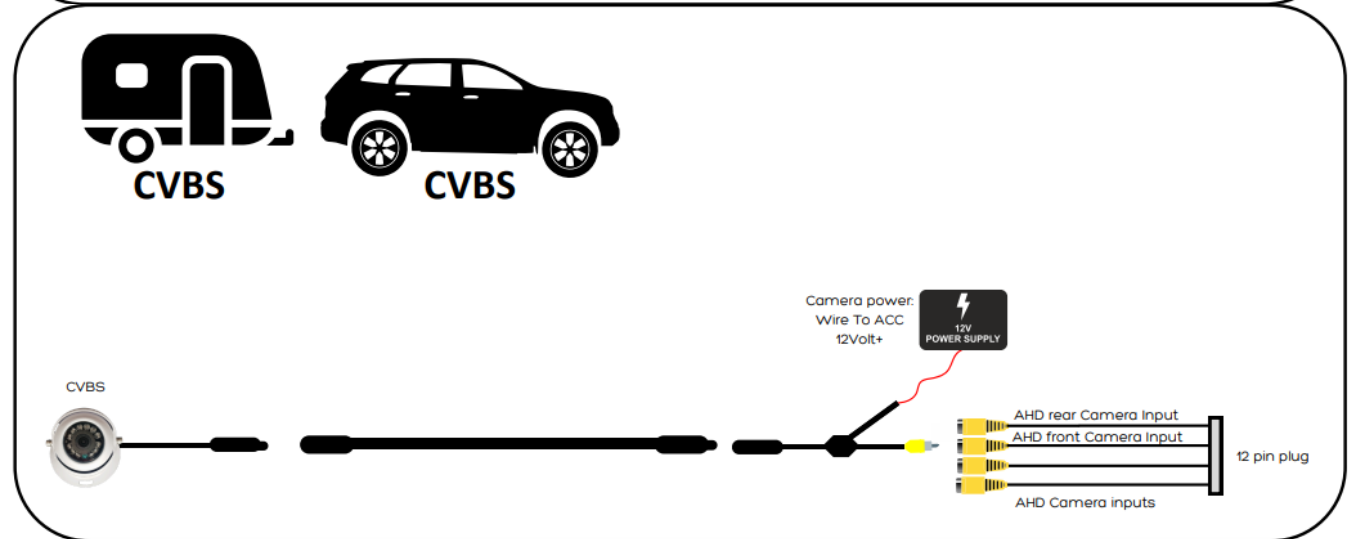
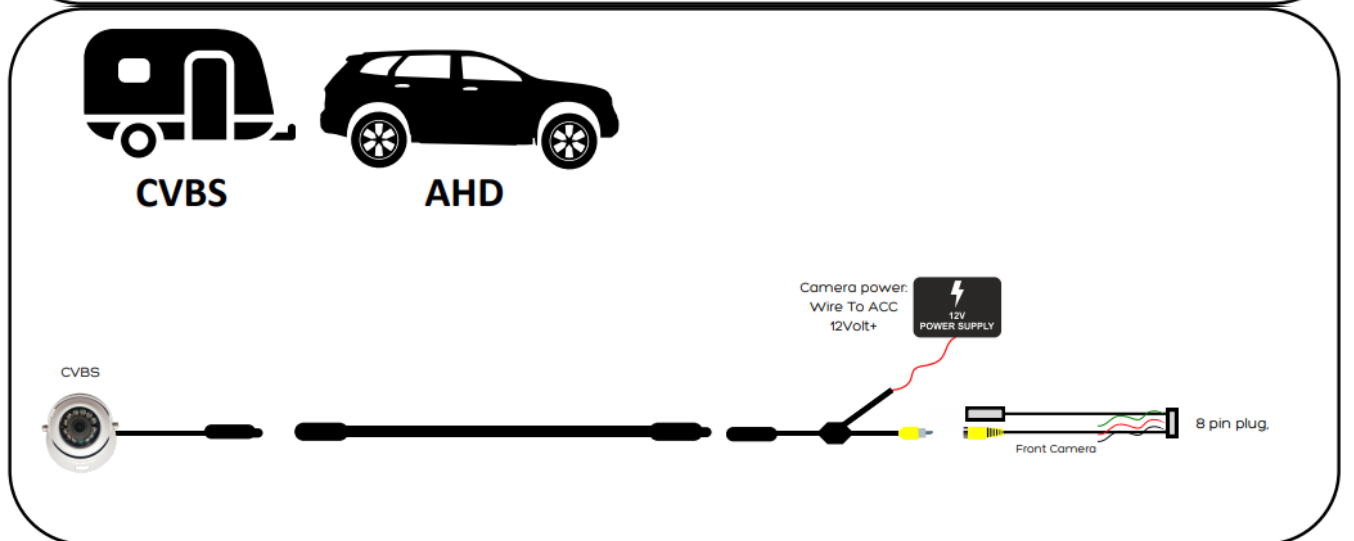
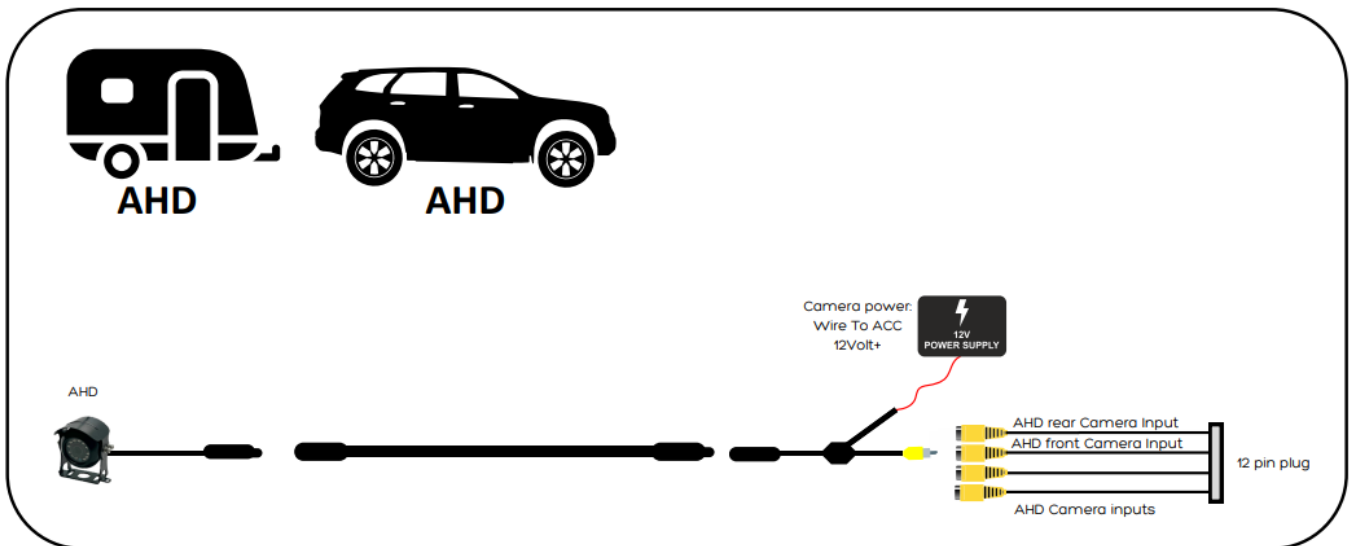
- Connect your CVBS
- Reverse the Camera to the AHD REAR CAMERA input on the Fly Lead.
- Connect your second CVBS camera to the AHD FRONT CAMERA input on the fly lead.

You CAN NOT use a CVBS camera as a reverse camera while using an AHD camera as a second camera. The second camera must also be CVBS. Alternatively, both cameras can also be AHD.



Adding a caravan camera (or a second camera)

Please refer to pages 19 to 20 to ensure the cameras are plugged into the Correct plug & changed to the correct settings depending on the camera setup.

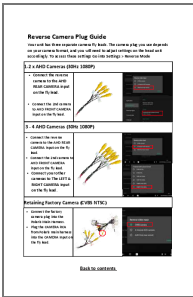


FAQs

Q: Can I use a CVBS camera as a reverse camera with an AHD camera a second camera?

A: No, you cannot use a CVBS camera as a reverse camera while using an AHD camera as a second camera. The second camera must also be CVBS, or both cameras can be AHD.

Documents / Resources



[Polaris Reverse Camera Plug](#) [pdf] Instructions
DAGNCO14xSA, BAFGz6hPf0A, Reverse Camera Plug, Reverse Camera, Camera Plug

References

- [User Manual](#)

[Manuals+](#), [Privacy Policy](#)

This website is an independent publication and is neither affiliated with nor endorsed by any of the trademark owners. The "Bluetooth®" word mark and logos are registered trademarks owned by Bluetooth SIG, Inc. The "Wi-Fi®" word mark and logos are registered trademarks owned by the Wi-Fi Alliance. Any use of these marks on this website does not imply any affiliation with or endorsement.