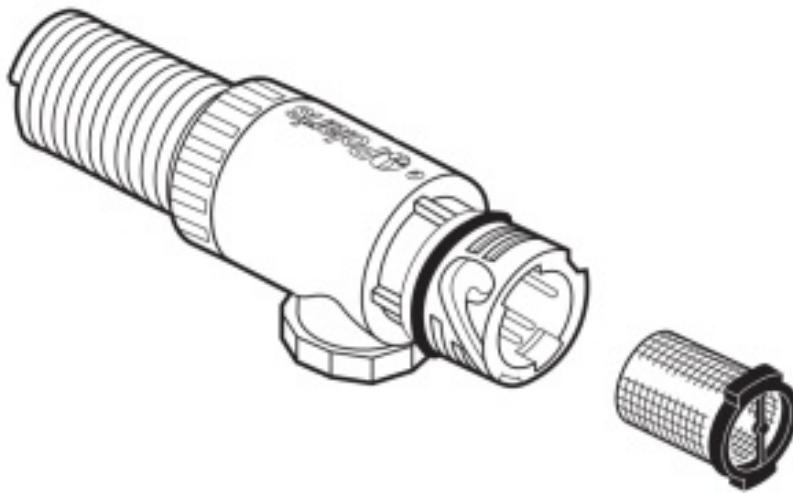


Polaris 65/165/Turbo Turtle User Guide

[Home](#) » [Polaris](#) » Polaris 65/165/Turbo Turtle User Guide

Polaris 65/165/Turbo Turtle



Contents [[hide](#)]

- 1 Quick Start Guide
- 2 Polaris 65/165/Turbo Turtle Complete Cleaner
- 3 Install to dedicated pool cleaner return line
- 4 Adjust sweep hose to fit pool length
- 5 Adjust float hose to fit pool length
- 6 Fine Tuning
- 7 Routine Maintenance
- 8 Clean
- 9 Register Product
- 10 Documents / Resources
 - 10.1 References
- 11 Related Posts

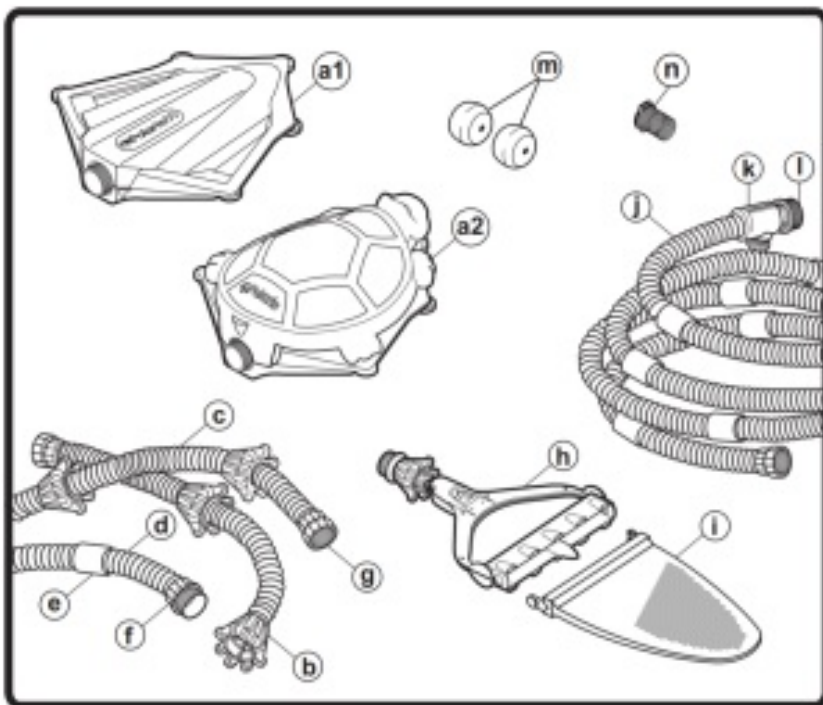
Quick Start Guide



CAUTION: USE OF POLARIS 65/165/Turtle IN A VINYL LINER POOL

Certain vinyl liner patterns are particularly susceptible to rapid surface wear or pattern removal caused by objects coming into contact with the vinyl surface, including pool brushes, pool toys, floats, fountains, chlorine dispensers, and automatic pool cleaners. Some vinyl liner patterns can be seriously scratched or abraded simply by rubbing the surface with a pool brush. Ink from the pattern can also rub off during the installation process or when it comes into contact with objects in the pool. Zodiac Pool Systems LLC and its affiliates and subsidiaries are not responsible for, and the Limited Warranty does not cover, pattern removal, abrasion or markings on vinyl liners.

Polaris 65/165/Turbo Turtle Complete Cleaner

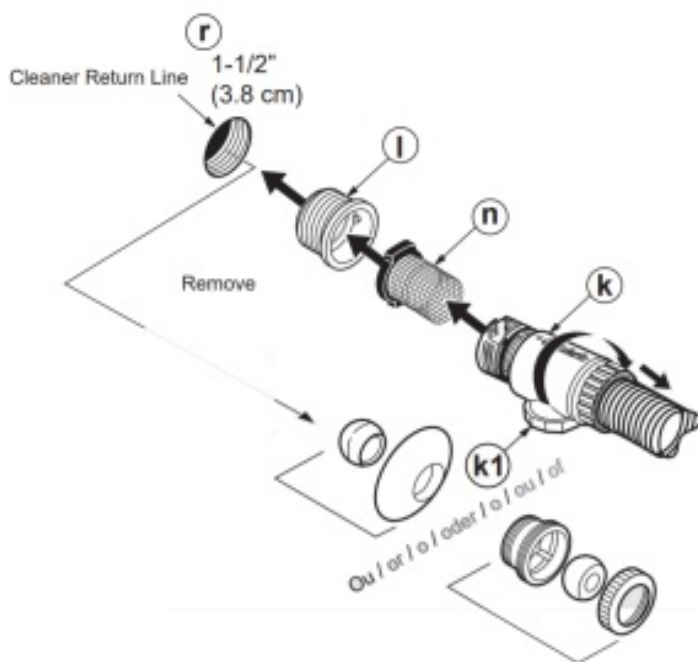


- a1. Surface Module
- a2. Turtle Top
- b. Wheel Cage
- c. Sweep Hose
- d. Float Hose Extension with Connector (165 only)

- e. Float
- f. Hose Connector, Male
- g. Hose Connector, Female
- h. Jet Sweep Assembly
- i. All-Purpose Bag
- j. Float Hose
- k. Quick Disconnect with pressure relief valve (k1)
- l. Universal Wall Fitting (UWF®/QD)
- m. Eyeball Regulators (2) (165 only)
- n. Filter Screen (UWF/QD)

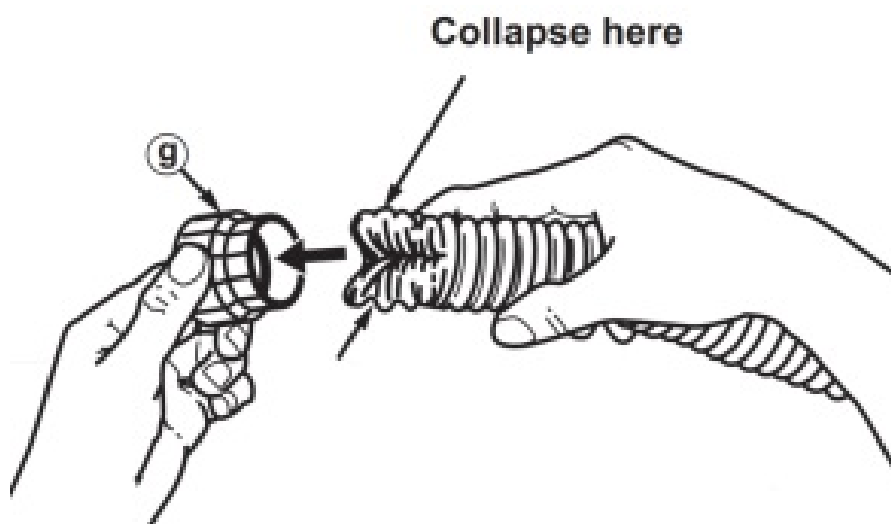
Install to dedicated pool cleaner return line

- a. Turn on filtration pump and flush out plumbing line. Turn pump off.
- b. Screw the Eyeball Regulators (m), if necessary, and UWF (l) into the return line opening.
- c. Turn the Quick Disconnect (k) clockwise into the UWF and pull away to secure.

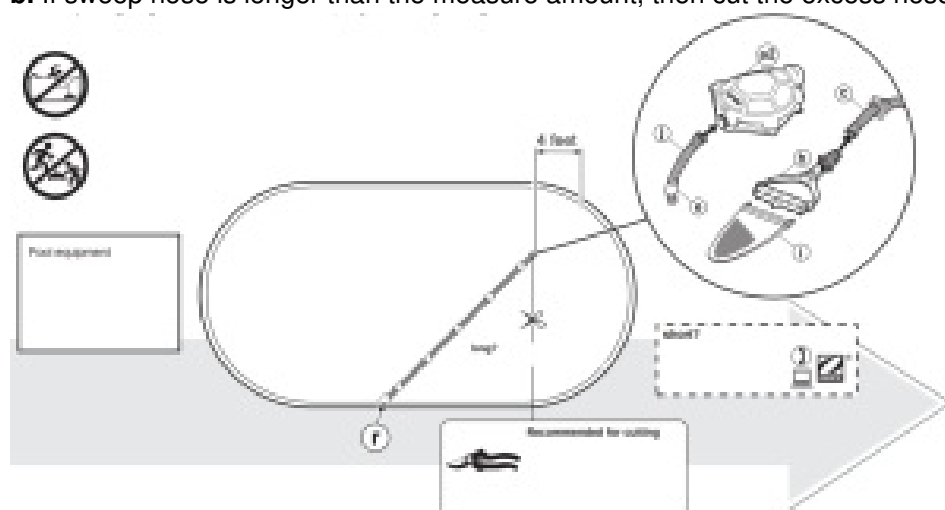


Adjust sweep hose to fit pool length

- a. Measure deepest part of pool. Add 2' (60 cm) to this measurement to determine the correct length of sweep hose.



b. If sweep hose is longer than the measure amount, then cut the excess hose.



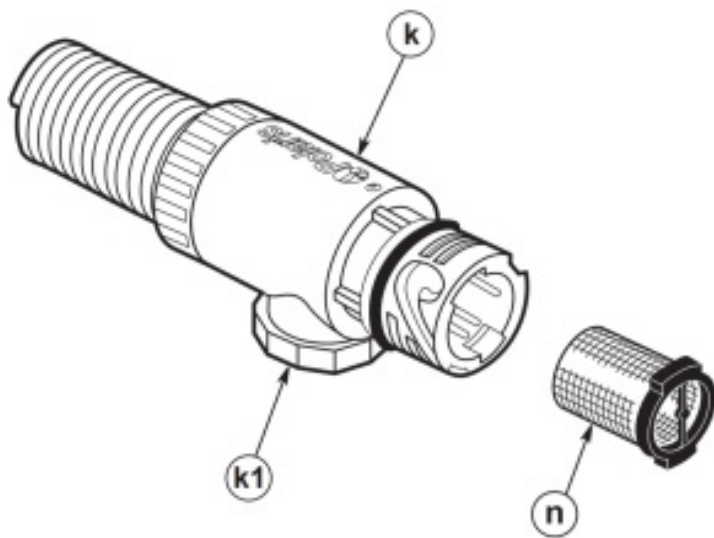
Adjust float hose to fit pool length

- Measure to farthest part of pool. The end of the hose should be 4 feet (1.2 cm) shorter than this point.
- Assemble as shown.

Fine Tuning

> **Pressure Relief Valve (k1)**

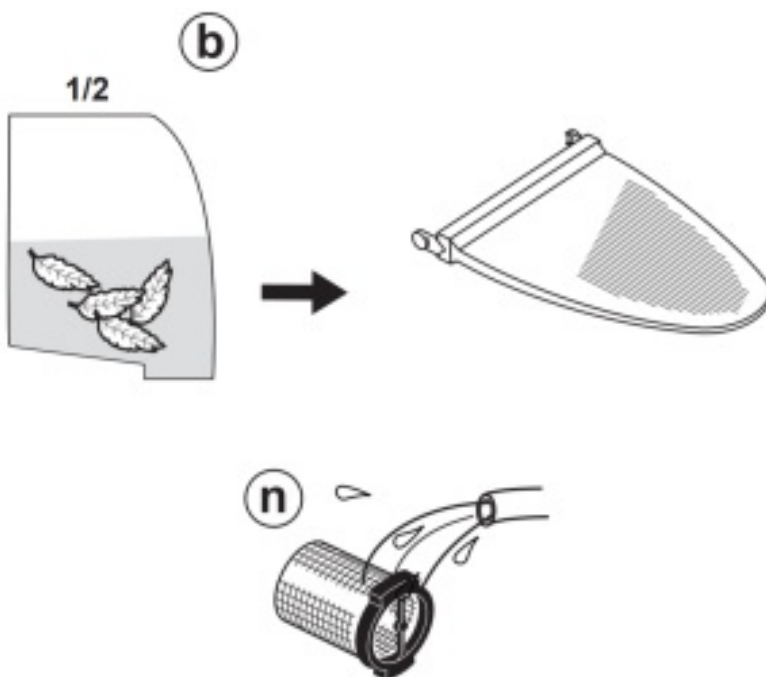
Unscrew to decrease water flow to cleaner



Routine Maintenance

Clean

Bag Filter Screen



Register Product





This manual contains essential installation and startup instructions. Read the online manual and all safety warnings before commencing installation. Visit www.zodiac.com for additional operating and troubleshooting instructions.

Zodiac Pool Systems LLC
2882 Whiptail Loop # 100, Carlsbad, CA
92010
1.800.822.7933 | PolarisPool.com

ZPCE
ZA de la Balme – BP 42
31450 BELBERAUD
FRANCE | zodiac.com

©2021 Zodiac Pool Systems LLC

All rights reserved. Zodiac® is a registered trademark of Zodiac International, S.A.S.U. used under license. All other trademarks referenced herein are the property of their respective owners.



Documents / Resources



[Polaris Polaris 65/165/Turbo Turtle](#) [pdf] User Guide
Polaris, 65, 165, Turbo Turtle

References

- [Home | Polaris Pool](#)
- [Home | Fluidra USA](#)
- [Home | Fluidra USA](#)