



Polaris POL-5-03, POL-5-04 Xpedition Backup Beeper Kit Installation Guide

[Home](#) » [Polaris](#) » Polaris POL-5-03, POL-5-04 Xpedition Backup Beeper Kit Installation Guide 



Polaris Xpedition Backup Beeper Kit Installation Manual

Contents

- [1 POL-5-03, POL-5-04 Xpedition Backup Beeper Kit](#)
- [2 Step 1: Remove Seat, Hood, and Grill](#)
- [3 Step 2: Remove Optional Plastics](#)
- [4 Step 3: Install Controller, Relay, and Fuse](#)
- [5 Step 4: Remove Side Plastic](#)
- [6 Step 5: Mount Backup Beeper](#)
- [7 Step 6: Run Wire To Backup Beeper](#)
- [8 Documents / Resources](#)
 - [8.1 References](#)

POL-5-03, POL-5-04 Xpedition Backup Beeper Kit



Included:

Description	Quantity
Wiring harness	1
Relay	1
Backup Beeper	1
Zip Ties	6
Christmas Tree Zip Ties	3

Required Tools:

Torx Bit Set
Metric Wrench Set
Flat Screwdriver (push rivets)
Wire Cutter (trimming zip ties)
Philips Screwdriver
Utility Knife

Disclaimer: Sam's Backup Lights is not responsible for any damage due to improper installation.
Read entire manual before beginning the installation process.

Step 1: Remove Seat, Hood, and Grill

1. Remove two screws from the front of the driver's seat and tilt seat backward to remove; this will make installation easier.
2. Loosen grill by turning the locks one-quarter turn.
3. Lift to remove grill.
4. Remove hood straps and lift to remove hood.

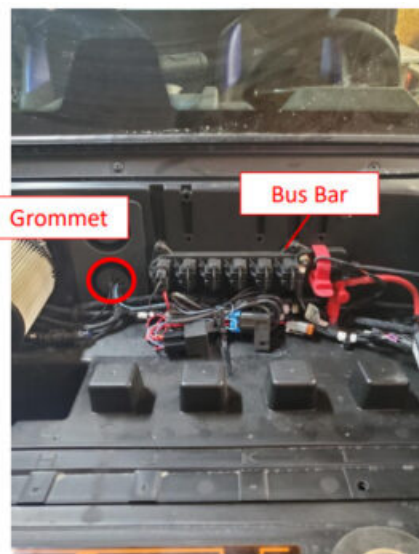


Step 2: Remove Optional Plastics

1. If applicable, remove any plastics under dash to access the diagnostic connector and OEM wiring harness.

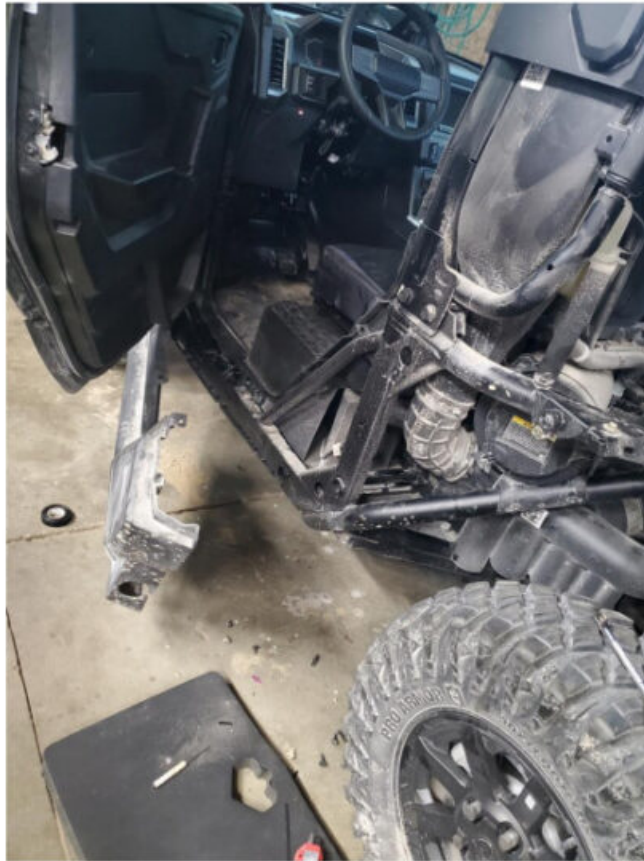
Step 3: Install Controller, Relay, and Fuse

1. Plug supplied diagnostic connector into mini-controller and factory diagnostic connector. Located under the dash on the drivers-side under the steering wheel
2. Zip tie to OEM wiring harness.
3. Using the factory holes, zip tie relay, fuse, and related wires using supplied Christmas tree zip ties.
4. Plug bus bar connector on harness into bus bar.
5. Feed the Light Blue wire thru the grommet to underside of dash and connect into the mini-controller



Step 4: Remove Side Plastic

1. Remove the screws and push rivets holding the side plastics on.



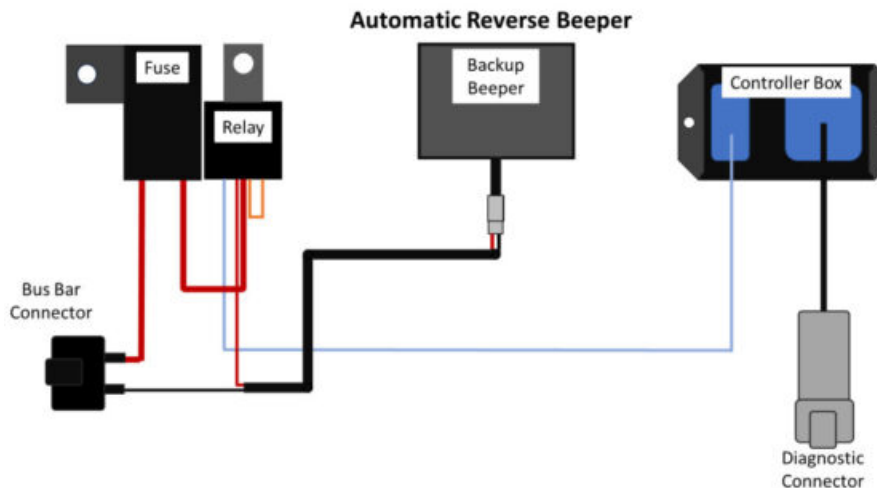
Step 5: Mount Backup Beeper

1. Attach the Backup Beeper.
2. Depending on model and options mounting location will change.



Step 6: Run Wire To Backup Beeper

1. Run harness from battery to the Backup Beeper.
2. Follow the factory wiring harness and secure the light wiring keeping away from heat and moving parts.



Note: If the ignition is turned off while the vehicle is in reverse, or the manual override function is enabled the lights will remain ON until the ECU enters sleep mode (approximately 30 secs to 2 minutes depending on vehicle and ECU type).

Sam's Backup Lights www.samsbackuplights.com

POL-5-03

POL-5-04

Polaris Xpedition Backup Beeper

support@samsbackuplights.com

Documents / Resources

[Polaris POL-5-03, POL-5-04 Xpedition Backup Beeper Kit](#) [pdf] Installation Guide

POL-5-03, POL-5-04, POL-5-03 POL-5-04 Xpedition Backup Beeper Kit, POL-5-03 POL-5-04, Xp edition Backup Beeper Kit, Backup Beeper Kit, Beeper Kit, Kit

References

- [User Manual](#)

[Manuals+](#), [Privacy Policy](#)

This website is an independent publication and is neither affiliated with nor endorsed by any of the trademark owners. The "Bluetooth®" word mark and logos are registered trademarks owned by Bluetooth SIG, Inc. The "Wi-Fi®" word mark and logos are registered trademarks owned by the Wi-Fi Alliance. Any use of these marks on this website does not imply any affiliation with or endorsement.