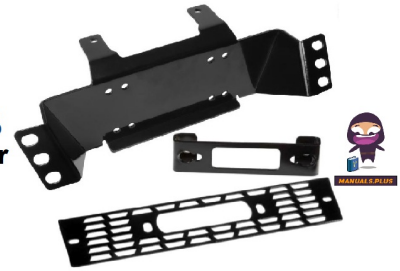


**POLARIS**  
**HK-056 Ranger**  
**Winch Mount**



## HK-056 Polaris Ranger Winch Mount Installation Guide

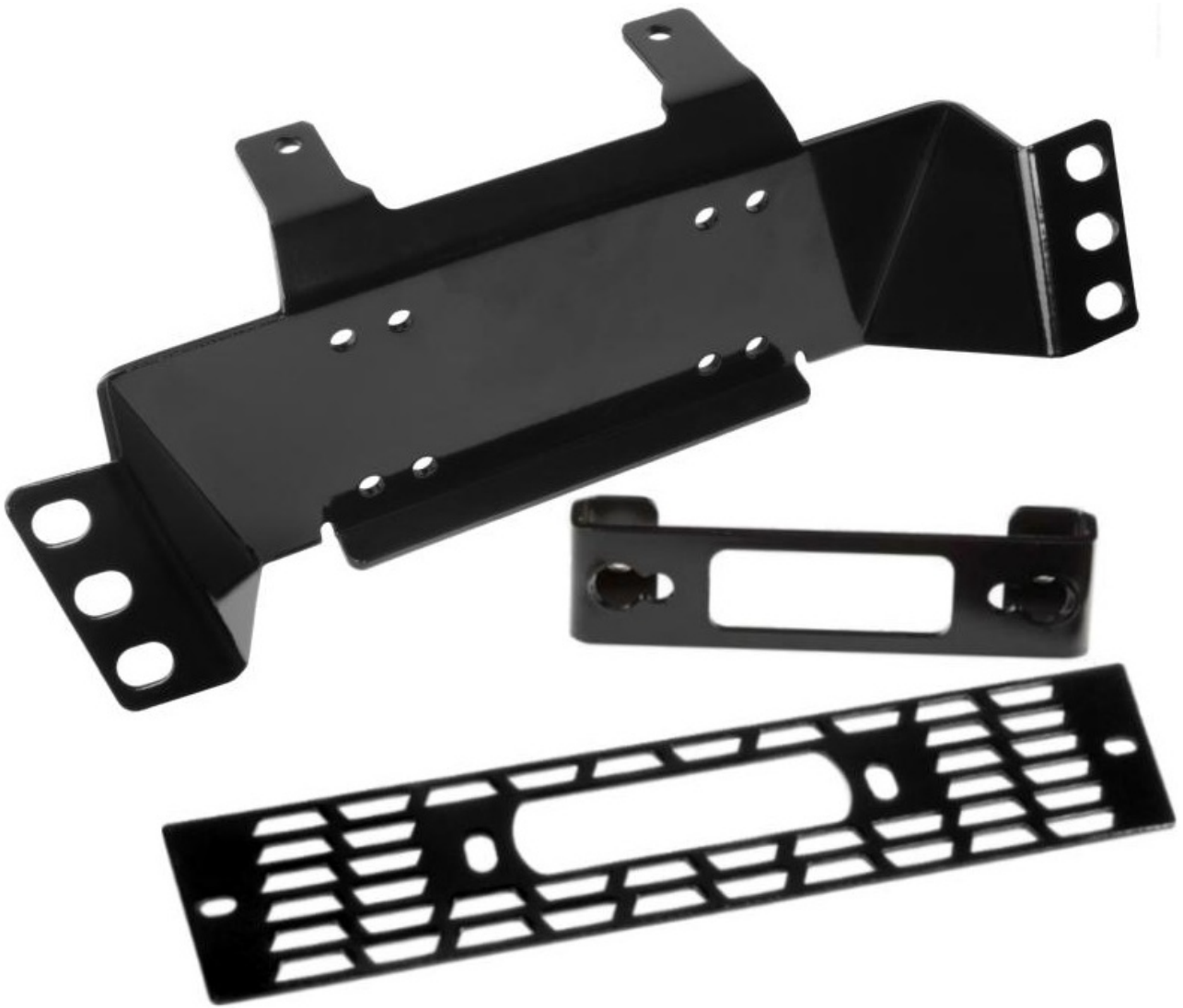
[Home](#) » [Polaris](#) » HK-056 Polaris Ranger Winch Mount Installation Guide 

### Contents

- [1 HK-056 Polaris Ranger Winch Mount](#)
- [2 Product Specifications](#)
- [3 Product Usage Instructions](#)
- [4 FAQ](#)
- [5 Kit Components](#)
- [6 INSTALLATION INSTRUCTIONS](#)
- [7 Documents / Resources](#)
  - [7.1 References](#)
- [8 Related Posts](#)

**POLARIS**

**HK-056 Polaris Ranger Winch Mount**



## Product Specifications

- **Product Name:** Polaris Ranger Winch Mount
- **Part Number:** 101560 REV C
- **Hardware Kit:** HK-056, HK-031

## Product Usage Instructions

### Prepare Machine:

- Begin by turning off the vehicle and disconnecting the battery cables. Locate the battery compartment and remove the ground, then positive terminal.

### Install Contactor:

- Locate the passenger side area under the hood compartment for full-size Rangers and mid-size Rangers.
- Use screws included with the winch kit to fasten the contactor. Note that the plastic will create threads when bolts are threaded in.

### Install Switch:

- Use the Mini-Rocker Switch Hardware Kit (HK-031) to mount a handlebar switch on the dash or desired location.
  - Remove handlebar mount hardware from the switch.
  - Locate the mounting location.
  - Mark and drill 2 switch holes through the dash using the switch housing as a template.
  - Drill a 3rd hole for switch wiring.
  - Assemble as per Figure 3 in the manual.

#### **Remove Bumper:**

- Remove Torx screws from front and upper grills on the bumper frame. Remove bolts at the bottom of the frame and detach the entire bumper from the machine.

#### **Assemble Winch Mount to Bumper:**

- Place the winch and mount assembly onto the bumper and attach using supplied 3/8 hardware. Do not tighten yet.

#### **Assemble Winch to Mount:**

- Attach your winch to the mount plate using the hardware provided with your winch.

#### **Note**

- Depending on your winch type, follow the specific bolt patterns provided in the manual images. Use a converter plate if required based on your winch type.

#### **FAQ**

- **Q:** Do I need to purchase a separate fairlead for installation?
  - **A:** Yes, a fairlead is not included in the kit, so you will need to purchase one separately for installation.
- **Q:** Can I mount the contactor in a different location?
  - **A:** The recommended location for mounting the contactor is provided in the manual. While it may be possible to mount it elsewhere, ensure it is securely fastened and compatible with the bolt pattern.

#### **Kit Components**

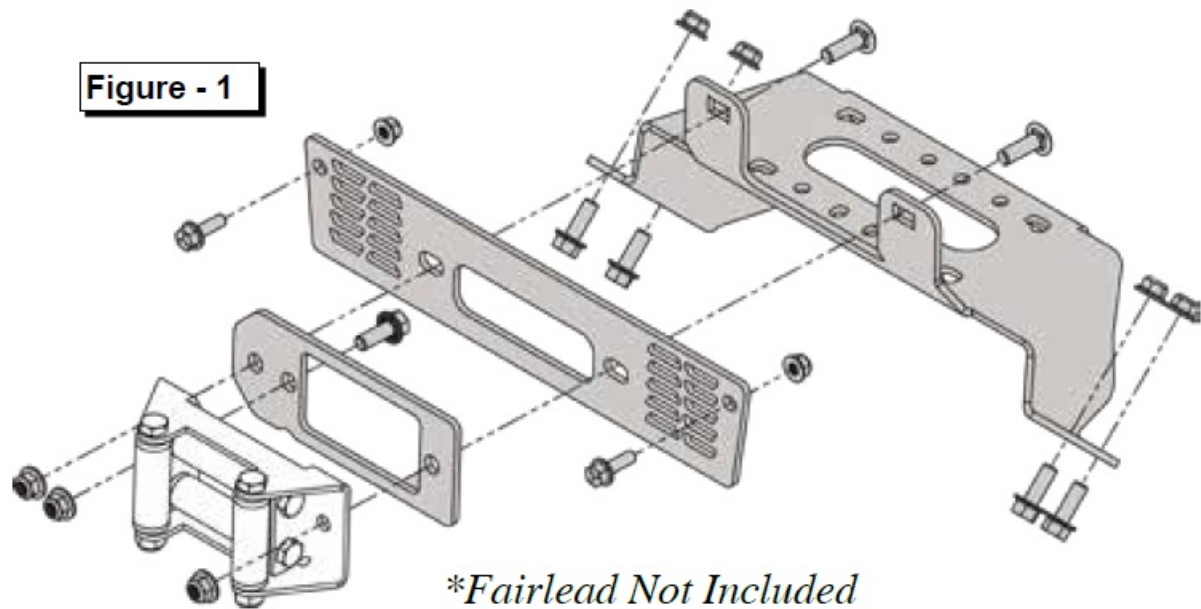
**Part #:** 101560 REV C

**Hardware Kit:** HK-056, HK-031

#### **Qty / Part Description**

- 1.....Winch Mount
- 1..... Fairlead Bracket
- 1..... Fairlead Converter Bracket

- 6..... 3/8"-16 x 1" Hex Flange Bolt
- 2..... 5/16"-18 x 1" Hex Flange Bolt
- 8..... 3/8"-16 Nylock Flange Nut
- 2..... 5/16"-18 Nylock Flange Nut
- 1..... Spade Insulated Terminal (Not Used)
- 2..... 3/8"-16 x 1.25" Short Neck Carriage Bolt
- 1..... Hardware Kit (Mini-Rocker Switch)

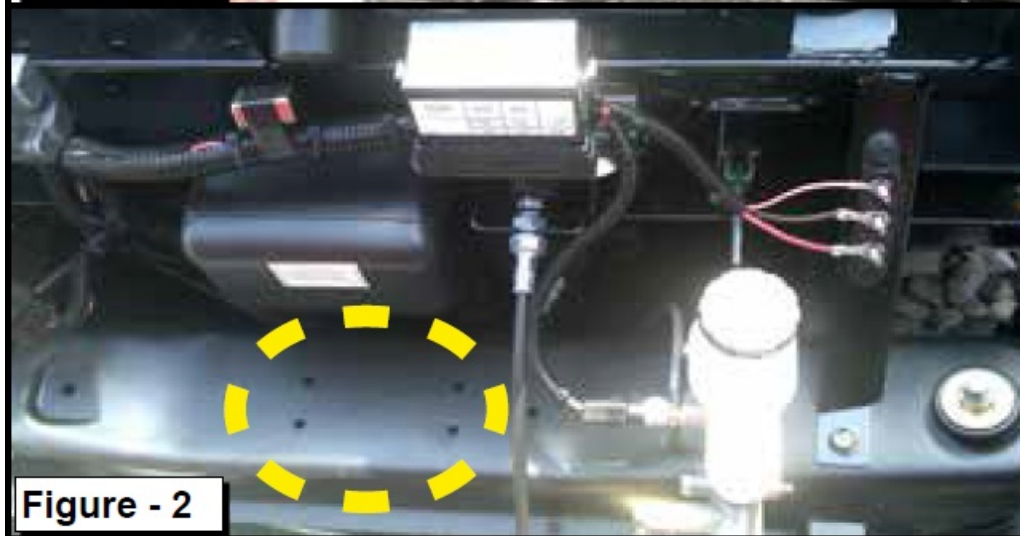


## INSTALLATION INSTRUCTIONS

### PREPARE MACHINE

1. Begin by turning the vehicle off and disconnecting the battery cables. Locate the battery compartment, usually under the hood, or on the current models under the drivers seat. Also on the crew it is under the rear driverside seat. Note: First remove the ground, then positive terminal.

### CONTACTOR

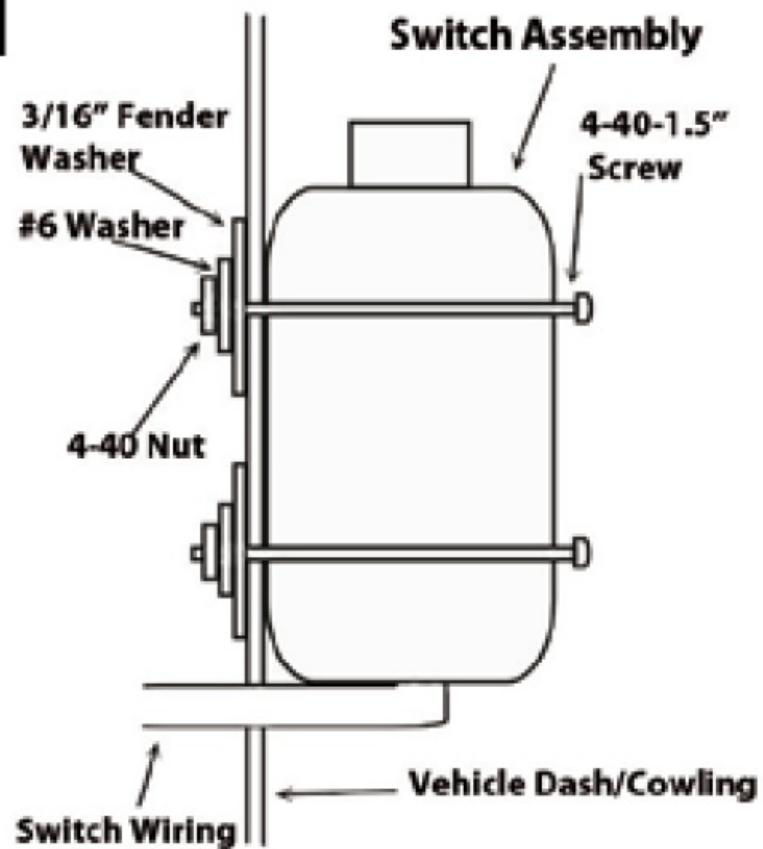


1. Find the location on the passenger side under the hood compartment. (Figure 1) for full size Rangers and (Figure2) for mid size Rangers. Fasten contactor using (4X) Screws included with winch kit. Note: This location is set up for a standard contactor and some may not work with this bolt pattern but can be mounted in the general area. Contactor bolts will create threads in plastic when threaded in. This is normal.

## SWITCH

1. Use included Mini-Rocker Switch Hardware Kit (HK-031) to fasten a handle bar mounted mini-rocker switch to the dash or any desired location.
  - Remove handlebar mount hardware from the switch
  - Locate desired mounting location
  - Mark & drill 2 switch holes thru dash using switch housing as a template
  - Drill a 3rd hole for switch wiring

**Figure - 3**



- Assemble per Figure 3

**REMOVE BUMPER**

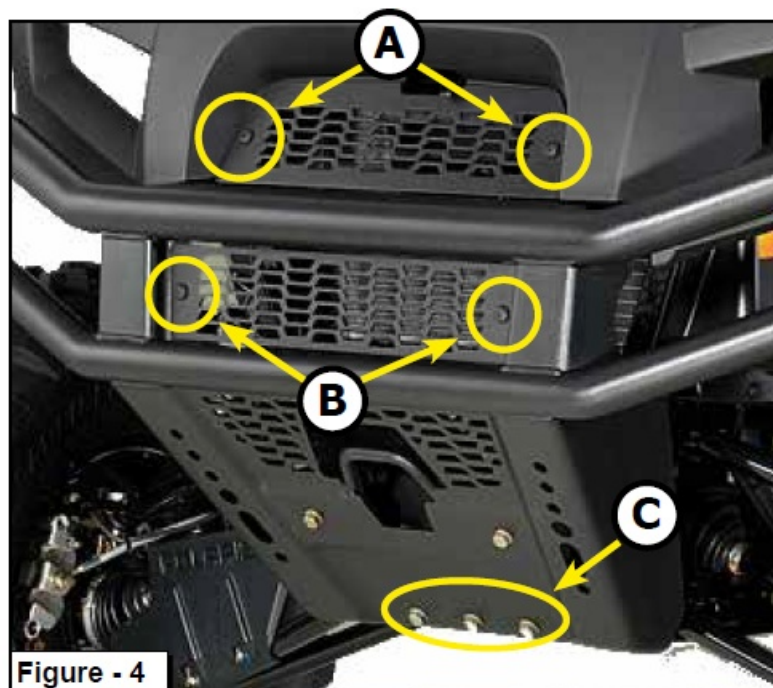


Figure - 4

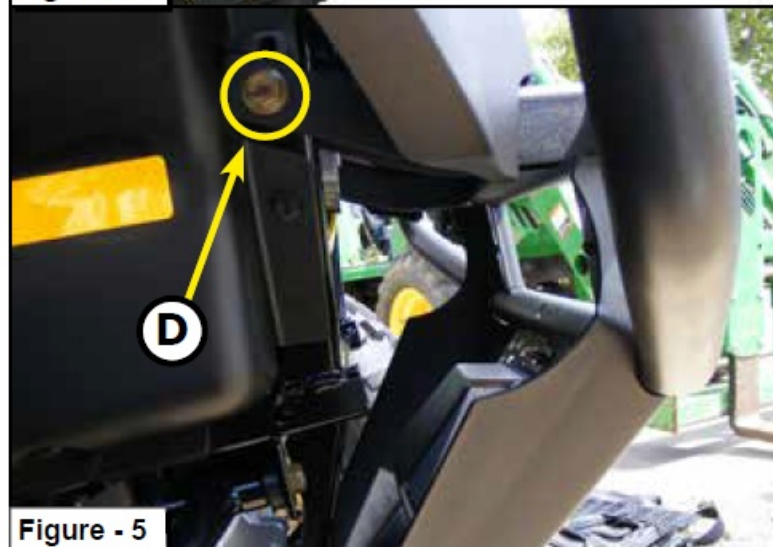


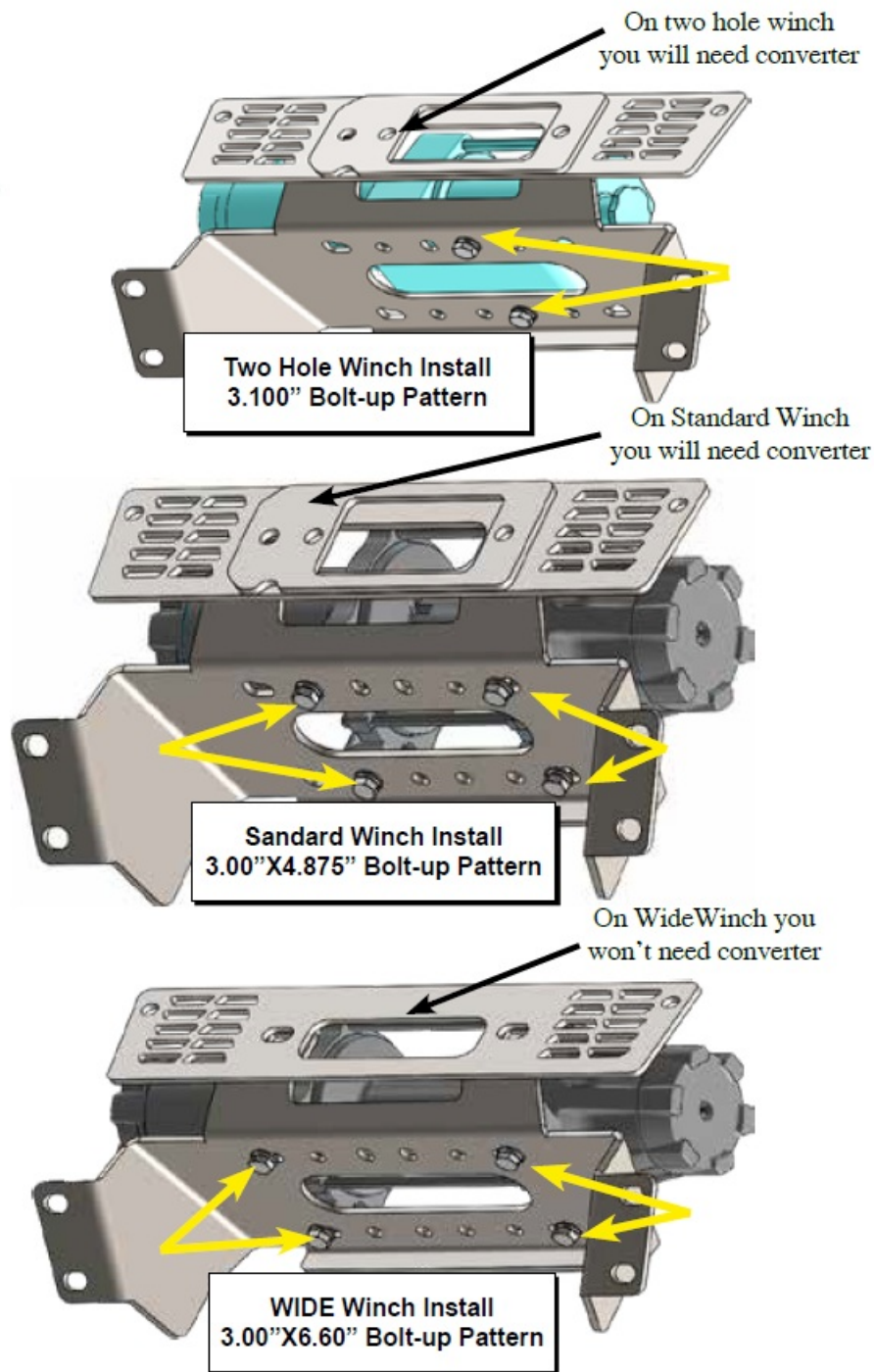
Figure - 5

1. Begin by removing the 4 Torx screws at locations (A) & (B) from the front and upper grills on the bumper frame as shown in Figure 4. Retain the upper grill (A). Discard or set aside the front grill (B). Then remove the three bolts (C) at the bottom of the frame (see Figure 4).
2. Remove 2 bolts (D) from the driver & passenger side of the bumper as shown in Figure 5. On some models there are two plastic clips you need to remove from the bumper. Finally remove the entire bumper from the machine.

#### ASSEMBLE WINCH TO MOUNT

1. Assemble your winch to the mount plate using the hardware supplied with your winch.
2. Depending on your winch there are three different bolt pattern's you will use; refer to the three patterns in the following images. If you have a two hole, or a standard winch you will need the converter plate. If you have a wide winch discard the converter plate.
3. Connect the shorter winch wires to the winch leads. (usually Black and Red) (Alternate Wiring Diagram)

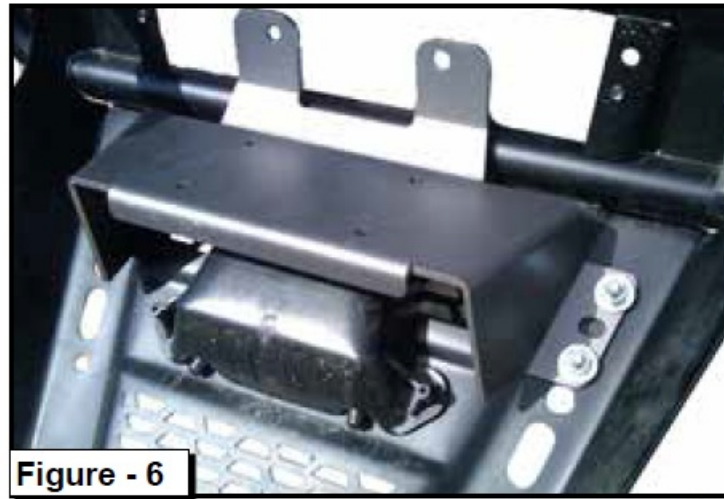




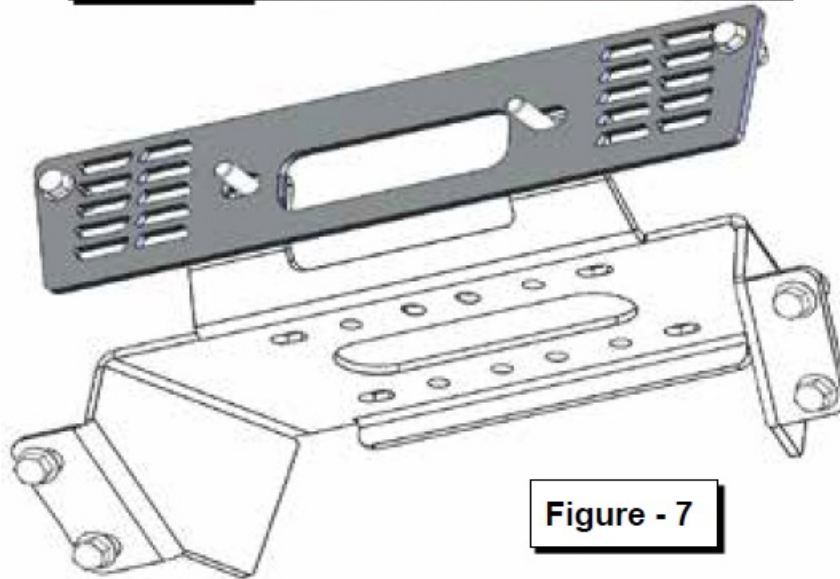
## ASSEMBLE WINCH MOUNT TO BUMPER

1. Place the winch and mount assembly into location on the bumper and attach using the supplied 3/8" hardware as shown in (Figure 6). Do not tighten. (winch not shown in picture)
2. Place the new steel replacement grill and converter plate if needed while feeding your winch cable through the fairlead opening into its location as shown above.
3. Assemble your roller fairlead by running the supplied carriage bolts through the mount, replacement grill and then the fairlead. If installing 2-HOLE or a STANDARD winch you will use one set of bolts supplied with your winch kit for the roller.





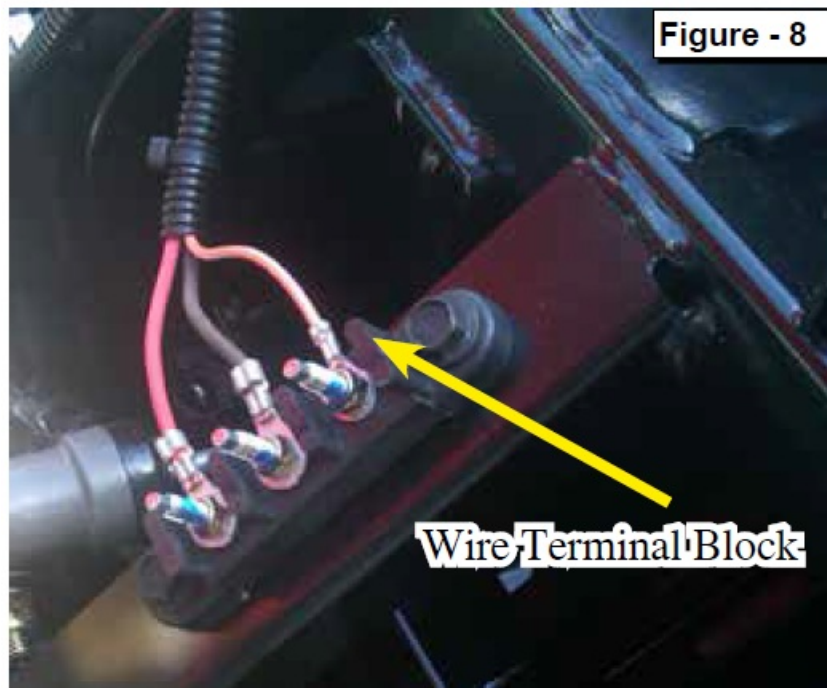
**Figure - 6**



**Figure - 7**

4. Tighten everything down evenly.
5. Reinstall bumper to your machine.
6. Replace your upper grill removed in step 4 (A)

## **WIRING INSTRUCTIONS**



1. Locate the wire terminal block under your hood. (Figure 8) Wire the red ignition wires for a mini-rocker switch or the controller to the terminal with the Orange and White wires shown in (Figure 8) using the supplied 22-18GA Spade Insulated Terminal.
2. If you have a RANGER CREW with the battery under the rear drivers side seat you will need the extended 11' cables included with our Extension Kit (KFI#: UTV-WEK, sold separately).
3. Route the longest wires (usually BLUE & YELLOW) included with your winch from the solenoid or battery to the contactor location. Connect wires to contactor according to ALTERNATE WINCH WIRING DIAGRAM shown in Figure 11, – NOT according to the color coding in your winch manual or the contactor.

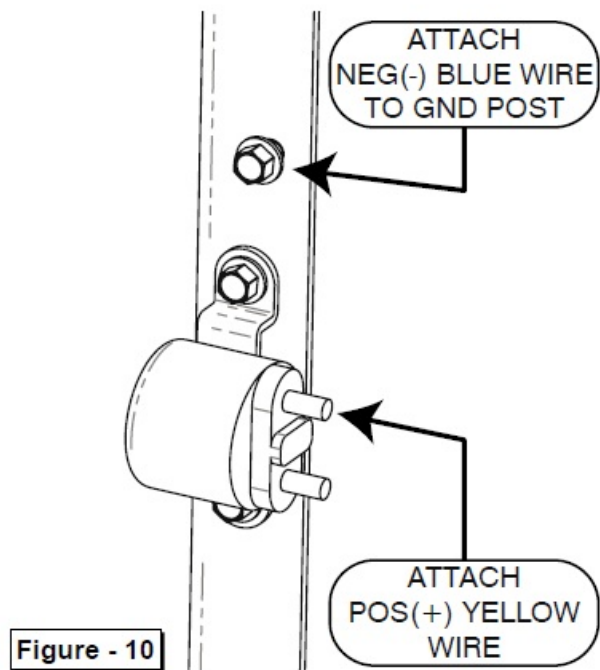
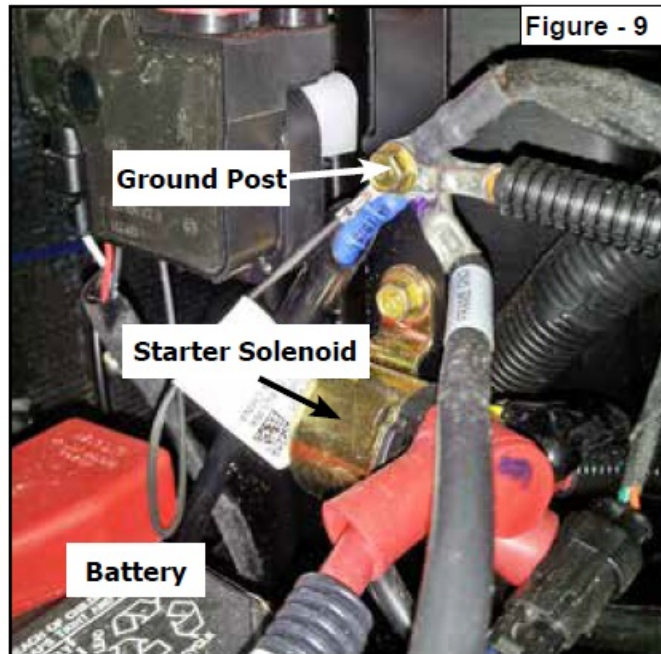
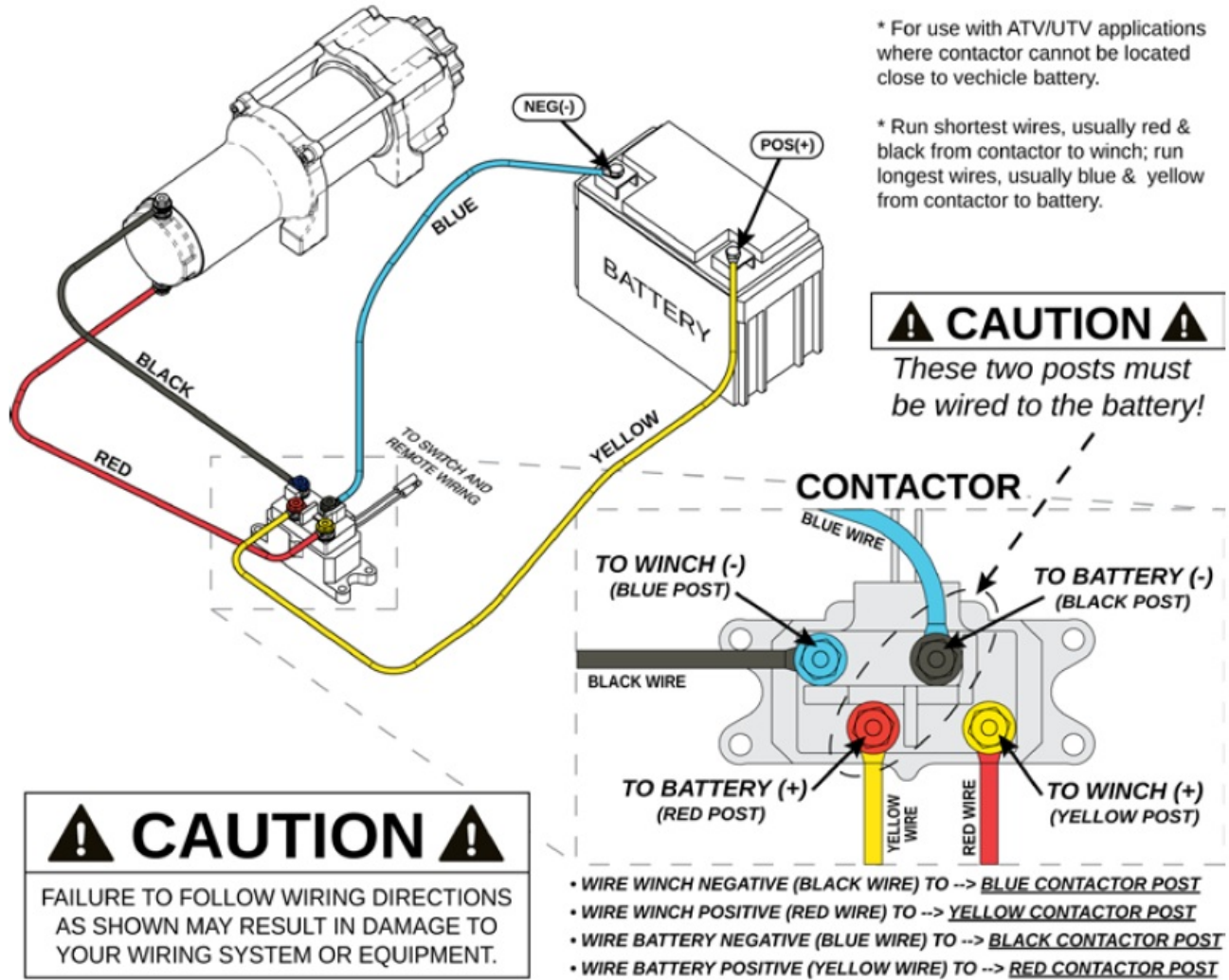


Figure - 11

# ALTERNATE WINCH WIRING DIAGRAM



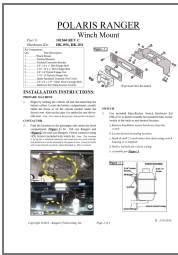
4. Connect winch, battery, and remaining switch wiring to your contactor using the alternate wiring diagram on 19. Secure all wires and reconnect battery positive & ground cable.

- **NOTE:** If you do not have the standard battery Using the ALTERNATE WIRING DIAGRAM (Figure 11) as a guide, attach the YELLOW POS(+) wire to the battery fed solenoid as shown in Figure 9&10. Then, attach the BLUE NEG(-) wire to the ground post as shown in Figure 9&10.



Copyright ©2018 – Kappers Fabricating, Inc.

Documents / Resources



[POLARIS HK-056 Polaris Ranger Winch Mount](#) [pdf] Installation Guide  
HK-056 Polaris Ranger Winch Mount, HK-056, Polaris Ranger Winch Mount, Ranger Winch Mount, Winch Mount, Mount

References

- [User Manual](#)

[Manuals+](#), [Privacy Policy](#)

This website is an independent publication and is neither affiliated with nor endorsed by any of the trademark owners. The "Bluetooth®" word mark and logos are registered trademarks owned by Bluetooth SIG, Inc. The "Wi-Fi®" word mark and logos are registered trademarks owned by the Wi-Fi Alliance. Any use of these marks on this website does not imply any affiliation with or endorsement.