

POLAR ASPECY PRO Spectrogram Analysis Instruction Manual

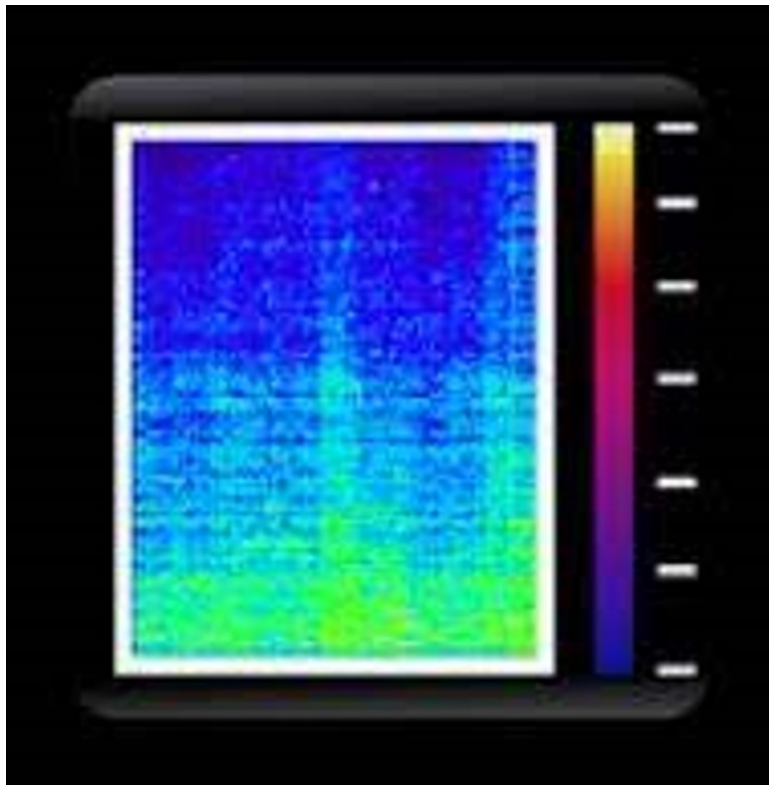
[Home](#) » [Polar](#) » POLAR ASPECY PRO Spectrogram Analysis Instruction Manual 

Contents

- 1 POLAR ASPECY PRO Spectrogram Analysis
- 2 user instructions
- 3 Led Button Functions
- 4 Led Home Screen
- 5 Setting Screen
- 6 Setting Icon
- 7 Home Icon
- 8 Refresh Icon
- 9 Color Temp
- 10 RGB COLOR
- 11 RGB SAVE COLOR
- 12 THEME
- 13 THEME COLOR DISPLAY
- 14 STROBE
- 15 BRIGHTNESS
- 16 PRESETS
- 17 DELETE A PRESET
- 18 Documents / Resources
- 19 Related Posts



POLAR ASPECY PRO Spectrogram Analysis



user instructions



Led Button Functions



Power Button: ———
 Push and hold for 2 seconds to power on
 Push and hold for 2 seconds to power off
Hard reset: Hold power button for 10 seconds.
Will cause LED to Restart and Reset to all Default settings.

Navigation joystick:
 Up, down, left, right, diagonal, push-to enter

Led Home Screen



Green Line: Indicates what Function the you are on.

Color Temp: Allows you to set desired LED color Temperature.

RGB Color: Allows you to set desired LED color Temperature.

Themes: Allows you to choose desired LED theme.

Setting: Allows you to set LED name, Reset all default setting, Backlight brightness.

ASPECT PRO 4.5hr

COLOR TEMP: 5600K

BRIGHTNESS: 100%

RGB COLOR: 0.0.0

STROBE: 0%

THEMES: STANDARD

PRESETS: SELECT

Time: Indicates how much LED power usage remains.

Battery Life: 0% 50% 100%

Brightness: LED Illuminating power 1%-100%

Strobe: Sets the speed at which the LEDs will flash.

Presets: Pre-determined colors set and saved by the user.

Refresh: Quickly resets all home functions back to default settings.

Home: Return to home screen.

Setting Screen



BACKLIGHT BRIGHTNESS: ALLOWS you to SET LED SCREEN BRIGHTNESS.

LIGHT NAME: ALLOWS you to SET LED NAME. STANDARD DEFAULT NAME (ASPECT 1)

RESTORE TO FACTORY DEFAULT SETTINGS: ALLOWS you to ERASE/RESET ALL SAVED INFORMATION ON LED (PRESETS, NAME, etc.)

FIRMWARE INFO: DISPLAYS LED FIRMWARE VERSION

Setting Icon



Setting Screen: WHEN youS SELECT SETTING ICON IT WILL DISPLAY SETTING SCREEN.



TO SELECT (SETTING OPTION) USE THE JOYSTICK TO NAVIGATE DOWNWARD, HIGHLIGHT THE SETTING ICON, AND CLICK TO ENTER.



Home Icon



Home Screen: WHEN youS SELECTS HOME ICON IT WILL DISPLAY THE HOME SCREEN.



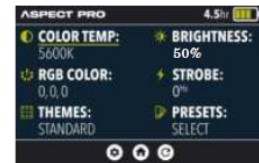
TO SELECT (HOME OPTION) USE THE JOYSTICK TO NAVIGATE DOWNWARD, HIGHLIGHT THE HOME OPTION, AND CLICK TO ENTER.



Refresh Icon



Home Screen Default Function Settings



REFRESH: ALLOWS you TO SET RESET ALL HOME SCREEN FUNCTIONS BACK TO DEFAULT.



TO SELECT (REFRESH ICON) USE THE JOYSTICK TO NAVIGATE DOWNWARD, HIGHLIGHT THE REFRESH ICON, AND CLICK ENTER

Color Temp



1. To select color; First Make sure COLOR TEMP is selected.
2. Press on the (bronze) joystick to select.
3. Once in the color temp screen. Color temp slot will highlight green, this indicates the you can move joystick Left or Right to set desired Led temperature.
4. Once the you has selected their desired color temperature you must press the joystick to lock temperature.
5. The action of pressing the joystick will return the you to the home screen and display the selected COLOR TEMP.



When **COLOR TEMP** is selected and in use, **RGB COLOR**, **THEME**, and **PRESETS** selection will dim by 70% and be unavailable for use.

(you must select (REFRESH ICON) so you can adjust desired functions.)

RGB COLOR



1. To select RGB COLOR; First navigate to RGB COLOR.
2. Then press on the (bronze) joystick to select.
3. Once in the RGB screen. Move the joy stick Left or Right to select desired RGB.
Press on the joystick to lock in selected RGB.
4. The action of pressing the joystick will return the you to the home screen and display the selected RGB.



When **RGB COLOR** is selected and in use, **COLOR TEMP**, **THEME**, and **PRESETS** selection will dim by 70% and be unavailable for use.

(YOU must select  so YOU can adjust desired functions.)

RGB SAVE COLOR



1. To select RGB COLOR; First make sure RGB COLOR is selected.
2. Press on the (bronze) joystick to select.
3. RGB Color slot will be highlighted, make sure to navigate downward.
4. Navigate downward to highlight Save Color Preset . Once highlighted press the joystick.



5. You will see Save Color Preset screen. It is on this screen where the you will select desired color. Once the you selects color you must press on the joystick to enter.
6. The action of pressing the joystick will return the you to the home screen and display the selected saved preset

RGB.

THEME



1. To select THEME; First Navigate to THEME.
2. Press on the (bronze) joystick to select.
3. Once within the THEME screen. Theme icons will highlight green, this indicates the YOU can move joystick to set desired THEME.
4. Once the YOU has selected you desired color THEME you must press on the joystick to lock THEME.
5. Once THEME is set, the you will only be able to adjust Brightness.



When **THEME** is selected and in use, **COLOR TEMP**, **RGB COLOR**, **STROBE**, and **PRESETS** selection will dim by 70% and be unavailable for use.

(YOU must select 🟢 so you can adjust desired functions.)

THEME COLOR DISPLAY



STANDARD Theme indicates no theme and will revert LED back to **STANDARD** 5600k Color Temp.




STROBE



1. To select STROBE; First Navigate to STROBE.
2. Press on the (bronze) joystick to select.
3. Once within the STROBE screen. STROBE slot will highlight green, this indicates the you can move joystick to set desired STROBE.
4. Once the you has selected their desired STROBE you must press on the joystick to lock STROBE.
5. Once Strobe is set, the you will be returned to the home screen.



When **STROBE** is in use **TEMP** selection will dim by 70% and be unavailable for use.

(you must select  so you can adjust desired functions.)

BRIGHTNESS



1. To select BRIGHTNESS; First Navigate to BRIGHTNESS.
2. Press on the (bronze) joystick to select.
3. Once within the BRIGHTNESS screen. BRIGHTNESS slot will highlight green, this indicates the you can move joystick to set desired BRIGHTNESS.
4. Once the you has selected their desired BRIGHTNESS you must press on the joystick to lock BRIGHTNESS.
5. Once BRIGHTNESS is set, the you will be returned to the home screen.


PRESETS



1. To select PRESETS; First make sure PRESETS is selected.
2. Press on the (bronze) joystick to select.
3. Once within the PRESETS SCREEN. The Built in PRESET color (CYAN) will be highlighted in white.
4. Use the joystick to move and highlight the (Add icon). Once highlighted double press the joystick.



5. you will then use the joystick to move left or right to select desired PRESET color.
6. Once the you has selected there desired PRESET color you will navigate downward using the joystick and highlight . Once the you highlights you must press on the joystick to enter and save color selected.

When RGB COLOR is selected and in use, COLOR TEMP, PRESETS, and THEMES selection will dim by 70% and be unavailable for use.
(YOU must select  so YOU can adjust desired functions.)



SAVED PRESET



*If you want to select a color...

- The action of pressing on the option will return you to the home screen and display the saved preset.

*If you want to select a color already saved in these presets you will have to Double click on the color cube for the LED to display the desired color.

DELETE A PRESET



- To select Delete a PRESET;
First make sure PRESETS is selected.
- Press on the (bronze) joystick to select.
- Once within the PRESETS SCREEN. Select the Preset color you would like to delete. (Press joystick once to select color cube)
- After using the Joystick to press and select the color you wish to delete. Use the joystick to navigate downward and press on the highlighted edit color. This will take you to the next step.
- Once in this screen you will navigate downward to the highlighted delete preset option. Then press enter on the joystick, This will take you to the next step.



- After selecting the delete preset option. You will need to select and press the yes option using the joystick. This will ensure the selected color is deleted.
 - Once you delete the selected color. The icon will auto populate, allowing you to add a new color preset if you desire.
 - After that you can either choose: Click on the home icon to take them to the Home Screen. Or Click on a preset color already saved to display said color on the LED.
- *What the Preset screen will look like if you have multiple Color presets.

This device complies with part 15 of the FCC Rules. Operation is subject to the following two conditions:

1. This device may not cause harmful interference, and
2. this device must accept any interference received, including interference that may cause undesired operation.


Any Changes or modifications not expressly approved by the party responsible for compliance could void the user's authority to operate the equipment.

Note: This equipment has been tested and found to comply with the limits for a Class B digital device, pursuant to part 15 of the FCC Rules. These limits are designed to provide reasonable protection against harmful interference in a residential installation. This equipment generates uses and can radiate radio frequency energy and, if not installed and used in accordance with the instructions, may cause harmful interference to radio communications. However, there is no guarantee that interference will not occur in a particular installation. If this equipment does cause harmful interference to radio or television reception, which can be determined by turning the equipment off and on, the user is encouraged to try to correct the interference by one or more of the following measures:

- Reorient or relocate the receiving antenna.
- Increase the separation between the equipment and receiver.
- Connect the equipment into an outlet on a circuit different from that to which the receiver is connected.
- Consult the dealer or an experienced radio/TV technician for help.

This equipment complies with FCC radiation exposure limits set forth for an uncontrolled environment. This equipment should be installed and operated with minimum distance 20cm between the radiator & your body.

Documents / Resources

	<p>POLAR ASPECY PRO Spectrogram Analysis [pdf] Instruction Manual PROMINI, 2AZQ4-PROMINI, 2AZQ4PROMINI, ASPECY PRO Spectrogram Analysis, ASPECY PRO, ASPECY, Spectrogram Analysis, Spectrogram, Analysis</p>
-------------------------------------------------------------------------------------	----------------------------------------------------------------------------------------------------------------------------------------------------------------------------------------------------------------------------------