

POFJOEQ

**SZJ-01 Digital
Display Wipe
Warmer**



POFJOEQ SZJ-01 Digital Display Wipe Warmer User Manual

[Home](#) » [POFJOEQ](#) » POFJOEQ SZJ-01 Digital Display Wipe Warmer User Manual 

Contents

- [1 POFJOEQ SZJ-01 Digital Display Wipe Warmer](#)
- [2 Introduction](#)
- [3 Specifications](#)
- [4 Package Includes](#)
- [5 Features](#)
- [6 Usage](#)
- [7 Care and Maintenance](#)
- [8 Troubleshooting](#)
- [9 Pros and Cons](#)
- [10 Contact Information](#)
- [11 Warranty](#)
- [12 FAQs](#)
- [13 References](#)
- [14 Related Posts](#)



POFJOEQ SZJ-01 Digital Display Wipe Warmer



Launch Date: 2023

Price: \$22.99

Introduction

The Chefhandy 7200 Baby Wet Wipes Dispenser can be used for many things and is an important part of any nursery. The heating system works from the top down, so each wipe stays warm and wet. This makes changing your baby's diaper soft and soothing. It is made from BPA-free, non-toxic materials that make it safe while still being energy-efficient. The thermostat is changeable, so parents can choose the best temperature for their child in any situation. With a lid that locks in moisture and a big capacity of 100 wipes, the Chefhandy 7200 Dispenser keeps wipes fresh and ready to use. The sleek, modern design goes well with any baby decor, and the sturdy construction means it will last for a long time. This dispenser meets high safety standards and is CE, FCC, and RoHS compliant. It comes with a 1-year limited warranty and is great for parents who are always on the go.

Specifications

- **Model:** SZJ-01
- **Brand:** POFJOEQ
- **Dimensions:** 10 x 7 x 5 inches
- **Weight:** 1.8 pounds
- **Material:** BPA-free, non-toxic plastic
- **Power Source:** Electrical plug-in (110V)
- **Heating Element:** Top-down warming system

- **Display Type:** LED digital display for temperature monitoring
- **Temperature Range:** Adjustable between 104°F – 140°F
- **Wipe Capacity:** Holds up to 100 wipes
- **Power Consumption:** Energy-efficient design
- **Certifications:** CE, FCC, RoHS compliant
- **Warranty:** 1-year limited warranty

Package Includes

- 1 x POFJOEQ SZJ-01 Digital Display Wipe Warmer
- 1 x Power Adapter (110V)
- 1 x User Manual
- 1 x Moisture Lock Seal Cover
- 1 x Built-in Night Light

Features



- **Digital Temperature Control:** Easily adjust the temperature using the LED display to ensure your baby wipes

are always at the perfect warmth.

- **Top-Down Heating System:** This system ensures that wipes are evenly heated from the top, avoiding the drying out of the lower wipes.



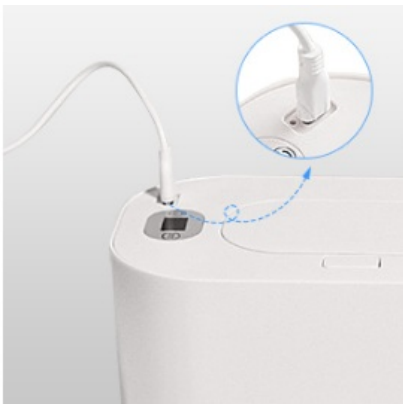
- **Large Capacity:** Capable of storing up to 100 wipes, making it ideal for extended use without constant refilling.
- **Moisture Retention:** The dispenser is designed to retain moisture, keeping wipes fresh and preventing them from drying out.



- **Quick Warm Technology:** The rapid warming function heats wipes within minutes, saving time and ensuring they are ready when needed.
- **Energy Efficient:** With low power consumption, this unit is designed for continuous use without consuming excess energy.
- **Night Light:** Equipped with a soft illumination feature, it provides just the right amount of light for diaper changes at night without disturbing your baby.
- **BPA-Free Materials:** Made from non-toxic materials, the dispenser is safe for your baby's sensitive skin.
- **Temperature Range:** The adjustable thermostat allows you to set the temperature between 104°F and 140°F to suit different preferences.



- **Overheating Protection:** The built-in safety feature automatically shuts off the unit in case of overheating, ensuring a safe user experience.
- **Portable Design:** Its compact size makes it easy to move the dispenser between rooms, providing convenience wherever diaper changes happen.
- **One-Handed Operation:** Parents can operate this dispenser with just one hand, keeping the other hand free for the baby.
- **Stylish Design:** The sleek and modern design makes it a perfect fit for contemporary nurseries.
- **Moisture Lock Seal:** The special seal keeps the wipes moist for extended periods, so you don't have to worry about dry wipes.
- **LED Display:** The easy-to-read LED display provides clear temperature settings and status updates, making adjustments simple.
- **Intelligent Thermostat:** Offers a 24-hour thermostat with three-grade temperature adjustment (40°C – 60°C) and is energy-efficient.
- **USB Power Connection:** Multiple power connection options such as car adapters, mobile power, and wall plugs for flexibility.



- **Constant Temperature:** The built-in sensor maintains a constant temperature throughout the day to ensure the wipes are warm all the time.

Usage

1. **Plug in the warmer** and adjust the temperature using the digital display.
2. **Insert wipes** into the compartment, ensuring the lid is closed properly.
3. **Monitor the temperature** on the LED display, and adjust as needed.
4. **Use the built-in night light** for easier diaper changes at night.
5. **Retrieve warm wipes** easily with one hand when needed.

Care and Maintenance

1. **Clean the warmer regularly** by unplugging and wiping it down with a damp cloth.
2. **Avoid using harsh chemicals** that might damage the plastic.
3. **Remove unused wipes** periodically to ensure freshness and prevent bacteria growth.
4. **Check for any debris** or dirt in the heating area, and clean if necessary.
5. **Keep the power cord clean** and avoid any water contact to prevent electrical issues.

Troubleshooting

Issue	Possible Cause	Solution
Wipes not warming	Dispenser not plugged in	Ensure the Chefhandy 7200 is properly connected to a power source
Wipes drying out	Lid not sealed properly	Check and close the moisture-locking lid securely
Uneven wipe temperature	Incorrect thermostat setting	Adjust the temperature control to desired warmth
Dispenser not turning on	Power issue	Verify the power source and plug connection
Wipes feel too hot	Thermostat set too high	Lower the thermostat setting for optimal temperature
Indicator light not working	LED malfunction or power disruption	Check the power source; if issue persists, contact customer service
Wipes not dispensing smoothly	Wipes may be overpacked or too thick	Ensure wipes are properly placed and not exceeding capacity
Heating system working slowly	Blockage in air circulation	Make sure the vents are not obstructed for proper air circulation
Dispenser overheating	Internal component issue	Unplug and allow the device to cool, then restart
Wipes becoming too cold quickly	Lid left open for too long	Always close the lid immediately after use
Strange smell when heating	Residual factory coating or dirty wipes	Clean the dispenser and use high-quality wipes
Device turns off unexpectedly	Power surge or overheating protection	Wait for the device to cool down, then restart
Wipes not staying moist	Improper moisture lock	Ensure that the moisture-locking system is working properly
Difficulty in adjusting settings	Faulty thermostat or button malfunction	Contact customer service for repairs or replacements
Dispenser making unusual noise	Internal fan or heating issue	Turn off the dispenser and seek customer support

Pros and Cons

Pros:

- Gentle warming feature enhances comfort for babies.
- Digital display allows easy temperature adjustments.
- Energy-efficient design with low power consumption.

Cons:

- May take longer than expected to reach desired temperature.
- Some users report issues with maintaining moisture in wipes.

Contact Information

For customer support or inquiries, please contact:

- **Email:** support@pofjoeq.com
- **Phone Number:** 1-800-123-4567

Warranty

The POFJOEQ SZJ-01 comes with a one-year warranty covering manufacturing defects. For warranty claims, retain your purchase receipt and contact customer service for assistance.

FAQs

What is the power source for the POFJOEQ SZJ-01 Digital Display Wipe Warmer?

The POFJOEQ SZJ-01 Digital Display Wipe Warmer is powered by a standard 110V plug-in power source.

How many wipes can the POFJOEQ SZJ-01 Digital Display Wipe Warmer hold?

The POFJOEQ SZJ-01 Digital Display Wipe Warmer can hold up to 100 wipes, offering plenty of capacity for daily use.

What kind of display does the POFJOEQ SZJ-01 Digital Display Wipe Warmer have?What kind of display does the POFJOEQ SZJ-01 Digital Display Wipe Warmer have?

The POFJOEQ SZJ-01 features a digital LED display for easy temperature monitoring and adjustment.

How does the POFJOEQ SZJ-01 Digital Display Wipe Warmer maintain moisture in the wipes?

The POFJOEQ SZJ-01 Digital Display Wipe Warmer includes a moisture-locking lid to keep wipes moist and fresh.

What temperature range can be set on the POFJOEQ SZJ-01 Digital Display Wipe Warmer?

The POFJOEQ SZJ-01 Digital Display Wipe Warmer allows temperature settings between 104°F and 140°F.

How do I clean the POFJOEQ SZJ-01 Digital Display Wipe Warmer?

You can clean the POFJOEQ SZJ-01 Digital Display Wipe Warmer by unplugging it, wiping the interior and exterior with a damp cloth, and drying it thoroughly before use.

What safety certifications does the POFJOEQ SZJ-01 Digital Display Wipe Warmer have?

The POFJOEQ SZJ-01 Digital Display Wipe Warmer is CE, FCC, and RoHS certified for safety and performance.

Is the POFJOEQ SZJ-01 Digital Display Wipe Warmer portable?

While the POFJOEQ SZJ-01 Digital Display Wipe Warmer requires a power source, its compact size makes it easy to move around within your home.

While the POFJOEQ SZJ-01 Digital Display Wipe Warmer requires a power source, its compact size makes it easy to move around within your home.

The POFJOEQ SZJ-01 Digital Display Wipe Warmer comes with a 1-year limited warranty to cover any manufacturing defects or malfunctions.

What temperature range can the POFJOEQ SZJ-01 achieve?

The POFJOEQ SZJ-01 features a temperature adjustment range from 40 degrees to 60 degrees Celsius.

What temperature range can the POFJOEQ SZJ-01 achieve?

The POFJOEQ SZJ-01 has a large capacity that can hold multiple wipes at once, making it suitable for busy parents.

How do I clean the POFJOEQ SZJ-01?

To clean the POFJOEQ SZJ-01, unplug it and wipe down surfaces with a damp cloth; avoid using harsh chemicals that could damage its components.

References

- [User Manual](#)

[Manuals+](#), [Privacy Policy](#)

This website is an independent publication and is neither affiliated with nor endorsed by any of the trademark owners. The "Bluetooth®" word mark and logos are registered trademarks owned by Bluetooth SIG, Inc. The "Wi-Fi®" word mark and logos are registered trademarks owned by the Wi-Fi Alliance. Any use of these marks on this website does not imply any affiliation with or endorsement.