

# PNI FLH70 Card Programmer User Manual

## Contents

- 1 PNI FLH70 card programmer**
  - 1.1 USER MANUAL**
    - 1.1.1 INSTALATION**
    - INSTRUCTIONS:**
    - 1.1.2 INITIALIZE LOCK:**
    - 1.1.3 BASIC OPERATION:**
    - 1.1.4 Card programming:**
- 2 Documents / Resources**
  - 2.1 References**
- 3 Related Posts**

## PNI FLH70 card programmer

for CH2000L PRO/CH2000R PRO hotel lock

## USER MANUAL



**WARNING:** In order to use CH2000L/R PRO lock you need the card programmer PNI FLH70 (CD software and RFID card included) and proximity cards PNI EMC-06 13.56 MHz. You can find the full user manual on the CD.

### INSTALATION INSTRUCTIONS:

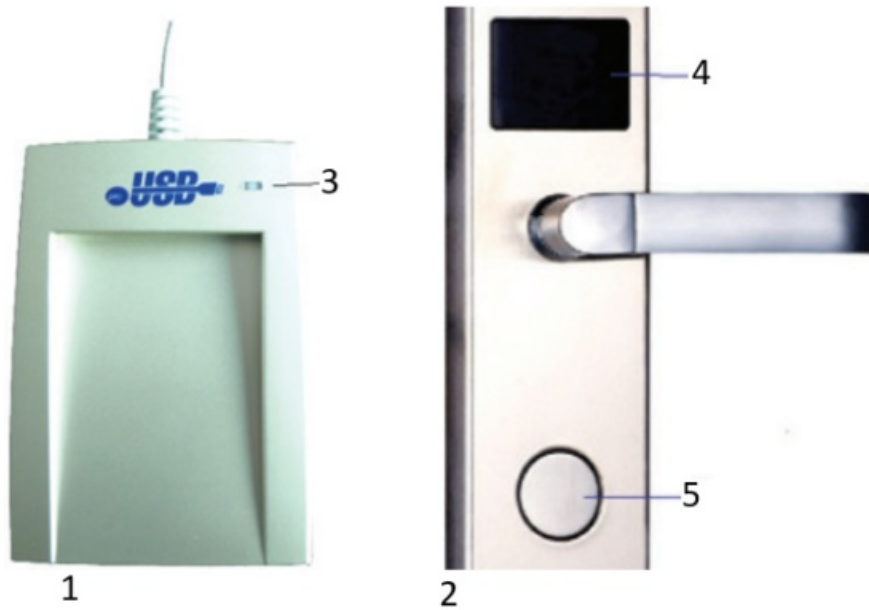
#### 1. Hardware and software requirements:

PC with Windows OS .

#### 2. Card Reader installation:

Connect the Card Reader wire with computer's USB port, when Green LED lights after two beeps, installation succeed.

Note: the card reader is not included.



1. Card reader
2. Lock
3. LED
4. Inductive zone
5. Mechanical key

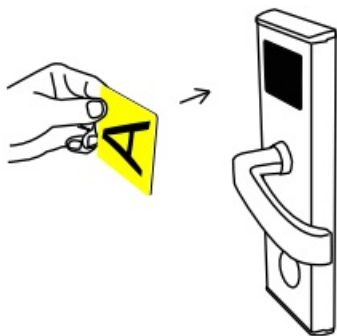
### 3. Door Lock Software Installation:

The Door Lock Software is "Setup.Exe" from the CD.

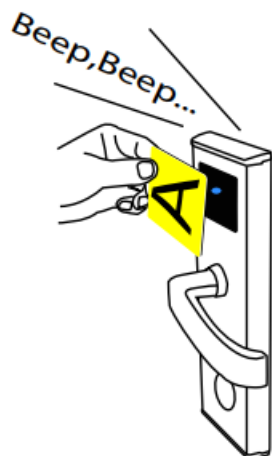
Double click this software to installation. As normal, installation can be finished following the indication "Next" showing as below. Instructions for the software can be found on the CD.

#### INITIALIZE LOCK:

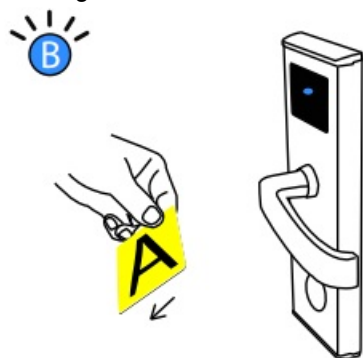
- Initialize-STEP 1 Set hotel code



1. Place an Authorized card near the sensor window.



blue light flash with 2 times beep



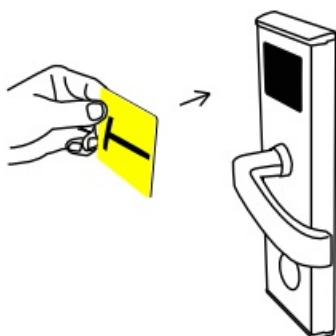
2. Move away card



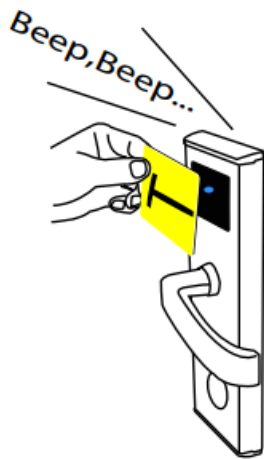
Each brand new lock should be initialized as the following 3 steps after they had been installed on the door. Since when the lock been initialized it has the ability identify the keycards issued by Hotel lock system which is registered by the same Authorized card.

You don't needs do the above again in daily using unless the lock ready to moved to another hotel. Different hotel should use different hotel code(Authorized card saves hotel code info)

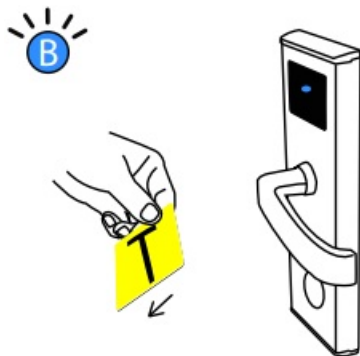
Initialize-STEP 2 Activate clock



1. Place a fresh Time card near the sensor window.



blue light flash with 2 beeps.



2. Move away card



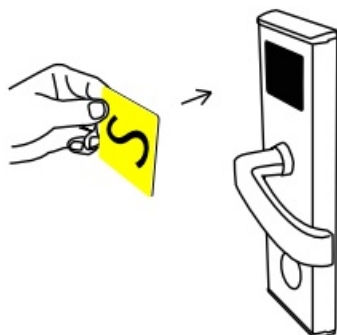
Time card should be issued in Hotel Lock System

It should be in fresh time which same as the current real time. You can not use a yesterday issued Time card or even many minutes ago's because the clock of lock should always run at same or near as the real time.

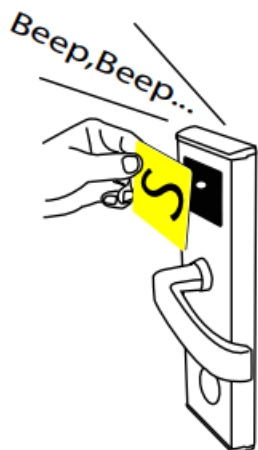
To reduce the error between clock of lock and the real, we suggest 1 fresh Time card do set 1 floor rooms only. After finish 1 floor you should issue another fresh.

Or you can do adjust the 'Setting time' at a time several minutes ahead of the real when you issue it in Hotel Lock System. Then you can do floor by floor by changing a fresh Time card.

Initialize-STEP 3 Set room ID



1. Place a Setting card near the sensor window.



blue light flash with 2 beeps



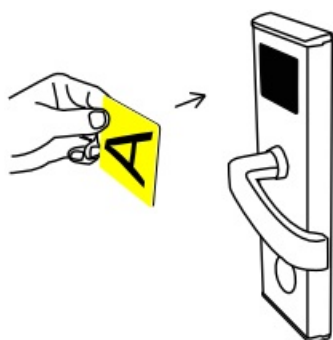
2. Move away card



Setting card should be issued in Hotel Lock System It should be 1 pc for 1 room because it saves 1 room ID only.

We suggest you issue all rooms at one time and mark on each card room ID.

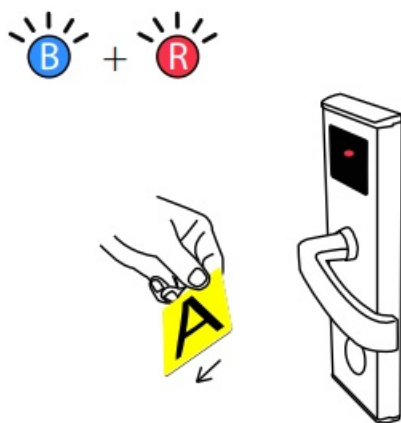
- Revoke hotel code



1. Place the Authorized card to the sensor window



blue light flash with 4 times beep (two long and two short). red light flash in the end.



2. Remove the Authorized card. Finished it.



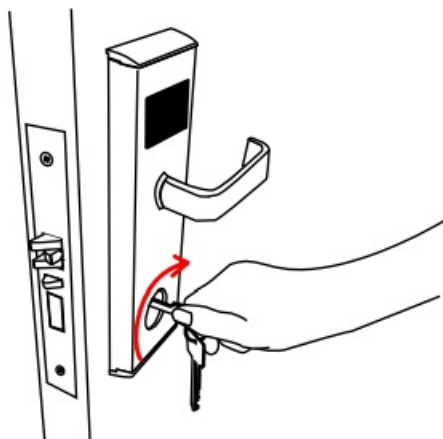
Function-Since the hotel code been revoked, the lock can't identify any function cards. It will show 1 time red light (page 11)

Actually the revoke hotel code action is same as initialize STEP 1 but reverse result.

It is cycle working. One time read set and next time read to revoke.

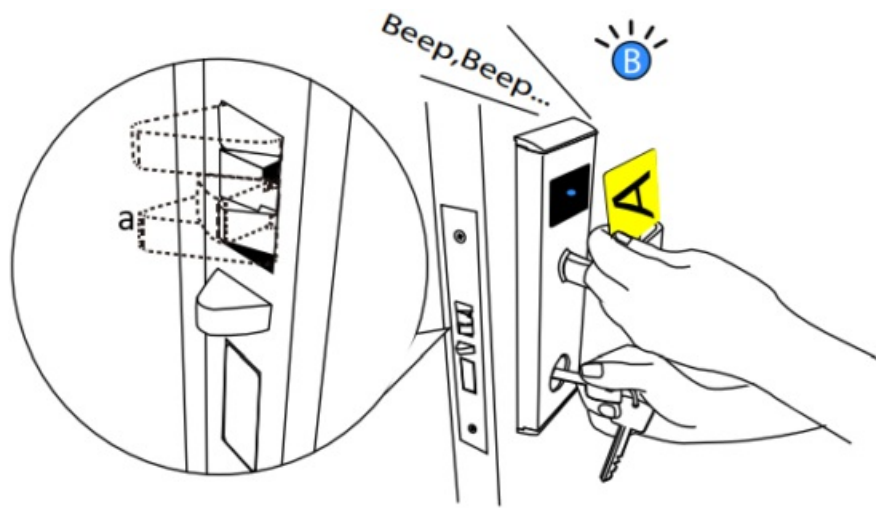
Revoke hotel code will be succeed only by using the same Authorized card which was did set hotel code before time.

- FORCE set hotel code



1. Insert the emergency key and turn it to make the latch retracted

2. Place the Authorized card close to sensor window.



a: keep latch retracted

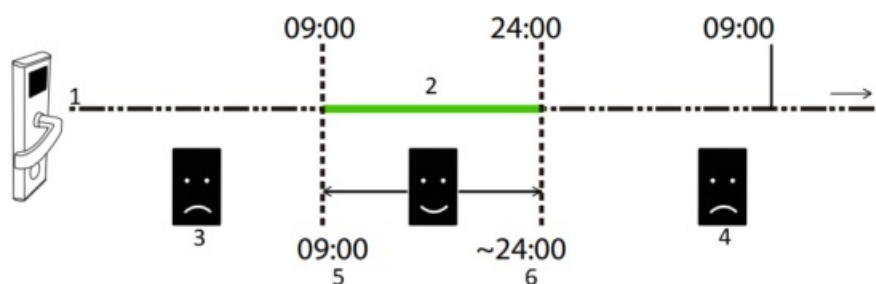
3. Release the emergency key, finished!



Force set hotel code should be considered when initialize set hotel code (read Authorized card) failed.  
Also you can do force set hotel code as STEP 1 because it is same final effect as normal initialize STEP 1 (read Authorized card).

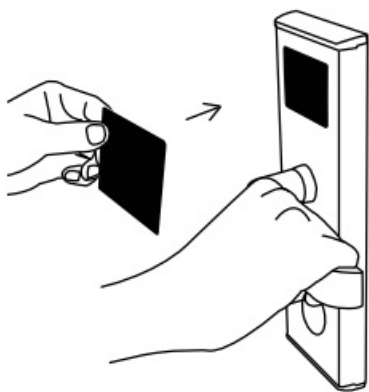
• What can hotel lock knows the card in valid term or not?

next day

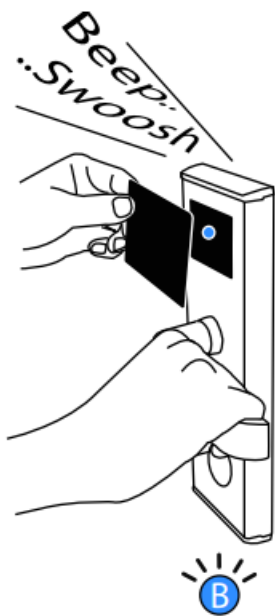


1. Clock of lock
2. Valid term
3. still not effective
4. expiry
5. Check in (start time)
6. Due Check out (end time)

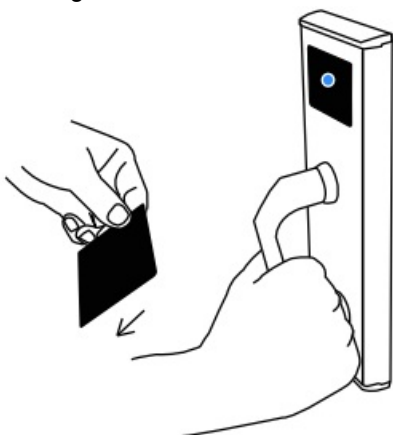
**BASIC OPERATION:**



1. Place a M1 card near to the sensor window



blue light flash

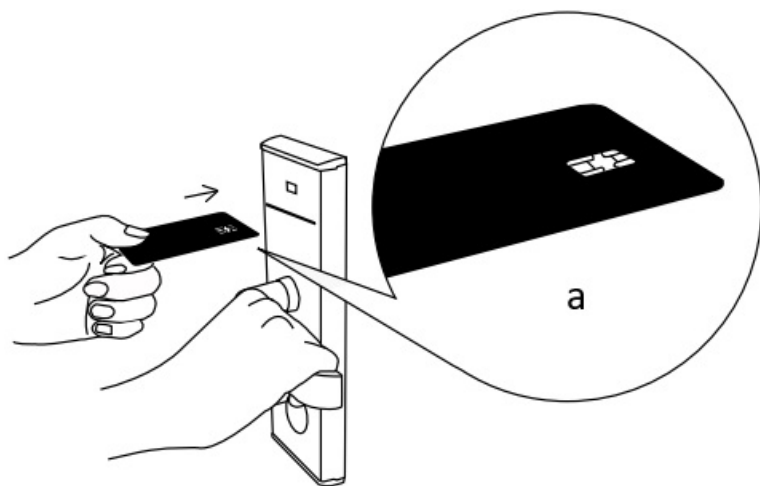


2. Remove card and shake the handle.

**Card programming:**

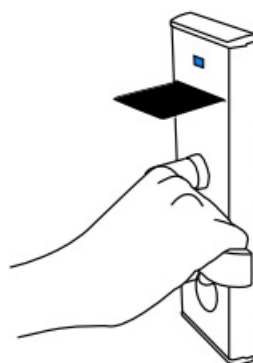
- Open lock



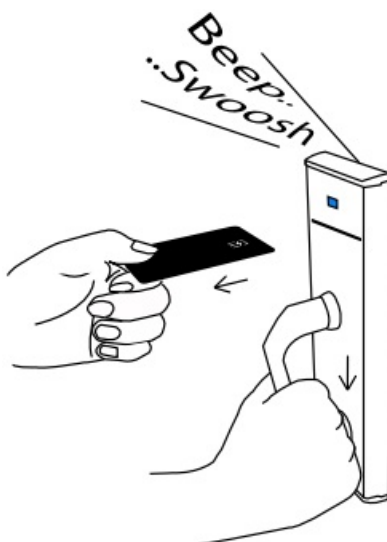


a: with chip upturned

1. Insert IC card with chip upturned.



blue light flash continuous



2. Pull out of card, the blue light keep on. Shake the handle before the light die.



EN:

EU Simplified Declaration of Conformity

SC ONLINESHOP SRL declares that RFID card programmer PNI FLH70 complies with the Directive EMC 2014/30/EU. The full text of the EU declaration of conformity is available at the following Internet address:

<https://www.mypni.eu/products/9919/download/certifications>

## CERTIFICATE OF QUALITY AND COMMERCIAL WARRANTY

The warranty period for natural persons is 24 months as of the delivery date for the manufacturing and material defects.

The warranty period for legal entities is 12 months as of the delivery date for the manufacturing and material defects.


The cables, adaptors, consumables, batteries, accumulators, battery chargers, transformers, microphones, earphones, aerials which are part of the products or are delivered with them shall have a commercial warranty of 6 months as of the date of the product sale to the end consumer. The term of warranty shall be calculated as of the invoicing date of each product individually.

The average term of the product service life is 48 months subject to the compliance with the assembly and operation instructions accompanying the product.

The commercial warranty shall not impair the consumer rights provided by the applicable legislation in force, namely Emergency Government Ordinance 140/28.12.2021 on certain issues related to contracts for the sale of goods, the Government Ordinance 21/1992 on the consumer protection as subsequently amended and supplemented by Law 296/2004 on the consumption code as subsequently amended and supplemented.



## Documents / Resources

	<p><a href="#">PNI PNI FLH70 Card Programmer</a> [pdf] User Manual CH2000L PRO, CH2000R PRO, PNI FLH70 Card Programmer, PNI FLH70, Card Programmer, Programmer</p>
-------------------------------------------------------------------------------------	------------------------------------------------------------------------------------------------------------------------------------------------------------------------

## References

- [mypni.eu/products/9919/download/certifications](https://mypni.eu/products/9919/download/certifications)
- [User Manual](#)

### Manuals+ Privacy Policy

This website is an independent publication and is neither affiliated with nor endorsed by any of the trademark owners. The "Bluetooth®" word mark and logos are registered trademarks owned by Bluetooth SIG, Inc. The "Wi-Fi®" word mark and logos are registered trademarks owned by the Wi-Fi Alliance. Any use of these marks on this website does not imply any affiliation with or endorsement.