



PNI DK101 Control Access Keypad with Proximity Caed Reader User Manual

[Home](#) » [PNI](#) » PNI DK101 Control Access Keypad with Proximity Caed Reader User Manual

Contents [[hide](#)]

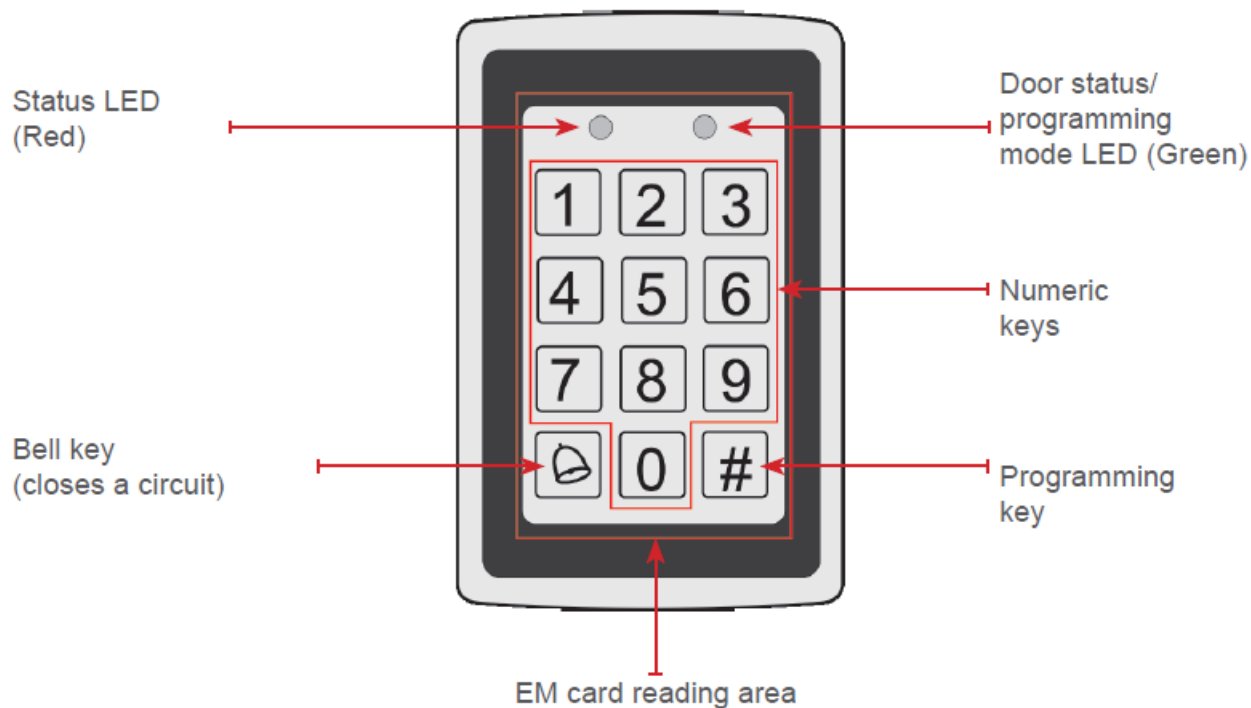
- [1 PRODUCT DESCRIPTION TECHNICAL SPECIFICATIONS](#)
- [2 FACTORY DEFAULT VALUES](#)
- [3 OPTIC AND SOUND INDICATORS](#)
- [4 FUNCTIONS AND SETTINGS PROGRAMMING](#)
- [5 USER INSTRUCTION](#)
- [6 FREQUENTLY ASKED QUESTIONS](#)
- [7 WIRING DIAGRAM WITH TIME DELAY POWER SUPPLY](#)
- [8 WIRING DIAGRAM WITH SIMPLE POWER SUPPLY](#)
- [9 Documents / Resources](#)
- [10 Related Posts](#)



PNI DK101 Control Access Keypad with Proximity Caed Reader



PRODUCT DESCRIPTION



TECHNICAL SPECIFICATIONS

Power voltage	12Vdc+12% / 1.2A
Unlock relay	12Vdc/2A
Work ambient temperature	-10 ~ 45°C
Storage ambient temperature	-10 ~ 55°C
Work relative humidity	40~90% RH
Storage relative humidity	20~90% RH
Card memory	1000 pcs.
PIN memory	1*public , 1000*private
Reader frequency	125KHz
Compatible card type	EM (electromagnetic)
Card reading distance	0 – 5 cm
Electric lock interface	NO or NC relay output
Available connections	Exit button / Bell / Door contact / Alarm

FACTORY DEFAULT VALUES

Programming PIN	881122 (please change this when first installing the keypad)
Door open mode	Card or PIN (default public PIN 1234)
Private PIN	0000
Unlock time	3 sec.
Tamper alarm	On
Door contact	Off
Lock status	Off

Alarm delay	0 sec.
Modify private PIN	Off

OPTIC AND SOUND INDICATORS

Normal working mode:

- command confirmation: short beep
- invalid command: long beep

Programming mode

- green LED on
- command confirmation: 2 short beeps
- invalid command: 3 short beeps

FUNCTIONS AND SETTINGS PROGRAMMING

- Enter programming mode: press [#] + [programming PIN] (the default programming PIN is 881122). You will hear 2 confirmation beeps and the green LED will light.
- Change programming PIN: press [0] + [new programming PIN] + [confirm new PIN]. You will hear 3 confirmation

beeps.

- Door open mode selection
- card or PIN: press [1] + [0]. You will hear 2 confirmation beeps.
- card + PIN: press [1] + [1]. You will hear 2 confirmation beeps.

NOTE: In card or PNI door open mode the PIN is either the public one or a private one (up to 999).

- Door open time setting: press [2] + [TT], TT = time interval in seconds. You will hear 2 confirmation beeps.

For example, if the door open time is 3 sec then TT = 03

- Change public PIN: press [3] + [new 4 digit PIN]. You will hear 2 confirmation beeps.
- Tamper switch:
- disable: press [4] + [0]. You will hear 2 confirmation beeps.
- enable: press [4] + [1]. You will hear 2 confirmation beeps.
- Enrolling EM cards: press [5] + [3 digit index code] + present card 1 + present card 2 + [3].

After every presented card you will hear 3 confirmation beeps.

- the 3 digit index code (001 – 999) is important for deleting a lost card.
- when enrolling multiple cards the index code will be increased automatically.
- the default private PIN for every card is 0000
- Door contact:
- disable: press [6] + [0]. You will hear 2 confirmation beeps.
- enable: press [6] + [1] to deactivate the tamper switch. You will hear 2 confirmation beeps
- NOTE: The door contact must be purchased separately.
- Delete cards:
- Delete card by index code: press [7] + [index code 1] + [index code 2] + ..+ [#]. After every index code you will hear a long confirmation beep.
- Delete card by presenting it: press [7] + present card 1 + present card 2 + ... + [#]. After every card you will hear a long confirmation beep.
- Delete all cards: restore factory default settings
- NOTE: The private PIN associated to a card will be deleted at the same time with the card.
- Modify private PINs:
- disable: press [1] + [2]
- enable: press [1] + [3]

NOTE: Modify private PIN: exit programming mode the long press [#] (the green LED will light) + present card + [old private PIN] (default 0000) + [new private PIN] + [repeat new private PIN]. You will hear 2 confirmation beeps.

- Door contact alarm:
- disable: press [8] + [0]. You will hear 2 confirmation beeps.
- enable: press [8] + [1]. You will hear 2 confirmation beeps.

NOTE: Enabling this option will cause the keypad to sound when the door is left open or when the door is not unlocked from the keypad.

- Alarm delay time: press [8] + [2] + [TT], TT = time interval in seconds. You will hear 2 confirmation beeps.

For example, if the door open time is 3 sec then TT = 03.

NOTE: This function can be used after enabling the door contact.

- Exit programming mode: press [#]. You will hear 3 confirmation beeps.
- Cancel command: press [#]

- Restore factory default: press [8] + [6]
- Reset programming PIN: short the J2 jumper to reset programming PIN to factory default.

USER INSTRUCTION

Card or PIN door open mode:

- present card or type your private PIN on the keypad

Card + PIN door open mode:

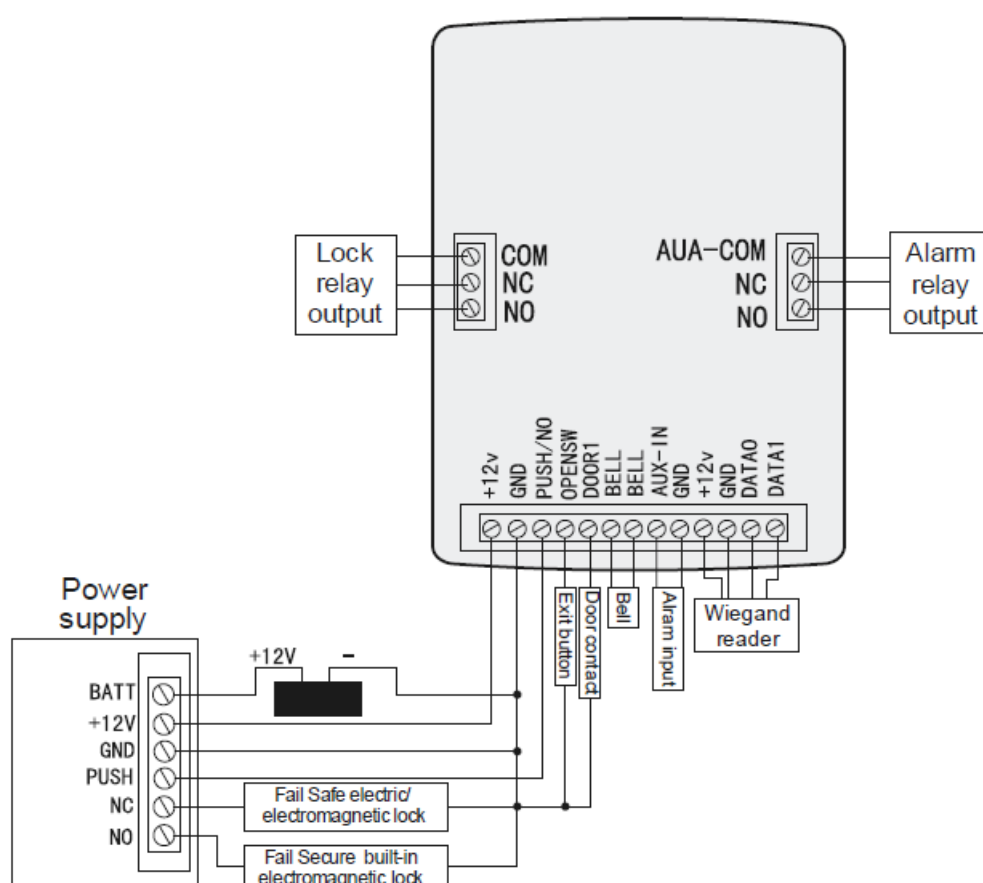
- present card the type your private PIN on the keypad

FREQUENTLY ASKED QUESTIONS

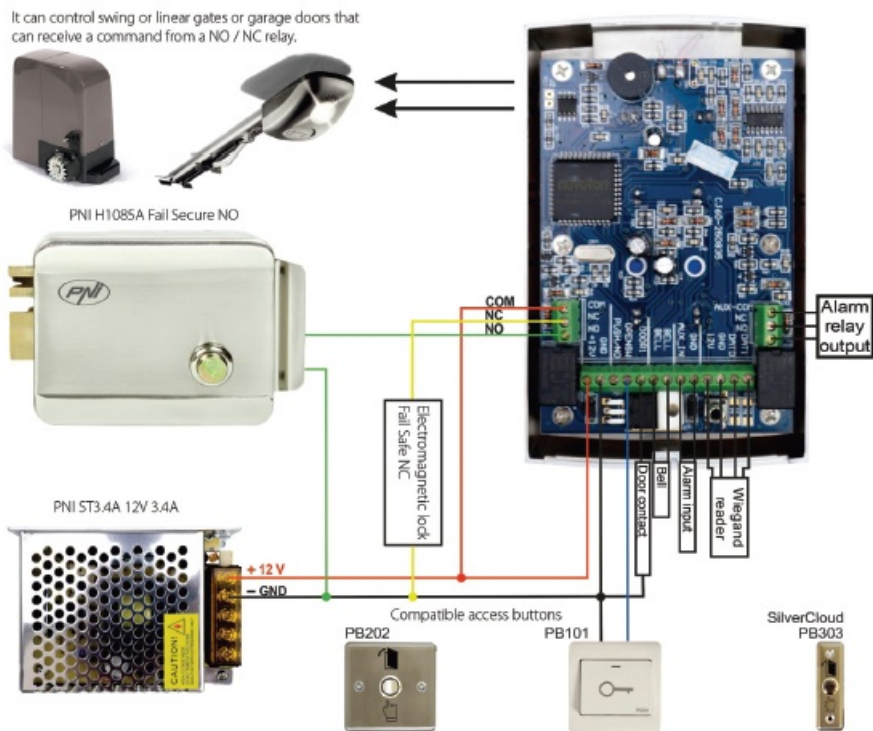
After the lock is opened there are 8 short beeps	– the keypad needs higher voltage, please check the power supply
The card reading distance is too short or the card can't be read	– the electric current is too low, please check the power supply
After presenting the card there are 3 beeps and the lock doesn't open	– the keypad works only in card+PIN mode – the keypad is in programming mode
Present an enrolled card does not unlock the door	– check if the door contact is in alarm mode. Disable door contact.
Can't enter programming mode and a long beep is heard	– multiple buttons were pressed before trying to enter programming mode. Wait a few seconds then try again
After pressing [5] there are 3 beeps	– card memory full

After pressing [5] + [index code] there are 3 beeps	– the index code is already in use
The keypad exited programming mode by itself	– if there is no input in 20 sec the keypad will automatically exit programming mode

WIRING DIAGRAM WITH TIME DELAY POWER SUPPLY



WIRING DIAGRAM WITH SIMPLE POWER SUPPLY



Documents / Resources

	<p>PNI DK101 Control Access Keypad with Proximity Caed Reader [pdf] User Manual</p> <p>DK101, Control Access Keypad with Proximity Caed Reader</p>
--	--