



# PNI Clementine 8428BT Radio MP2 Player with Bluetooth User Manual

[Home](#) » [PNI](#) » PNI Clementine 8428BT Radio MP2 Player with Bluetooth User Manual 

## Contents

- [1 PNI Clementine 8428BT Radio MP2 Player with Bluetooth](#)
- [2 Front panel description](#)
- [3 Rear panel description](#)
- [4 Remote control description](#)
- [5 Installation instructions](#)
- [6 Connections](#)
- [7 Playback source selection](#)
- [8 Troubleshooting](#)
- [9 Technical specifications](#)
- [10 Documents / Resources](#)
  - [10.1 References](#)
- [11 Related Posts](#)



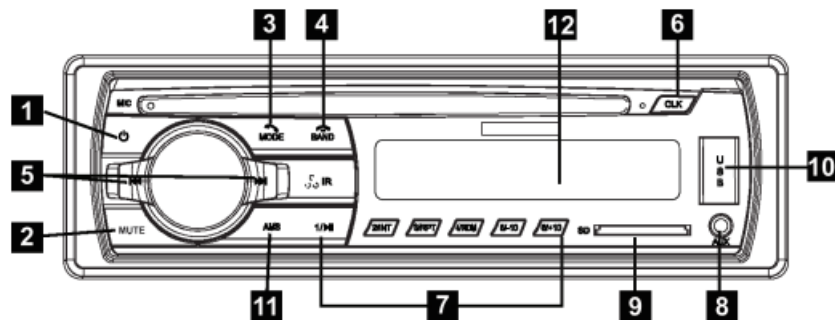
## PNI Clementine 8428BT Radio MP2 Player with Bluetooth



## Warnings

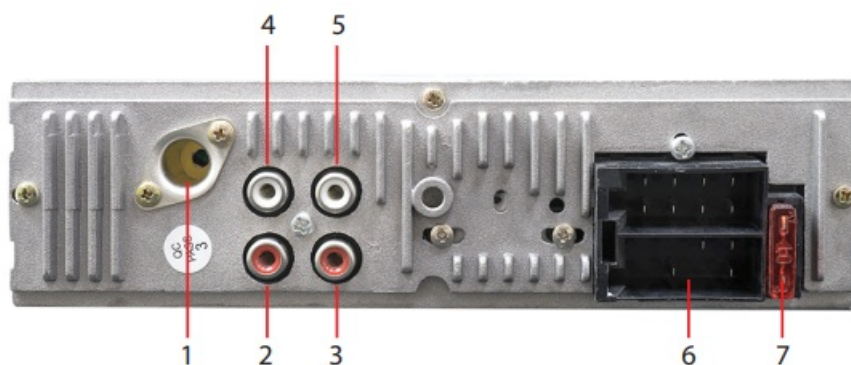
- Do not use the product in very high or very low temperature conditions.
- Do not insert metal objects (screws or coins) inside the unit to avoid shorting the internal components.
- The player can play MP3/WMA files. Do not try to play photo or video files.

## Front panel description



1. On/Off
2. Mute
3. Select playback source (Radio, Bluetooth, AUX-In)/Answer phone call
4. Select radio station group (F1, F2, F3)/Reject phone call
5. Search radio frequency/Scroll forward or backward
6. Time setting
7. Stored radio stations
8. Auxiliary input
9. SD card slot
10. USB slot
11. Automatic search and Save button for radio stations
12. Display

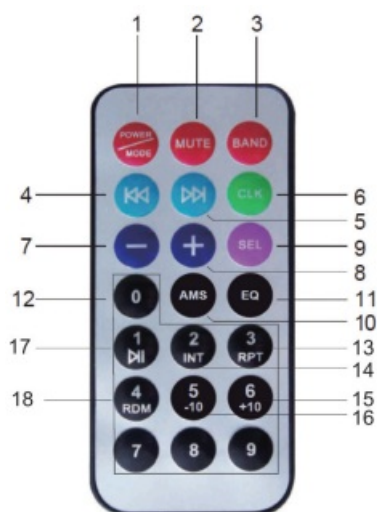
## Rear panel description



1. FM antenna
2. Right front speaker
3. Right rear speaker
4. Left front speaker
5. Left rear speaker
6. ISO connector

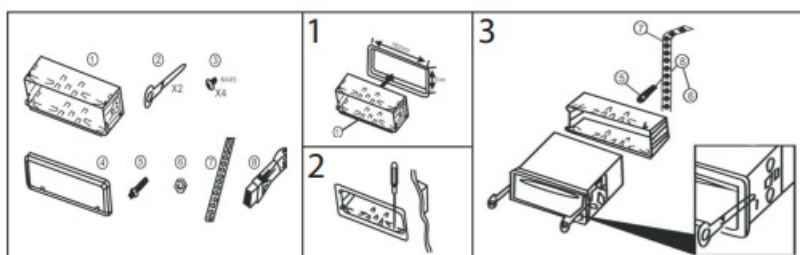
## 7. Fuse

### Remote control description



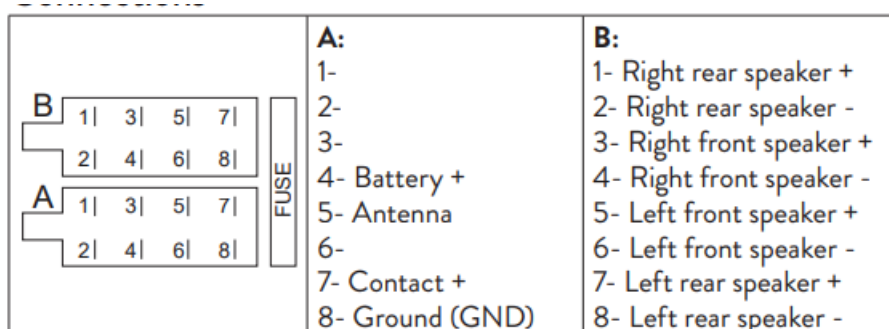
1. Long press: on/off Short press: select source
2. Mute
3. Select radio station group
4. Previous song
5. Next song
6. Clock display
7. Volume -
8. Volume +
9. Multifunction selection key
10. Automatic search and storage of radio stations
11. EQ – equalizer
12. Numeric keys
13. Repeat current song
14. Play intro
15. 10 songs before
16. 10 songs back
17. Play/pause song
18. Random playback

### Installation instructions



1. Insert the mounting bracket into the dashboard.
2. Bend the bracket's clips for a more secure fit.
3. To remove the unit from the dashboard, insert the included keys on both sides of the brackets, then pull the unit out.

## Connections



## WARNING

The installation of this player must be performed by qualified personnel only (car electrician). Before installation, please check the power supply and the audio connectors on the car. Some cars are equipped with sockets that do not comply with the ISO standard (different organisation of wires inside the socket). If the car is not equipped with ISO connectors, the necessary modifications must be performed before the installation of the player.

## Time setup

1. Briefly press the CLK key. 00:00 will show on the screen.
2. Press and hold the CLK key again.
3. The hour indicator will flash. Turn the volume knob in both directions until you reach the desired value.
4. Briefly press the CLK key to confirm.
5. The minute indicator will flash. Turn the volume knob in both directions until you reach the desired value.
6. Wait a few seconds. The screen will return to the initial display mode.

## Playback source selection

Press the MODE key to select between: Radio, Bluetooth and AUX-in. FM Radio

## Searching for the radio frequency

1. Press the MODE key repeatedly until RADIO appears on the screen, immediately followed by the display of the current frequency.
2. Press the ◀ or ▶ key to search for another frequency.
3. Long press the ◀ or ▶ key to switch between MANUAL search and AUTO search (the search stops when the radio reaches a valid signal).

## Saving a radio station

There are 3 groups of radio stations available (F1, F2, F3) that can be selected by repeatedly pressing the BAND key, each group having 6 memories.

1. First select the group (F1, F2 or F3).
2. Search for your favorite radio station.
3. Long press the key (1 – 6) where you want to save the radio station.
4. On the screen, the group, the frequency and the position where the radio station was saved will be displayed.  
For example: F1 96.0 6

### **Searching for a saved radio station**

1. Press the AMS key to search through all saved radio stations.
2. The player will start scanning the memories.
3. Press the AMS key again to stop scanning.

### **Bluetooth AD2P**

Through Bluetooth function you can answer phone calls or play audio files through your car's audio system.

1. Press the MODE key repeatedly until BT OFF appears on the screen.
2. Activate the Bluetooth function on your smartphone.
3. Search for nearby Bluetooth devices.
4. Select "PNI 8428BT" and confirm the pairing.
5. BT ON will be displayed.
6. Now the two devices, the phone and the player, are paired.
7. Select the music you want to listen to on the car's audio system.

### **Answer a phone call via Bluetooth**

If you receive a phone call while listening to music via Bluetooth, the playback of the music will be interrupted during the call. Press the MODE key to answer the call and the BAND key to end or reject the call.

### **AUX-in**

1. Press the MODE key repeatedly until AUX IN appears on the screen.
2. Connect your phone to the player using an auxiliary cable (3.5mm).
3. Select from the phone the music you want to listen to on the car's audio system.

### **Troubleshooting**

1. **The unit does not turn on.**

Check the ISO connection and power cords.

2. **The on/off button does not work.**

Press the reset button on the unit. If the fault persists, disconnect the power supply and reconnect it.

3. **There is no sound or just a noise.**

Check the ISO connection, speaker cords, or sound settings in the player.

4. **Very poor quality sound.**

Check the ISO connection or speaker cables.

5. **Poor radio reception.**

Check the radio antenna connection.

## Technical specifications

Power voltage	12V
Bluetooth	Yes, AD2P
FM radio	Yes
FM frequency	87.5 – 108.0 MHz
Sensibility	≤ 20 dB
Stereo separation	≥ 25 dB
Signal-to-noise rate	≥ 60 dB
Compatible files	MP3, WMA
Distortion	≤ 0.3%
Memory	up to 18 FM radio stations can be stored (F1- 6 locations, F2-6 locations, F3-6 locations)

Maximum audio power	4 x 45W
Digital clock	Yes
ISO connector	Yes
Dimensions	188 x 122 x 58 mm
Standby consumption	max. 5mA
Operating temperature	-26°C~+80°C

## Documents / Resources

	<p><b><a href="#">PNI Clementine 8428BT Radio MP2 Player with Bluetooth</a></b> [pdf] User Manual Clementine 8428BT, Radio MP2 Player with Bluetooth, Clementine 8428BT Radio MP2 Player with Bluetooth</p>
---	---

## References

-  [mypni.eu/products/4782/download/certifications](https://mypni.eu/products/4782/download/certifications)