



plustek Large Format Automatic Scanning Solution Instructions

[Home](#) » [plustek](#) » plustek Large Format Automatic Scanning Solution Instructions

Contents [[hide](#)]

- 1 [plustek Large Format Automatic Scanning Solution](#)
- 2 [KEY FEATURES](#)
- 3 [SOFTWARE](#)
- 4 [FEATURES](#)
- 5 [Specification](#)
- 6 [Functions](#)
- 7 [Documents / Resources](#)
 - 7.1 [References](#)
- 8 [Related Posts](#)

plustek

plustek Large Format Automatic Scanning Solution



The Plustek T300 is a high practicality A3 sized document scanner that features 50ppm (100 ipm) scan speed in color grayscale and B/W mode and 4,000 page per day duty cycle. Industry standard TWAIN driver ensures compatibility with almost any document imaging application. These features help not only education but also other industry, such as the legal department.

KEY FEATURES

- A3 size scanning area
- Easy-to-use single touch buttons, design for scan, OCR, PDF and Email
- 50ppm (100 ipm) scan speed (Grayscale, 300 dpi, A4 Landscape)
- Ultrasonic multifeed detection
- Scans documents up to 200" long
- Searchable PDF files format available
- Advanced image enhancement to automatically straighten and rotate pages, adjust brightness, detect color.

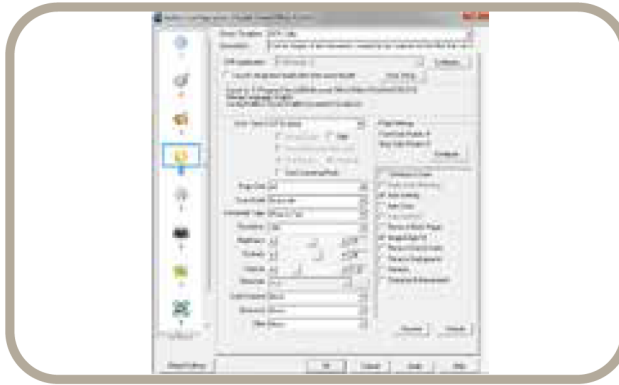
SOFTWARE

ABBYY FineReader Sprint



Industry standard TWAIN and WIA drivers combined with TIF, JPG, PDF and Microsoft Office file formats ensure compatibility with thousands of scanning and imaging programs. ABBYY FineReader Sprint is included to easily create and manage searchable PDFs at the touch of a button.

Plustek DocAction



Simplify document scanning by our button configuration software. DocAction enables you to specify your personalized scanning configuration settings and scan documents with the click of a button. Scanned documents are automatically sent directly to Printer, Email, Folder or FTP. DocAction also enables you scanning directly to many imaging and document management applications. DocAction saves scanned documents in all common imaging formats including JPEG, TIFF, and PDF.

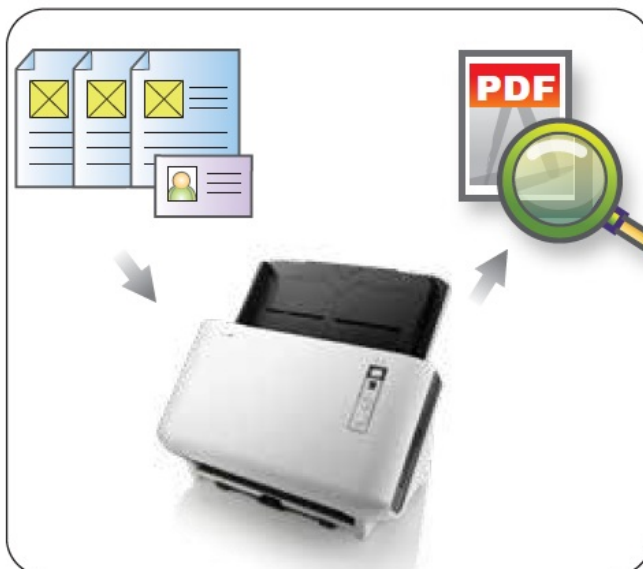
FEATURES

- **High practically features and flexible to integrate**



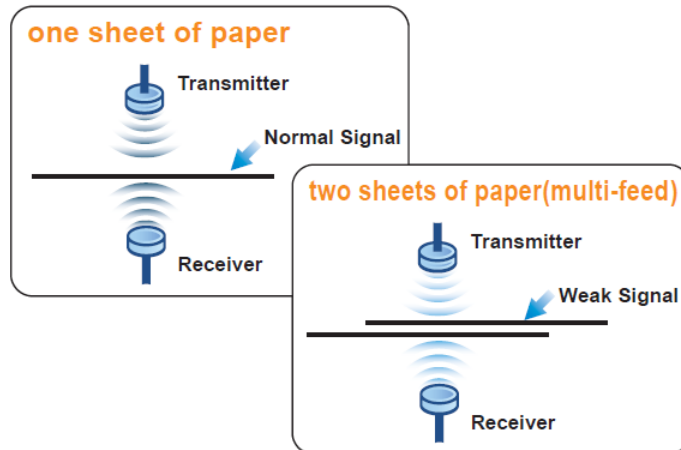
The Plustek T300 is suitable for integration purpose, for example, it can integrate with OMR and implement in the education. Or you can simply use our bundled software DocAction to configure your scan settings.

- **Searchable PDF files format and TWAIN compliant available**



The bundled software ABBYY FineReader can help you do OCR to generate the searchable PDF. The Plustek T300 is not only help you digitalized your large format document, but also help you do the filling job and meet the future data search purpose. The Plustek T300 also allows you use TWAIN compliant to scan.

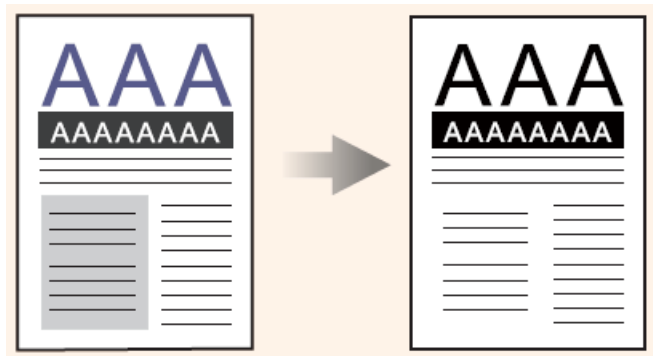
- **Intelligent Misfeed Function**



The ultrasonic sensor detects the Multi-feed of original documents during scanning. The ultrasonic function can be turned on when scanning document with labels, sticky notes, or taped receipts. This innovative design prevents Multi-feed and effectively scans documents of different weights or thickness. Thanks to Multi-feed prevention, optimum reliability is assured even when scanning high volumes of documents.

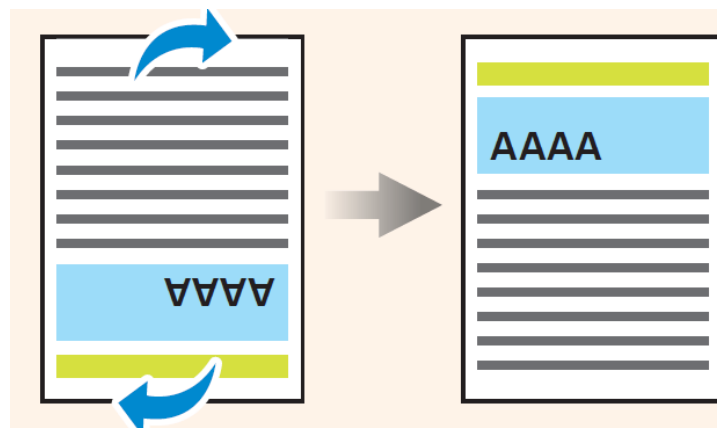
1. **Auto Threshold**

Automatically threshold the current image into a binary black and white image.



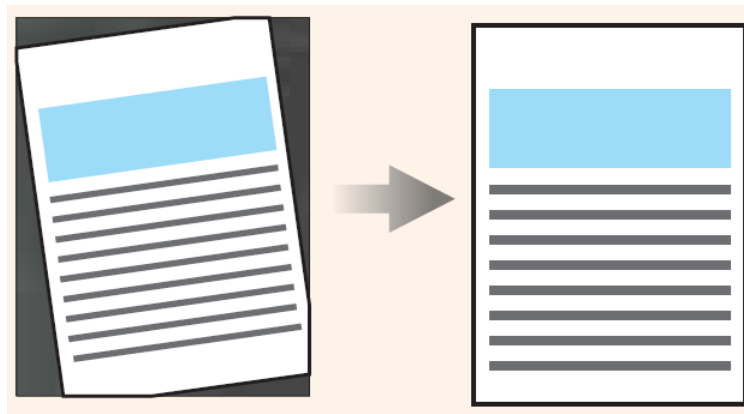
2. **Auto Rotate**

Automatically rotates document based on the contents of the document.



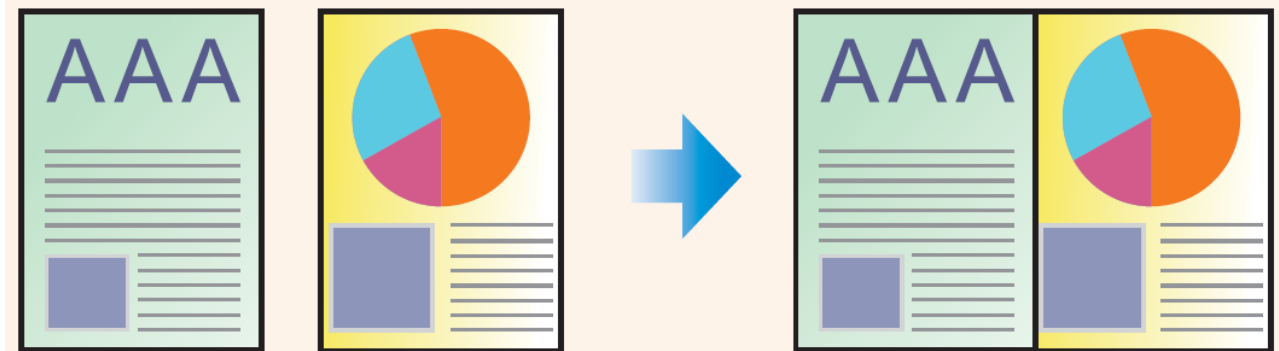
3. **Auto Crop & Deskew**

Automatically straightens and crops image to the documents actual size.



4. Merge Pages

allows you to scan both sides of your folded document and merge them into one image.

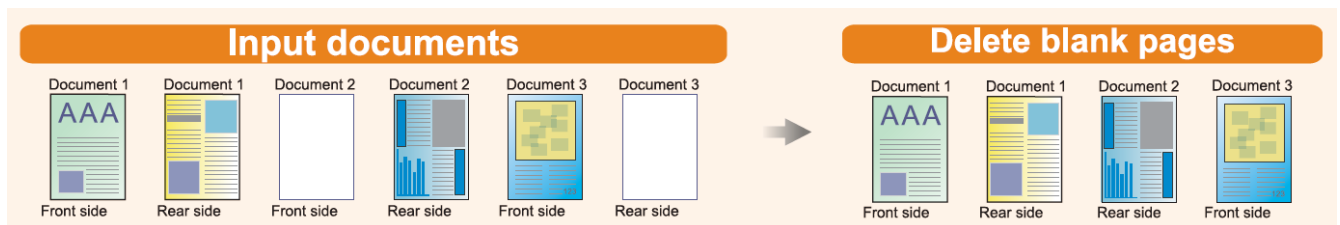


5. Color Dropout

Removes red, green or blue color when scanning forms.

6. Blank Page Removal

Automatically removes blank pages without manual editing.



Specification

Image Sensor	CIS x 2
Light Source	LED
Optical Resolution	600 dpi
Hardware Resolution	600 x 600 dpi
Scan Modes	Color: Input 48-bit, Output 24-bit Grayscale: Input 16-bit, Output 8-bit Black & White: 1-bit
ADF Capacity	1. 50 sheets (A4/ Letter, 70 g/ or 18 Lbs), Max. thickness under 10 mm (0.4") 2. 25 sheets (A3, 70 g/ or 18 Lbs) Note: Maximum ADF capacity varies, depending upon paper weight.
Scanning Speed (ADF)	50 ppm/ 100 ipm (Grayscale/ B&W mode, 300 dpi, A4 Landscape) 50 ppm/ 100 ipm (Grayscale/ B&W mode, 200 dpi, A4 Landscape) Note: Results may vary depending upon your scanning application, computer processor and system memory.
Scanning Area (W x L)	Max: 297 x 5080 mm (11.69" x 200") Min: 13.2 x 13.2 mm (0.52" x 0.52")
Acceptable Paper Sizes (W x L)	Max: 305 x 5080 mm (12" x 200") Min: 50.8 x 63.5 mm (2" x 2.5")
Acceptable Paper Weight (Thickness)	40 to 220 g/ (10 to 58 Lbs)
Multi-feed Detection	With ultrasonic technology
Daily Duty Scan (Sheets)	4,000
Action Button	4 Buttons: Up, Down, Scan, Standby 9 function keys: all customizable.
Power Supply	24 Vdc/ 2.7 A
Interface	USB 2.0
Net Weight	6.57 Kgs (14.48 Lbs)
Dimensions (W x D x H)	436 x 262 x 266 mm (17.16" x 10.31" x 10.47")
Protocol	TWAIN Compliant
OS	Windows XP / Vista / 7 / 8 / 10

Functions



- Supports document scanning up to A3 size.
- Fast scanning at speeds up to 50ppm/100ipm in Grayscale, B/W and color mode with 200dpi or 300 dpi, A4 Landscape
- Digitize paper business cards into easily-managed and sorted contacts, and turn your business cards into information.
- Save paper documents as searchable PDFs at the touch of a button and find your information faster.
- Allows you to easily upload files or scanned images to the E-mail.
- It can automatically crop your image or document according to your document edge.

plustek

Documents / Resources



[plustek Large Format Automatic Scanning Solution](#) [pdf] Instructions
Large Format Automatic Scanning Solution, T300 Scanner

References

- plustek.com