



# PLUG IN FESTIVALS IceCube 25 Compressor Cooler Instruction Manual

[Home](#) » [PLUG IN FESTIVALS](#) » PLUG IN FESTIVALS IceCube 25 Compressor Cooler Instruction Manual 

## Contents

- [1 PLUG-IN FESTIVALS IceCube 25 Compressor Cooler](#)
- [2 Important safety information](#)
- [3 Product Description](#)
- [4 Handling](#)
- [5 Cleaning](#)
- [6 Technical data](#)
- [7 Documents / Resources](#)
  - [7.1 References](#)
- [8 Related Posts](#)



**PLUG-IN FESTIVALS IceCube 25 Compressor Cooler**



## Important safety information

Please read these operating instructions carefully before the initial operation and keep them in a safe place. If you hand over your mobile device (hereinafter referred to as „device“), please also hand over these operating instructions. The manufacturer is not liable for damage caused by improper use or incorrect operation. This is a warning sign. It is used to warn of the possible danger of injury. Observe all safety instructions with this icon to avoid possible injury or death.

You will find the complete operating instructions and updates for your product at [www.pluginfestivals.de](http://www.pluginfestivals.de)

Warnings in these operating instructions are classified as follows for better differentiation:

**WARNING:** Indicates a hazardous situation which, if not avoided, could result in death or serious injury

**CAUTION:** Indicates a hazardous situation which, if not avoided, may result in minor or moderate injury

**ATTENTION:** Indicates a hazardous situation which, if not avoided, may result in damage to property or damage to the device

Please observe the safety instructions. If you have any questions, please contact our customer center. You can find the telephone number on the back.

## Safety instructions

Non-observance of these safety instructions may result in serious injuries or even death!

- Children aged between 3 and 8 years may only load and unload the device. Commissioning is not permitted. Children under 3 years of age must be kept away from the device. Parents are liable for their children
- Cleaning and maintaining of the device is not allowed by children without supervision
- Children are not allowed to play with this device

- Every user must have received an instruction in the safe use of the device and understand the resulting dangers
- Children over 8 years of age may only use this device if they are supervised and have understood the instructions
- Persons with reduced physical, sensory or mental abilities or a lack of experience and knowledge may use this device only after instruction and if they have understood them

### **Risk of death by electric shock**

- If the device shows visible damage, you are not allowed to put it into operation
- If the connection cable is damaged, it must be replaced by a qualified person to avoid any hazards.
- Repairs on this device may only be done by qualified technical staff
- Nonobservance can result in considerable dangers
- Do not place multiple sockets or portable power supplies at the rear of the unit.

### **Risk of Explosion**

Do not store explosive substances such as aerosol cans in the device.

### **Risk of fire**

- When setting up the device, ensure that the connecting cable is not pinched or damaged
- Keep the ventilation openings clear on all sides, ensure that there is sufficient ventilation for installation constructions
- Do not use mechanical devices or other aids to accelerate the defrosting process
- Do not damage the cooling circuit
- This symbol on the device indicates flammable materials

### **Risk of Health**

- First, check whether the cooling capacity is sufficient for your application and whether it meets the requirements for storing your food or drugs
- Foodstuffs may only be stored in the device in their original packaging or suitable containers
- If the lid of the device is left open for a long period of time there may be a strong temperature increase in the cooling compartments
- If you do not use the device for a longer period of time, please switch it off. Defrost the device completely. Clean and dry all surfaces thoroughly (see chapter 4)
- Leave the lid open (at least in the ventilation position) to prevent mold growth.
- Clean the surfaces that may come into contact with food regularly

### **Risk of Damage**

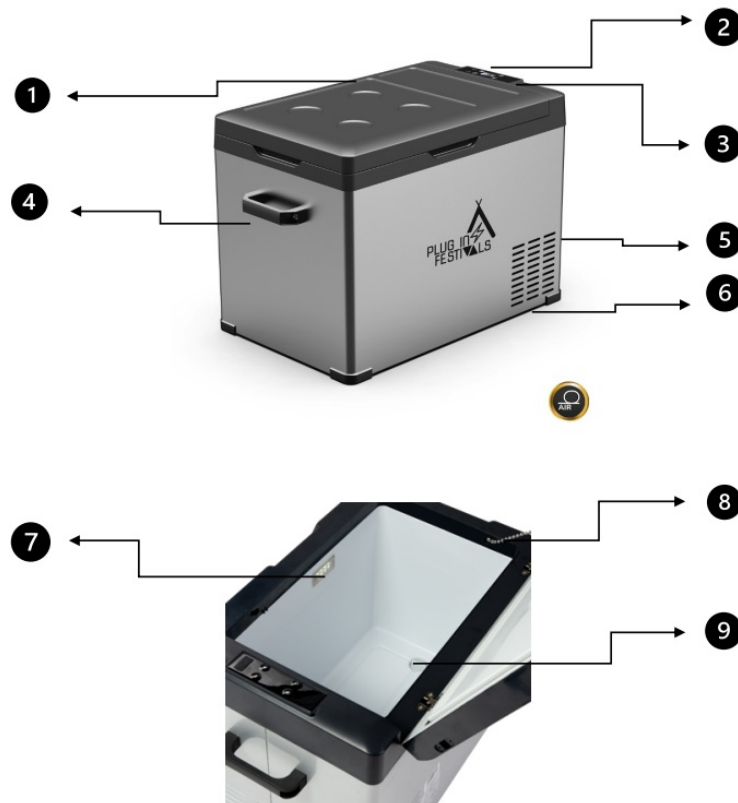
- Only transport the device in an upright position
- Compare the existing power supply with the voltage specification on the nameplate
- Do not use any electrical appliances inside the mobile device unless it is recommended by the manufacturer

- The device may not be exposed to rain
- At the end of its service life, this device must be disposed correctly (see chapter 13)
- The devices insulation contains combustible cyclopentane and requires a special disposal procedure. Dispose of the device at the end of its useful life at an appropriate recycling center.

Plug-in Festivals GmbH, Benutzerhandbuch IceCube (2023)

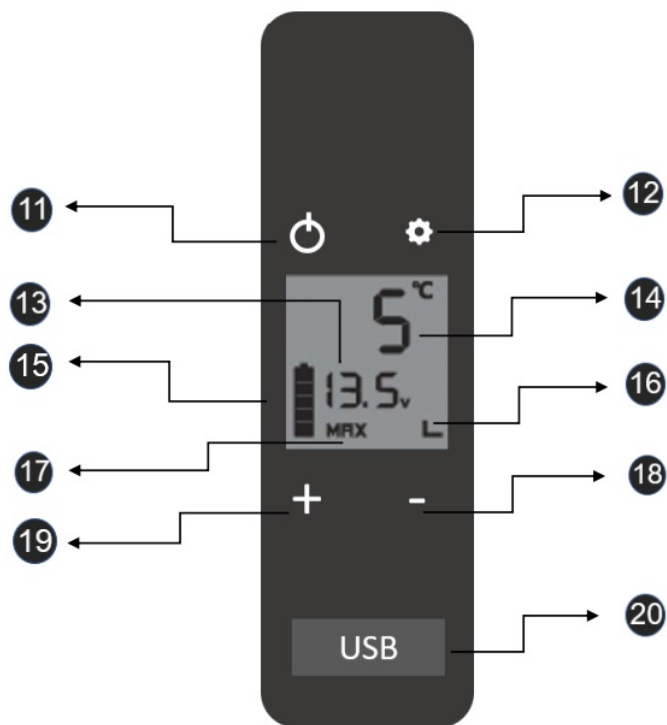
## Product Description

### Device



1. Lid
2. LC-Display
3. USB-Port
4. Handle
5. Connection for power cable (12 V & 230 V)
6. Fan grid
7. LED-light
8. Chain
9. Drain plug

### Display



- 10. On / Off Button
- 11. SET Settings
- 12. Voltage
- 13. Temperature [°C]
- 14. Battery indicator (external battery)
- 15. Battery Protection Mode
- 16. MAX or ECO Mode
- 17. Temperature controll (-)
- 18. Temperature controll (+)
- 19. USB – plug

## Handling

### Connecting the device

Only connect the device to the power supply system with the supplied cable. To 12V On-board Power Supply of Vehicles For connection to the 12V/24V on-board power supply of vehicles, please use this connection cable. Use the 12V/24V socket (cigarette lighter)



### To the Electrical Grid

Use this cable to connect the device to the electrical grid.



### Switch on

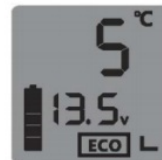
If the device is connected to the power supply, press the On/Off button to start the device.

### Settings MAX & ECO mode

- Press the SET button briefly to enter the different modes of the device.
- Then press the SET button again to switch the desired mode.



MAX: maximum power mode



ECO Energy saving mode

**Please note:** The factory setting for delivery is MAX

### Set temperature

To set the temperature in the device, press the respective temperature control to reduce the temperature or to increase the temperature. For a pantry, the recommended temperature is 17 degrees.

### Using the device without power

Please ensure an uninterrupted power supply during operation. The device is not designed for operation without power supply and can only keep its temperature to a limited time, depending on the outside temperature.

### Using the device in a car (Battery protection mode)

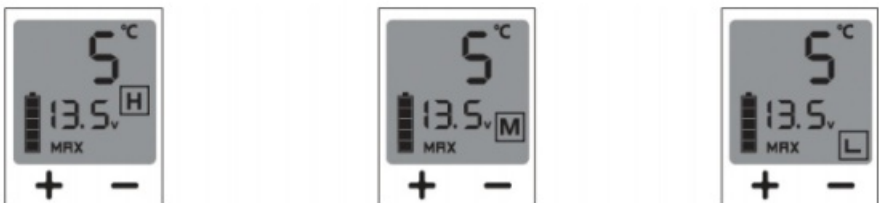
The device is equipped with a three-stage battery protection. To protect your battery, the device switches off when the battery voltage falls below the respective battery voltage.

- Use the High mode if you have connected the device to your starter battery
- Use the Medium mode if you have connected the device to your starter battery and the conditions are good (e.g. no severe cold, no severe heat, no long periods of standing)
- Use the Low mode only when using separate supply batteries to ensure vehicle starting. If this mode is used when connected to the starter battery, it may not be possible to start the vehicle.

### Adjustment:

- Press the SET button for at least 3 seconds until the currently set mode (H, M or L) flashes.
- Then press the SET button again to switch the desired mode.

- The corresponding mode will be saved as soon as the letter stops blinking.

				
Mode		Low	Medium	High
12 V	PV	9.0	10.1	11.1
	SV	10.9	11.4	12.4
24 V	PV	21.3	22.3	24.3
	SV	22.7	23.7	25.7

## Error Codes

Code	Error message	Trouble shooting
F1	Battery Protection (Over- or Undervoltage)	Please check the power supply or change the battery protection mode
F2	Fan Safety Shut Down	Please check the ventilation holes for any foreign objects or dirt. Check if the fan can spin free. Cut the device from the power supply and let it cool down for one hour. If the problem still comes up, contact the customer service
F3	Protection mode for frequently used compressor	Please contact the customer service
F4	Cooling System Overload	Cut the device from the power supply and let it cool down for one hour. If the problem still comes up, contact the customer service
F5	Thermal Protection Cooling System or Ambient Temperature	Cut the device from the power supply and let it cool down for one hour. If the problem still comes up, contact the customer service.
F6	Hardware Failure	Cut the device from the power supply and contact the customer service
F7	Temperature Sensor Short Circuit	Cut the device from the power supply and contact the customer service
F8	Temperature Sensor Open Circuit	Cut the device from the power supply and contact the customer service

## Switch off and store

- To switch off the device, press the On/Off button for at least 3 seconds and unplug the device from the power

supply system.

- When the device is not in use, please remove all food, clean the device (see chapter 4) and store it safely and dry.
- Leave the lid open a little to ensure air circulation.

## **Cleaning**

### **Safety instructions**

- Disconnect the device from the power supply system before cleaning!
- Do not immerse the device in water!
- Do not expose the device to running water

### **Proper cleaning of the device**

- Only clean the device when it is switched off
- Take out all food before cleaning
- To defrost, remove the plug in the bottom
- Wipe the inside of the appliance with a damp cloth and, if necessary, a little kitchen cleaner and rub it dry
- Leave the lid open a little bit for air circulation

### **Intended use**

The mobile device is suitable for:

- ✓ Use in Vehicles
- ✓ Camping
- ✓ Storage of food

### **The mobile device is not suitable for:**

- ✗ Storage of corrosive or solvent-containing substances
- ✗ Freezing of food products
- ✗ Use as a build-in device

### **Notes:**

- During transport, the inclination must not exceed 45° and handle the device with care.
- It is recommended to operate the device on a flat surface. The maximum tilt angle during operation must not exceed 30°.
- Your device requires good ventilation. Leave the following free space for air circulation: rear: 200 mm & side: 100 mm
- Make sure that the ventilation openings are not covered.
- The temperature on the rear panel, as well as the entire exterior surface of the cooler, may be high (especially in summer) due to heat dissipation from the condenser and compressor.
- The device must be placed in a dry and ventilated place, far from a heat source (e.g. stove, fireplace) and direct

sunlight should be avoided

### Tips for efficient use

- Use ice packs or frozen PET bottles
- Spread the ice packs between food
- Always pre-cool drinks and food
- Never leave the device open longer than necessary
- Do not place the device in direct sunlight
- Fill up the device completely (the more empty space in the interior of the device, the faster the device warms up)
- Always close the device completely
- Cold contents up, warm contents down

### Storage of food

#### **This is only a recommendation:**

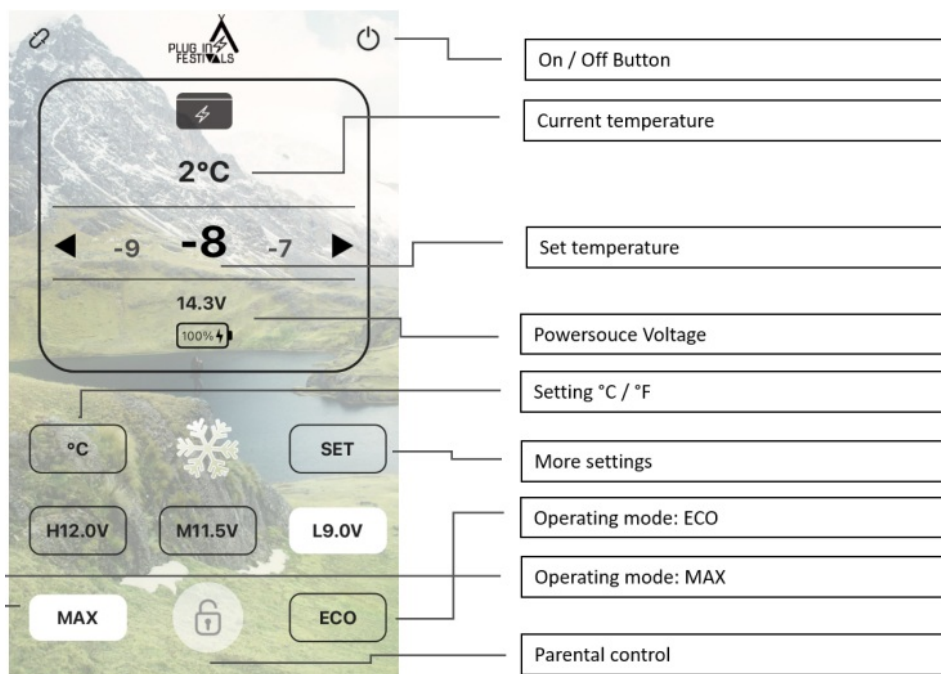
Please find out for yourself how the contents of your device can be optimally stored in order to store it as best as possible for the longest possible period so that food waste is avoided.

- Keep temperature fluctuations as low as possible
- Only open the device as often and for as long as necessary
- Store food in such a way that the air can still circulate well
- Adjust the temperature to the amount and type of food
- Food easily absorbs odors and gives off odors or aromas. Always store food covered or in closed containers or bottles

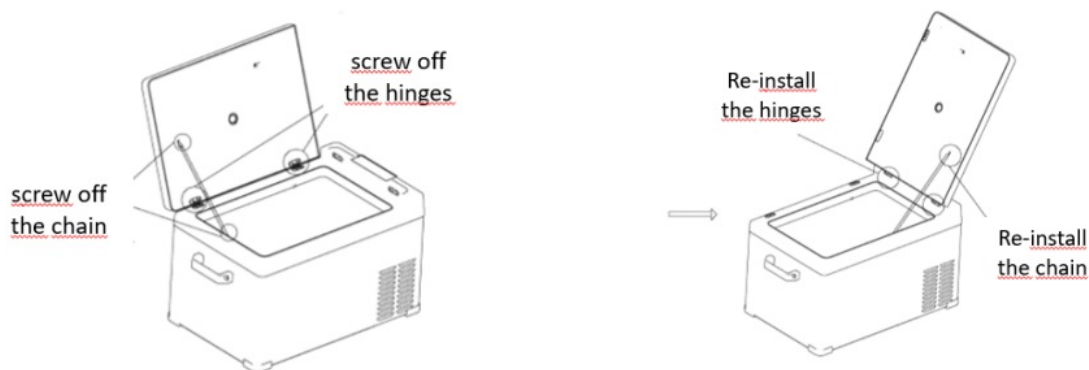
Products	Temperature
Meet, Fish	2° C
Dairy products, cold cuts	4° C
Eggs, cheese, pastries	8° C
Fruits and vegetable	10° C

### Using the smartphone wireless app

- Download the “Plug-in Festivals” app from the Appstore or Google
- Activate your BT connection on your smartphone and open the app. (For Android also activate the location services)
- Press Search & select the device found
- The word “APP” is shown on the display of the device. Press the set button to confirm. You can now conveniently monitor and adjust all settings via your smartphone.



## Lid dual opening



- Remove the chain with a screwdriver
- Take the hinges down
- Install the hinges on the other side between lip and tank
- Install the chain again on the other side between lip and tank

## Climate Class

- temperate zone: This cooling unit is intended for use at ambient temperatures from 16 °C to 32 °C
- subtropical zone: this cooling unit is intended for use at ambient temperatures from 16 °C to 38 °C
- tropical zone: this cooling unit is intended for use at ambient temperatures from 16 °C to 43 °C

## Disclaimer of warranty

The statutory warranty period shall apply. In case of a defect, please contact the manufacturer or your authorized distributor.

To process your warranty or repair request, you must send the following documents:

- Copy of the invoice with date of purchase
- Description of the error as detailed as possible

## **Spare parts**

1. Spare parts can be ordered or access to professional repairers can be made by email or telephone. Use the email address: [info@pluginfestivals.de](mailto:info@pluginfestivals.de) or the telephone number given at the end of these operating instructions.
2. Spare parts such as door handles and door hinges are available for a period of at least seven years after the last copy of a model has been placed on the market, and door seals for a period of at least ten years after the last copy of a model has been placed on the market.

## **Disposal**

If possible, place the packaging material in the recycling waste. If the device is finally taken out of operation, please contact the nearest recycling centre for information or your authorized distributor about the applicable disposal regulations.

## **Technical data**

Technical data	IceCube 25	IceCube 30	IceCube 40	IceCube 50	IceCube 65
Model	C25	C30	C40	C50	C65
Energy efficiency class new [from March 2021]	C				
Energy consumption [kWh / year] [Declared value]	48	48	49	49	49
Volume [l]	22	29	38	47	63
Ambient temperature [°C]	+ 16 bis +43				
Climate class	N, T, ST				
Sound noise level [db(A)]	45				
Rated voltage [V]		12, 24 V		, 230 V	
Rated current [A]	5,5 A @12 V 2,8 A @24 V 0,6-1,5 A @ 230 V				
Rated power ECO-Mode [W]	ca. 33 W				
Rated power MAX-Mode [W]	ca. 66 W				
Temperature range [°C]	– 20 bis + 20				
USB-Port	5 V, 2 A				
Refrigerant charging [g]	24	40	40	40	40
Refrigerant type	R1234 yf				
Product dimension (LxBxH) mm	658 x 368 x 310	658 x 368 x 360	658 x 368 x 427	658 x 368 x 497	658 x 368 x 672
Weight [kg]	13,5	14,6	15,4	16,3	20

At ambient temperatures above +29 degrees the minimum temperature cannot be reached Further technical information according to Regulation (EU) 2019/2016 can be found at the following web link:

<https://pluginfestivals.de/wp-content/uploads/2020/06/Datenblatt.png>

**Compressor:** GMCC DE25M1P-B, Anhui Meizhi Compressor Co. Ltd.

### Customer Service

For further questions – please contact our customer service: Plug-in Festivals GmbH Industriestraße 21 82194 Gröbenzell

- [info@pluginfestivals.de](mailto:info@pluginfestivals.de)
- 08142-4219710

### EC Declaration of Conformity:

We, the company Plug-in Festivals GmbH, Industriestraße 21, 82194 Gröbenzell, declare under our sole responsibility that the above-mentioned products meet the basic requirements of the EU directives listed below – and all subsequent changes: 2014/35 / EU, 2014/30 / EU, 2011/65 / EU, 2009/125 / EU, 2014/53 / EU, 1935/2004 and Regulation (EU) 2019/2019 and (EU) 2019/2016

### Applied standards:


EN IEC 55014-1:2021, EN IEC 55014-2:2021, EN 55032:2015+A11:2020, EN 55035:2017+A11:2020, EN IEC 61000-3-2:2019+A1:2021, EN 61000-3-3:2013+A1:2019, EN 50498:2010, EN 60335-1: 2012 + A11: 2014 + A13 : 2017 + A1 : 2019 + A14: 2019 + A2: 2019 + A15: 2021, EN 60335-2-24 : 2010 + A1 :2019 + A2 :2019 + A11: 2020, EN 62233:2008, IEC 62321, EN 300 328 V2.2.2, AFPS GS 2014:01 PAK

**Documentation representative:** Sebastian Vitz Plug-in Festivals GmbH [info@pluginfestivals.de](mailto:info@pluginfestivals.de)



Sebastian Vitz

## Documents / Resources

	<p><a href="#">PLUG IN FESTIVALS IceCube 25 Compressor Cooler</a> [pdf] Instruction Manual IceCube 25 Compressor Cooler, IceCube 25, Compressor Cooler, Cooler</p>
---	--

## References

- [User Manual](#)