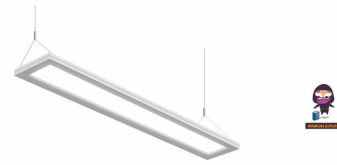


PLT PremiumSpec Direct and Indirect Selectable LED Linear Fixture



PLT PremiumSpec Direct and Indirect Selectable LED Linear Fixture Installation Guide

[Home](#) » [PLT](#) » PLT PremiumSpec Direct and Indirect Selectable LED Linear Fixture Installation Guide 

Contents

- [1 PLT PremiumSpec Direct and Indirect Selectable LED Linear Fixture](#)
- [2 Parts List](#)
- [3 Installation Instructions](#)
- [4 Connecting Fixtures](#)
- [5 WIRING DIAGRAM](#)
- [6 Documents / Resources](#)
 - [6.1 References](#)
- [7 Related Posts](#)



PLT PremiumSpec Direct and Indirect Selectable LED Linear Fixture



WARNING

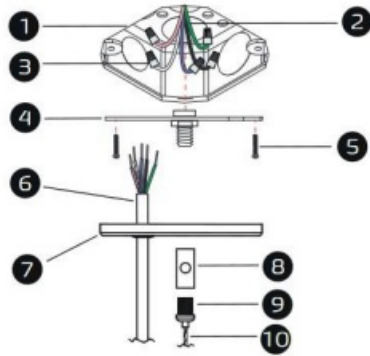
- To reduce the risk of fire and overheating, make sure all connections are tight.

CAUTION

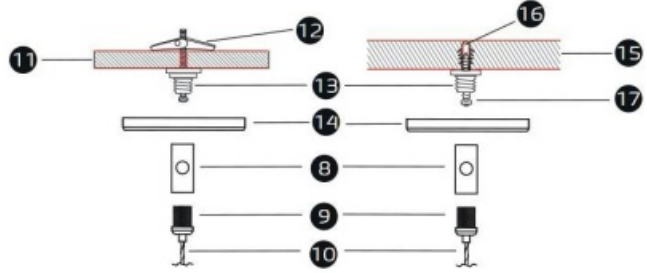
- Do not install in wet locations. For dry and damp use only.
- Do not cover the fixture with heat insulation gaskets or similar materials.
- The maximum connection of each input line is
 - 40 ft. at 120VAC
 - 80 ft. at 230VAC
 - 100 ft. at 277VAC

Drywall Ceiling

Power Feed

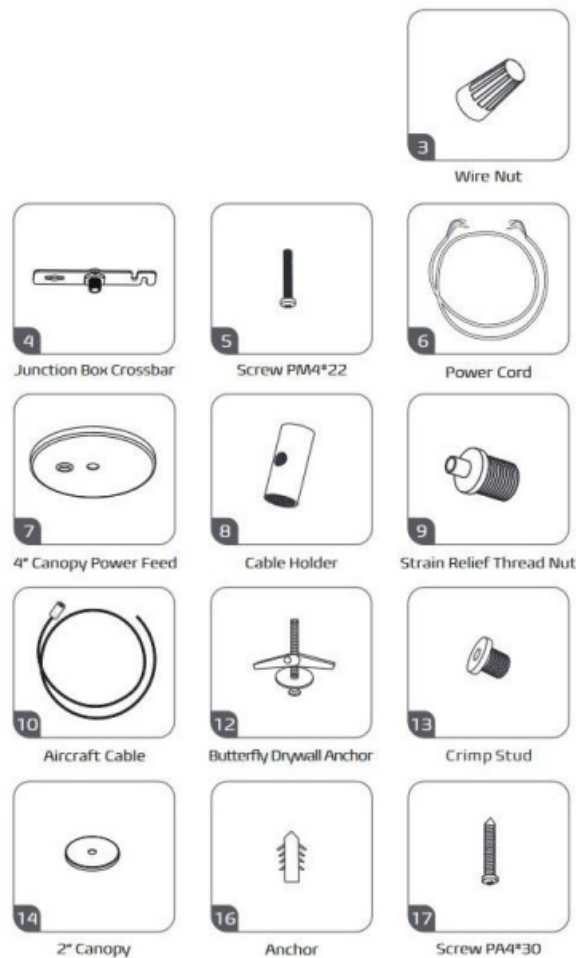


Non Power Suspension



Parts List

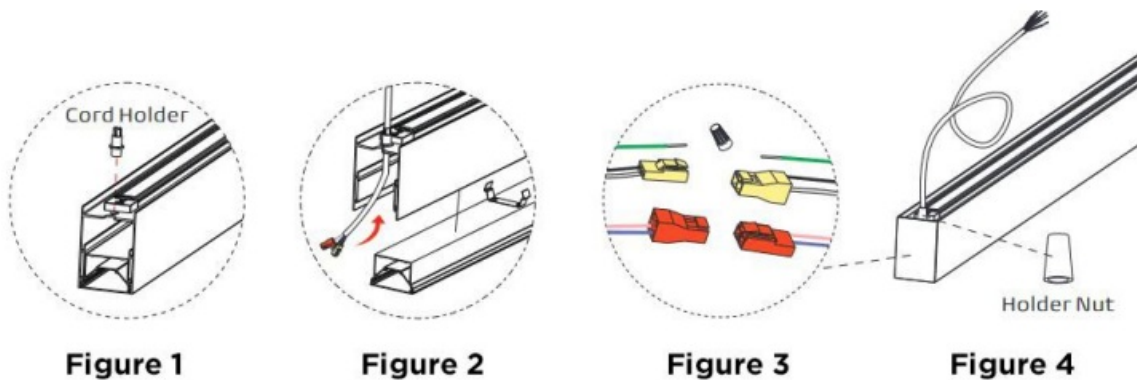
1. 4" Octagonal Junction Box (by others)
2. Power Cord (by others)
3. Wire Nut
4. Junction Box Crossbar
5. Screw PM4*22
6. Power Cord
7. 4" Power Canopy Kit
8. Cable Holder
9. Strain Relief Thread Nut
10. Aircraft Cable
11. Drywall Ceiling (by others)
12. Butterfly Drywall anchor
13. Crimp Stud
14. 2" Canopy
15. Solid Ceiling (by others)
16. Anchor
17. Screw PA4*30



Installation Instructions

Pre-Installation – Assemble the Power Cord

1. Take off the end cap. Insert the cord holder into the power cord location as shown. (Figure 1)
2. Take off the LeD module and thread the power cord into the cord holder as shown. (Figure 2)
3. Wiring must connect connectors with corresponding colors as shown. (Figure 3) Connect the power cord with the holder nut and reattach the module and end cap. (Figure 4)

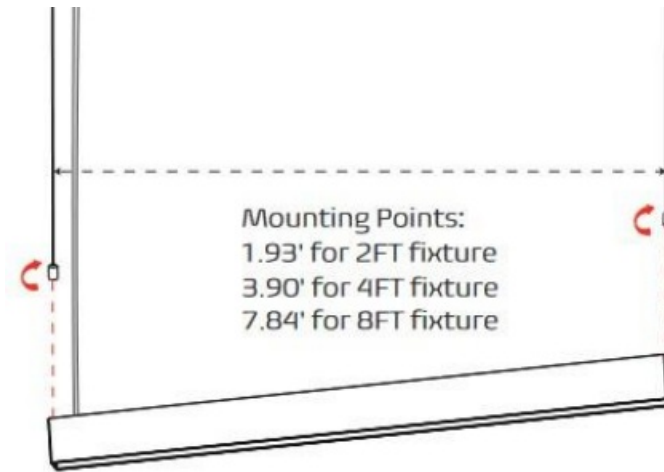


Installation

1. Hang the Luminaire

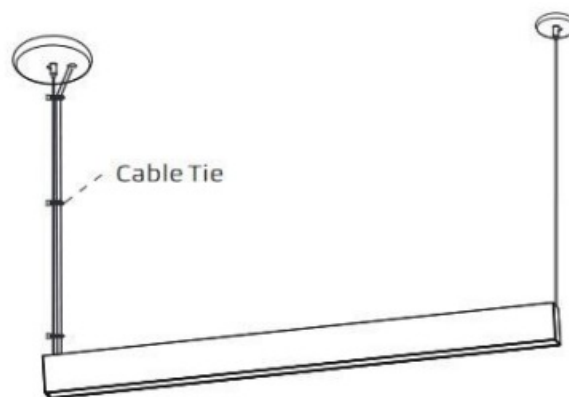
- Screw both bottom parts of the aircraft cables clockwise and secure them on the top of the housing.
- **NOTE:** The luminaire can be raised by pulling the cable through the gripper and can be lowered by

depressing the top cylinder on the gripper which pulls the luminaire down.



2. Complete

- Use the cable tie to secure it against the aircraft cable.



Connecting Multiple Luminaries (Optional) Joiner



"—" Joiner

Before Connecting – Disassemble Luminaries

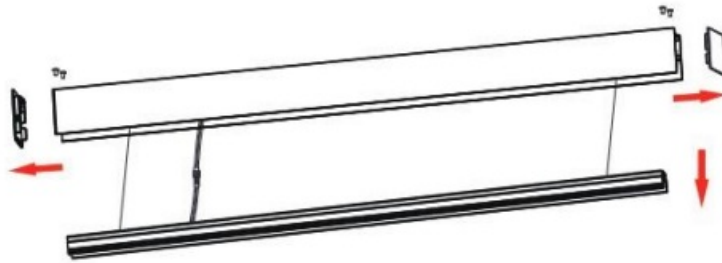
• Start of run (SoR)

- Remove the end cap of the non-powered end and take the LED module out.



• Middle of run (more)

- Remove both end caps and take the LED module out.



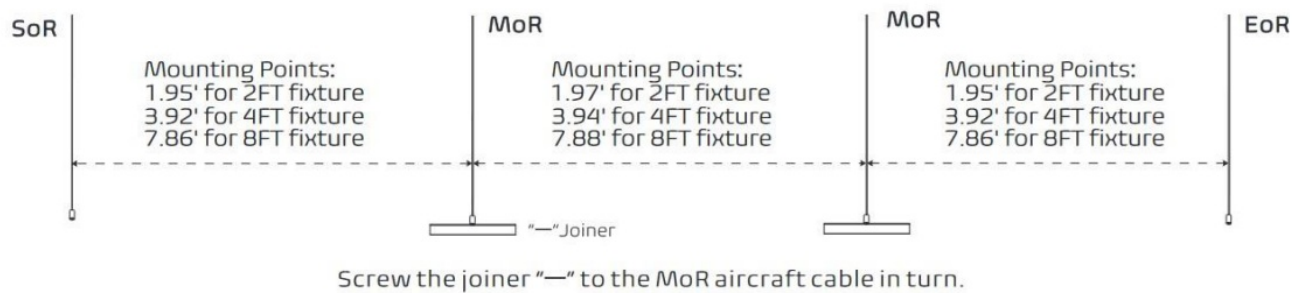
- **End of run (EoR)**

- Remove the end cap of the non-powered end and take the LED module out.



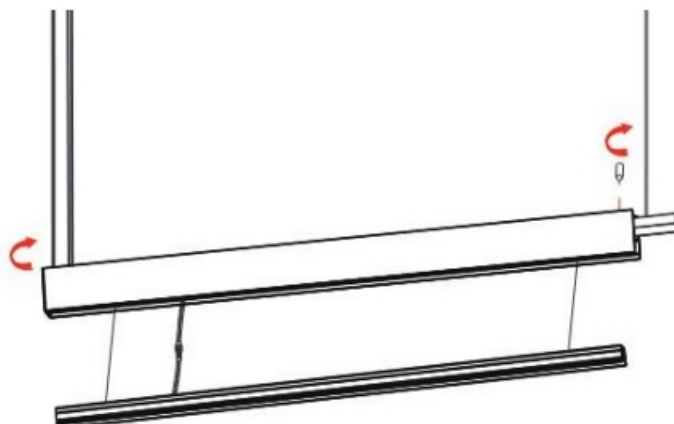
Connecting Fixtures

1. Install joiners



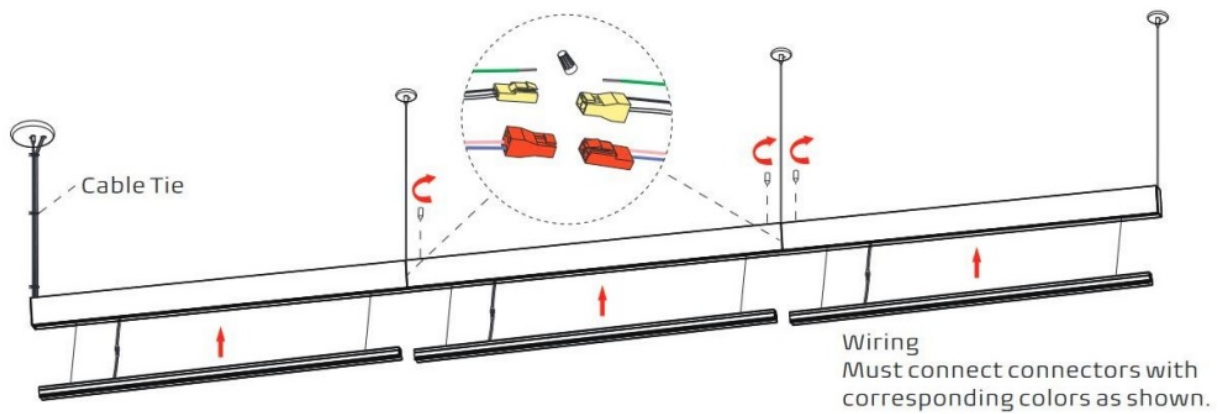
2. Hang luminaire and wiring – SoR

- **a.** Adjust the height of the luminaire. The Luminaire can be raised by pulling the cable through the gripper and can be lowered by depressing the top cylinder on the gripper which pulls the luminaire down.
- **b.** Insert the joiner “—” into the luminaire from one side and fix with screws.
- **c.** Screw both bottom parts of the aircraft cables clockwise and secure them on the top of the housing.

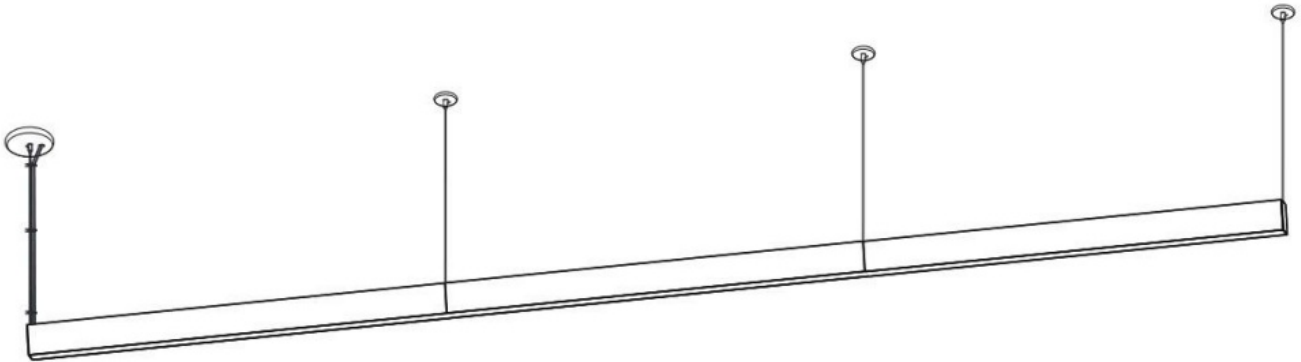


3. Repeat hang and join steps – MoR to EoR

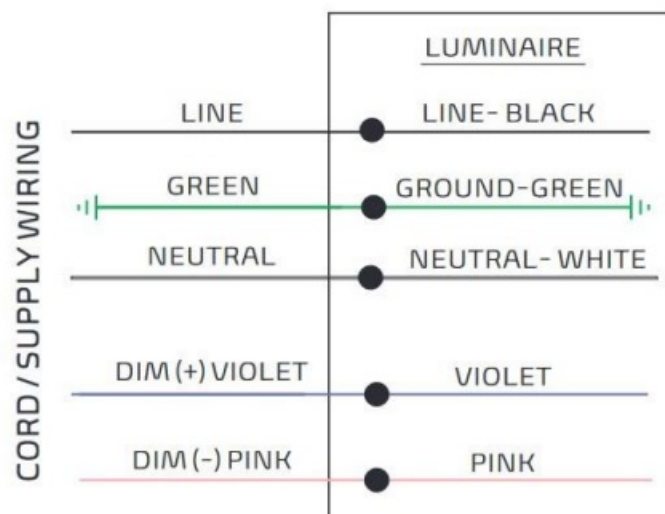
- **a.** Zip tie the power cord and aircraft suspension cable with the cable tie.
- **b.** Connect the quick connectors.
- **c.** Insert all the LED modules into the housing from SoR to EoR.



4. Complete



WIRING DIAGRAM



- Please isolate the two dimming wires by the P2 terminal individually if not using dimming
- MUsI connects wires with corresponding colors as shown.

WARNING

- Before installing, servicing, or performing routine maintenance on this equipment, follow these general precautions.
- To reduce the risk of death, personal injury, or property damage from fire, electric shock, falling parts, cuts/abrasions, and other hazards, read all warnings and instructions included with and on the fixture box and all fixture labels.

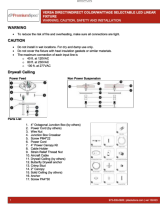
- Proper grounding is required to ensure safety.
- Power must be turned off at the breaker before installation or maintenance.
- This product must be installed per the applicable installation code by a person familiar with the construction and operation of the product and the hazards involved.
- Wear gloves and eye protection at all times while installing, servicing, or performing maintenance on the luminaire, and avoid direct eye exposure to the light source while it is on.
- To prevent wiring damage or abrasion, do not expose wiring to the edges of sheet metal or other sharp objects.
- Do not install damaged products. Inspect the luminaire for damage that may have occurred during transit. If damaged, contact the manufacturer immediately.
- These instructions do not purport to cover all details or variations in equipment nor to provide every possible contingency to meet in connection with installation, operation, or maintenance. Should further information be desired or should particular problems arise that are not covered sufficiently for the purchaser's or owner's purposes, contact the manufacturer.

CONTACT

- [972-535-0926](tel:972-535-0926)
- pitsolutions.com.
- ver 102423

VERSA DIRECT/INDIRECT COLOR/WATTAGE SELECTABLE LED LINEAR FIXTURE

Documents / Resources

	<p>PLT PremiumSpec Direct and Indirect Selectable LED Linear Fixture [pdf] Installation Guide PremiumSpec Direct and Indirect Selectable LED Linear Fixture, PremiumSpec, Direct and Indirect Selectable LED Linear Fixture, Indirect Selectable LED Linear Fixture, Selectable LED Linear Fixture, Linear Fixture</p>
---	--

References

- [User Manual](#)

[Manuals+](#), [Privacy Policy](#)

This website is an independent publication and is neither affiliated with nor endorsed by any of the trademark owners. The "Bluetooth®" word mark and logos are registered trademarks owned by Bluetooth SIG, Inc. The "Wi-Fi®" word mark and logos are registered trademarks owned by the Wi-Fi Alliance. Any use of these marks on this website does not imply any affiliation with or endorsement.