



# PLT SOLUTIONS Selectable LED Track Lighting Instruction Manual

[Home](#) » [PLT SOLUTIONS](#) » **PLT SOLUTIONS Selectable LED Track Lighting Instruction Manual** 

## Contents

- [1 PLT SOLUTIONS Selectable LED Track Lighting Instruction Manual](#)
- [2 WARNING](#)
- [3 WARNING](#)
- [4 CAUTION](#)
- [5 Installation Instructions – Track](#)
- [6 Installation Instructions – Drilling the Track](#)
- [7 Installation Instructions – Cutting the Track](#)
- [8 Installation Instructions – Track Heads](#)
- [9 Read More About This Manual & Download PDF:](#)
- [10 Documents / Resources](#)
  - [10.1 References](#)
- [11 Related Posts](#)

## PLT SOLUTIONS Selectable LED Track Lighting Instruction Manual

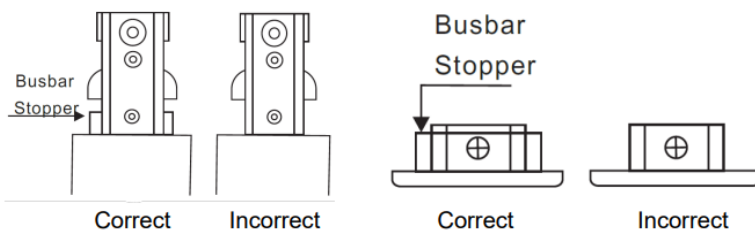


### **WARNING**

- Before installing, servicing, or performing routine maintenance upon this equipment, follow these general
- To reduce the risk of death, personal injury, or property damage from fire, electric shock, falling parts, cuts/abrasions, and other hazards, read all warnings and instructions included with and on the fixture box and all fixture
- Proper grounding is required to ensure
- Power must be turned off at the breaker before installation or
- Installation, service, and maintenance of luminaires should be performed by a qualified licensed
- Wear gloves and eye protection at all times while installing, servicing, or performing maintenance on the luminaire, and avoid direct eye exposure to the light source while it is
- Do not install damaged. Inspect luminaire for damage that may have occurred during transit. If damaged, contact the manufacturer immediately.
- These instructions do not purport to cover all details or variations in equipment nor to provide every possible contingency to meet in connection with installation, operation, or maintenance. Should further information be desired or should particular problems arise which are not covered sufficiently for the purchaser's or owner's purposes, contact the

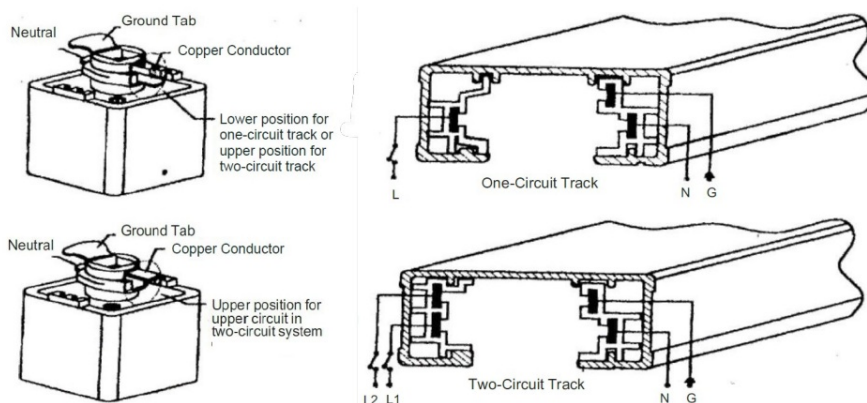
### **WARNING**

- If the track is suspended from the ceiling, a Pendant Assembly Kit is
- If the track is joined with other tracks, they must be reinforced where the track and connector
- To avoid the risk of fire or short, do not use the connectors and end cap without busbar stoppers.



## CAUTION

- Do not install this track in damp or wet
- Do not cut any track sections unless you have the proper tool for that
- Do not install any part of a track system less than 5 feet above the
- Do not install any fixture assembly closer than 6 inches from curtains, drapes or other combustible
- Switch off the power at the electrical panel before adding to or changing the configuration of the
- Do not attempt to energize anything other than the track heads on the track, including power tools, extension cords or
- Do not connect a one-circuit track to more than one branch circuit. Use two-circuit track to independently control different track heads on the same
- Before installing the track heads, make sure the copper conductors are in the desired
- To use the track heads on a one-circuit track, the copper conductor on the top of the track head must be in the lower position. For two-circuit lighting, the copper conductor should be in the lower position for one-circuit and raised for the second To position the conductor, gently push down or pull up.
- Two-circuit track systems are designed for use when two separately controlled circuits are needed on one section of Each circuit is rated for 2400 watts and will allow you to control two individual sets of fixtures.
- When mounted on a two-circuit track, some track head conductors can be positioned up while others are positioned down to achieve use of both
- Two-circuit track systems are designed for use when two separately controlled circuits are needed on one section of Each circuit is rated for 2400 watts and will allow you to control two individual sets of fixtures.

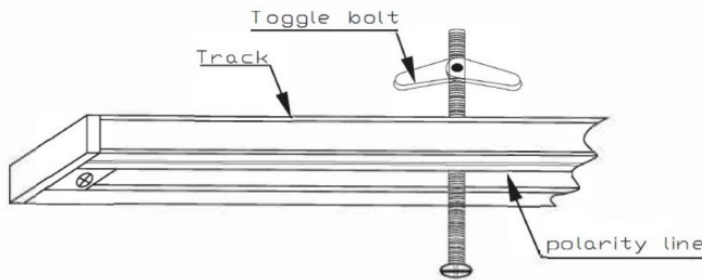


## Installation Instructions – Track

1. Place the track over the outlet box and mark the position of the track's mounting holes on the mounting
2. Drill 5/8" mounting Refer to the Installation Instructions – Cutting the Track for more details.
3. The underside of the track faces the mounting surface and the slotted side of the track faces out to

accept the track heads.

4. Install the track to the mounting surface using the provided toggle bolts. If mounting to a wood surface, use #10 wood screws (not included).



### Installation Instructions – Drilling the Track

1. Track must be drilled prior to installation to the mounting. Do not attempt to drill any track section while mounted and connected to power.
2. Make sure the track is firmly secured before
3. Use a maximum 1/4" drill bit and drill at locations as follows:
  1. A single section of track that is 4 feet or less in length is to be provided with one mounting opening spaced a maximum of 6 inches from each end of track. Additional openings may be provided.
  2. A single section of track that is greater than 4 feet in length is to be provided with one mounting opening spaced a maximum of 12 inches from each end of track section with additional openings being provided a minimum of every 4 feet along the length of the track section.
4. Remove all burrs after
5. Any standard bolt may be inserted to secure the track to any drywall foldout locking nut or hardware locking the track to a Pendant

### Installation Instructions – Cutting the Track

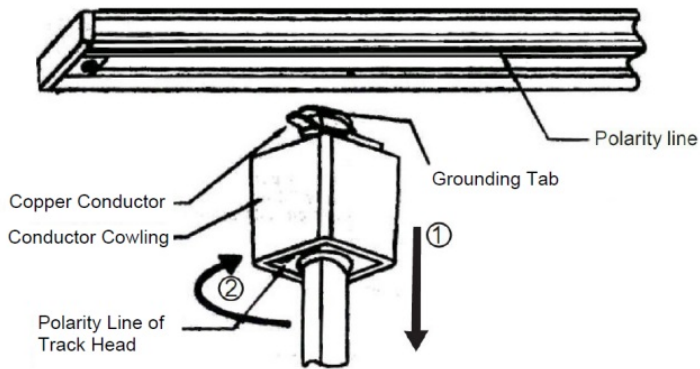
1. Track must be cut prior to installation to the mounting. Do not attempt to cut any track section while mounted and connected to power.
2. Make sure the track is firmly secured before
3. Use a circular saw or hand saw with fine teeth to cut the track. If any burrs develop, remove the burrs using a metal
4. Pull all copper conductors 1/4" out of the cut end of the track. Cut the conductors using wire cutters or shears.
5. Slide the conductors back into the track leaving a minimum of 1/4" space between the end of the track and the start of the copper
6. Cut back a maximum of 1/3" or minimum of 1/5" of busbar insulation.
7. Install a power connector or end cap to the cut end of the

### Installation Instructions – Track Heads

- Turn power off from the electrical panel before starting installation.
- Pull down the conductor cowling and insert the copper conductor into the
- Rotate 90° and lock into


o NOTE: The polarity line on the track head must align with polarity line on the track.

- To remove the track head, pull the conductor cowling down and rotate the track head 90°.



***Read More About This Manual & Download PDF:***

## Documents / Resources

	<p><a href="#">PLT SOLUTIONS Selectable LED Track Lighting</a> [pdf] Instruction Manual PLT-12480, Selectable LED Track Lighting, Selectable Lighting, LED Track Lighting, Lighting</p>
--	---

## References

-  [PLT Solutions](#)