



# PLT SOLUTIONS RGBW Strip 5m IP20 Light with 24 Keys Key IR Controller User Manual

[Home](#) » [PLT SOLUTIONS](#) » [PLT SOLUTIONS RGBW Strip 5m IP20 Light with 24 Keys Key IR Controller User Manual](#) 

## Contents

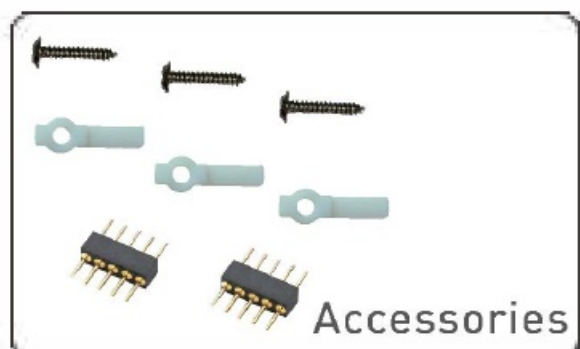
- [1 PLT SOLUTIONS RGBW Strip 5m IP20 Light with 24 Keys Key IR Controller](#)
- [2 Packing list](#)
- [3 Specifications](#)
- [4 Wiring](#)
- [5 Installation Instructions](#)
- [6 Documents / Resources](#)
- [7 Related Posts](#)



**PLT SOLUTIONS RGBW Strip 5m IP20 Light with 24 Keys Key IR Controller**



## Packing list



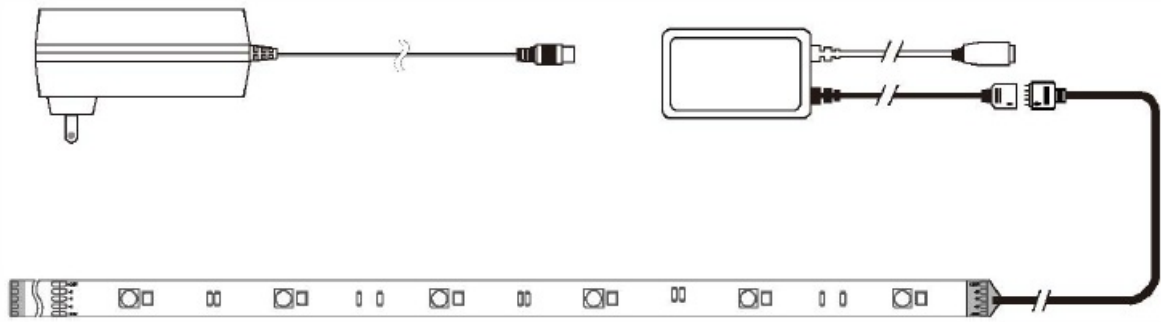
- ULListed24V/1A24Wadapterx1

- 24 Key IR Remote and Receiver x 1
- 16.4ft 240pcs RGB+W LED strip x 1
- Alcohol Prep Pad x 1
- User Manual x 1
- **Accessories**
  - Screws x 5
  - Clips x 5
  - 5- PINx2

## Specifications

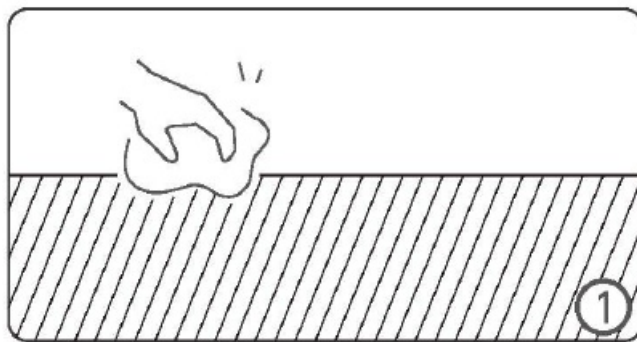
Length	16.4ft(5m)
Rated Power(LED Strip)	24V/20W
LED	120 x 5050 + 120 x 2835 SMD
Cutting Unit	Every 9.84in(250mm)
Dimmer	24 Key IR controller
Adapter	AC100-240V, 50-60Hz
Rated Power(Adapter)	24V1A/24W

## Wiring

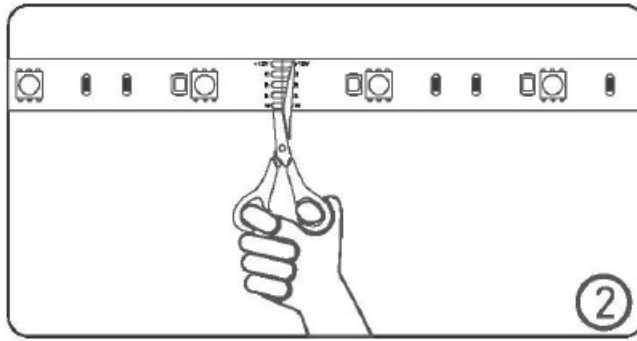


## Installation Instructions

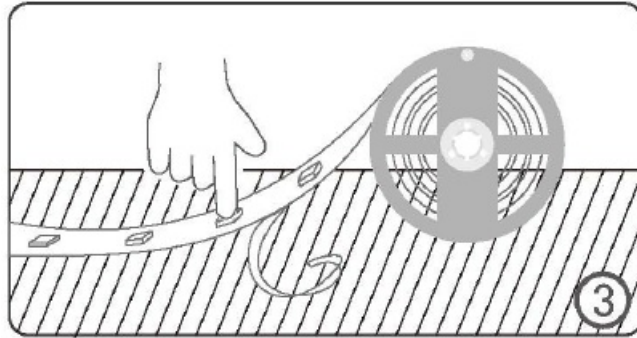
1. Open the package and check if all the components are complete, then unrolling the led strip, and connect the LED strip to controller and driver, then light it up to check if all parts are in good condition or not. The connect method should refer to the wiring diagram.



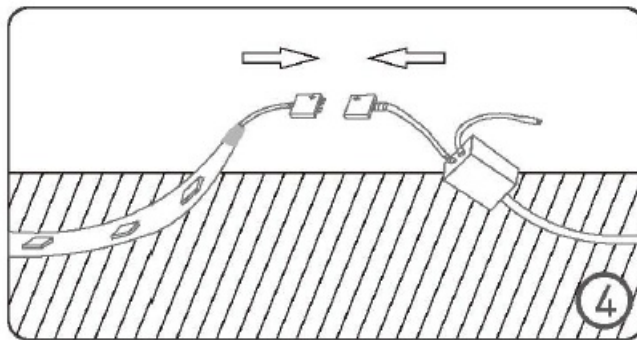
2. Using alcohol prep pad to clean the surface on the installation place, make sure it's clean, dry and smooth, Or it will reduce the adhesiveness of the back tape. Remember the back tape could be only used one time. The LED strip will fall off if the surface is not in good condition or the back tape is reused.



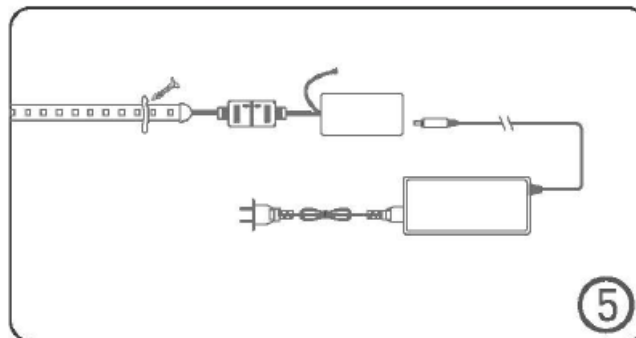
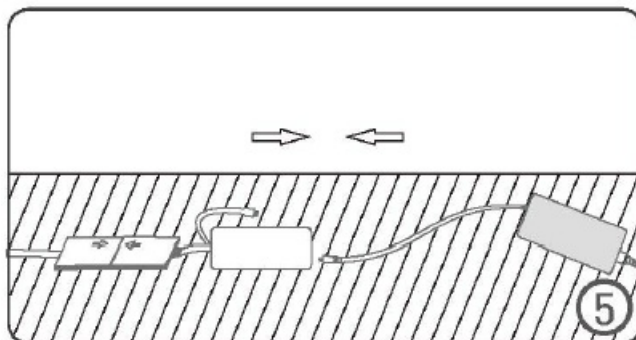
3. Measure the length required on the surface and cut the LED strip accordingly. Once the LED strip is cut, both ends will need separate power sources and connectors[Not included in package].



4. Tear off the back tape and paste the strip to the surface smoothly and correctly. Connect the LED strip to controller and driver based on the diagram.



5. Using 3M tape to fix the receiver controller, using clips to fix the LED strip accordingly.




1. Do not use at outdoor or underwater.
2. Disconnect the power before installation.
3. The operating temperature is -10° C to+ 40 ° C, please make sure the installation surface should be less than 40°C.
4. Do not use products close to flammable materials.
5. The 24W adapter is only for 16.4ft/5m LED strip, do not afford to another LED strip or it would be overloaded.
6. Do not power on the LED strip while it's rolled, or it will be overheated and damaged.
7. Do not power on the LED strip by another power source, like 120VAC or 120VDC, the electronic components will be damaged.
8. Keep the components from children.

### Customer Service

We are looking forward to providing best products and service for you, and paying attention to your feedback.

### Documents / Resources

	<p><a href="#">PLT SOLUTIONS RGBW Strip 5m IP20 Light with 24 Keys Key IR Controller</a> [pdf] User Manual</p> <p>RGBW Strip 5m IP20 Light with 24 Keys Key IR Controller, RGBW Strip, 5m IP20 Light with 24 Keys Key IR Controller, 24 Keys Key IR Controller, 5m IP20 Light, Light</p>
--	--

[Manuals+](#).