



## PLT SOLUTIONS PLTS-12258 RGBW Color Changing LED Tape Light/Strip Light Kit Instruction Manual

[Home](#) » [PLT SOLUTIONS](#) » [PLT SOLUTIONS PLTS-12258 RGBW Color Changing LED Tape Light/Strip Light Kit Instruction Manual](#) 

### Contents

- [1 PLT SOLUTIONS PLTS-12258 RGBW Color Changing LED Tape Light/Strip Light Kit](#)
- [2 Package Contents](#)
- [3 Installation Instructions](#)
- [4 Wiring Diagram](#)
- [5 Documents / Resources](#)
- [6 Related Posts](#)



**PLT SOLUTIONS PLTS-12258 RGBW Color Changing LED Tape Light/Strip Light Kit**



## **WARNING**

- Before installing, servicing, or performing routine maintenance upon this equipment, follow these general precautions.
- To reduce the risk of death, personal injury, or property damage from fire, electric shock, falling parts, cuts/abrasions, and other hazards, read all warnings and instructions included with and on the tape light box and all tape light labels.
- Proper grounding is required to ensure safety.
- Power must be turned off at the breaker before installation or maintenance.
- Installation, service, and maintenance of tape lights should be performed by a qualified licensed electrician.
- Wear gloves and eye protection at all times while installing, servicing, or performing maintenance on tape light, and avoid direct eye exposure to the light source while it is on.
- Do not install damaged product. Inspect tape light for damage that may have occurred during transit. If damaged, contact the manufacturer immediately.
- These instructions do not purport to cover all details or variations in equipment nor to provide every possible contingency to meet in connection with installation, operation, or maintenance. Should further information be desired or should particular problems arise which are not covered sufficiently for the purchaser's or owner's purposes, contact the manufacturer.

## **CAUTION**

- Install this product in accordance with country, regional and local laws and regulations.
- If unsure about the installation or maintenance of this product, consult a qualified electrician and check the local electrical code.
- Verify the supply voltage is correct by comparing it with the product label.
- Do not use the product close to flammable materials.

## **WARNING**

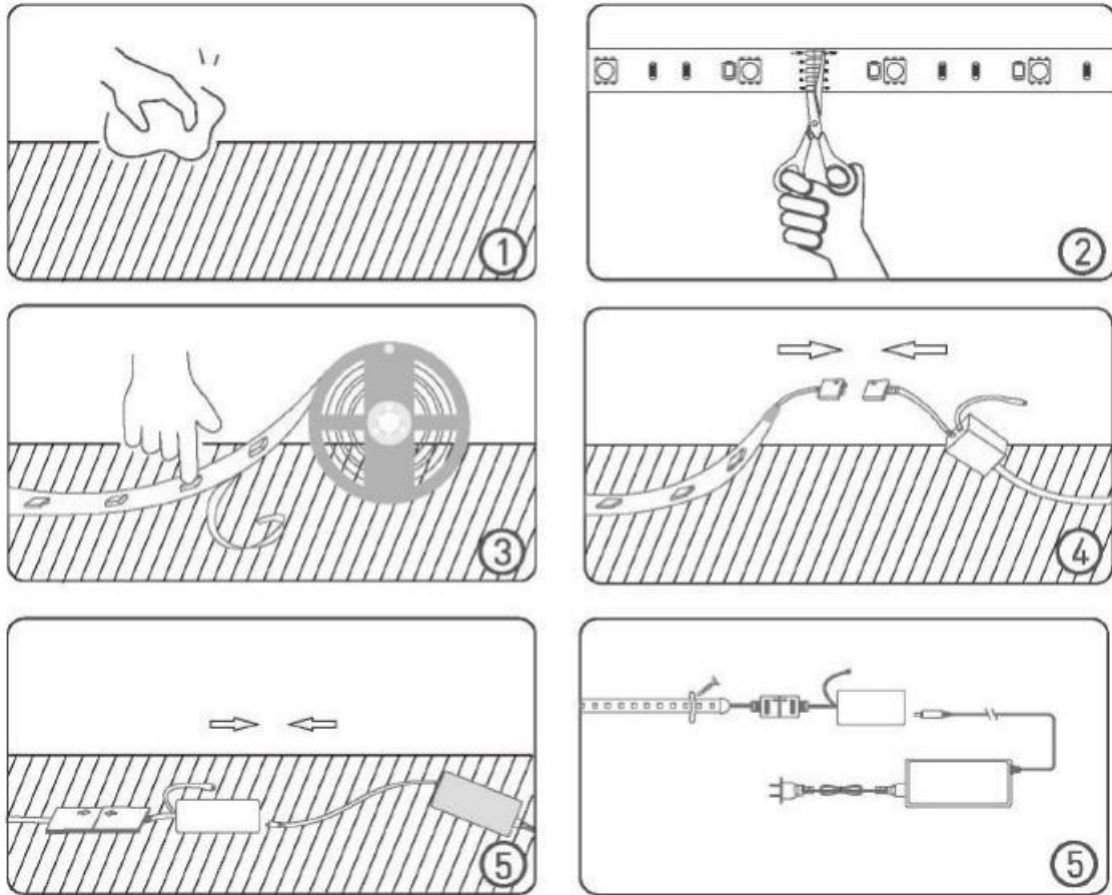
- Do not use outdoors or under water.
- Disconnect the power before installation.
- The operating temperature is -10° C to+ 40° C (14° F to 104° F). The installation surface should be less than 40° C (104° F).
- The 24W adapter can only power one 16.4ft (5m) strip light. Connecting additional strip lights will cause the adapter to overload.
- Do not plug in the strip light while it is still rolled on the spool as this can damage and overheat the strip.
- Using this LED strip light with a power adapter that uses a different voltage can damage the electronic components.
- Keep away from children.

## Package Contents



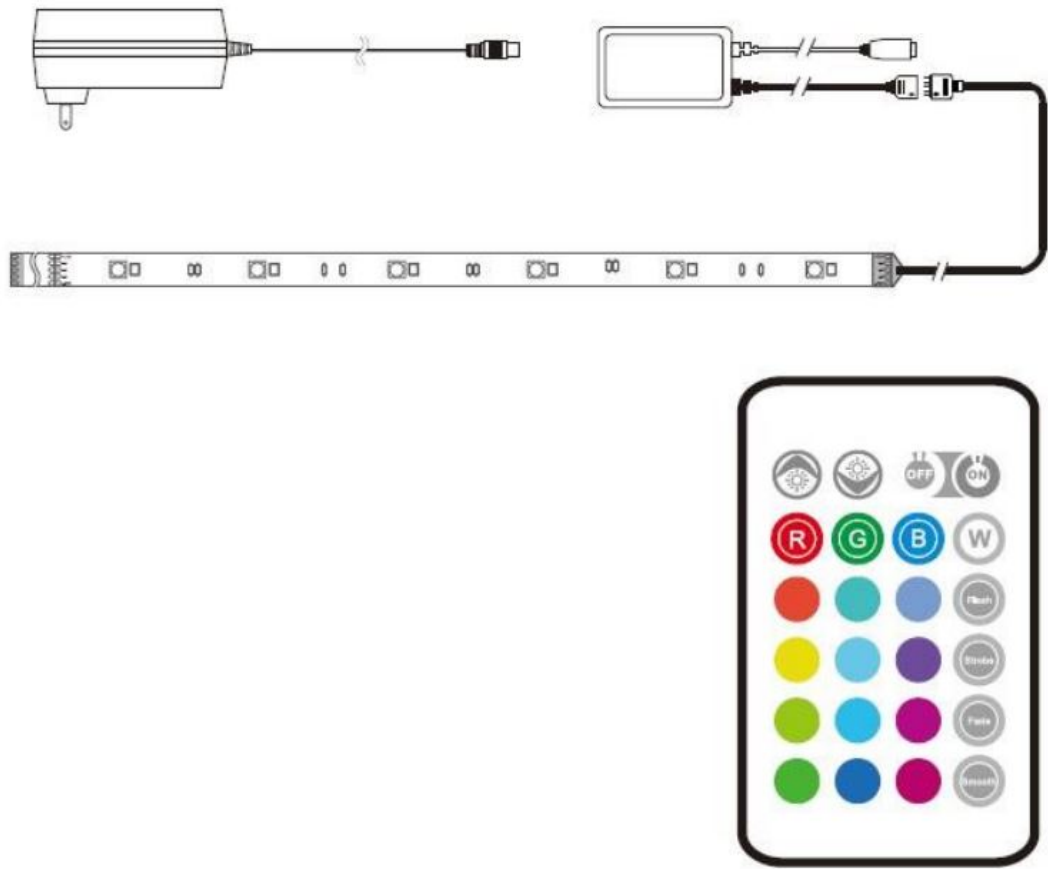
- UL list,ed 24V/1 A 24W adapter x 1
- 24 Key IR Remote aind Receiver x 1
- 16.4ft 240pcs RGB+W IED strip x 1
- Ale oil ol Prep Pad x 1
- User Manual x 1
- Acc,essorie,s
- Screws x 5
- Cliips x 5
- 5-PINx2

## Installation Instructions




1. Open the package and check to see if all components are there. Then unroll the LED strip, Connect the strip to the controller and driver. Plug in the power supply to ensure everything is working. Refer to the wiring diagram as needed.
2. Using the included alcohol prep pad, clean the the installation surface. The surface must be dry and smooth or the adhesive backing will not properly stick. NOTE: the adhesive backing can only be used once. The tape light will not adhere to the surface if it is dirty or if the backing is reused. (Fig. 1)
3. Measure out the required length and cut the strip on the notated cutting marks. (Fig. 2) Once the LED strip is cut, both ends will need separate power sources and connectors [Not included in package].
4. Temove the paper backing from the adhesive. Press the strip firmly to the surface (Fig. 3). Connect the strip to the controller and driver, referring to the wiring diagram as needed. (Fig 4 & 5)
5. Use 3M tape to attach the receiver (controller) to the surface. Use the included clips to secure the LED strip as needed.

Wiring Diagram



972-535-0926 | [pltsolutions.com](http://pltsolutions.com) lver 012723

Documents / Resources

	<p><a href="#">PLT SOLUTIONS PLTS-12258 RGBW Color Changing LED Tape Light/Strip Light Kit</a> [pdf]   nstruction Manual</p> <p>PLTS-12258 RGBW Color Changing LED Tape Light Strip Light Kit, PLTS-12258, RGBW Color Changing LED Tape Light Strip Light Kit, Light Strip Light Kit, Strip Light Kit</p>
---	---