



PLT SOLUTIONS PLTS-12255 LED Strip Light Kit with Remote Instruction Manual

[Home](#) » [PLT SOLUTIONS](#) » PLT SOLUTIONS PLTS-12255 LED Strip Light Kit with Remote Instruction Manual 

Contents

- [1 PLT SOLUTIONS PLTS-12255 LED Strip Light Kit with Remote](#)
- [2 SAFETY INSTRUCTION](#)
- [3 Package Contents](#)
- [4 Installation Instructions](#)
- [5 Wiring Diagram](#)
- [6 Contact Information](#)
- [7 Documents / Resources](#)
- [8 Related Posts](#)



PLT SOLUTIONS PLTS-12255 LED Strip Light Kit with Remote



SAFETY INSTRUCTION

WARNING

- Before installing, servicing, or performing routine maintenance on this equipment, follow these general precautions.
- To reduce the risk of death, personal injury, or property damage from fire, electric shock, falling parts, cuts/abrasions, and other hazards, read all warnings and instructions included with and on the tape light box and all tape light labels.
- Proper grounding is required to ensure safety.
- Power must be turned off at the breaker before installation or maintenance.
- Installation, service, and maintenance of luminaires should be performed by a qualified licensed electrician.
- Wear gloves and eye protection at all times while installing, servicing, or performing maintenance on the tape light, and avoid direct eye exposure to the light source while it is on.
- Do not install the damaged products. Inspect the tape light for damage that may have occurred during transit. If damaged, contact the manufacturer immediately.
- These instructions do not purport to cover all details or variations in equipment nor to provide every possible contingency to meet in connection with installation, operation, or maintenance. Should further information be desired or should particular problems arise which are not covered sufficiently for the purchaser's or owner's purposes, contact the manufacturer.

CAUTION

- Install this product in accordance with country, regional, and local laws and regulations.
- If unsure about the installation or maintenance of this product, consult a qualified electrician and check the

local electrical code.

- Verify the supply voltage is correct by comparing it with the product label.
- Do not use the product close to flammable materials.

WARNING

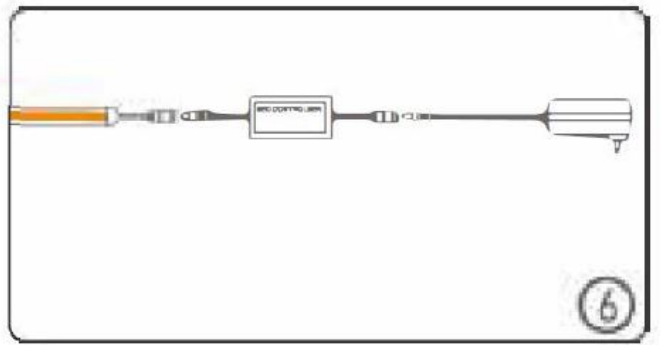
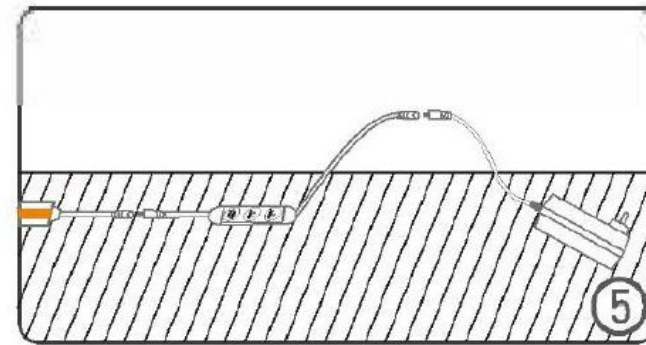
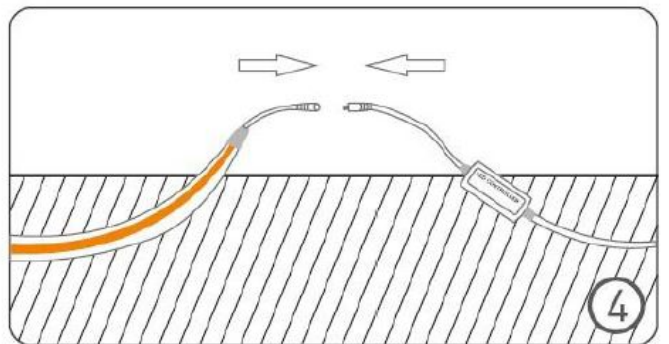
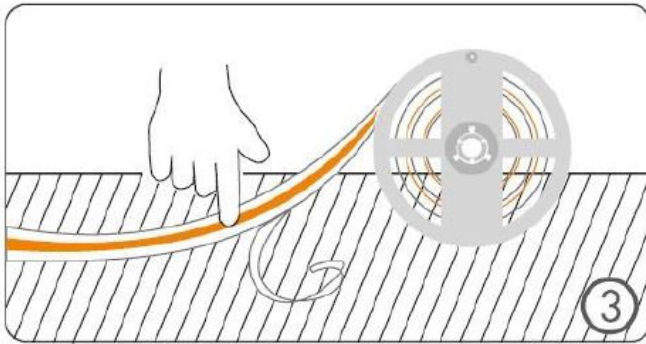
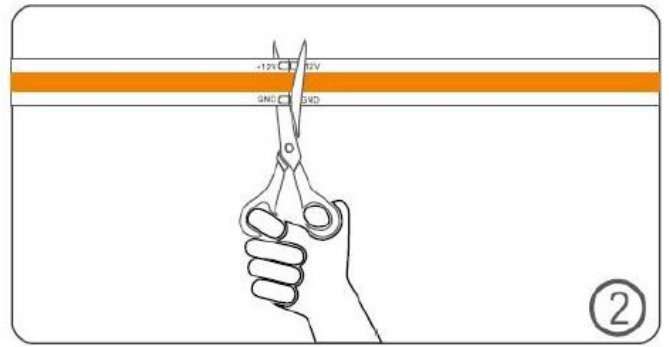
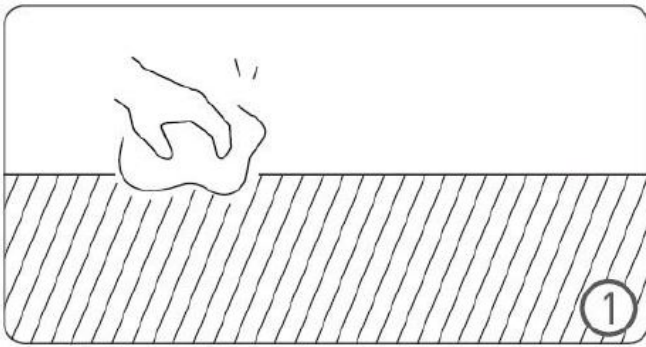
- Do not use it outdoors or underwater.
- Disconnect the power before installation.
- The operating temperature is -10°C to +40°C (14°F to 104°F). The installation surface should be less than 40°C (104°F).
- The 24W adapter can only power one 16.4ft (5m) strip light. Connecting additional strip lights will cause the adapter to overload.
- Do not plug in the strip light while it is still rolled on the spool as this can damage and overheat the strip.
- Using this LED strip light with a power adapter that uses a different voltage can damage the electronic components.
- Keep away from children.

Package Contents



- UL listed Plug-in 36W adapter x 1
- RF controller with 11 key remotes x 1
- 5m 336Chip COB LED strip x 1
- User Manual x 1

Installation Instructions



1. Open the package and check to see if all components are there. Then unroll the LED strip, Connect the strip to the controller and driver. Plug in the power supply to ensure everything is working. Refer to the wiring diagram as needed.
2. Clean the installation surface. The surface must be dry and smooth or the adhesive backing will not properly stick. NOTE: the adhesive backing can only be used once. The tape light will not adhere to the surface if it is dirty or if the backing is reused. (Fig. 1)
3. Measure out the required length and cut the strip on the notated cutting marks. (Fig. 2)
4. Remove the paper backing from the adhesive. Press the strip firmly to the surface (Fig. 3). Connect the strip to the controller and driver, referring to the wiring diagram as needed. (Fig 4 & 5)
5. Attach the driver to the surface, making sure that all components are attached securely.

Wiring Diagram

