



# PLT SOLUTIONS PLT-12405 Color Selectable Ultra Thin LED Downlight Owner's Manual

[Home](#) » [PLT SOLUTIONS](#) » PLT SOLUTIONS PLT-12405 Color Selectable Ultra Thin LED Downlight Owner's Manual 

## Contents

- [1 PLT-12405 Color Selectable Ultra Thin LED Downlight](#)
- [2 Product Information](#)
- [3 Performance Summary](#)
- [4 Warnings](#)
- [5 Product Usage Instructions](#)
- [6 DESCRIPTION](#)
- [7 FEATURES](#)
- [8 LISTINGS](#)
- [9 PERFORMANCE](#)
- [10 ELECTRICAL](#)
- [11 THERMAL](#)
- [12 CONSTRUCTION](#)
- [13 WARRANTY](#)
- [14 APPLICATIONS](#)
- [15 PERFORMANCE SUMMARY](#)
- [16 DIMMER COMPATIBILITY](#)
- [17 DIMENSIONS](#)
- [18 WARNINGS](#)
- [19 Documents / Resources](#)
  - [19.1 References](#)
- [20 Related Posts](#)





## Product Information

The COLOR SELECTABLE ULTRA-THIN LED DOWNLIGHT is an easy-to-install lighting fixture that can be used for new construction or renovation projects. It comes with 5 selectable color temperatures and is damp location rated. The fixture has a power consumption of 9, 12, 14, or 22 watts and produces lumens of 600, 800, 900, or 1600 depending on the model. The light has a CRI of 90 and a life of 50,000 hours. It is also dimmable and has a power factor of 0.97.

## Performance Summary

| Item #               | PLT-12399                             | PLT-12404                             | PLT-12405                            | PLT-12406                            |
|----------------------|---------------------------------------|---------------------------------------|--------------------------------------|--------------------------------------|
| Size                 | 4                                     | 4                                     | 6                                    | 8                                    |
| Lumens               | 600                                   | 800                                   | 900                                  | 1600                                 |
| Wattage              | 9                                     | 12                                    | 14                                   | 22                                   |
| LPW                  | 67                                    | 67                                    | 64                                   | 73                                   |
| Voltage              | 120V                                  | 120V                                  | 120V                                 | 120V                                 |
| Replaces             | 60W Incan.                            | 75W Incan.                            | 75W Incan.                           | 100W Incan.                          |
| CCT                  | 2700K/ 3000K/ 3500K<br>/ 4000K/ 5000K | 2700K/ 3000K/ 3500K<br>/ 4000K/ 5000K | 2700K/ 3000K/<br>3500K/ 4000K/ 5000K | 2700K/ 3000K/<br>3500K/ 4000K/ 5000K |
| Dimmer Compatibility | Lutron PD-6WCL                        | Lutron DVCL-153P                      | Lutron SFTU-5A3P                     | Lutron CTCL-153P                     |

## Dimensions

The dimensions of the fixture vary depending on the size. The 4-inch model has an outside diameter of 5 inches, an inside diameter of 3.2 inches, and a height of 0.97 inches. The 6-inch model has an outside diameter of 6.9

inches, an inside diameter of 5 inches, and a height of 1.04 inches. The 8-inch model has an outside diameter of 9.1 inches, an inside diameter of 6.8 inches, and a height of 0.94 inches. The cable length is 6.5 inches for the downlight half, and the combined cable length is 12 inches.

## **Warnings**

Refer to the installation instructions before installing the fixture.

## **Product Usage Instructions**

1. Choose the appropriate size and color temperature for your space.
2. Refer to the installation instructions to properly install the fixture.
3. Connect the fixture to a power source.
4. If using a dimmer switch, refer to the dimmer compatibility list to ensure compatibility with the fixture.
5. The fixture is now ready to use. Select the desired color temperature using the switch on the fixture or a compatible dimmer switch.

## **DESCRIPTION**

Add downlights as part of new construction or renovation projects with these easy to install ultra-thin LED downlights featuring 5 selectable color temperatures.

## **FEATURES**

- Energy efficient replacement for 60W, 75W, and 100W incandescents
- High color rendering index (CRI) of 90 makes color appear more naturally
- Comes with remote junction box that allows for installation around obstructions
- IC Rated and air-tight
- Dimmable; see Compatible Dimmers section for full list of compatible dimmers
- Color temperature can be adjusted via switch on back of fixture; see installation instructions for more information

## **LISTINGS**

- ETL Listed for damp locations
- IC Rated
- RoHS
- JA8
- Energy Star

## **PERFORMANCE**

- CRI: 90
- CCT: 2700K, 3000K, 3500K, 4000K, and 5000K
- Rated Lifetime L70: 50,000 hours

## ELECTRICAL

- Power Factor: >0.9
- Input Voltage: 120V
- Surge Protection: 2.5kV

## THERMAL

- -4°F to 104°F (-20°C to 40°C) operating temperature

## CONSTRUCTION

- Aluminum body with aluminum trim, both with white finish
- White translucent acrylic lens

## WARRANTY

3 year limited warranty; see [pltsolutions.com](http://pltsolutions.com) for warranty details

|                       |                |
|-----------------------|----------------|
| <b>project name</b>   | <b>type</b>    |
| <b>catalog number</b> |                |
| <b>comments</b>       | <b>voltage</b> |
| <b>approved by</b>    | <b>date</b>    |

## APPLICATIONS

- Offices
- Lobbies
- Conference Rooms
- Living Rooms
- Hallways
- Bathrooms
- Laundry Rooms

|              |                          |                                   |
|--------------|--------------------------|-----------------------------------|
| PERFORMANCE  | <b>Power Consumption</b> | 9, 12, 14, 22 Watt                |
|              | <b>Lumens</b>            | 600, 800, 900, 1600               |
|              | <b>Efficacy (LPW)</b>    | 64, 67, 73                        |
|              | <b>CRI</b>               | 90                                |
|              | <b>CCT</b>               | 2700K, 3000K, 3500K, 4000K, 5000K |
|              | <b>Beam Angle</b>        | 110°                              |
|              | <b>Life (L70)</b>        | 50,000                            |
| ELECTRICAL   | <b>Power Factor</b>      | >0.9                              |
|              | <b>Input Voltage</b>     | 120V                              |
| CONSTRUCTION | <b>Finish</b>            | White                             |
|              | <b>Lens</b>              | Frosted                           |
| LISTINGS     | <b>Certifications</b>    | ETL Listed; JA8; Energy Star      |
|              | <b>Material Usage</b>    | RoHS – No mercury or lead         |
|              | <b>Environment</b>       | Damp Location Rated               |

## PERFORMANCE SUMMARY

| Item #    | Size | Lumens | Wattage | LPW | Voltage | Replaces    | CCT                                           | CRI | Life/ Hours | Dimmable |
|-----------|------|--------|---------|-----|---------|-------------|-----------------------------------------------|-----|-------------|----------|
| PLT-12399 | 4"   | 600    | 9       | 67  | 120V    | 60W Incan.  | 2700K/<br>3000K/<br>3500K/<br>4000K/<br>5000K | 90  | 50,000      | Yes      |
| PLT-12404 | 4"   | 800    | 12      | 67  | 120V    | 75W Incan.  | 2700K/<br>3000K/<br>3500K/<br>4000K/<br>5000K | 90  | 50,000      | Yes      |
| PLT-12405 | 6"   | 900    | 14      | 64  | 120V    | 75W Incan.  | 2700K/<br>3000K/<br>3500K/<br>4000K/<br>5000K | 90  | 50,000      | Yes      |
| PLT-12406 | 8"   | 1600   | 22      | 73  | 120V    | 100W Incan. | 2700K/<br>3000K/<br>3500K/<br>4000K/<br>5000K | 90  | 50,000      | Yes      |

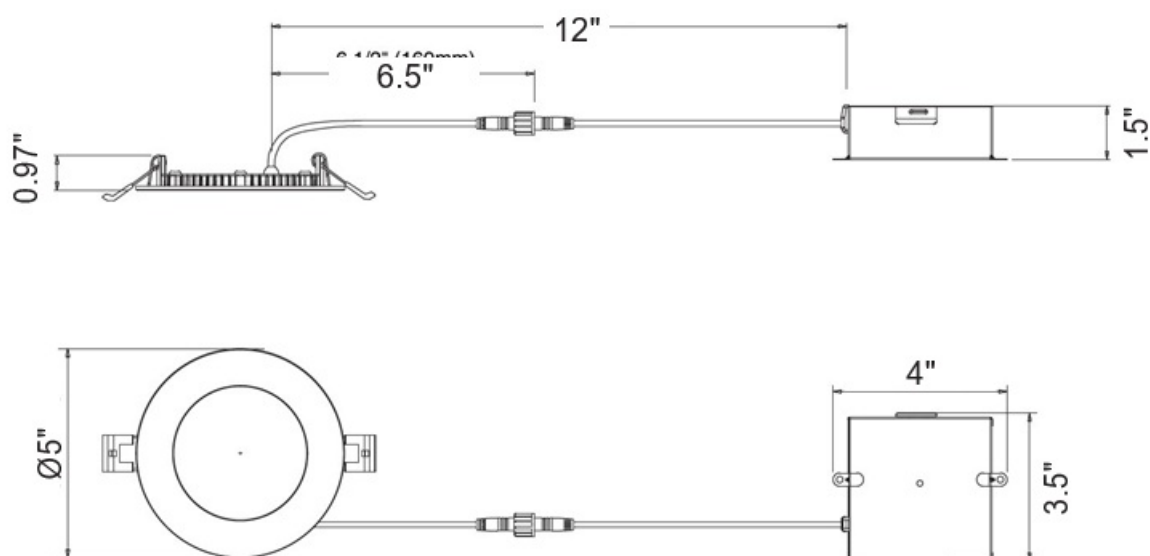
## DIMMER COMPATIBILITY

| Brand   | Model #   |
|---------|-----------|
| Lutron  | PD-6WCL   |
| Lutron  | DVCL-153P |
| Lutron  | SFTU-5A3P |
| Lutron  | DMD-LE3-D |
| Lutron  | CTCL-153P |
| Lutron  | DV-600P   |
| Leviton | 6621      |
| Leviton | 6672      |
| Leviton | IPL06-10Z |
| Cooper  | SI06P     |

## DIMENSIONS

### 4" DIMENSIONS:

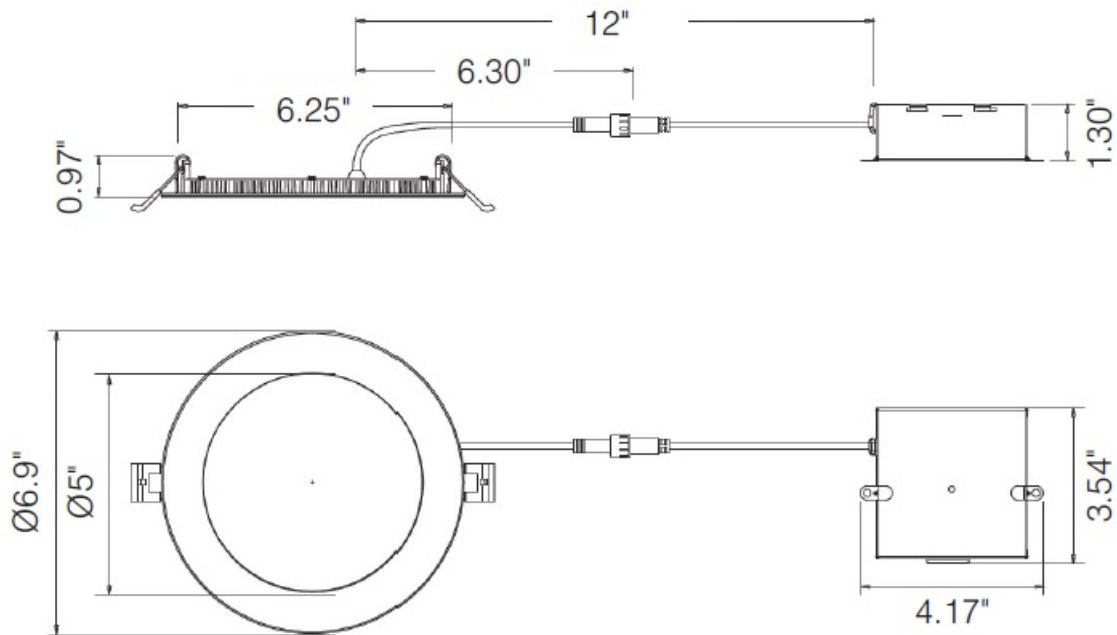
- **Outside Diameter:** 5"
- **Inside Diameter:** 3.2"
- **Height:** 0.97"
- **Cable Length (downlight half):** 6.5" Weight: 0.72 lbs
- **Junction Box Length:** 3.5" Junction Box Width: 4"
- **Junction Box Height:** 1.5" Combined Cable Length: 12"



### 6" DIMENSIONS:

- **Outside Diameter:** 6.9"

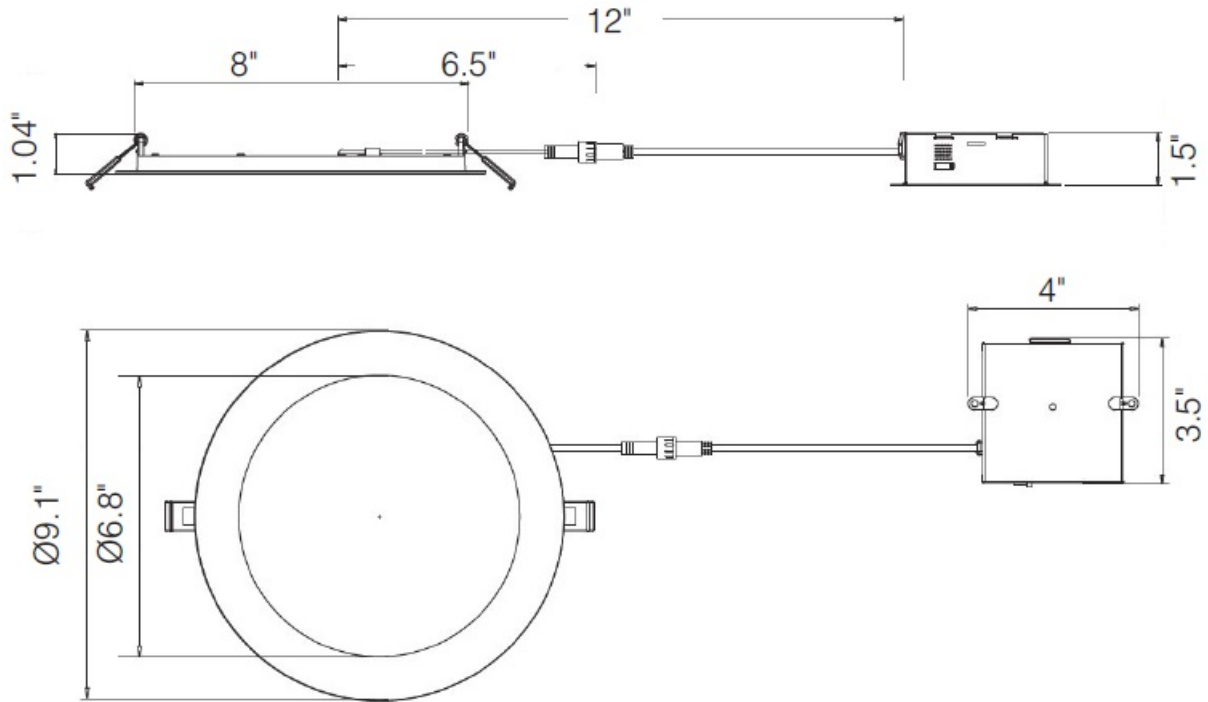
- Inside Diameter: 5"
- Height: 1.04"
- Cable Length (downlight half): 6.30"
- Weight: 0.86 lbs
- Junction Box Length: 3.54"
- Junction Box Width: 4.17"
- Junction Box Height: 1.30"
- Combined Cable Length: 12"
- Combined Cable Length: 11.81"



#### 8" DIMENSIONS:

- **Outside Diameter:** 9.1"
- **Inside Diameter:** 6.8"
- **Height:** 0.94"
- **Cable Length (downlight half):** 6.5" **Weight:** 1.25 lbs
- **Junction Box Length:** 3.5" **Junction Box Width:** 4"
- **Junction Box Height:** 1.5" **Combined Cable Length:** 12"





## WARNINGS

- Only use this LED downlight with the dimmers listed in the compatibility list. Using this downlight with incompatible dimmers may cause performance issues including humming, buzzing, flickering, and poor dimming performance.
- Cutout size requirements: 4"–4.25"; 6"–6.25"; 8"–8.25"

## Documents / Resources



[PLT SOLUTIONS PLT-12405 Color Selectable Ultra Thin LED Downlight](#) [pdf] Owner's Manual

PLT-12406, PLT-12399, PLT-12404, PLT-12405, PLT-12405 Color Selectable Ultra Thin LED Downlight, Color Selectable Ultra Thin LED Downlight, Ultra Thin LED Downlight, LED Downlight, Downlight

## References

- [PLT Solutions](#)