




plank 13A 1G Socket User Guide

[Home](#) » [plank](#) » plank 13A 1G Socket User Guide 

plank
H A R D W A R E



Contents

1 13A 1G Socket

2 13A 2G SOCKET

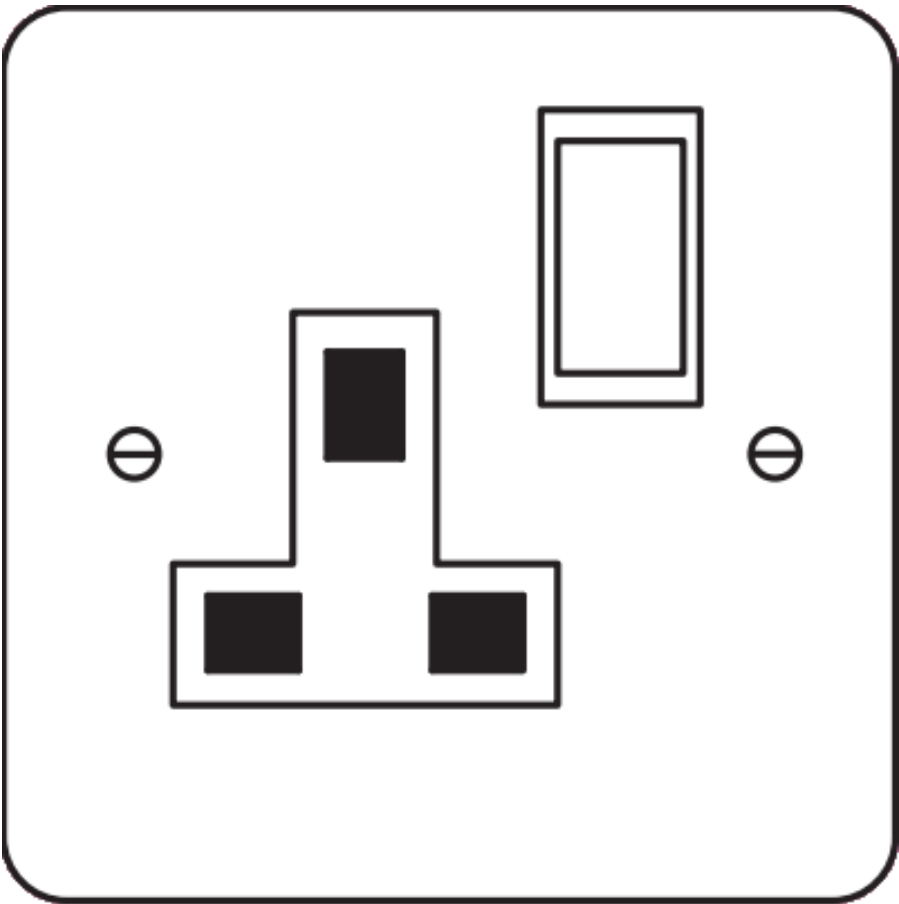
3 13A 2G SOCKET + USB

4 Documents / Resources

4.1 References

13A 1G Socket

13A 1G SOCKET
WIRING GUIDE



Product Description	13A 1G SOCKET
Guarantee	10 years
Certification	CE; UKCA; RoHS
Standards	BS 1363-2, BS EN 62368-1
Product Class 1	(For Indoor Use Only) Faceplate must be earthed
Operating Temp	-5C to 40C
Screw CC	60.3mm
Rating	13A 250V 50Hz – 60hz
Max Altitude	2000m
Back Box Depth:	25 mm (Minimum) depth

For safe installation, follow local Building Regulations. If in any doubt, consult a registered electrician.

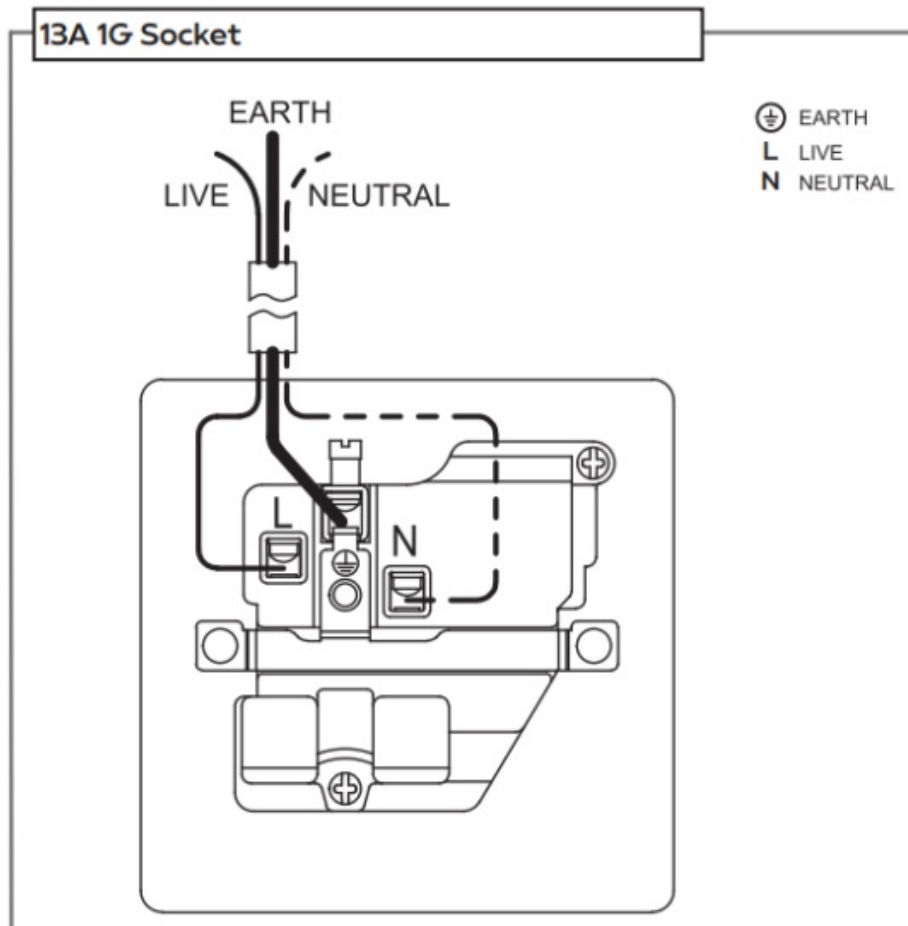


BEFORE STARTING ANY WORK, IT IS CRUCIAL TO ISOLATE THE MAINS POWER SUPPLY. THIS CAN



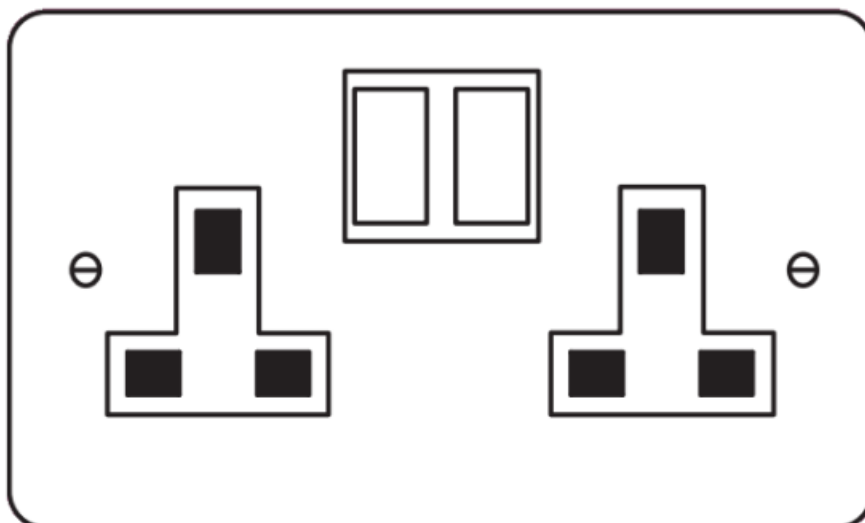
BE DONE BY EITHER REMOVING THE FUSE BOX OR SWITCHING OFF THE CIRCUIT BREAKER.

WARNING: Do not apply products with metal faceplates directly to freshly plastered or damp surfaces as product may tarnish. If in doubt, use polythene as a temporary gasket to protect the product. Do not use masking tape on metal faceplates.



13A 2G SOCKET

WIRING GUIDE



Product Description	13A 1G SOCKET
Guarantee	10 years
Certification	CE; UKCA; RoHS
Standards	BS 1363-2, EN 62368-1, BS EN 62368-1
Product Class 1	(For Indoor Use Only) Faceplate must be earthed
Operating Temp	-5C to 40C
Screw CC	120.6 mm
Rating	13A 250V 50Hz – 60hz
Max Altitude	2000m
Back Box Depth:	25 mm (Minimum) depth

For safe installation, follow local Building Regulations. If in any doubt, consult a registered electrician.

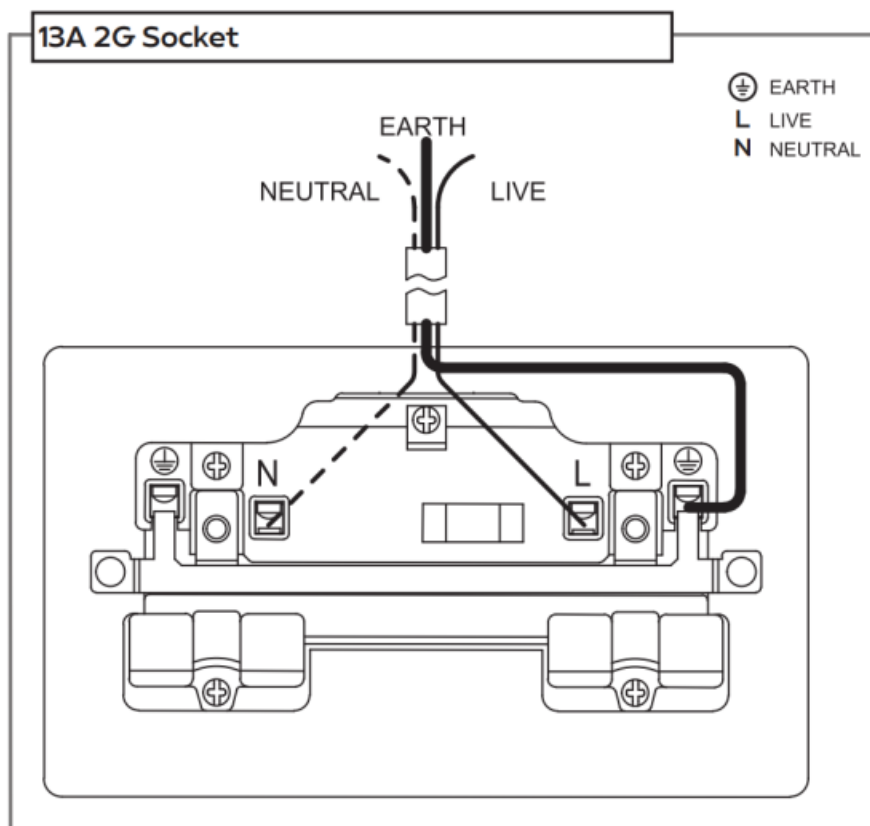


BEFORE STARTING ANY WORK, IT IS CRUCIAL TO ISOLATE THE MAINS POWER SUPPLY. THIS CAN



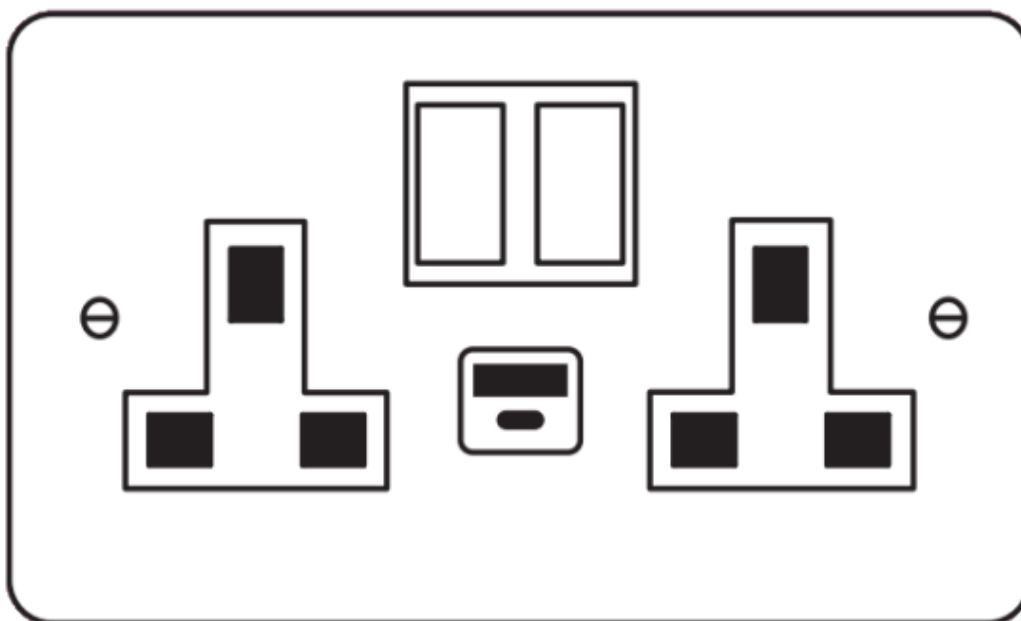
BE DONE BY EITHER REMOVING THE FUSE BOX OR SWITCHING OFF THE CIRCUIT BREAKER.

WARNING: Do not apply products with metal faceplates directly to freshly plastered or damp surfaces as product may tarnish. If in doubt, use polythene as a temporary gasket to protect the product. Do not use masking tape on metal faceplates.



13A 2G SOCKET + USB

WIRING GUIDE



Product Description : 13A Socket + 2 USB Ports A+C

USB type	Type A & C
USB Output	PD/ QC 20W MAX
Guarantee	3 years
Certification	CE; UKCA; RoHS
Standards	BS 1363-2, EN 62368-1, BS EN 62368-1 (For Indoor Use Only)
Product Class 1	Faceplate must be earthed
Operating Temperature	-5C to 40C
Screw CC	120.6mm
Voltage Rating	13A 250V~
Mains Frequency	50Hz – 60hz
Max Installation Altitude	2000m
IP Rating	IP2XD
Back Box Depth :	25 mm (Minimum) depth

For safe installation, follow local Building Regulations. If in any doubt, consult a registered electrician.

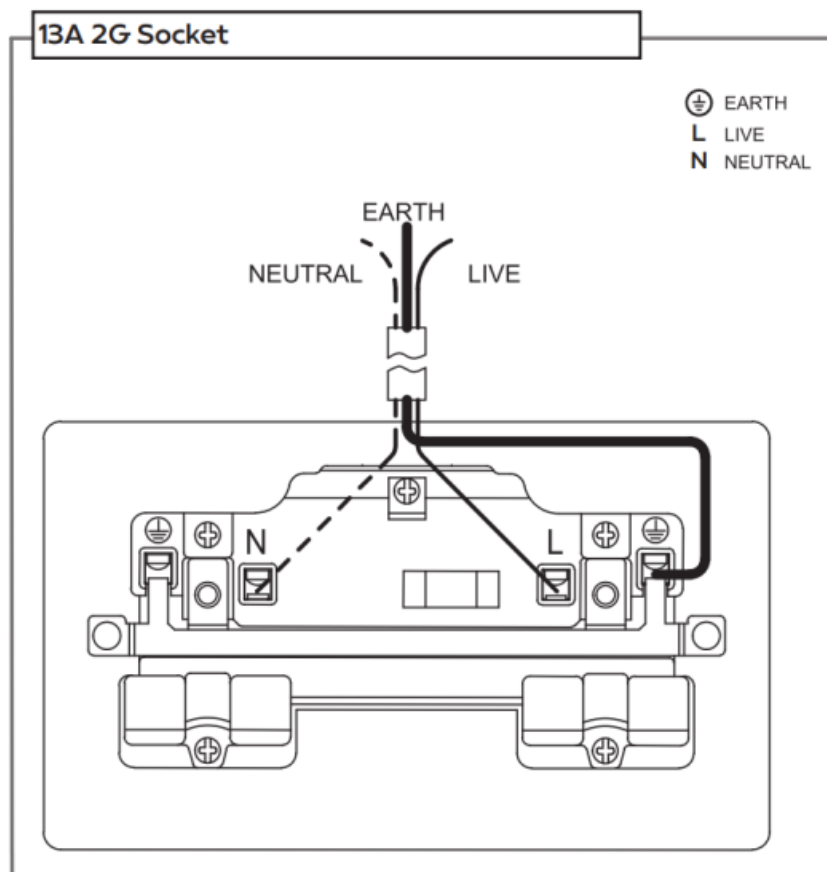


BEFORE STARTING ANY WORK, IT IS CRUCIAL TO ISOLATE THE MAINS POWER SUPPLY. THIS CAN

BE DONE BY EITHER REMOVING THE FUSE BOX OR SWITCHING OFF THE CIRCUIT BREAKER.

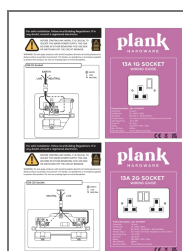


WARNING: Do not apply products with metal faceplates directly to freshly plastered or damp surfaces as product may tarnish. If in doubt, use polythene as a temporary gasket to protect the product. Do not use masking tape on metal faceplates.



plank
HARDWARE
CE ~~UK~~ CA

Documents / Resources



[plank 13A 1G Socket](#) [pdf] User Guide

5061047320303, 5061047321881, 5061047320273, 5061047320280, 13A 1G Socket, 1G Socket, Socket

References

- [User Manual](#)

[Manuals+.](#) [Privacy Policy](#)

This website is an independent publication and is neither affiliated with nor endorsed by any of the trademark owners. The "Bluetooth®" word mark and logos are registered trademarks owned by Bluetooth SIG, Inc. The "Wi-Fi®" word mark and logos are registered trademarks owned by the Wi-Fi Alliance. Any use of these marks on this website does not imply any affiliation with or endorsement.