



## **Contents** [ [hide](#) ]

- [1 Planet Technology IGS-500T-E Gigabit Ethernet Switch](#)
- [2 Package Contents](#)
- [3 Product Specifications](#)
- [4 Hardware Introduction](#)
- [5 Installation](#)
- [6 FCC Warning](#)
- [7 Frequently Asked Questions](#)
- [8 Documents / Resources](#)
  - [8.1 References](#)


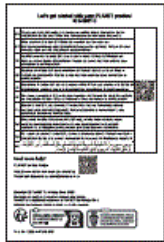





## **Planet Technology IGS-500T-E Gigabit Ethernet Switch**



## Package Contents

- Thank you for purchasing PLANET Compact Industrial 5-port 10/100/1000T Ethernet Switch, IGS-500T-E. In the following section, the term “Industrial Ethernet Switch” means the IGS-500T-E.
- Open the box of the Industrial Ethernet Switch and carefully unpack it. The box should contain the following items:

Industrial Ethernet Switch x 1		QR Code Sheet x 1	
			
DIN-rail Kit		Wall-mount Kit	RJ45 Dust Cap x 5
			

- If any of these are missing or damaged, please contact your dealer immediately; if possible, retain the carton including the original packing material, and use them again

to repack the product in case there is a need to return it to us for repair.

## Product Specifications

Product	IGS-500T-E
Hardware Specifications	
Copper Ports	5 x 10/100/1000BASE-T RJ45 auto-MDI/MDI-X ports, auto negotiation
DIP Switch	<ul style="list-style-type: none"><li>• <b>Standard:</b> In the normal mode, all interfaces can communicate with each other. Transmission distance is within 100 meters, and transmission rate is 10/100/1000Mbps.</li><li>• <b>Extend:</b> In the link extension mode, the data transmission distance for Ports 1-4 can be extended to 250 meters, and transmission speed is 10Mbps.</li></ul>
Connector	Removable 4-pin terminal block for power input Pin 1/2 for Power 1, Pin 3/4 for Power 2 One for DC jack with central pole 2.1mm with Power 3
Power Requirements	12~55V DC (with polarity protection) Redundant power support
Power Consumption	Max. 1.65 watts/5.63 BTU (Ethernet full loading)
ESD Protection	6KV DC
Enclosure	IP40 metal case
Dimensions (W x D x H)	30.2 x 76.1 x 100 mm
Weight	266g
Installation	DIN-rail kit and wall-mount kit

LED Indicator	<b>System:</b> <ul style="list-style-type: none"> <li>• Power (Green)</li> <li>• 10/100/1000T RJ45</li> </ul> <b>Ports:</b> 10/100/1000T LNK/ACT (Green)
---------------	---

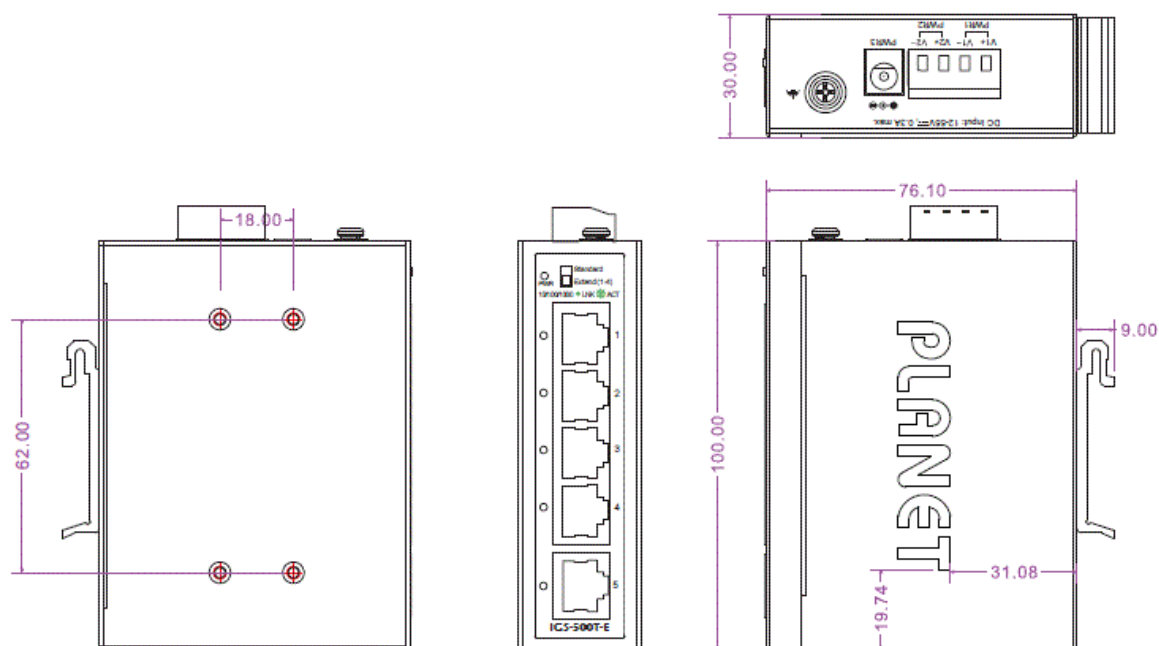
Standards Conformance	
Switch Architecture	Store-and-Forward
Switch Fabric	10Gbps (non-blocking)
Throughput (packet per second)	0.744Mpps@64 bytes
Address Table	2K entries
Shared Data Buffer	3M bits
Flow Control	IEEE 802.3x pause frame for full duplex Back pressure for half duplex
Standards Conformance	
Regulatory Compliance	FCC Part 15 Class A, CE
Stability Testing	<ul style="list-style-type: none"> <li>• IEC60068-2-32 (free fall) IEC60068-2-27 (shock)</li> <li>• IEC60068-2-6 (vibration)</li> </ul>

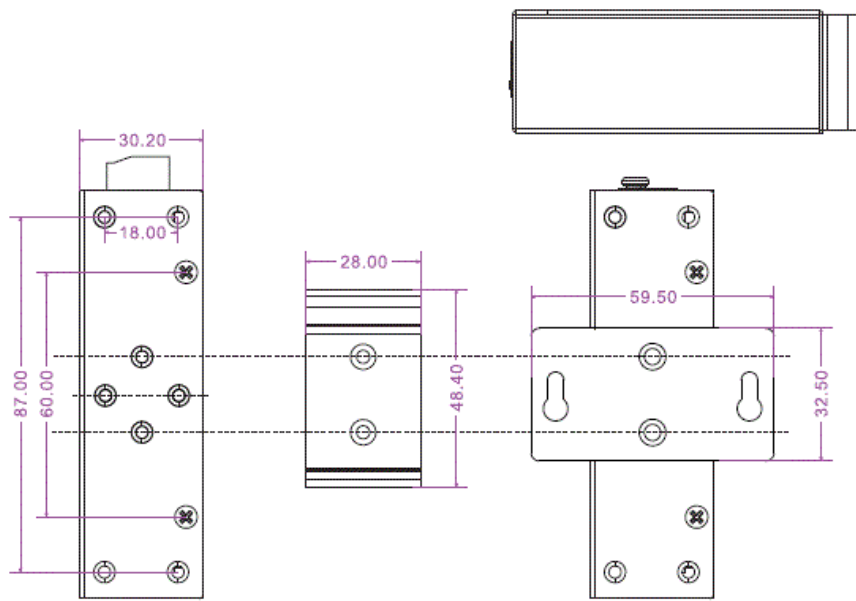
Standards Compliance	<ul style="list-style-type: none"> <li>• IEEE 802.3 10BASE-T IEEE 802.3u 100BASE-TX IEEE 802.3ab 1000BASE-T</li> <li>• IEEE 802.3x flow control and back pressure IEEE 802.3az Energy Efficient Ethernet (EEE)</li> </ul>
Environment	
Operating Temperature	-40 ~ 75 degrees C
Storage Temperature	-40 ~ 85 degrees C
Operating Humidity	10 ~ 90% (non-condensing)
Storage Humidity	5 ~ 95% (non-condensing)

## Hardware Introduction

### Three-View Diagram

The three-view diagram of the Industrial Ethernet Switch consists of five auto-sensing 10/100/1000BASE-T RJ45 ports and one removable 4-pin terminal block. The LED indicators are also located on the front panel.





Dimensions (W x D x H): 30.2 x 76.1 x 100 mm

Figure 1: IGS-500T-E Three-View Diagram

## Front View

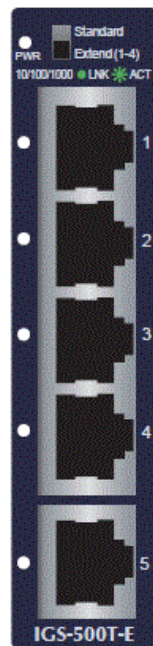


Figure 2: IGS-500T-E Front View

## LED Definition

## System

LED	Color	Function
-----	-------	----------

PWR	Green	<b>Lights</b> to indicate DC power input has power.
-----	-------	---

Per 10/100/1000BASE-T Port

LED	Color	Function	
10/100/1000LNK/ACT	Green	<b>Lights</b>	Indicating the port is running at10/100/1000Mbps and successfully established.
		<b>Blinks</b>	Indicating that the switch is actively sending or receiving data over that port.

Top View

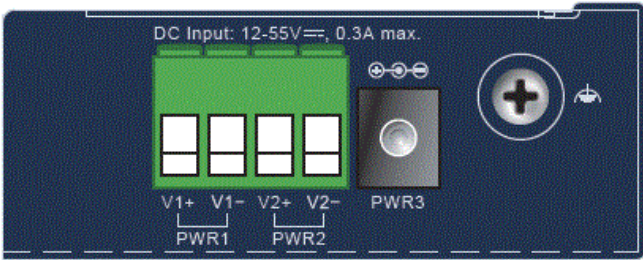


Figure 3: IGS-500T-E Top View

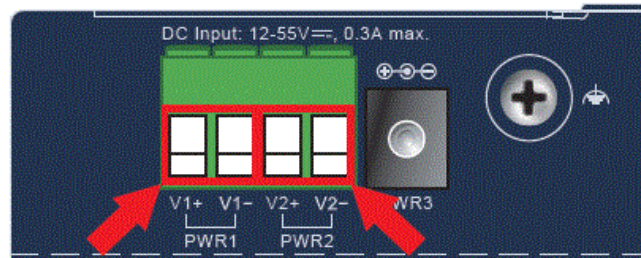
Wiring the Power Inputs

The 4-contact terminal block connector on the top panel of Industrial Ethernet Switch is used for two DC redundant power inputs. Please follow the steps below to insert the power wire.

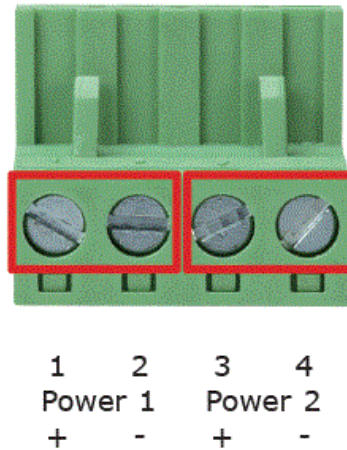
CAUTION

When performing any of the procedures like inserting the wires or tightening the wire-clamp screws, make sure the power is OFF to prevent from getting an electric shock.

1. Insert positive and negative DC power wires into contacts 1 and 2 for POWER 1, or contacts 3 and 4 for POWER 2.



2. Tighten the wire-clamp screws for preventing the wires from loosening.

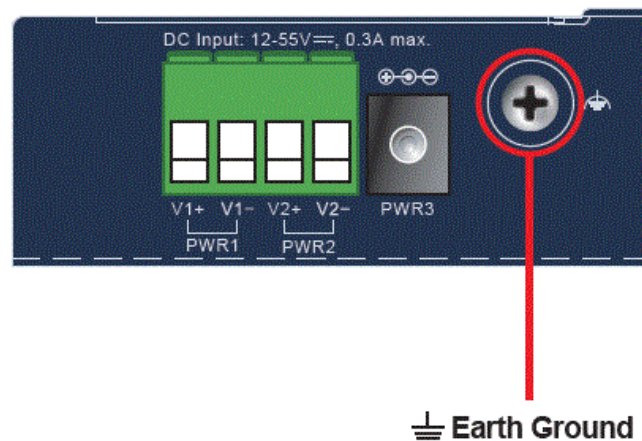


## NOTE

1. The wire gauge for the terminal block should be in the range between 12 and 24 AWG.
2. The DC power input range is 12V ~ 55V DC.

## Grounding the Device

Users MUST complete grounding wired with the device; otherwise, a sudden lightning could cause fatal damage to the device. EMD (Lightning) DAMAGE IS NOT COVERED UNDER WARRANTY.



## Installation

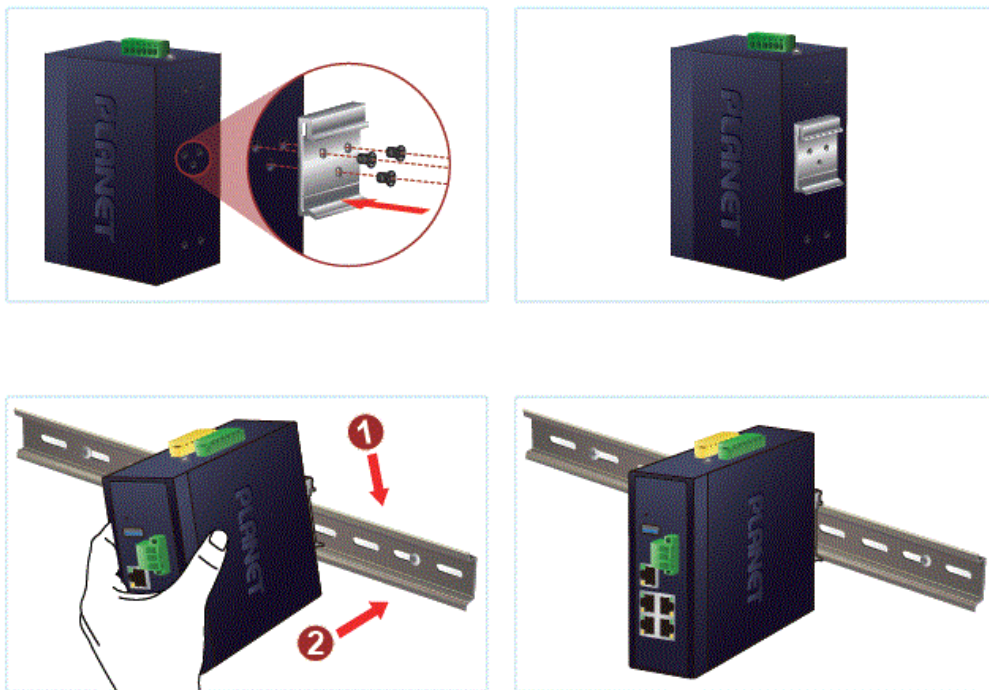


This section describes the functionalities of the Industrial Ethernet Switch's components and guides you to installing it on the DIN rail and wall. Please read this chapter completely before continuing.

## NOTE

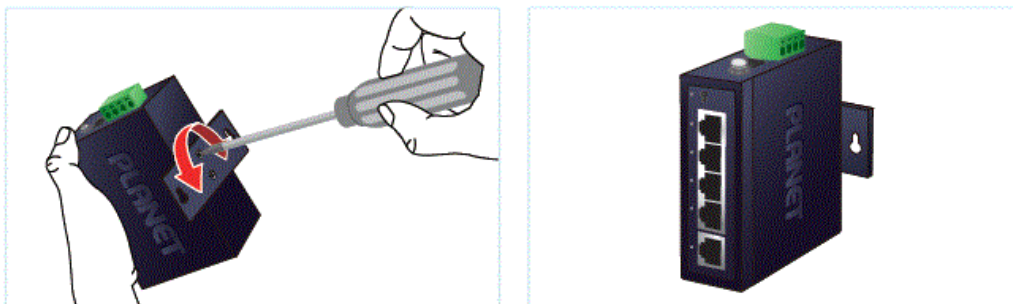
This following pictures show the user how to install the device, and the device is not IGS-500T-E.

### DIN-rail Mounting Installation



Place the bracket on the back of the device and with the given 3 screws, tighten them. Slide the device with the bracket mounted through the DIN-rail to finish the installation.

### Wall-mount Plate Mounting



Place the mounting plate on the back of the device, and tighten it with the given screws. Then put the device with the plate mounted on the wall, and screw them to finish the

installation.

## **CAUTION**

You must use the screws supplied with the wall-mounting brackets. Damage caused to the parts by using incorrect screws would invalidate your warranty.

## **Customer Support**

Thank you for purchasing PLANET products. You can browse our online FAQ resource on PLANET web site first to check if it could solve your issue. If you need more support information, please contact PLANET switch support team.

- PLANET online FAQs: <https://www.planet.com.tw/en/support/faq.php>
- Switch support team mail address: [support@planet.com.tw](mailto:support@planet.com.tw)
- Copyright © PLANET Technology Corp. 2025.
- Contents are subject to revision without prior notice. PLANET is a registered trademark of PLANET Technology Corp. All other trademarks belong to their respective owners.

## **Trademarks**

- Copyright © PLANET Technology Corp. 2025.
- Contents are subject to revision without prior notice.
- PLANET is a registered trademark of PLANET Technology Corp.
- All other trademarks belong to their respective owners.

## **Disclaimer**

- PLANET Technology does not warrant that the hardware will work properly in all environments and applications, and makes no warranty and representation, either implied or expressed, with respect to the quality, performance, merchantability, or fitness for a particular purpose. PLANET has made every effort to ensure that this User's Manual is accurate; PLANET disclaims liability for any inaccuracies or omissions that may have occurred.
- Information in this User's Manual is subject to change without notice and does not represent a commitment on the part of PLANET. PLANET assumes no responsibility

for any inaccuracies that may be contained in this User's Manual. PLANET makes no commitment to update or keep current the information in this User's Manual, and reserves the right to make improvements to this User's Manual and or to the products described in this User's Manual, at any time without notice.

- If you find information in this manual that is incorrect, misleading, or incomplete, we would appreciate your comments and suggestions.

## **FCC Warning**

This equipment has been tested and found to comply with the limits for a Class A digital device, pursuant to Part 15 of the FCC Rules. These limits are designed to provide reasonable protection against harmful interference when the equipment is operated in a commercial environment. This equipment generates, uses, and can radiate radio frequency energy and, if not installed and used in accordance with the Instruction manual, may cause harmful interference to radio communications. Operation of this equipment in a residential area is likely to cause harmful interference in which case the user will be required to correct the interference at whose own expense.

## **CE Mark Warning**

This device is compliant with Class A of CISPR 32. In a residential environment this equipment may cause radio interference.



## **WEEE Warning**

To avoid the potential effects on the environment and human health as a result of the presence of hazardous substances in electrical and electronic equipment, end users of electrical and electronic equipment should understand the meaning of the crossed-out wheeled bin symbol. Do not dispose of WEEE as unsorted municipal waste and have to collect such WEEE separately.

## **Energy Saving Note of the Device**


This power required device does not support Standby mode operation. For energy savings, please remove the DC plug or slide the hardware-based Power Switch to the OFF position to disconnect the device from the power circuit. Without removing the DC plug from or switching off the device, the device will still consume power from the power

source. In view of Saving the Energy and reducing the unnecessary power consumption, it is strongly suggested to power off or to remove the DC plug from the device if this device is not intended to be active.

## Frequently Asked Questions

- **Q: What should I do if any items are missing or damaged in the package?**
  - A: If any items are missing or damaged, please contact your dealer immediately. Retain the original packing material for potential returns.
- **Q: How can I access the online User’s Manual or Quick Installation Guide?**
  - A: Scan the provided QR code with your smartphone to browse and follow the instructions for setup in your preferred language.
- **Q: What is the purpose of the DIP switch on the IGS-500T-E?**
  - A: The DIP switch allows you to select between standard and extended transmission modes for different distance requirements on specific ports.

## Documents / Resources

	<a href="#">Planet Technology IGS-500T-E Gigabit Ethernet Switch [pdf]</a> User Manual 500T-E, IGS-500T-E Gigabit Ethernet Switch, IGS-500T-E, Gigabit Ethernet Switch, Ethernet Switch, Switch
---	--

## References

- [User Manual](#)

Planet

Technology

500T-E, Ethernet Switch, Gigabit Ethernet Switch, IGS-500T-E, IGS-500T-E Gigabit Ethernet Switch, Planet Technology, switch

## Leave a comment

Your email address will not be published. Required fields are marked \*

Comment \*

Name

Email

Website

☐ Save my name, email, and website in this browser for the next time I comment.

Post Comment

Search:

e.g. whirlpool wrf535swhz

Search

Manuals+ | Upload | Deep Search | Privacy Policy | @manuals.plus | YouTube

This website is an independent publication and is neither affiliated with nor endorsed by any of the trademark owners. The "Bluetooth®" word mark and logos are registered trademarks owned by Bluetooth SIG, Inc. The "Wi-Fi®" word mark and logos are registered trademarks owned by the Wi-Fi Alliance. Any use of these marks on this website does not imply any affiliation with or endorsement.