



PLANET HOBBY Gyroscope Flight Controller Instruction Manual

[Home](#) » [PLANET HOBBY](#) » PLANET HOBBY Gyroscope Flight Controller Instruction Manual 

Contents

- [1 PLANET HOBBY Gyroscope Flight Controller Instruction](#)
- [2 Product Specifications](#)
- [3 Product Usage Instructions](#)
- [4 Equipment installation](#)
- [5 Sensitivity setting](#)
- [6 Gyroscope Flight Controller](#)
- [7 Documents / Resources](#)
 - [7.1 References](#)
- [8 Related Posts](#)



PLANET HOBBY Gyroscope Flight Controller Instruction



Product Specifications

- Working voltage: 4.5-6V
- Response frequency: 100Hz
- Working temperature: 0-50°C
- Size: 43*28*15mm
- Weight: 11g

Product Usage Instructions

Equipment Installation

1. Place the long side of the flight control device parallel to the fuselage.
2. Ensure that the label surface is facing upwards.
3. Position the flight control device as close to the center of gravity as possible.
4. Glue the flight control device firmly at the center line.

Mode Selection / Mode Description

- Mode-1: Aileron Balance Mode
This mode provides balanced aileron control.
- Mode-2: Aileron Lock Mode
In this mode, the aileron movement is locked.
- Mode-3: Aileron Enhancement Mode
This mode enhances the aileron response.
- Mode-4: Wind Resistant Mode
This mode is designed to improve performance in windy conditions.
- Mode-5: One-click Rescue Mode (When the flight control department is working normally)

In this mode, a one-click rescue function is available. It can be activated using CH5 Momentary.

- Mode-5R: One-click Rescue Mode Horizontal Tail Reverse

This mode is similar to Mode-5 but with reversed horizontal tail control.

- Mode-off: Manual Mode

In this mode, the flight control device operates in a manual mode without any additional stabilization or assistance.

Sensitivity Setting

- Mode Delta wing: This setting is used for delta wing models.
- V Mode- V-tail: This setting is used for V-tail models.

Turn On/Off the Vertical Tail Posture Maintenance Function

Please scan the QR code provided in the manual for detailed instructions on setting up this function.

Notice

1. The voltage drop caused by servo usage may affect the stability of flight control. Please ensure a stable working voltage.
2. For Delta wing/V-tail models, please turn off the internal mixing control of the remote control first.
3. If micro adjustments are made during flight, please power off and restart or perform neutral point calibration after landing.

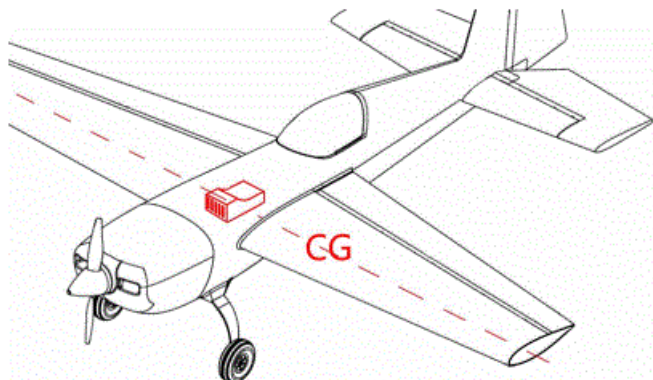
Not suitable for children under 14 years.

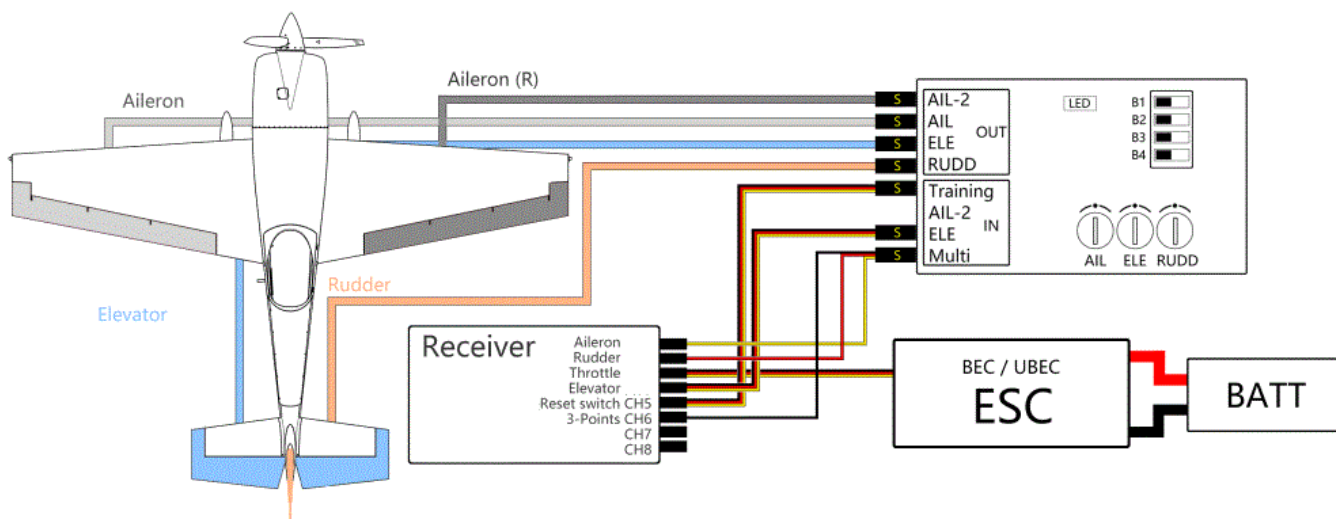
FAQ

- Q: Is this flight controller suitable for helicopters?
A: No, this flight controller is specifically designed for fixed-wing aircraft models.
- Q: How do I calibrate the neutral point?
A: To calibrate the neutral point, power off the flight control device and restart it, or follow the neutral point calibration procedure provided in the manual.

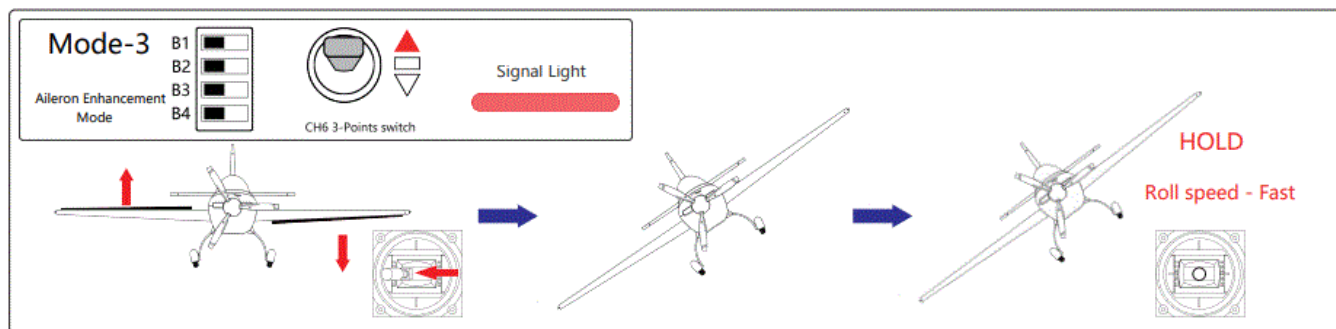
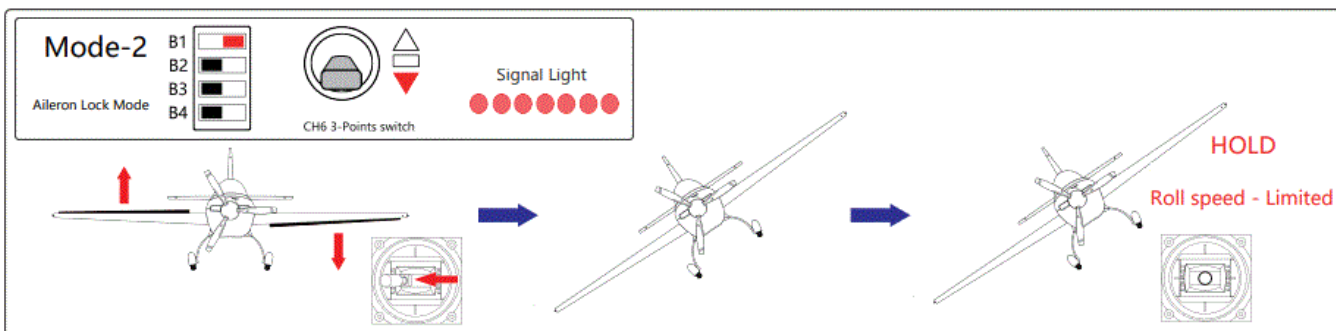
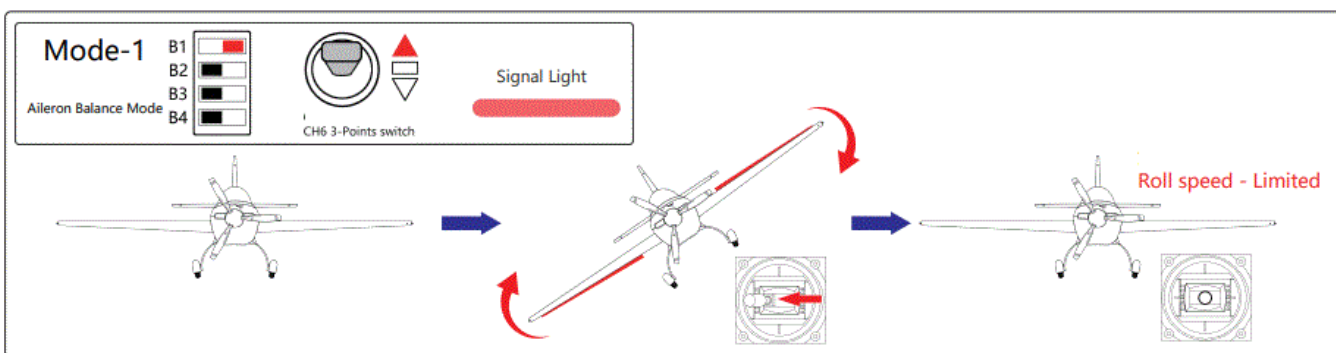
Equipment installation

Place the long side of the flight control device parallel to the fuselage, the label surface upwards, and as close to the center of gravity as possible and glue firmly at the center line.





Mode selection/Mode description



Mode-4
Wind Resistant Mode

B1
B2
B3
B4

Signal Light

HOLD
Roll speed - Extremely fast

Mode-5
One-click Rescue Mode
(When the flight control department is working normally)

Signal Light

Mode-5R
One-click Rescue Mode
Horizontal Tail Reverse

Mode-off
Manual Mode

B1
B2
B3
B4

Signal Light

Mode - Delta wing

B1
B2
B3
B4

Mode- V-tail

B1
B2
B3
B4

Turn on/off the vertical tail posture maintenance function

Sensitivity setting

Please scan the QR code to check the detailed setting



Gyroscope Flight Controller

Product specifications

- Working voltage 4.5-6V
- Response frequency 100Hz
- Working temperature : 0-50°CSize : 43*28*15mm
- Weight: 11g

Notice in the first use

1. The voltage drop caused by the use of the servo may affect the stability of flight control. Please pay attention to ensure a stable working voltage.
2. For Delta wing/V-tail models, please turn off the internal mixing control of the remote control firstly.
3. If micro adjustments are made during flight, please perform power off and restart or neutral point calibration after landing.

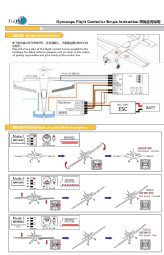


Not suitable for children under 14 years.



Made In China

Documents / Resources

	<p>PLANET HOBBY Gyroscope Flight Controller [pdf] Instruction Manual Gyroscope Flight Controller, Flight Controller, Controller</p>
---	---

References

- [User Manual](#)