



# planeo 238A Smart Switch User Manual

[Home](#) » [planeo](#) » planeo 238A Smart Switch User Manual 



Switch  
238A

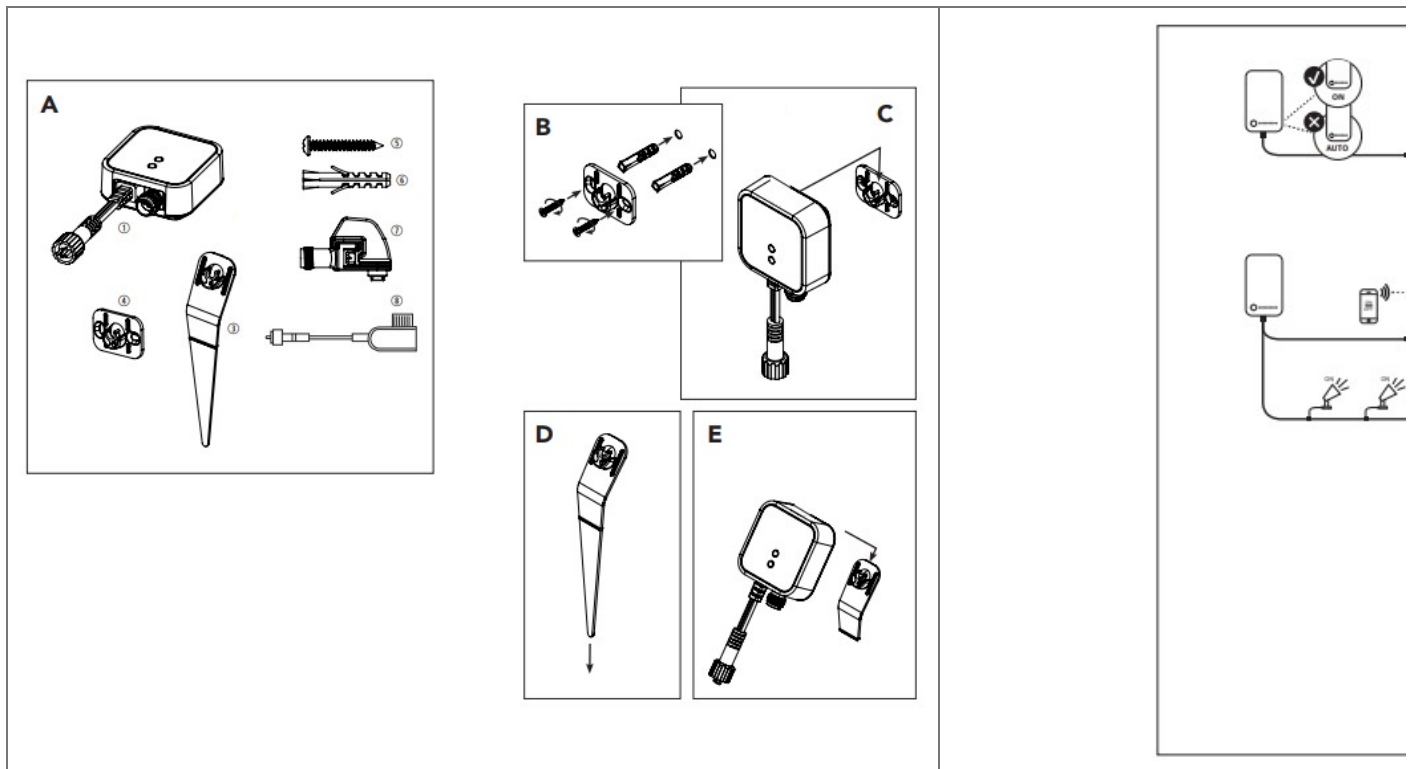


User manual

## Contents

- 1 238A Smart Switch
- 2 SMART
- 3 The system
- 4 PRODUCT DESCRIPTION
- 5 SPECIFICATIONS SWITCH
- 6 CONTENT OF THE PACKAGING
- 7 INSTALLATION
- 8 PAIRING SWITCH SMART
- 9 RESETTNG SWITCH SMART
- 10 INSTALLATION OF THE LIGHTS
- 11 SAFETY
- 12 Documents / Resources
  - 12.1 References

## 238A Smart Switch



## SMART

Start immediately:

1. Download the app



Available on



<https://qrco.de/beGoAt>

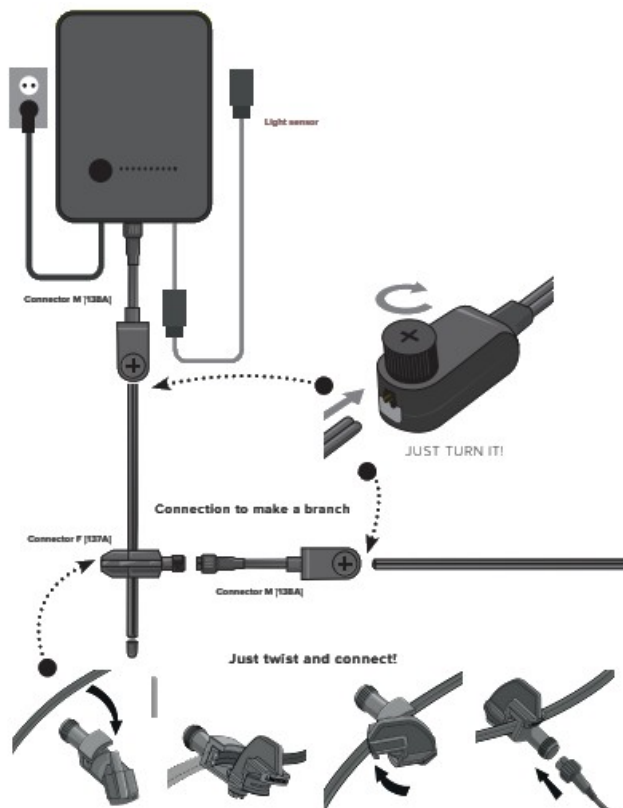
2. Install the Switch

**Note:** Make sure that your WiFi router is set on 2.

4GHz. If your router is set on 5GHz, then you need to change your network's Wi-Fi frequency to 2.4 GHz in the settings menu of the router.

Please log into your router or contact your internet provider for this.

## The system



Thank you for purchasing the planeo Switch Smart.

This document contains the required information for correct, efficient and safe use of the product. Consult the user manual of your transformer for more information about the installation and connection of your lighting plan or visit our website [www.planeo.com](http://www.planeo.com).

Read the information in this manual carefully before using the product. Keep this manual near the product for consultation in the future.

## PRODUCT DESCRIPTION

The planeo Switch Smart is a smart switch intended for use in combination with the Lightpro 12-Volt outdoor lighting system. To control the Switch, a suited tablet or smartphone is required with the (free) Lightpro app installed.

This product may only be used in combination with the Lightpro 12-Volt system. Any modification may have an impact on the safety, warranty, and correct operation of the product and/or other parts of the system.

## SPECIFICATIONS SWITCH

Product	planeo Switch Smart
Article number	238A
Usage (max.)	1W
Maximum capacity (max.	150W
Dimensions (H x L x W)	230 x 68 x 33 mm
Protection class	IP44
Input	12V AC/DC

## CONTENT OF THE PACKAGING

[Figure A]

1. Switch
2. Ground spike
3. Wall mounting bracket
4. Screws
5. Plugs
6. Lightpro F-connector (art. no. 137A)
7. Lightpro M-connector (art. no. 138A)



Verify whether all parts are included in the packaging.

For questions about parts, service, complaints, or other things, you can always contact us.

Email: [info@planeo.com](mailto:info@planeo.com)

## INSTALLATION

When placing the Switch, keep the following regulations in mind:

Attention: for the correct operation of the Switch, your transformer must be permanently switched on.

### Option 1: Wall mounting

[Figure B]

1. Fix the wall bracket to the wall with the screws supplied.

[Figure C]

2. Place the Switch in the wall bracket.

### Option 2: Ground placement

[Figure D]

1. Push the spike into the ground up to the marking.

[Figure E]

2. Place the Switch on the spike.

## PAIRING SWITCH SMART

1. Click '+' at the top right of the app.
2. Click 'Add device'.
3. Choose 'Switch (Wi-Fi)'.
4. Make sure you are connected to a 2,4 GHz Wi-Fi network.
5. Confirm whether the device is flashing.
6. The app will now connect to the Switch Smart. This can take up to 2 minutes.
7. A notification appears as soon as the Switch Smart is connected.

## RESETTING SWITCH SMART

Press and hold the reset button for 5 seconds.

## INSTALLATION OF THE LIGHTS

- Install the products in the desired position and lay the cables so they can be comfortably connected to the transformer or main cable.
- If products are provided with a drain hole for water, this hole must be pointing downwards.
- Use non-corrosive fixing materials (supplied as standard) if you want to bolt the products down.
- Connect the lights to the main cable by using the connector as shown in figure on page 5.
- Consult the manual of your transformer for more information.

## SAFETY

- Always fit this product so that it can still be accessed for servicing or maintenance. This product must not be permanently embedded or bricked in.
- Turn off the system by pulling the plug of the transformer from the socket for maintenance.
- Regularly clean the product with a soft, clean cloth.  
Avoid abrasives that can damage the surface.
- Clean products with stainless steel parts with a stainless steel cleaning agent once per six months.
- Do not use a high pressure washer or aggressive chemical cleaning agents when cleaning the product. This can cause irreparable damage.
- Protection class III: this product may only be connected to safety extra-low voltage up to a maximum of 12 Volt.
- This product is suitable for outside temperatures of: -20 to 50 °C.
- Do not use this product in areas where combustible gases, fumes or liquids may be stored.



The product meets the requirements of the applicable EC, UK and EAEU guidelines.



For questions about parts, service, any complaints or other matters, you can contact us at any time.

E-mail: [info@planeo.com](mailto:info@planeo.com)

Discarded electrical equipment must not be put in the household waste. If possible, take it to a recycling company. For details of recycling, contact a municipal waste processing company or your dealer.




6 year warranty – visit our website at [www.planeo.com](http://www.planeo.com) for warranty conditions.






UK Authorised Representative  
(for authorities only)  
ProductIP (UK) Ltd.  
8, Northumberland Av.  
London WC2N 5BY

## Documents / Resources

	<p><a href="#">planeo 238A Smart Switch</a> [pdf] User Manual 238A, 238A Smart Switch, Smart Switch, Switch</p>
---	---

## References

-  [Shop floor, garden & home products online at planeo](#)
-  [Boden-, Garten- & Wohnwelt-Produkte bei planeo online kaufen](#)
-  [Achetez des produits pour sols, jardins et cadres de vie en ligne sur planeo](#)
- [User Manual](#)

### Manuals, Privacy Policy

This website is an independent publication and is neither affiliated with nor endorsed by any of the trademark owners. The "Bluetooth®" word mark and logos are registered trademarks owned by Bluetooth SIG, Inc. The "Wi-Fi®" word mark and logos are registered trademarks owned by the Wi-Fi Alliance. Any use of these marks on this website does not imply any affiliation with or endorsement.