



# PIXIE SMC3BTAS Multifunction Remote Control Button Instruction Manual

[Home](#) » [PIXIE](#) » PIXIE SMC3BTAS Multifunction Remote Control Button Instruction Manual 



Installation Instructions  
Multifunction  
Remote Control Button G3  
SMC3BTAS

## Contents

- [1 SMC3BTAS Multifunction Remote Control Button](#)
- [2 Product Introduction](#)
- [3 Specifications and Capabilities](#)
- [4 Installation process](#)
- [5 Operations](#)
- [6 Battery replacement](#)
- [7 Documents / Resources](#)
  - [7.1 References](#)
- [8 Related Posts](#)

**SMC3BTAS Multifunction Remote Control Button**



## WARNING



This product contains lithium coin battery



KEEP BATTERIES OUT OF REACH OF CHILDREN



Swallowing can cause severe or fatal injuries within 2 hours. Seek immediate medical attention if swallowed.

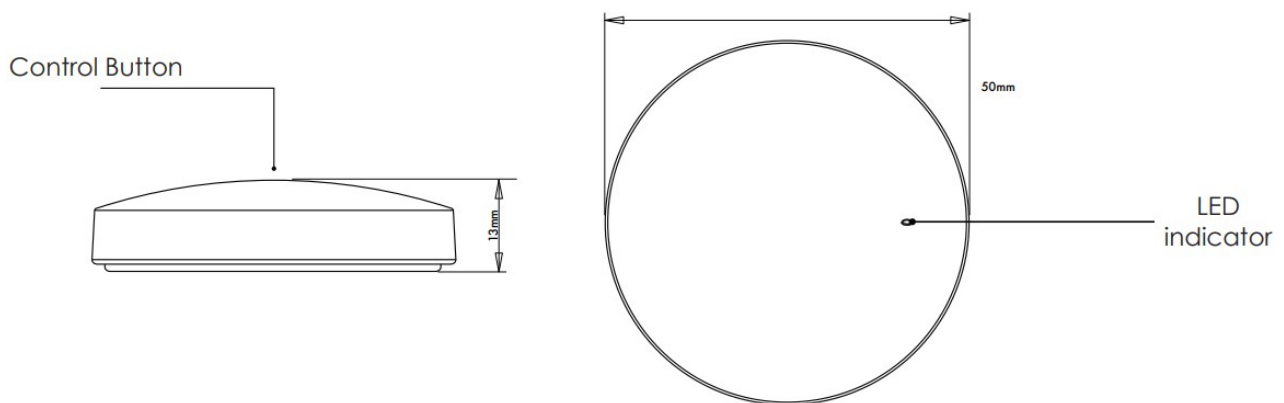
## Product Introduction

The PIXIE Multifunction Remote Control Button is the 3rd generation multifunction remote control button, that is portable and powered by coin battery. Without the need of running wires, this product brings huge flexibility for the application.

### 1.1 Product Features

- Coin battery powered, portable without worrying wiring availability
- LED indicator colour selectable – blue or amber
- PIXIE Multifunction Remote Control button Gen 3, can pair with a master device, a group or scenes

### 1.2 Product Parts



## Specifications and Capabilities

Product Description	Model NO.	Battery	Colour	Dimensions L x W x H (mm)	Weight (g)
PIXIE Multifunction Remote Control Mech	SMC3BTAS	CR2032 * 1	White	50 x 50 x 13	16

Product Application	Interior residential or commercial	Product Installation	Portable
Operating Ambient Temperature	0°C- 40°C	Storage Ambient Temperature	0°C- 60°C
Operating Humidity	0-85% RH, NC	Storage Humidity	0-85% RH, NC
IP Rating	IP20		

## Installation process

3.1 – Before installation, for optimum signal communication, the maximum distance between a PIXIE device and the controlled device is 15 metres.

3.2 – Launch pairing mode for PIXIE Master device

3.3 – Launch pairing mode of SMC3BTAS within 30 seconds.

**Note:** If the paired PIXIE product changes HOME setup in the PIXIE Apps or reset to factory, the pairing process will need to be repeated.

## Operations

### 4.1 Setting operations

Operation	Function	LED Indicator	Remark
4 Clicks	Enter pairing mode, the mode lasts 10 seconds	Quickly flash in blue for 10 seconds	<ul style="list-style-type: none"> <li>– Can pair with a PIXIE master device, a group or two scenes</li> <li>– After a successful pairing, pairing mode will end.</li> </ul> Pressing the button during pairing mode will cancel and exit pairing mode – LED indicator will flash twice, and stay solid blue for 2 seconds to indicate the pairing is successful
5 Clicks	Change the LED indicator colour	–	Toggle LED indicator colour selectable – blue or amber
9 Clicks	Reset the product to factory default	Slowly flash blue for 3 seconds	All the previous pairing will be cleared after a successful reset

### 4.2 Control operations – paired with a master device

Operations when configured to control a device

Paired device Operation	PIXIE Smart Dimmer	PIXIE Smart RGB Strip, RGB Strip Controller	PIXIE Smart Single Color Strip, Single Color Strip Controller
1 Click	Turn ON/OFF. When turning the light on, it will work on the last used brightness setting	Turn ON/OFF. When turning the light on, it will work on the last used brightness setting	Turn ON/OFF. When turning the light on, it will work on the last used brightness setting
2 Clicks	Shortcut to the maximum brightness	Shortcut to the maximum brightness	Shortcut to the maximum brightness
3 Clicks	Switch to the next color temperature, which circulates in Warm White->Cool White-> Daylight. For S9842 downlight only.	Switch to the next color. Color circulates in White-> Red->Green->Blue.	NA
Long Press	When the light is on, long press the button to dim up or down, release the button to stop. When the light is off, long press the button to turn on the light at minimum brightness and increase brightness, release the button to stop.	When the light is on, long press the button to dim up or down, release the button to stop. When the light is off, long press the button to turn on the light at minimum brightness and increase brightness, release the button to stop.	When the light is on, long press the button to dim up or down, release the button to stop. When the light is off, long press the button to turn on the light at minimum brightness and increase brightness, release the button to stop.

#### 4.3 Control operations – paired with a group

Operations when configured to control a group

Operation	Result	Remark
1 Click	Turn ON/OFF the Group	NA
2 Clicks	Shortcut to the maximum brightness	Dimmable product group only
3 Clicks	Switch colour/colour temperature	Subject to the product group functionality
Long Press	Switch colour/colour temperature	Dimmable product group only

#### 4.4 Control operations – paired with scenes

Operations when configured to control scenes

Operation	Result
1 Click	Activate scene 1
2 Clicks	Activate scene 2

### Battery replacement

When the battery is low, the operation will not work properly. Please follow the steps below to replace the battery.

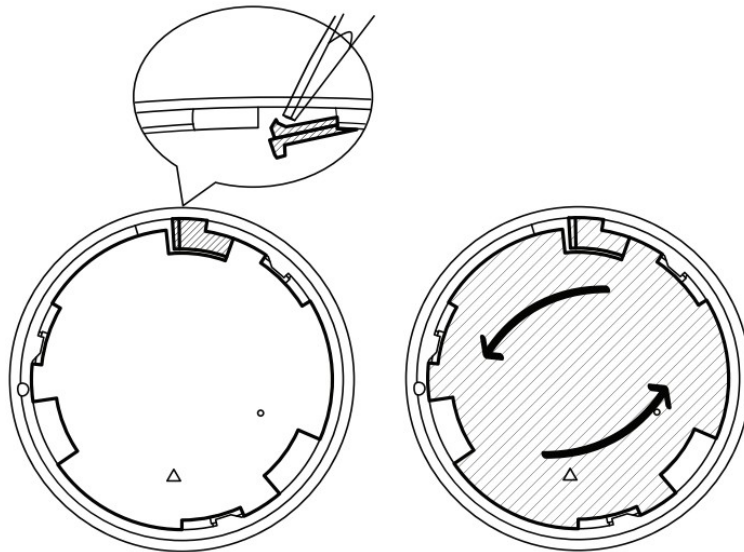
5.1 – Locate the tab as indicated in the image, use screwdriver to slightly push the tab a bit farther away from the body.

5.2 – Meanwhile, rotate the back cover anticlockwise to remove it.

5.3 – Remove the battery

5.4 – Insert a new CR2032 lithium 3V coin battery with positive side facing up

5.5 – Replace the cover to align with the slot, rotate the cover clockwise until it stops. warning: The battery might cause injury to small children. Keep away from small children.



Scan QR code or go to App store (IOS) or Google Play (Android) to download the free PIXIE app to your smart phone.

IOS: Requires IOS 6.0 or later. Compatible with iPhone, iPad and iPad touch Android: Requires Android 4.4 or above, devices must support Bluetooth 4.0 Specifications above are for reference only and may vary without prior notice.



<https://www.pixie.app/download/pixie/>  
<https://www.pixie.app/download/pixieplus/>

**Warranty** – In accordance with SAL's standard terms and conditions of sale, SAL warrant this product to be free from defects in materials and or workmanship for a period as stated below for goods not subject to incorrect installation, maintenance, operation, mishandling, environmental, unauthorised modifications or electrical operating conditions outside the nominated product specification as detailed in these installation instructions. The benefits to you given by this warranty are in addition to other rights and remedies you have under law. Our goods come with guarantees that cannot be excluded under the Australian Consumer Law. You are entitled to a replacement or refund for a major failure and compensation for any other reasonably foreseeable loss or damage. You are also entitled to have the goods repaired or replaced if the goods fail to be of acceptable quality and the failure does not amount to a major failure.

**Warranty term** – Residential usage (12) months, Commercial usage (12) months, Replaceable lamps (where supplied) (12) months and batteries where supplied (12) months from date of purchase.

#### **How to make a claim?**

**Step #1** – Within 30 days of the fault discovery, please contact the original place of the SAL product purchase during standard (local) business hours, with the following information (a) proof of purchase (b) description and quantity of the claimed fault (c) address of installation. (d) operating hours of the product.

**Step #2** – It is then the responsibility of the original place of product purchase to report the matter to SAL aftersales;

NSW   ACT	SAL National Pty Ltd, 40 Biloela Street Villawood NSW 2163	P # 02 9723 3099
QLD	SAL National Pty Ltd, 36 Whitelaw Place Richlands QLD 4077	P # 07 3879 5999
VICT   TAS   SA   NT	SAL National Pty Ltd, 46-48 Keys Road Moorabbin Victoria 3189	P # 03 9532 3168
WA	SAL National Pty Ltd, 29 Beringarra Av Malaga WA 6090	P # 08 9248 7458

**Step #3** – Upon review of your claim and if the product is required to be returned to SAL for technical evaluation, then at the owners expense the product must be returned to SAL as per the above nominated locations.

**Step #4** – Pending the evaluation, the claim will be validated resulting in the product being repaired or replaced with the same or best equivalent product at the discretion of SAL, or rejected if the product fault was found to be caused by conditions beyond the responsibility of SAL warranty obligations. Consideration of installation, product removal, return freight and or testing fees are not the responsibility of SAL.

1. The product wireframe drawings in this document are intended for illustration purposes only and may differ from the final physical product.
2. The installation instruction is subject to change without prior notice.

PIXIE is a trademark of SAL National Pty Ltd.

COPYRIGHT © 2022 This document is copyright by SAL National Pty Ltd. Except as permitted under the relevant law, no part of this application note may be reproduced by any process without written permission of and acknowledgment to SAL National.

DISCLAIMER: SAL National reserves the right to alter the specifications, designs or other features of any items and to discontinue any items at any time without notice and without liability. While every effort is made to ensure that all information in this application note is correct, no warranty of accuracy is given and SAL National shall not be liable for any error.

TRADEMARKS: The identified trademarks and copyrights are the property of SAL National Pty Ltd unless otherwise noted.



Contact Information  
SAL National Pty Ltd.

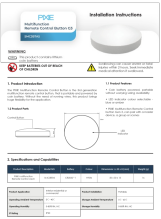
Web: [www.sal.net.au](http://www.sal.net.au)

ABN: 21 633 189 474

All Enquiries:

+61 2 9723 3099

[pixiesupport@sal.net.au](mailto:pixiesupport@sal.net.au)



[PIXIE SMC3BTAS Multifunction Remote Control Button](#) [pdf] Instruction Manual  
SMC3BTAS Multifunction Remote Control Button, SMC3BTAS, Multifunction Remote Control B  
utton, Remote Control Button, Control Button, Button

References

- [Welcome to SAL - Lighting a Smarter Future - SAL](#)
- [User Manual](#)