



PIXIE Fan with Light App Instructions

[Home](#) » [PIXIE](#) » PIXIE Fan with Light App Instructions 

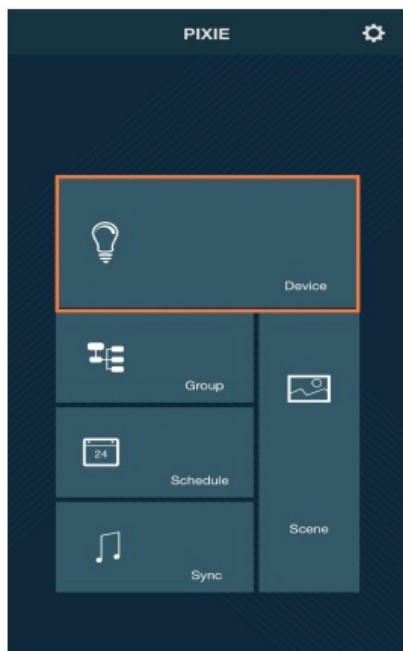
PIXIE Fan with Light App Instructions



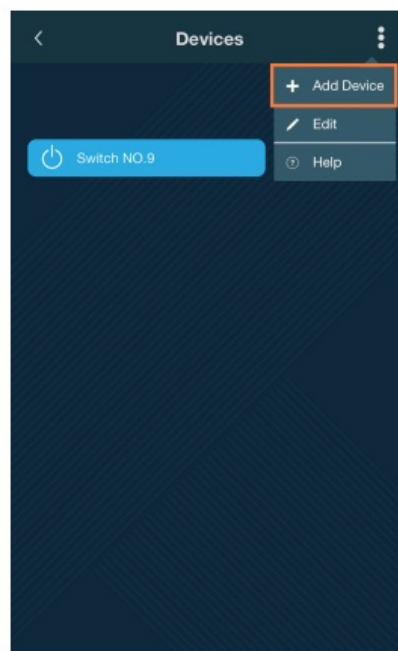
Contents

- 1 Add Fan into the APP
- 2 Fan controlling via PIXIE (Basic)
- 3 Fan controlling via PIXIE (Advanced)
- 4 Documents / Resources
- 5 Related Posts

Add Fan into the APP



Tap "Device" on Home Page

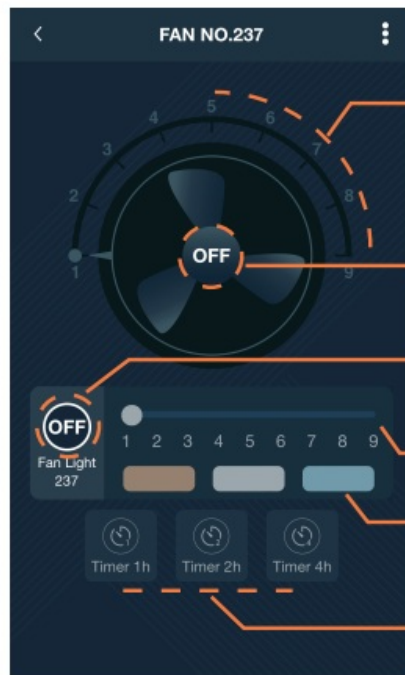
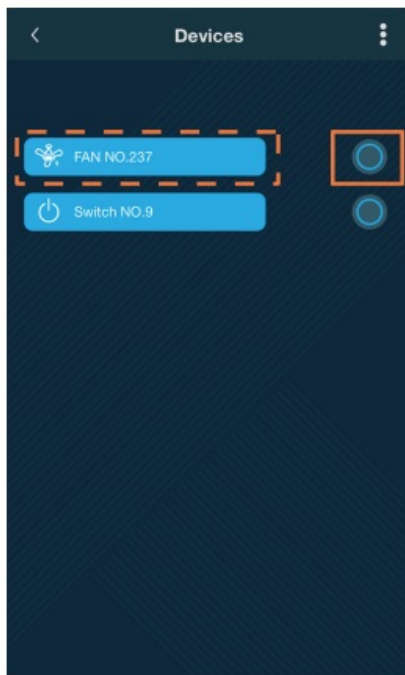


Tap "⋮" from right of coner.
Select "Add device"



Locate the target Fan.
Tap on "Add" button, then wait
and "Save" as app instructed.

Fan controlling via PIXIE (Basic)



Adjust Fan speed

ON/OFF Fan

ON/OFF Fan light

Adjust light brightness

Change light color temperature accordingly

Choose preset Timer off function

Tap the marked circle to turn on or off Fan & light on the device list.
Tap the device name to get into the detailed device page.

Fan speed and light control as indicated.

Fan controlling via PIXIE (Advanced)



Rename the Fan

Choose to enable Winter mode

Choose to be excluded from All Device's Group control

Choose to enable Sleep Mode



Adjust Sleep Mode Timer Duration

Choose to enable Fade effect

Choose the expected status when Sleep Mode is completed



Sleep Mode is selectable when Fan is on

Tap "⋮" from right of coner. Select "Edit"

Edit Fan information, i.e., name, summer/winter modes & some certain function.

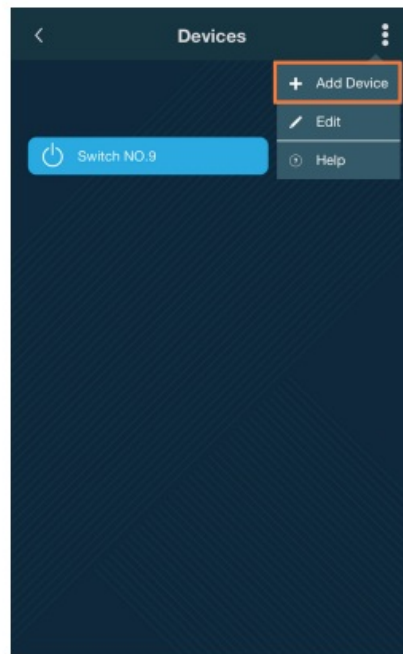
Edit Sleep Mode details.

After enabling Sleep Mode, the Sleep Mode icon is added in the detailed device page and selectable

Add Fan into the APP



Tap "Device" on Home Page

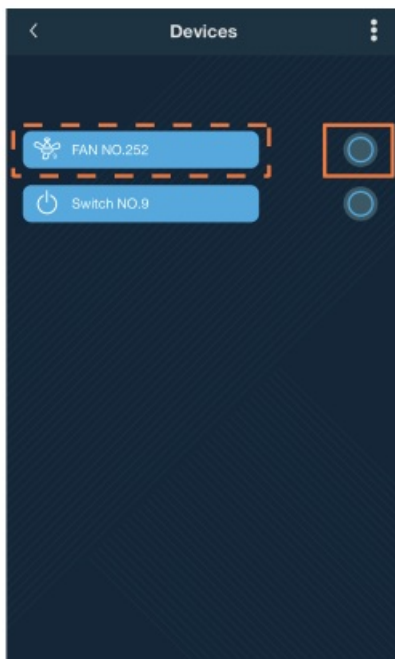


Tap "⋮" from right of coner.
Select "Add device"

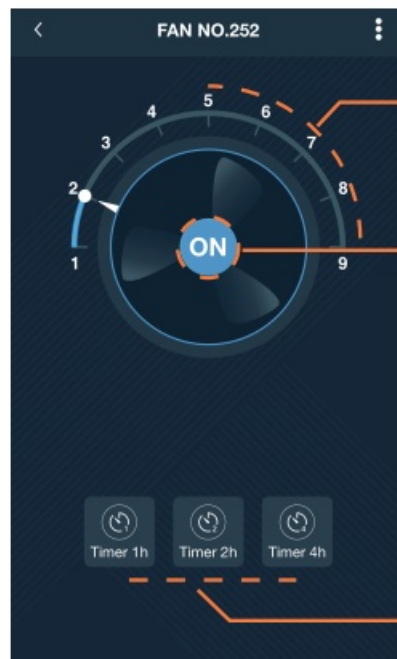


Locate the target Fan.
Tap on "Add" button, then wait
and "Save" as app instructed.

Fan controlling via PIXIE (Basic)



Tap the marked circle to turn on or off
the Fan on the device list.
Tap the device name to get into the
detailed device page.



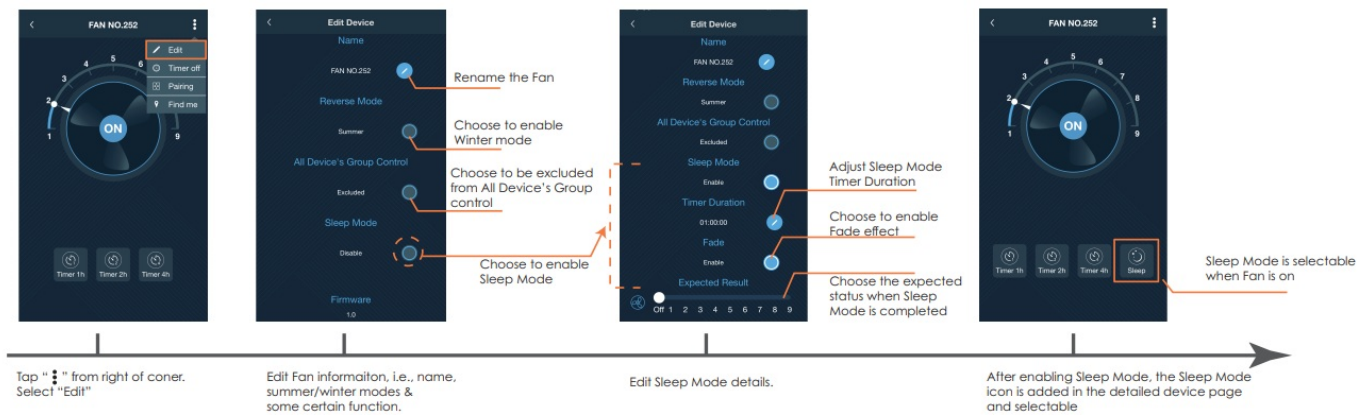
Adjust Fan speed

ON/OFF Fan

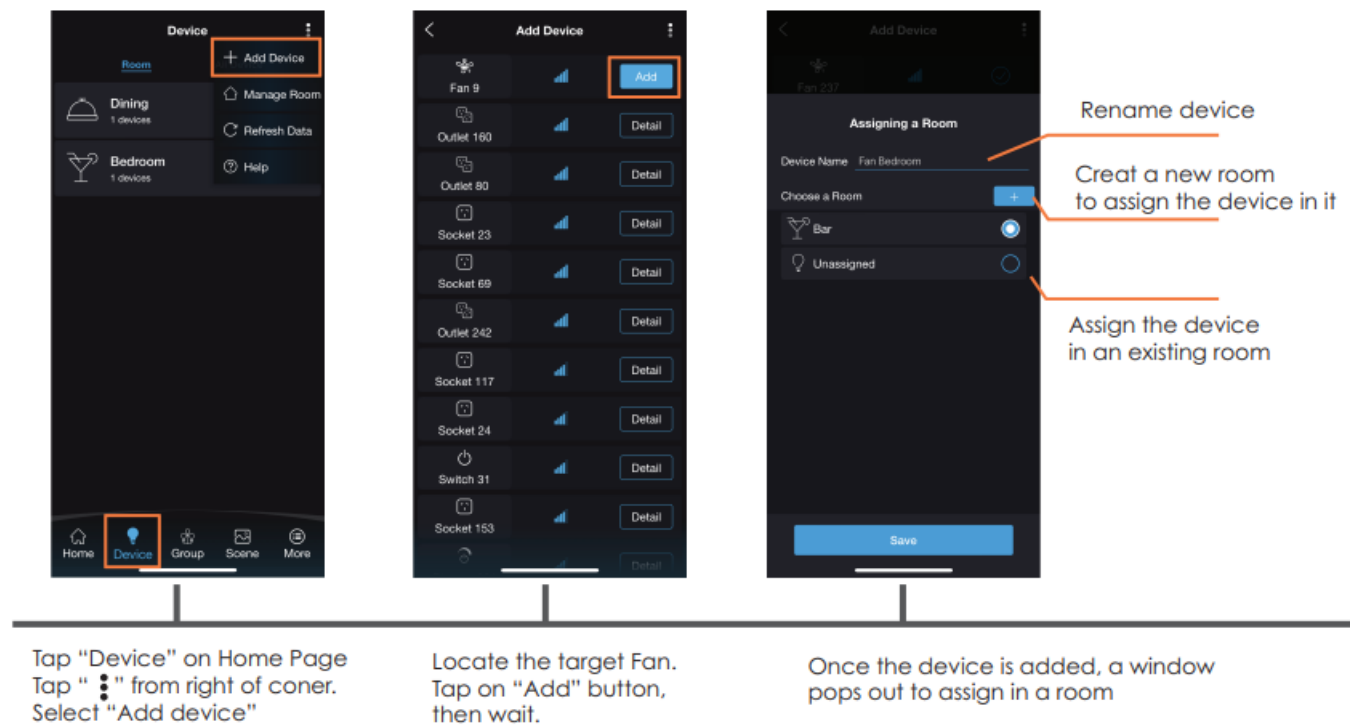
Choose preset Timer off function

Fan speed control
as indicated.

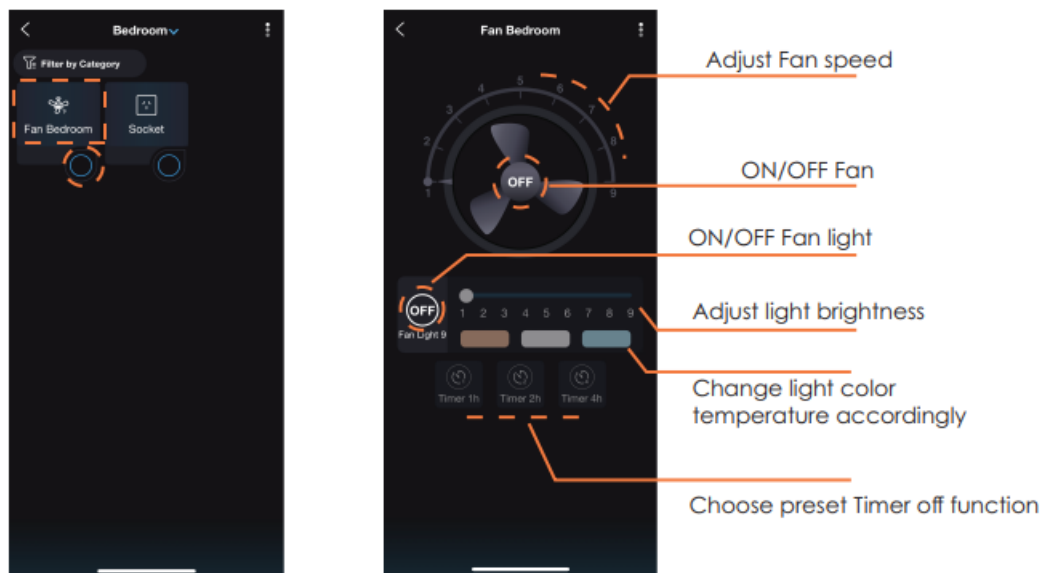
Fan controlling via PIXIE (Advanced)



Add Fan into the APP



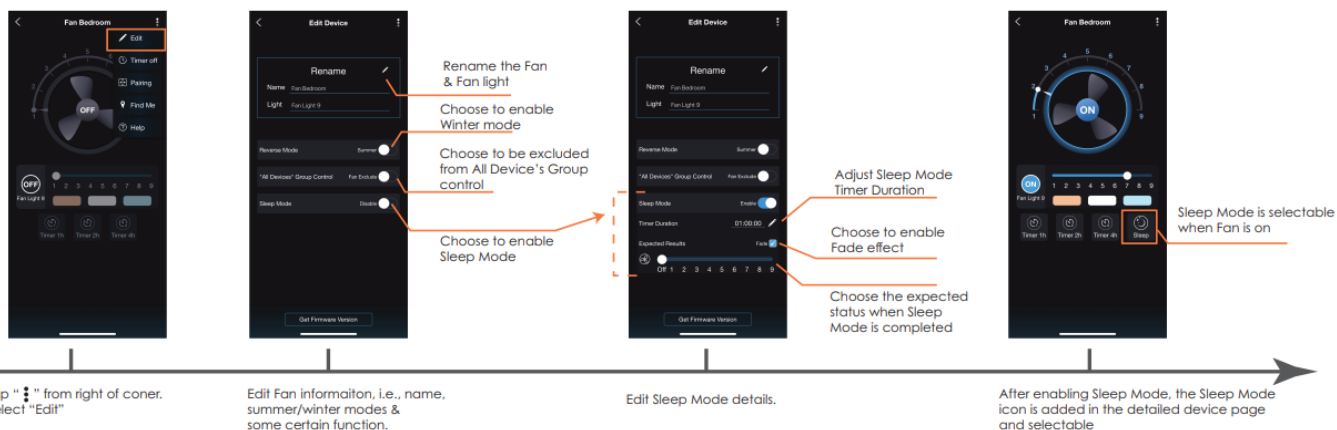
Fan controlling via PIXIE PLUS (Basic)



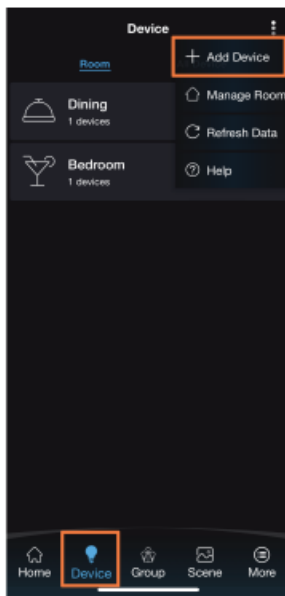
Tap the marked circle to turn on or off the Fan on the device list.
Tap the device name to get into the detailed device page.

Fan speed and light control as indicated.

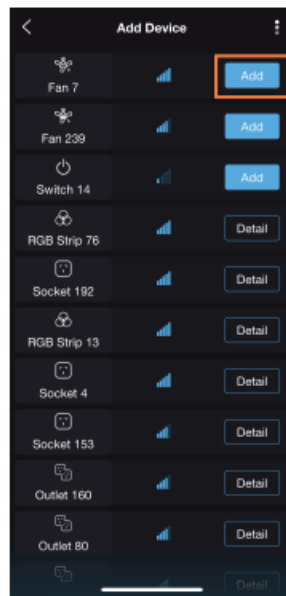
Fan controlling via PIXIE PLUS (Advanced)



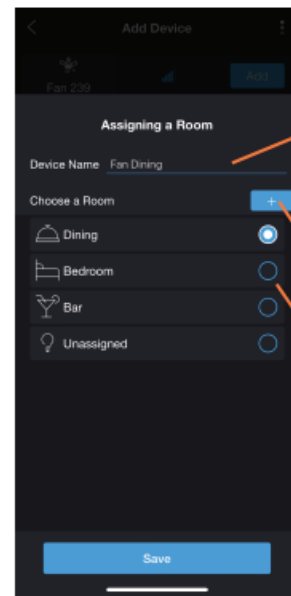
Add Fan into the APP



Tap "Device" on Home Page
Tap "⋮" from right of coner.
Select "Add device"



Locate the target Fan.
Tap on "Add" button,
then wait.



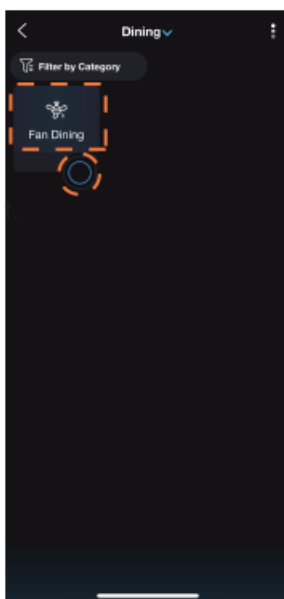
Rename device

Creat a new room
to assign the device in

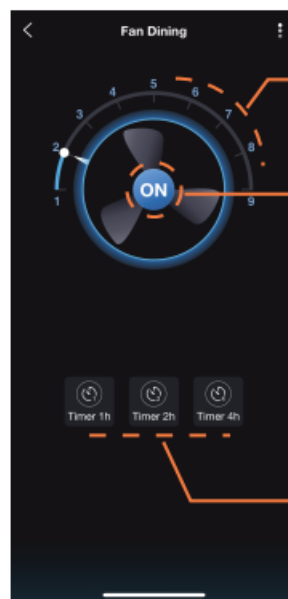
Assign the device
in an existing room

Once the device is added, a window
pops out to assign in a room

Fan controlling via PIXIE PLUS (Basic)



Tap the marked circle to turn on or off
the Fan on the device list.
Tap the device name to get into the
detailed device page.



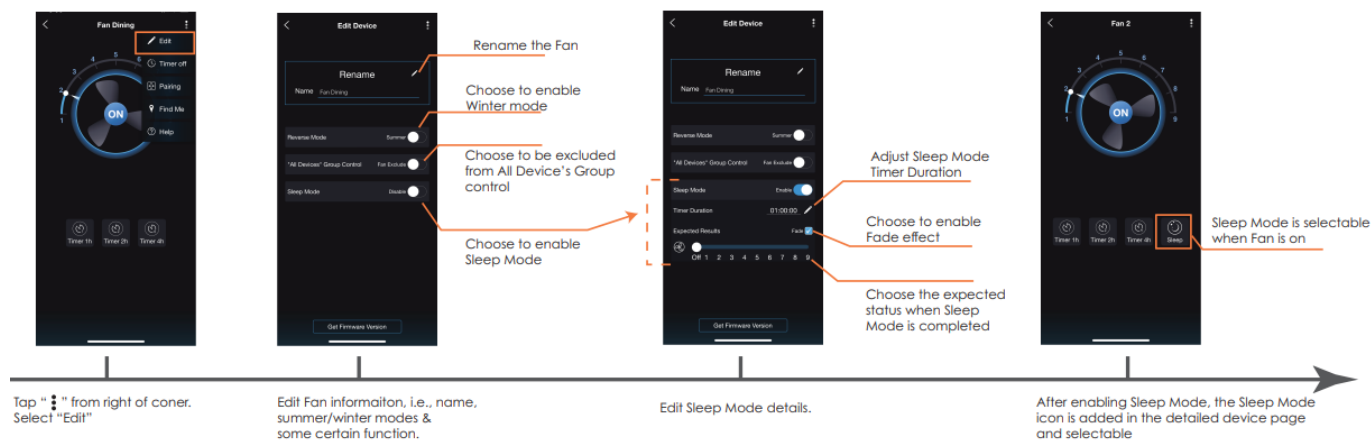
Adjust Fan speed

ON/OFF Fan

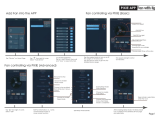
Choose preset Timer off function

Fan speed control
as indicated.

Fan controlling via PIXIE PLUS (Advanced)



Documents / Resources

	<p>PIXIE Fan with Light App [pdf] Instructions Fan with Light App, Fan with Light, App</p>
---	---