



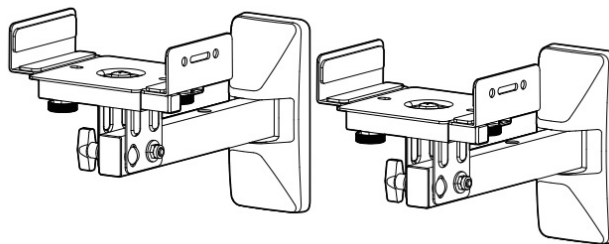
# Pipishell PISM03 Speaker Wall Mounts Instruction Manual

[Home](#) » [Pipishell](#) » Pipishell PISM03 Speaker Wall Mounts Instruction Manual 

## Contents

- [1 Pipishell PISM03 Speaker Wall Mounts Instruction Manual](#)
- [2 IMPORTANT SAFETY INFORMATION](#)
- [3 WARNING:](#)
- [4 Read More About This Manual & Download PDF:](#)
- [5 Documents / Resources](#)
  - [5.1 References](#)

## Pipishell PISM03 Speaker Wall Mounts Instruction Manual



## IMPORTANT SAFETY INFORMATION

- Please carefully read all instructions before attempting. If you have any questions or concerns, contact our technical support line at
- 1-800-556-9829 (US/CA) / 44-808-196-3885 (UK) or customer service at [support@pipishell.net](mailto:support@pipishell.net).
- CAUTION: Avoid potential injuries and property damage!
- Do not use this product for any purpose that is not explicitly specified in this Do not exceed weight capacity. We

are not liable for damage or injury caused by improper mounting, incorrect assembly or inappropriate use.

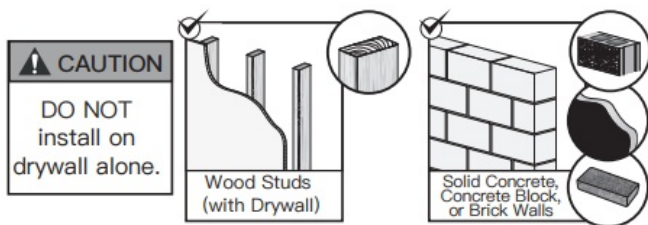
- This product is designed for installation on wood studs, solid concrete, concrete block and brick walls – Do not install on drywall alone.

## Weight Restrictions

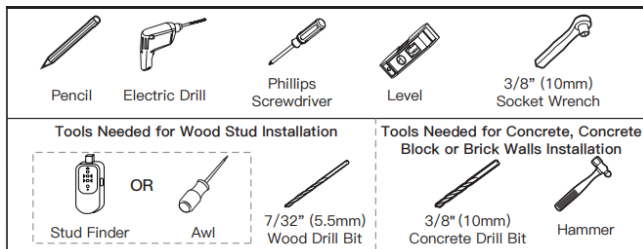


If the equipment you intend to use weighs more than the leading to possible injury maximum weight indicated, this mount is not compatible.

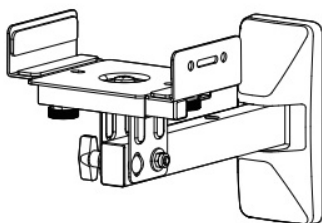
## Verify Your Wall Construction



## Tools Needed (NOT Included)



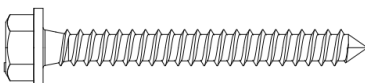
## Supplied Parts and Hardware

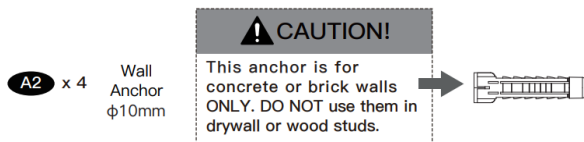


Speaker Wall Mount

**01** x 2

**A1** x 4 ST 1/4 x 2 3/4"





## Step 1 Attach the Speaker Mount to the Wall

For wood stud installation, follow **STEP 1A**.

For solid concrete, concrete block, or brick walls installation, follow **STEP 1B**.

### Step 1A Wood Stud Option

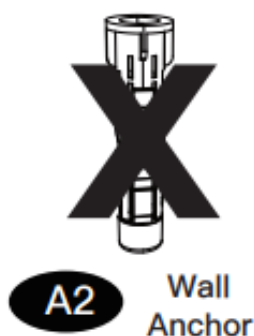
#### WARNING:

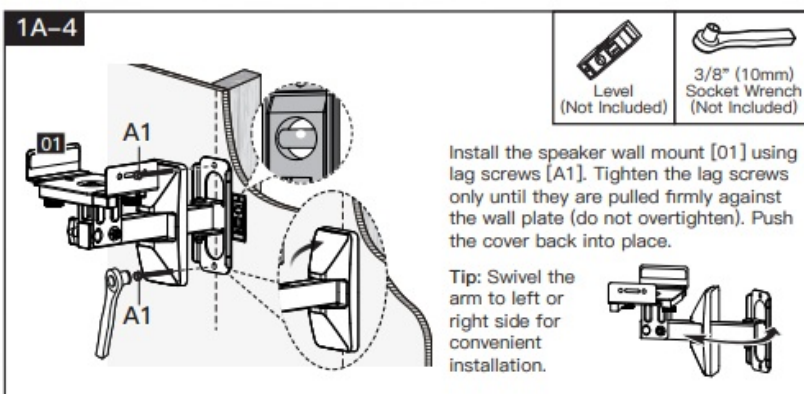
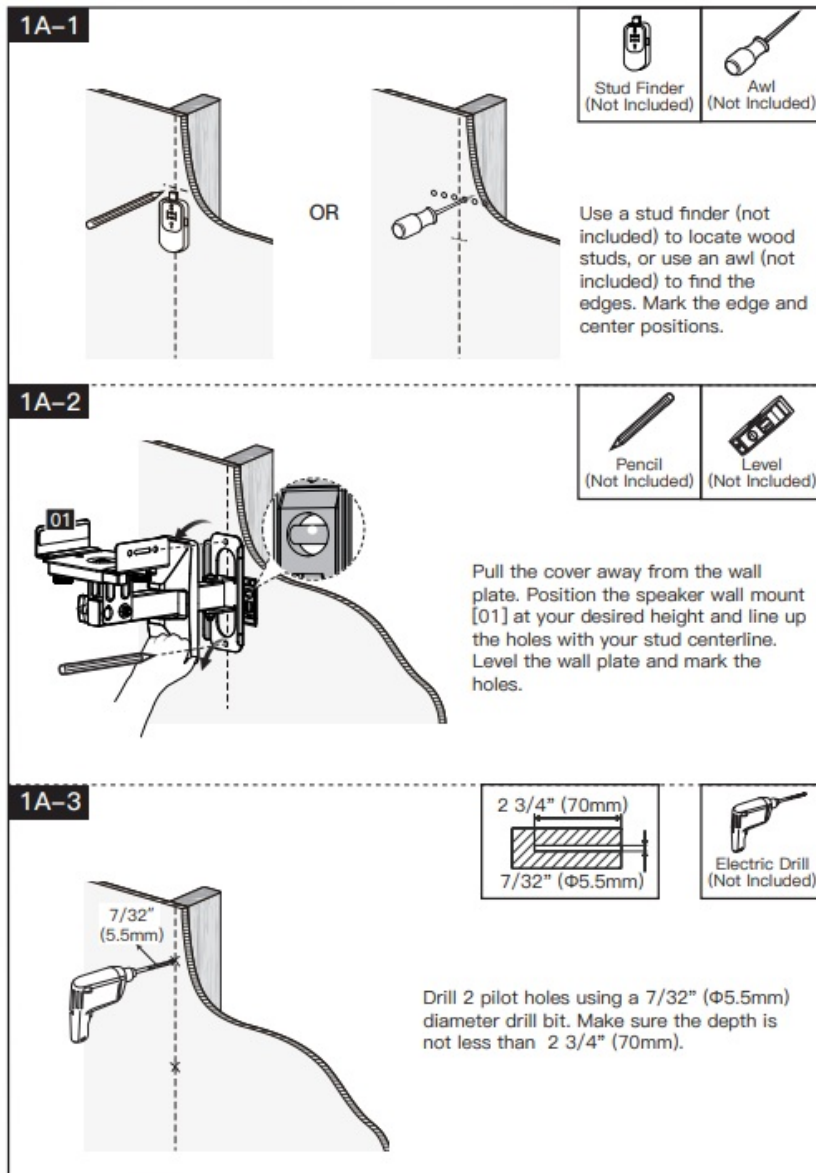
- Avoid potential injury or property damage! DO NOT use a drill for tightening the lag screws [A1]. Only use a socket DO NOT over-tighten the lag screws [A1]. Tighten the lag screws [A1] only until they are pulled firmly against the wall plate.
- **DO NOT USE ANCHOR [A2] FOR THIS STEP!**
- Ensure the speaker mount [01] is securely fastened to the **X**

wall before continuing to the next step.

- Any material covering the wall must not exceed 5/8" (16mm).
- Nominal wood stud size: common 2 x 4" (51 x 102mm) minimum 1½ x 3½" (38 x 89mm). **A2 Wall**

Stud center must be verified.



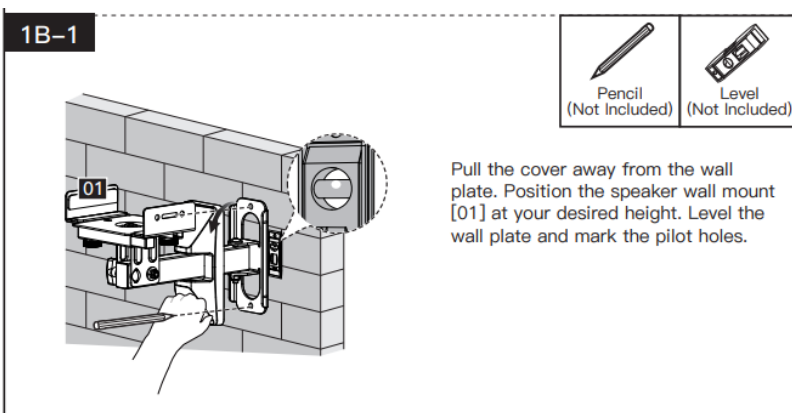
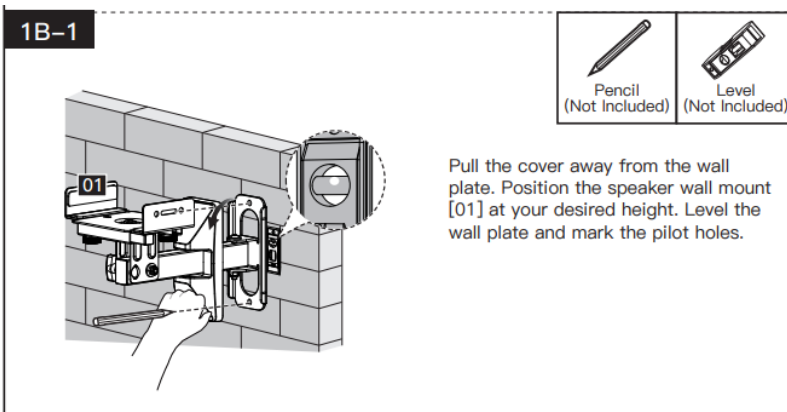
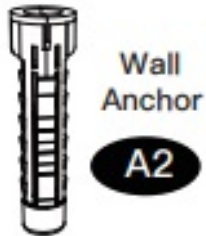


Step 1B Solid Concrete, Concrete Block, or Brick Walls Option.

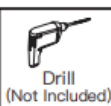
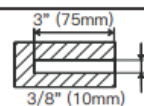
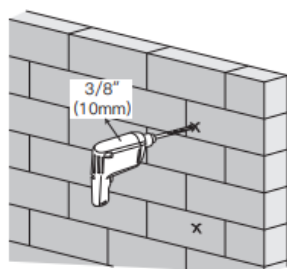
### WARNING:

- Avoid potential injury or property damage! DO NOT use a drill for tightening the lag screws [01]. Only use a socket DO NOT over-tighten the lag screws [A1]. Tighten the lag screws [A1] only until they are pulled firmly against the wall plate.
- Ensure the speaker mount [01] is securely fastened to the wall before continuing to the next

- Any material covering the wall must not exceed 5/8" (16mm).
- Mount the speaker mount directly onto the concrete
- Minimum solid concrete thickness: 203mm (8").
- Minimum concrete block size: 203 x 203 x 406mm (8 x 8 x 16").
- Never drill into the mortar between

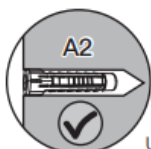
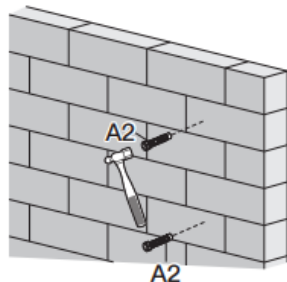


# 1B-2



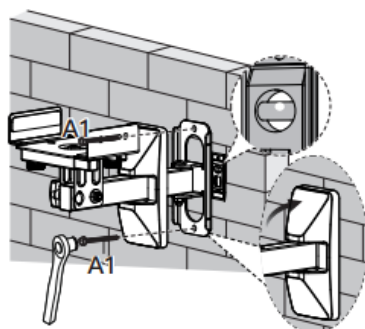
Drill 2 pilot holes using a 3/8" (10mm) diameter drill bit. Make sure the depth is not less than 3" (75mm). Never drill into the mortar between blocks.

# 1B-3



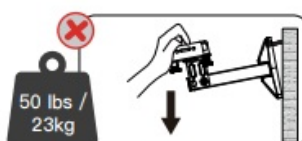
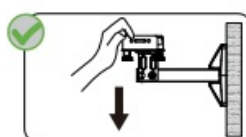
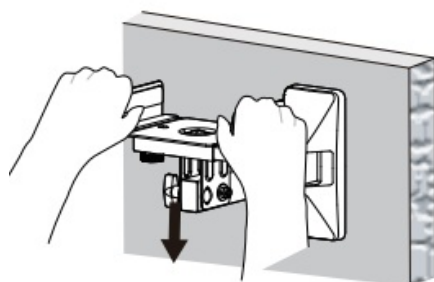
Use the hammer to tap anchors [A2] into the wall. Be sure the anchors [A2] are seated flush with the concrete or brick surface.

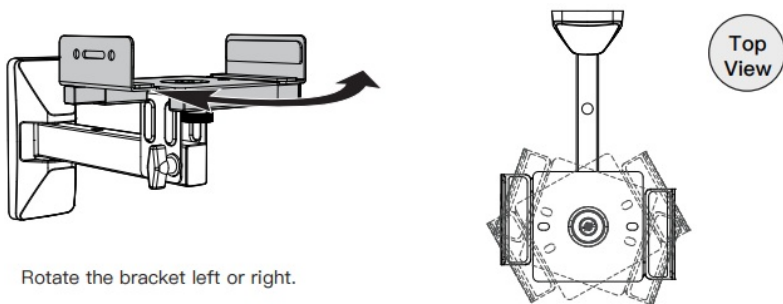
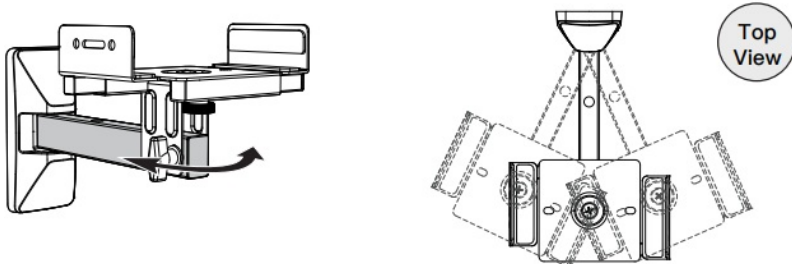
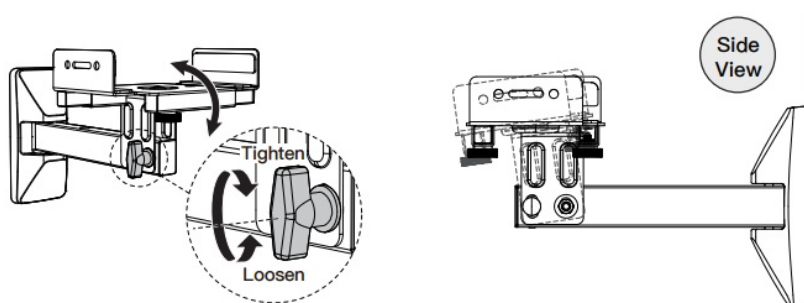
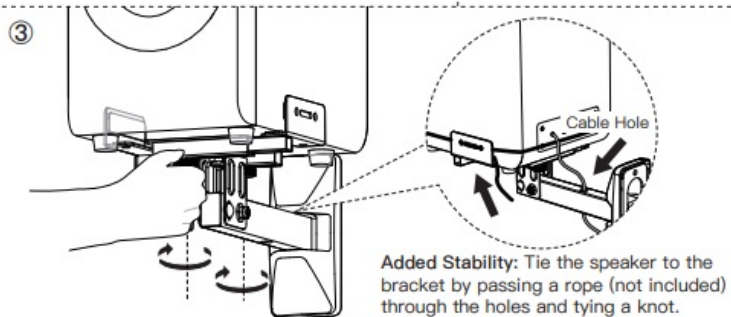
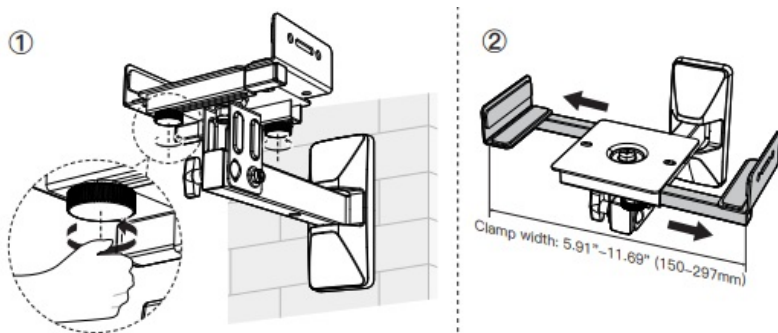
# 1B-4



Install the speaker wall mount [01] using lag screws [A1] and anchors [A2]. Tighten the lag screws only until they are pulled firmly against the wall plate (do not overtighten). Push the cover back into place.


Tip: Swivel the arm to left or right side for convenient installation.





**Read More About This Manual & Download PDF:**

## Documents / Resources

	<p><a href="#">Pipishell PISM03 Speaker Wall Mounts</a> [pdf] Instruction Manual PISM03 Speaker Wall Mounts, PISM03, Speaker Wall Mounts, Wall Mounts, Mounts</p>
---	---

## References

- [Pipishell Heavy Duty Full Motion TV Wall Mounts Make Your Life Better](#)
- [User Manual](#)