



# Pipishell PISC03B Storage Chest Instruction Manual

[Home](#) » [Pipishell](#) » Pipishell PISC03B Storage Chest Instruction Manual 

## Contents

- [1 Pipishell PISC03B Storage Chest](#)
- [2 Product Information](#)
- [3 Product Usage Instructions](#)
- [4 Contents](#)
- [5 INSTALLATION](#)
- [6 FAQ'S](#)
- [7 Documents / Resources](#)
  - [7.1 References](#)
- [8 Related Posts](#)



## Pipishell PISC03B Storage Chest



### Product Information

#### Specifications

- **Model:** PISC03 / PISC03B
- **Color:** N/A
- **Dimensions:** N/A
- **Weight:** N/A
- **Material:** N/A

### Product Usage Instructions

#### Assembly

To assemble the storage chest, please follow the steps below:

1. Gather all the required components and tools.
2. Start by attaching part A to part B using the provided screws (x8).
3. Connect the remaining parts (C, D, E, etc.) as shown in the assembly diagram.
4. Tighten all screws securely to ensure stability.

#### Safety Precautions

Before using the storage chest, please keep the following safety precautions in mind:

- Do not allow children to play under open drawers to prevent accidents.
- Ensure that the storage chest is placed on a stable and level surface to avoid tipping.
- Consider using tip-over restraints (not included) to reduce the risk of tipping. Note that restraints may not completely eliminate the risk.

#### Storage Guidelines

The storage chest is designed to accommodate various items. Follow these guidelines for optimal usage:

- Avoid overloading the drawers with excessive weight.
- Distribute the weight evenly across the drawers to maintain stability.
- Store items of similar size and weight together to maximize storage space.
- Avoid storing fragile or valuable items that may be damaged if the drawers are opened forcefully.

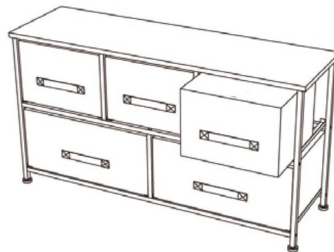
### **Cleaning and Maintenance**

To keep your storage chest in good condition, follow these cleaning and maintenance tips:

- Regularly dust the surface using a soft, dry cloth.
- Avoid using harsh chemicals or abrasive cleaners that may damage the finish.
- If any spills occur, clean them immediately to prevent stains or warping.

### **PISC03 / PISC03B**

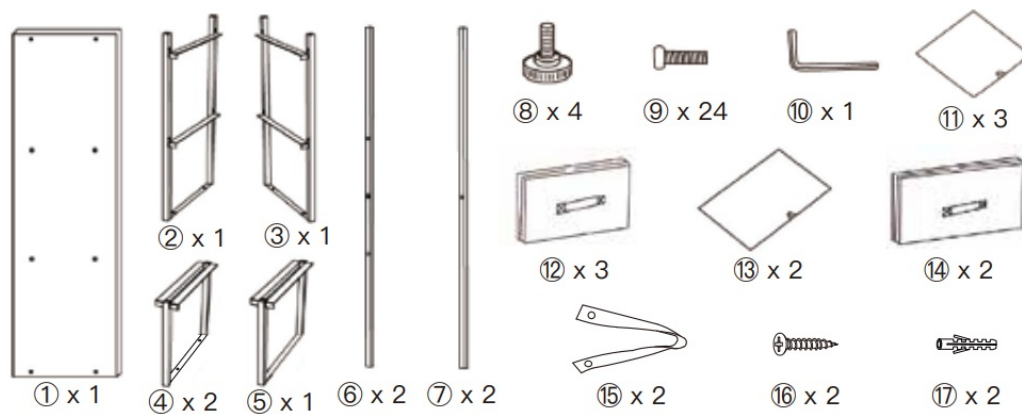
#### **Storage Chest**



### **Warning**

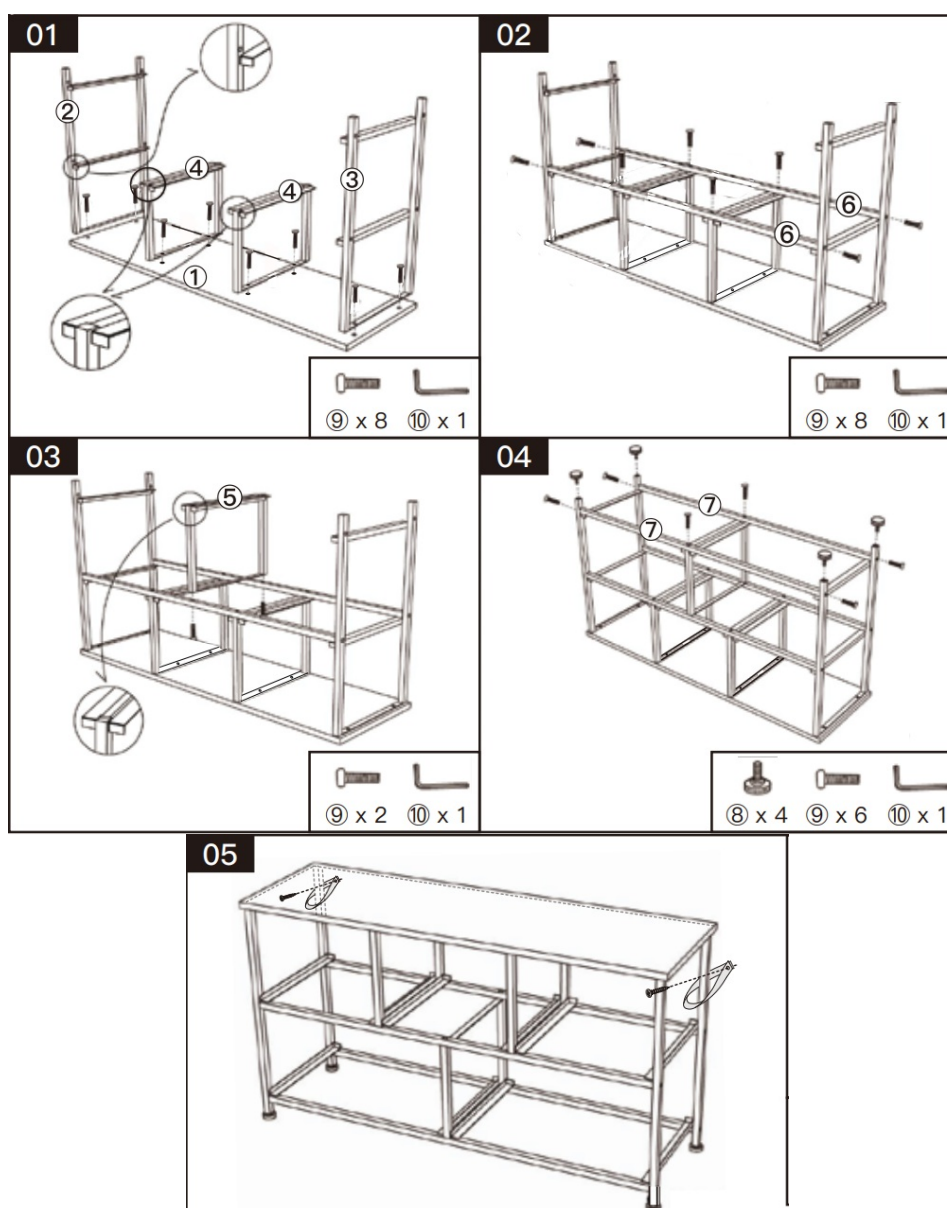
- Avoid potential personal injuries and property damage caused by furniture tip-over.
- Do not set TV or other heavy objects on the top of this product, unless it is specifically designed to accommodate.
- To avoid instability, place heaviest items on the lowest drawers, and never open more than one drawer at a time.
- Do not allow standing on top of this product.
- Never allow children to climb or hang on the product. To avoid head injury, do not allow children to play underneath open drawers.
- Due to no drawer stops, never allow children to pull out the drawer, preventing the drawer from falling off.
- In order to prevent overturning this product must be used with the wall attachment device provided. The use of tip-over restraints may only reduce, but not eliminate the risk of tip-over.

### **Contents**

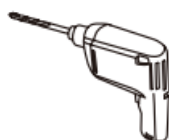


**Caution:** Do not tighten the bolts until they are all in the correct position.

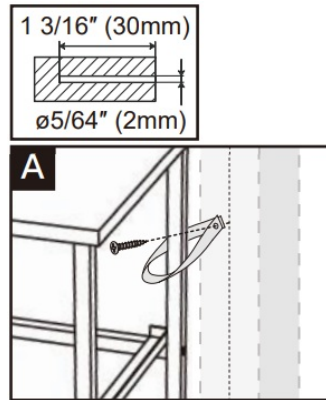
## INSTALLATION



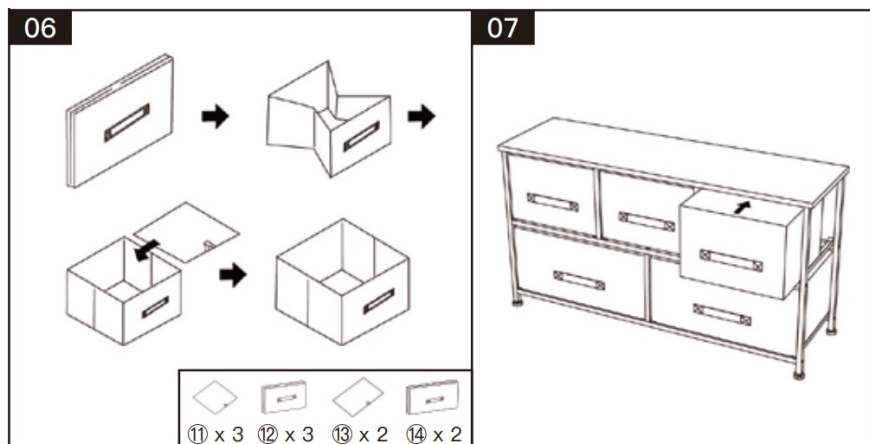
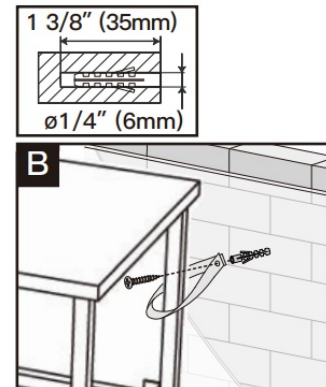
Electric Drill (NOT included)



- For Wood Stud Installation



- For Concrete or Solid Wall Installation



## FAQ'S

Can I use the storage chest without attaching it to the wall?

While it is recommended to use tip over restraints to enhance stability, the storage chest can be used without attaching it to the wall. However, this increases the risk of tipping, especially if the drawers are heavily loaded or if there is excessive movement in the surrounding area.

Can I remove the drawers for cleaning or rearranging items?


Yes, the drawers can be removed for cleaning or rearranging items. Simply pull the drawer fully open and lift it upwards to detach it from the tracks. To reattach the drawer, align it with the tracks and slide it back into place.

What should I do if the storage chest becomes unstable or wobbly?

If you notice any instability or wobbliness in the storage chest, please ensure that all screws are tightly secured. If the issue persists, discontinue use and contact our customer support for further assistance.

---

## Documents / Resources

	<p><a href="#">Pipishell PISC03B Storage Chest</a> [pdf] Instruction Manual PISC03, PISC03B, PISC03B Storage Chest, PISC03B, Storage Chest, Chest</p>
---	---

## References

-  [Pipishell Heavy Duty Full Motion TV Wall Mounts Make Your Life Better](#)
- [User Manual](#)