

Pipishell PILS01 Ladder Shelf Bookcase 4 Tier Bookshelf



# Pipishell PILS01 Ladder Shelf Bookcase 4 Tier Bookshelf Instruction Manual

[Home](#) » [Pipishell](#) » Pipishell PILS01 Ladder Shelf Bookcase 4 Tier Bookshelf Instruction Manual 

## Contents

- 1 Pipi shell PILS01 Ladder Shelf Bookcase 4 Tier Bookshelf
- 2 Product Information
- 3 Product Usage Instructions
- 4 Supplied Parts and Hardware
- 5 Tools Needed
- 6 Installation Instruction
- 7 Contact Information
- 8 Documents / Resources
  - 8.1 References



**Pipi shell PILS01 Ladder Shelf Bookcase 4 Tier Bookshelf**



## Product Information

### Specifications:

- **Model:** PILS01
- **Dimensions:**
  - Board [G]: 300 x 310mm
  - Board [F]: 300 x 280mm
  - Board [E]: 300 x 245mm
  - Board [D]: 300 x 210mm
- **Material:** Wood and Metal
- **Weight Capacity:** Up to X lbs

## Product Usage Instructions

### Step 1: Assembly of Poles and End Caps

Secure poles [B] and [C] to board [G]. Attach end caps [I] to the bottom of poles [B] and [C]. Use bolts J and the provided tools.

### Step 2: Attaching Top Frames

Secure top frames [A] to poles [B] and [C] using bolts J.

### Step 3: Attaching Boards

Secure boards [F], [E], and [D] to the assembled frame using bolts J.

### Step 4: Assembling Cross Brace

Assemble cross brace [H] using bolts K and L.

### Step 5: Securing Cross Brace

Secure cross brace [H] to the back side of the shelf using bolts K and L.

## Step 6: Wall Mounting

For wood stud installation, follow steps 6A-1 and 6A-2. For concrete, solid wall, or brick wall installation, follow steps 6B-1 and 6B-2.

### 6A For Wood Stud Installation:

1. Put the ladder shelf in position and mark holes on the stud center line.
2. Drill holes into the wood stud.
3. Tighten screw [O] against the shelf.

### 6B For Concrete, Solid Wall, or Brick Wall Installation:

1. Mark the hole for wall anchor [N] and drill a hole.
2. Secure L-shaped plate [M] to board [D].
3. Use a hammer to knock the wall anchor into the wall and tighten screw [O] against the shelf.

### Frequently Asked Questions (FAQ):

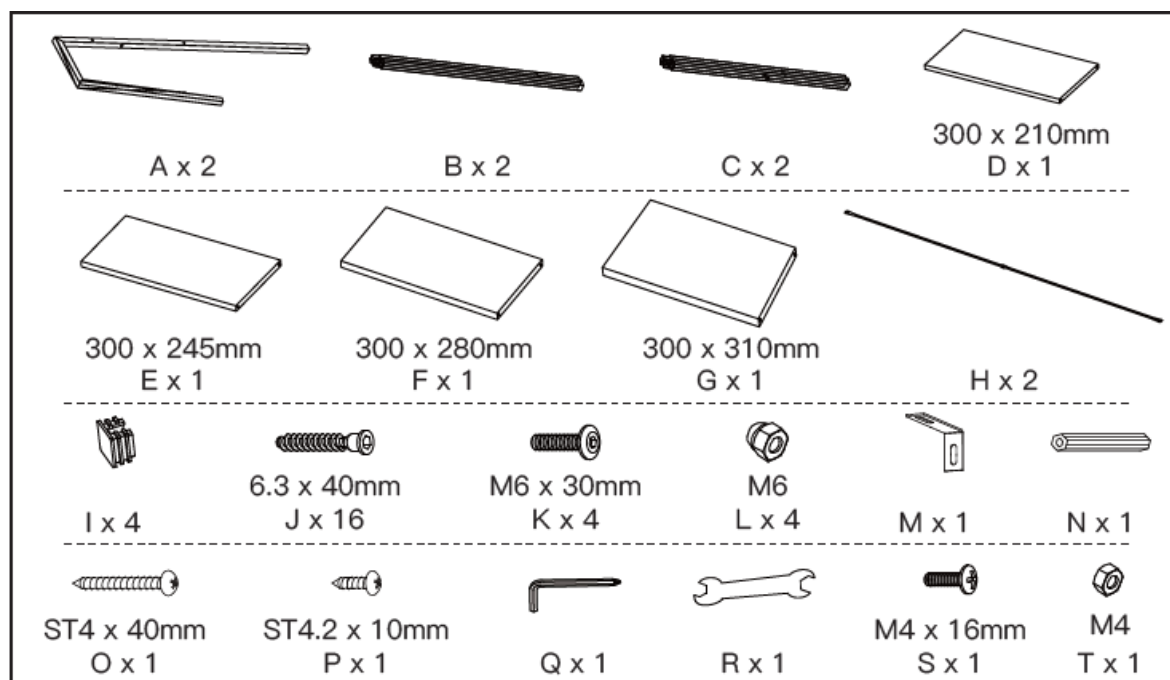
- **Q: What is the weight capacity of the ladder shelf?**

A: The ladder shelf has a weight capacity of X lbs, ensuring sturdy support for your items.

- **Q: Are additional tools required for installation?**

A: Yes, you will need an electric drill and hammer for the successful installation of the ladder shelf.

### Supplied Parts and Hardware



### Tools Needed

### Tools Needed (Not Included)



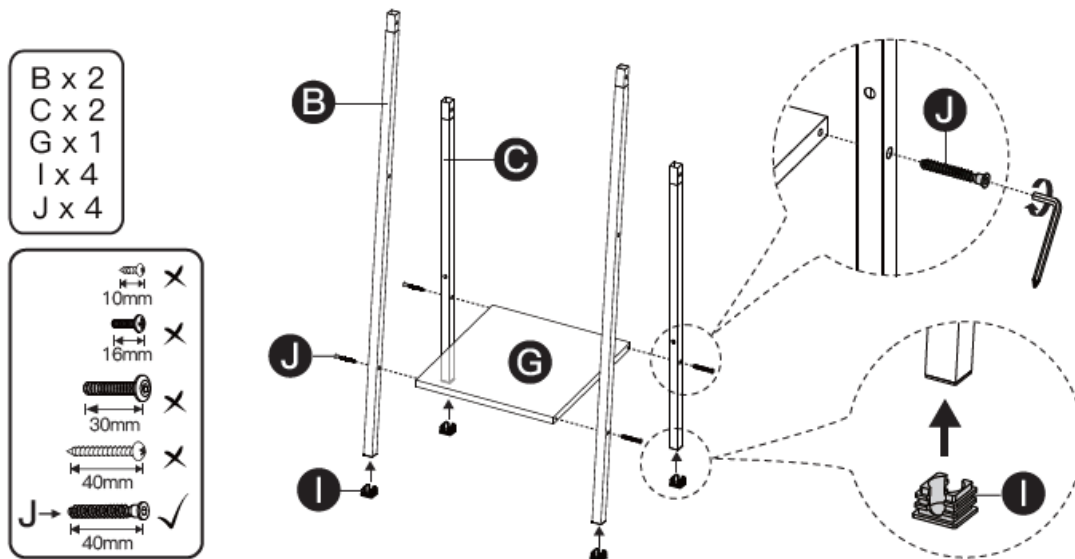
## Installation Instruction

### Installation Tip:

Align and loosely thread all bolts into the corresponding holes before fully tightening each bolt one by one.

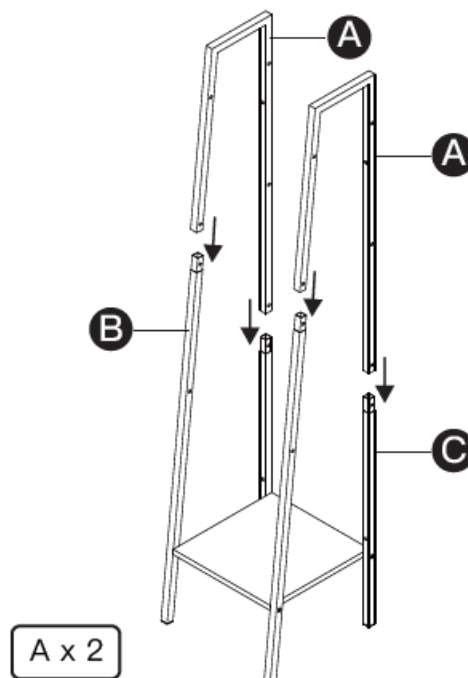
### STEP 1

Secure poles [B] and [C] to board [G]. Then attach end caps [I] to the bottom of poles [B] and [C].



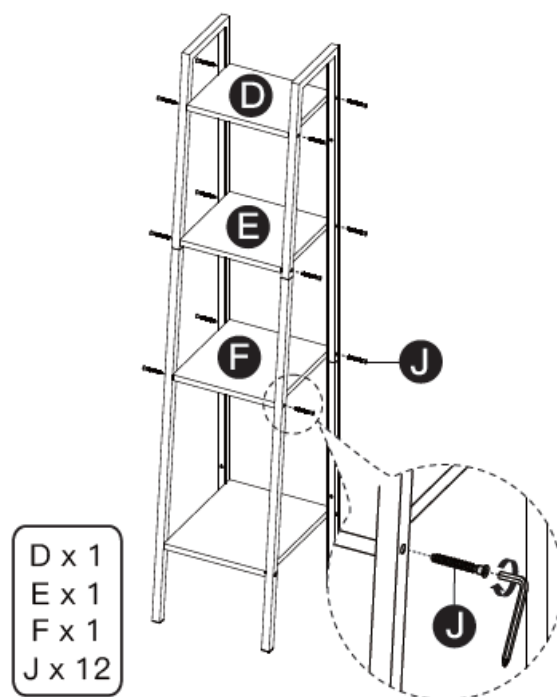
### STEP 2

Secure top frames [A] to poles [B] and [C].



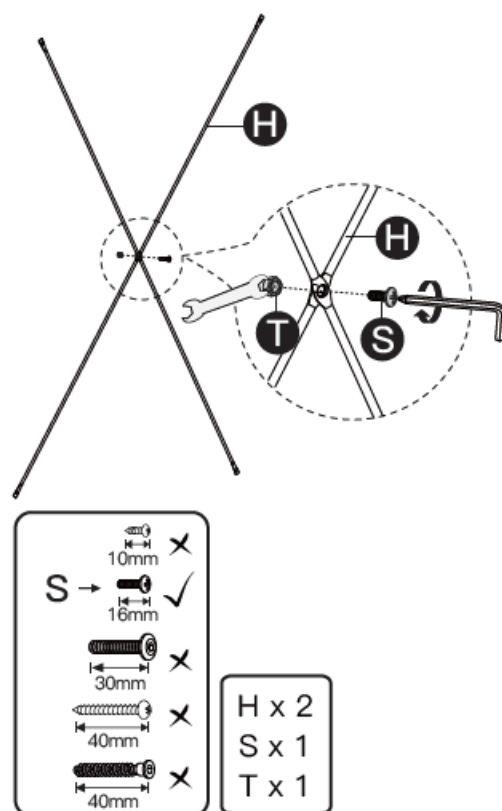
### STEP 3

Secure board [F], [E] and [D] to the assembled frame.



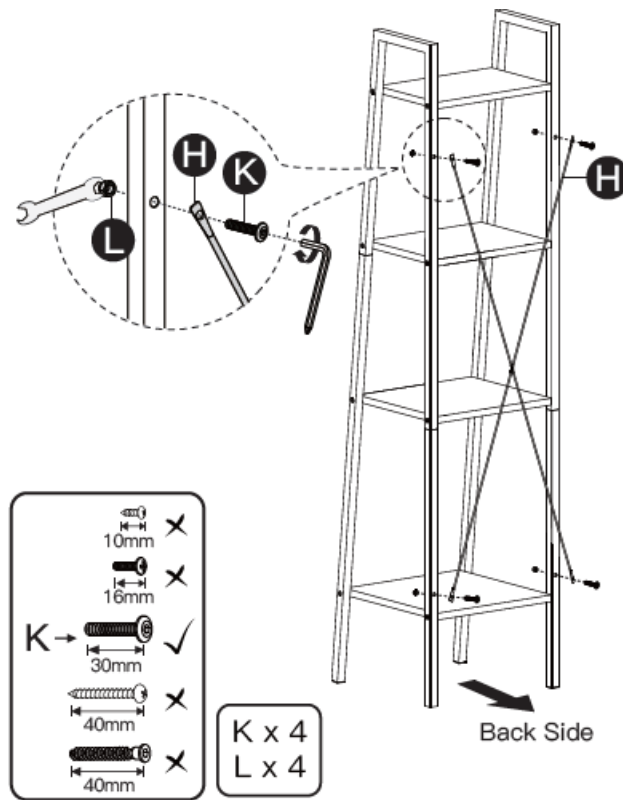
#### STEP 4

Assemble cross brace [H].



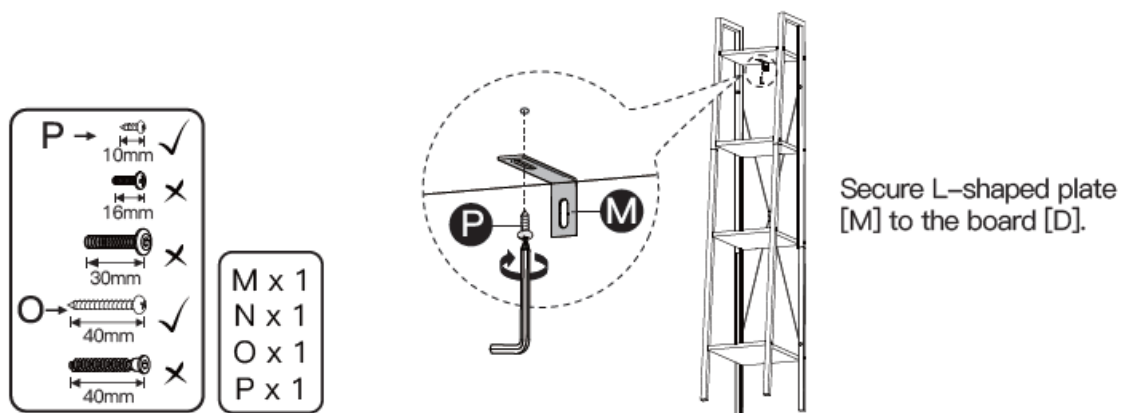
#### STEP 5

Secure cross brace [H] to the back side of the shelf.



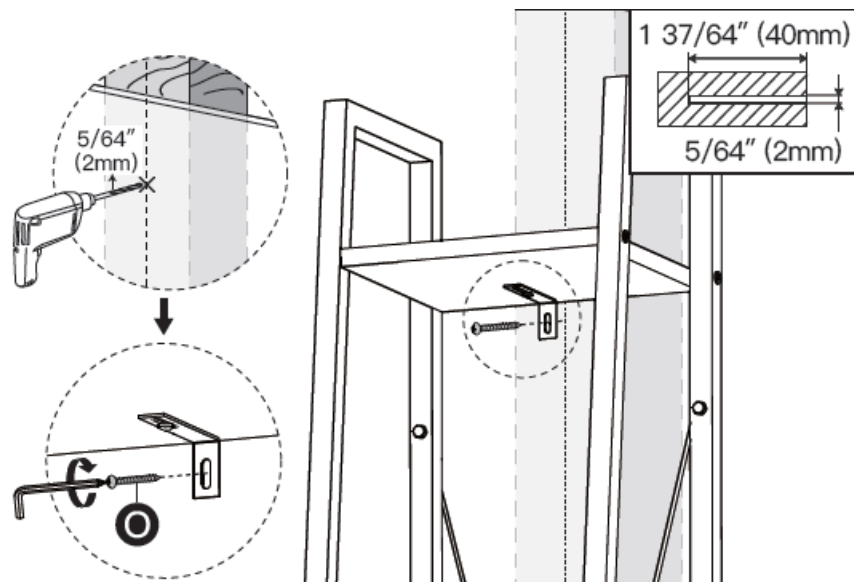
## STEP 6

Secure the shelf to the wall.



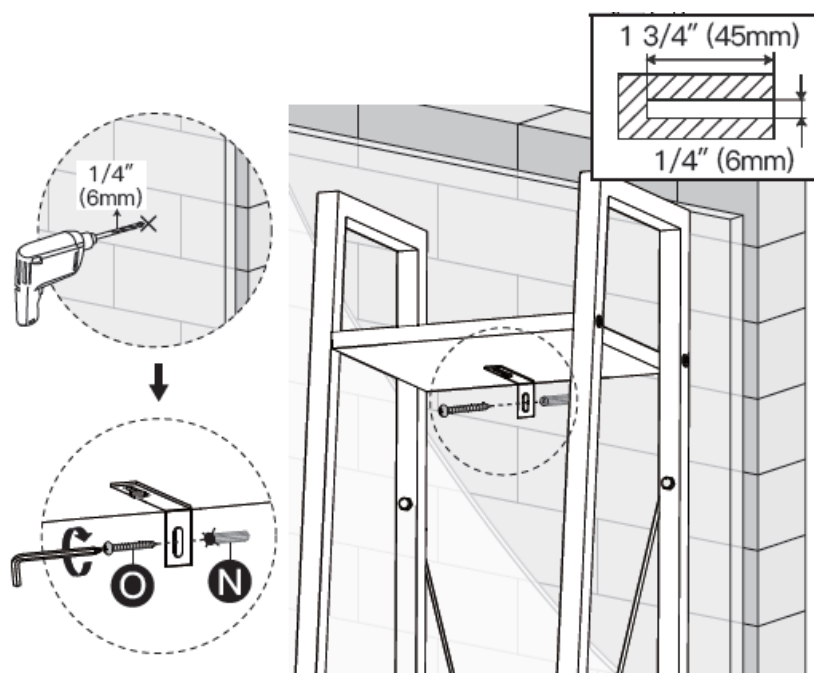
## For Wood Stud Installation

- Put the ladder shelf at your desired position and line up the hole with the stud centre line. Mark the hole, and drill a hole into the wood stud.
- Tighten the screw [O] until it is pulled firmly against the shelf.



### For Concrete, Solid Wall or Brick Wall Installation

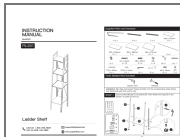
- Put the ladder shelf in your desired position. Mark the hole for the wall anchor [N], and drill a hole.
- Use a self-supplied hammer to knock the wall anchor [N] into the wall. Tighten the screw [O] until it is pulled firmly against the shelf.



### Contact Information

- (US/CA) 1-800-556-9829
- (UK) 44-808-196-3885
- [support@pipishell.net](mailto:support@pipishell.net)
- [www.pipishellav.com](http://www.pipishellav.com).

## Documents / Resources



[Pipishell PILS01 Ladder Shelf Bookcase 4 Tier Bookshelf](#) [pdf] Instruction Manual  
PILS01 Ladder Shelf Bookcase 4 Tier Bookshelf, PILS01, Ladder Shelf Bookcase 4 Tier Bookshelf, Shelf Bookcase 4 Tier Bookshelf, Bookcase 4 Tier Bookshelf, 4 Tier Bookshelf, Tier Bookshelf, Bookshelf

## References

- [User Manual](#)

[Manuals+](#), [Privacy Policy](#)

This website is an independent publication and is neither affiliated with nor endorsed by any of the trademark owners. The "Bluetooth®" word mark and logos are registered trademarks owned by Bluetooth SIG, Inc. The "Wi-Fi®" word mark and logos are registered trademarks owned by the Wi-Fi Alliance. Any use of these marks on this website does not imply any affiliation with or endorsement.