



Pioneer TS-A653CH Separate 2 Way Component Speaker System Instruction Manual

[Home](#) » [Pioneer](#) » Pioneer TS-A653CH Separate 2 Way Component Speaker System Instruction Manual 

Contents

- [1 Pioneer TS-A653CH Separate 2 Way Component Speaker System](#)
- [2 SAFETY INSTRUCTION](#)
- [3 PARTS INCLUDED](#)
- [4 FEATURES](#)
- [5 HOW TO INSTALL](#)
- [6 DIMENSIONS](#)
- [7 SPECIFICATIONS](#)
- [8 Documents / Resources](#)
- [9 Related Posts](#)

Pioneer

Pioneer TS-A653CH Separate 2 Way Component Speaker System



SAFETY INSTRUCTION

WARNING

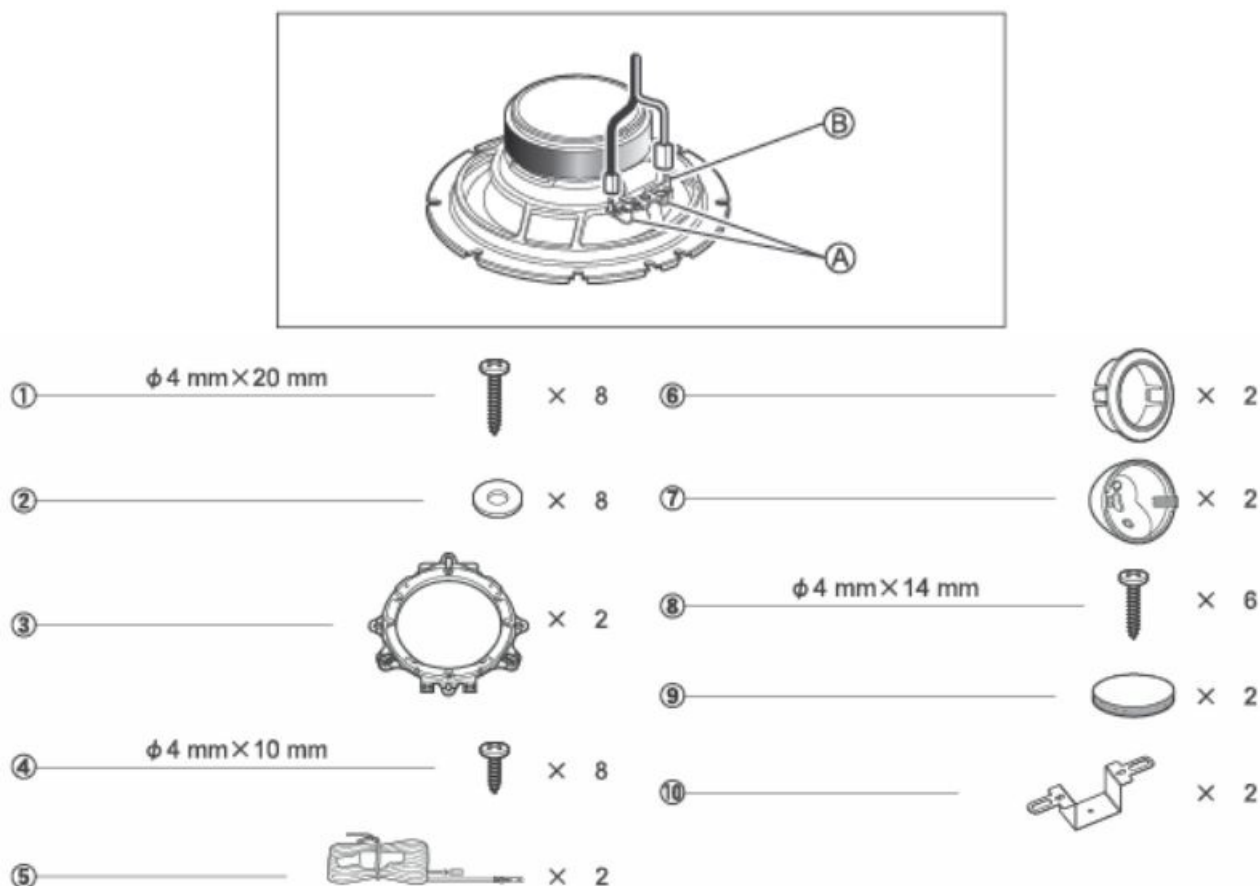
Be sure to read this instruction manual before installing this speaker.

Over time, your hearing “comfort level” adapts to higher volumes of sound, so that what sounds “normal” can actually be doing harm. To protect against hearing loss, set your equipment’s volume at a low setting, slowly increase it until you can hear it comfortably and clearly, and leave it there. Do not turn up the volume so high that you can’t hear what’s around you.

CAUTION

1. Do not touch the speaker flexible wire **A**.
2. Do not use the speaker independently. To avoid breakage, be sure to use the specified network.
3. Do not change the direction of the speaker terminal assembly **B**.
4. Make sure lead and speaker terminals do not contact metal.
5. When making connections, refer also to the instruction manual of the car stereo used.

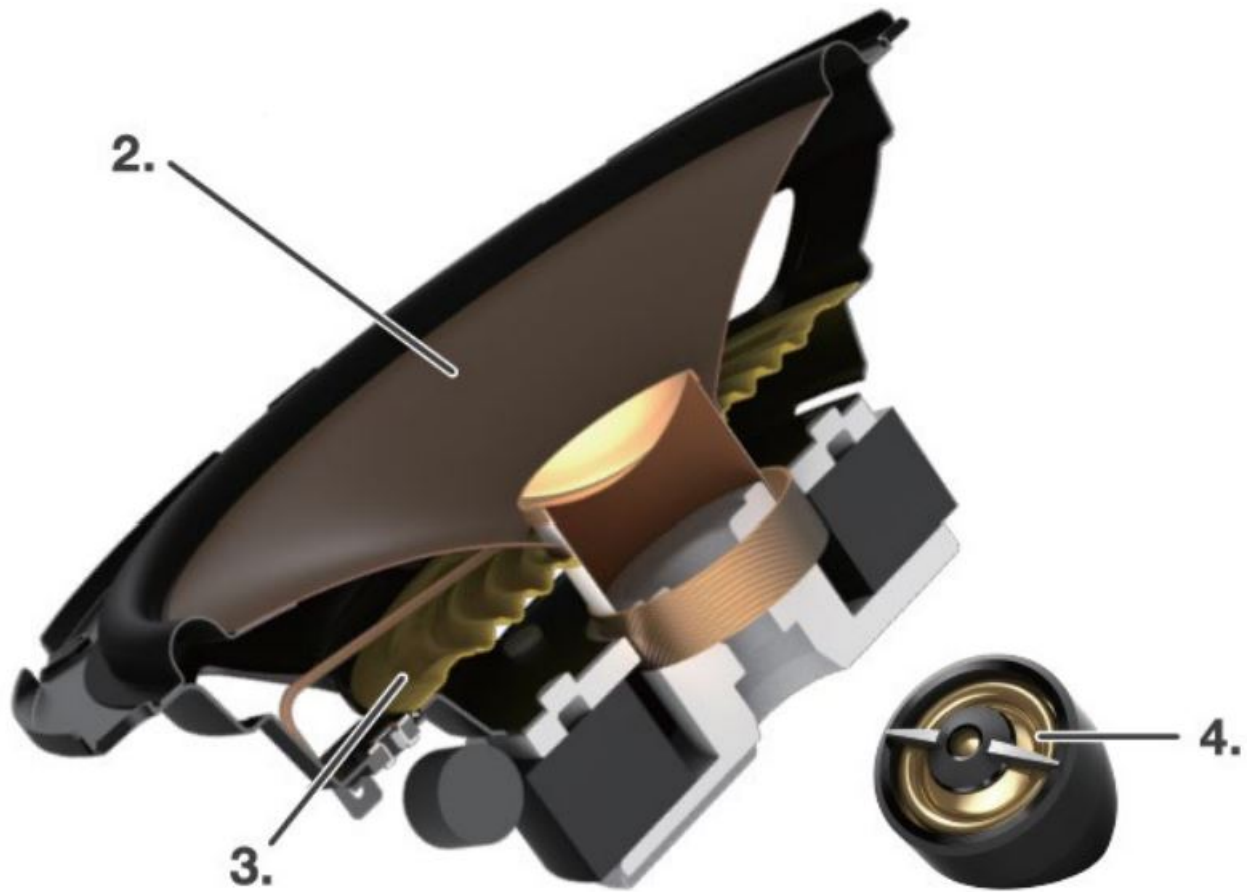
PARTS INCLUDED



A-series speakers are engineered to get loud, while maintaining smooth, low-distortion sound

- Powerful and Loud sound.
- Smooth frequency response and sound dispersion for superior off-axis listening.
- Clear mids and highs with low distortions.

FEATURES

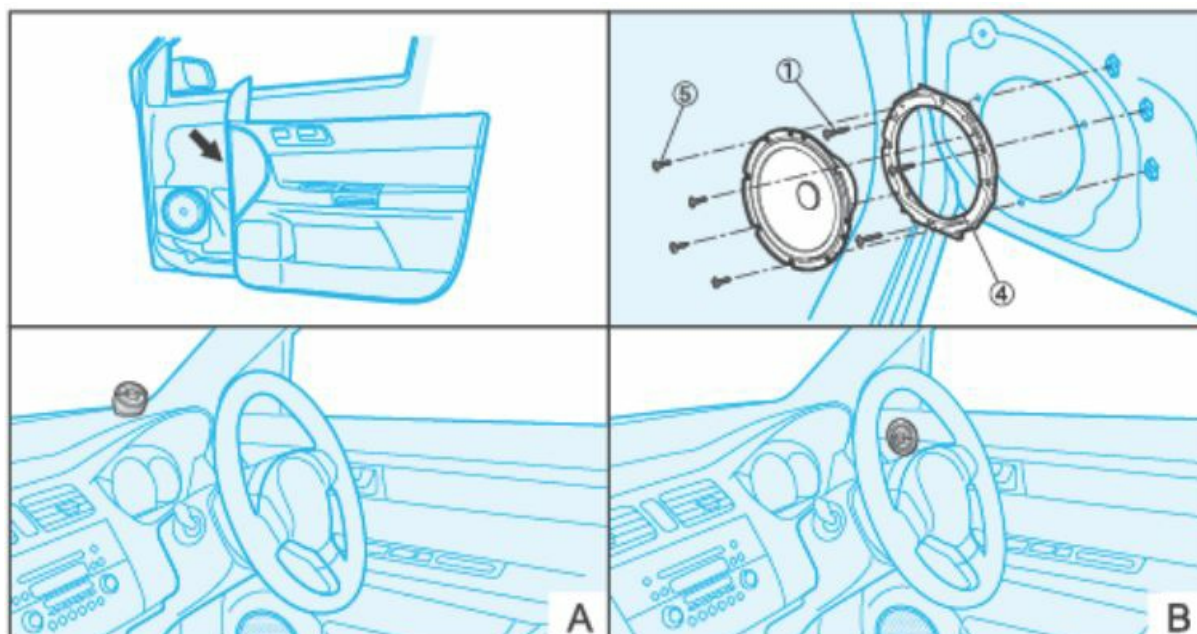


1. OPEN & SMOOTH sound concept delivers smooth frequency response and wide dispersion for superior off-axis listening.
2. Aramid fiber and Mica reinforced IMPP cone provides fast response and precise bass.
3. PFSS (Progressive Flex Suspension System) balances between deep bass and high power handling *Patent technology.
4. PolyetherImide (PEI) dome diaphragm provides clear mids and highs with low distortions.
5. Multi-Fit adapters expand Installation flexibility and Improve acoustic performances.

EXAMPLE OF COVERAGE

MAKE / FAIRE	MODEL / MODÈLE
AUDI	A3
CHEVROLET	EQUINOX / CRUZE
CITROEN	C1
FORD	FUSION / FIESTA
HONDA	CIVIC
HYUNDAI	CRETA / TUCSON
MARUTI SUZUKI	BALENO / VITARA BREZZA
NISSAN	ROGUE / QASHQAI
OPEL	ASTRA / CORSA
PEUGEOT	208 / 308
RENAULT	CAPTUR / CLIO
SEAT	LEON
ŠKODA	OCTAVIA
TOYOTA	RAV4 / 4RUNNER
VOLKSWAGEN	GOLF MK7 / TIGUAN

HOW TO INSTALL

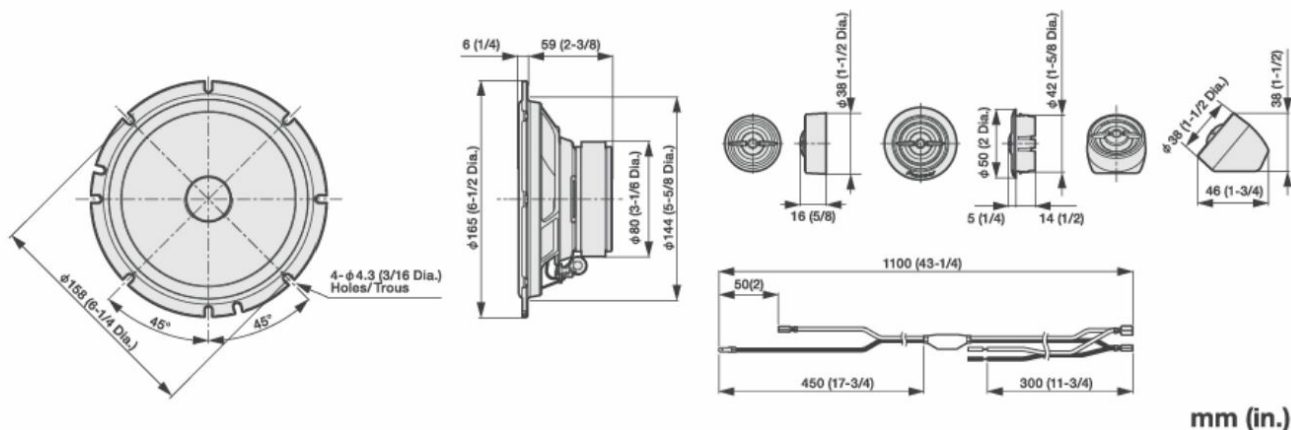


INSTALLATION FIT GUIDE



For Information about specific vehicles applications: http://www.pioneer-carglobal.com/speskerfitting-Aseries1_dr1

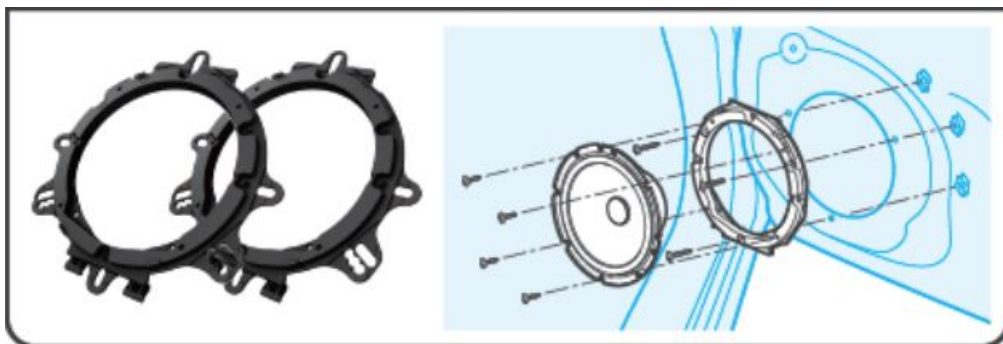
DIMENSIONS



Car Sound Simulator Application for more in-car sound experience.



Multi-Fit Adapters Included

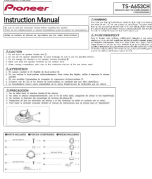


SPECIFICATIONS

- **Reproduction system** Separate two way
- **Speaker specifications**
 - **Woofer** $\phi 165$ mm (6-1/2" dia.)
 - **Tweeter** $\phi 20$ mm (13/16" dia.)
- **Continuous power handling (RMS)** 85 W
- **Maximum music power** 370 W
- **Sensitivity:**
 - 91 dB (1 W/1 m)
 - 97 dB (1 W/0.5 m)
- **Frequency response** 33 Hz to 58 kHz (-20 dB)
- **Nominal impedance** 4 Ω
- **Cutout diameter** $\phi 144$ mm (5-5/8" dia.)

Do not ship your unit in for repair without contacting Pioneer first. Units sent without a return authorization number will be refused.

Documents / Resources

	<p>Pioneer TS-A653CH Separate 2 Way Component Speaker System [pdf] Instruction Manual TS-A653CH, TS-A653CH Separate 2 Way Component Speaker System, Separate 2 Way Component Speaker System, 2 Way Component Speaker System, Speaker System</p>
---	---