




## Pioneer TS-A1601C Separate 2 Way Component Speakers Instruction Manual

[Home](#) » [Pioneer](#) » Pioneer TS-A1601C Separate 2 Way Component Speakers Instruction Manual 

### Pioneer TS-A1601C Separate 2 Way Component Speakers Instruction Manual

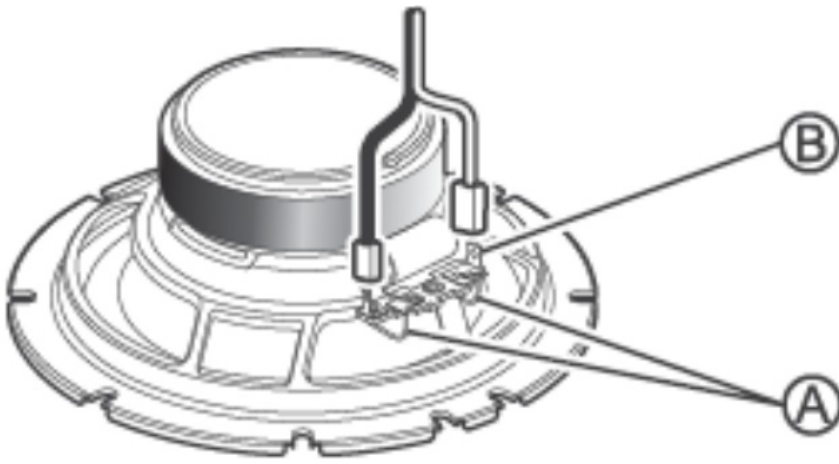


Be sure to read this instruction manual before installing this speaker.



#### CAUTION

1. Do not touch, the speaker flexible wire **A**.
2. Do not use the speaker independently. To avoid breakage, be sure to use the specified network.
3. Do not change the direction of the speaker terminal assembly **B**.
4. Make sure lead and speaker terminals do not contact metal.
5. When making connections, refer also to the instruction manual of the car stereo used.



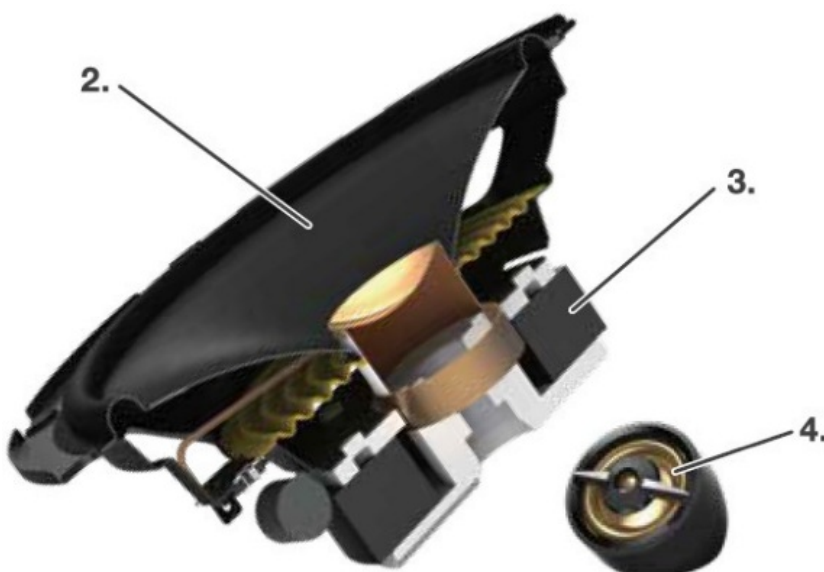
**A-series speakers engineered to get loud, while maintaining smooth, low distortion sound.**

- Powerful and Loud sound
- Smooth frequency response and sound dispersion for superior off-axis listening
- Clear mids and highs with low distortions

#### Contents

- [1 FEATURES](#)
- [2 HOW TO INSTALL](#)
- [3 DIMENSIONS](#)
- [4 PARTS INCLUDED](#)
- [5 Multi-Fit Adapters Included](#)
- [6 EXAMPLE OF COVERAGE](#)
- [7 SPECIFICATIONS](#)
- [8 Documents / Resources](#)
- [9 Related Posts](#)

## FEATURES

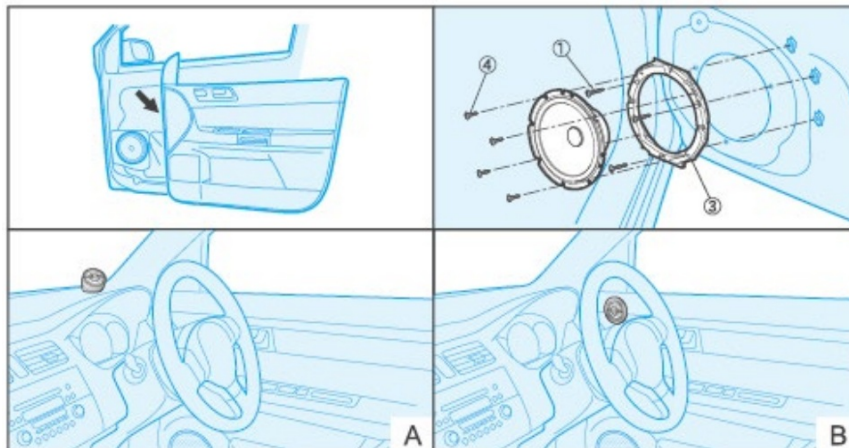


1. **OPEN & SMOOTH** sound concept delivers smooth frequency response and wide dispersion for superior off-

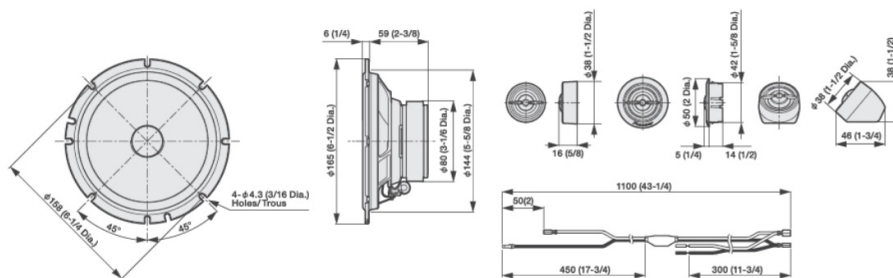
axis listening

2. Carbon and Mica reinforced IMPP cone provides fast response and precise bass
3. Optimized symmetrical motor design with a large magnet reproduces powerful and loud sound
4. Polyacrylamide (PEI) dome diaphragm provides clear mids and highs with low distortions
5. Multi-Fit adapters expand installation flexibility and improve acoustic performances

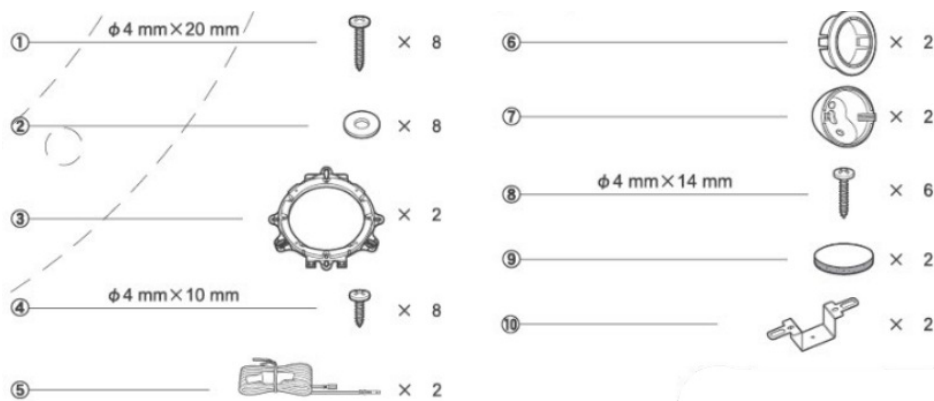
## HOW TO INSTALL



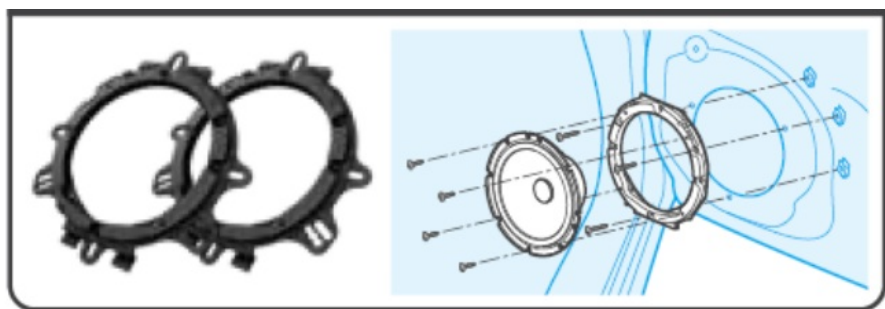
## DIMENSIONS



## PARTS INCLUDED



## Multi-Fit Adapters Included



## EXAMPLE OF COVERAGE

MAKE	MODEL
AUDI	A3
CHEVROLET	EQUINOX/CRUZE
CITROEN	C1
FORD	FUSION/FIESTA
HONDA	CIVIC
HYUNDAI	CRETA/TUCSON
MARUTI SUZUKI	BALENO/VITARA BREZZA
NISSAN	ROGUE/QASHQAI
OPEL	ASTRA/CORSA
PEUGEOT	208/308
RENAULT	CAPTUR/CLIO
SEAT	LEON
ŠKODA	OCTAVIA
TOYOTA	RAV4/4RUNNER
VOLKSWAGEN	GOLF MK7/TIGUAN

**Car Sound Simulator Application for more in-car sound experience.**



**(For information about specific vehicles applications/Pour plus.**



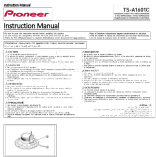
## SPECIFICATIONS

- **Reproduction system:** Separate two way
- **Speaker specifications**
  - **Woofers:** 165 mm (6-1/2" dia.)
  - **Tweeters:** 20 mm (13/16" dia.)
- **Continuous power handling (RMS):** 80 W
- **Maximum music power:** 350 W
- **Sensitivity:** 90 dB (1 W/1 m)
- **Frequency response:** 33 Hz to 58 kHz (-20 dB)
- **Nominal impedance:** 40
- **Cutout diameter:** 144 mm (5-5/8" dia.)

Do not ship your unit in for repair without contacting Pioneer first. Units sent without a return authorization number will be refused.

**Pioneer**

## Documents / Resources

	<p><a href="#">Pioneer TS-A1601C Separate 2 Way Component Speakers</a> [pdf] Instruction Manual TS-A1601C, TS-A1601C Separate 2 Way Component Speakers, Separate 2 Way Component Speakers, 2 Way Component Speakers, Component Speakers, Speakers</p>
-------------------------------------------------------------------------------------	-----------------------------------------------------------------------------------------------------------------------------------------------------------------------------------------------------------------------------------------------------------