



## PINEWORLD E202PRO WiFi and Bluetooth Smart Lock App User Manual

[Home](#) » [PINEWORLD](#) » PINEWORLD E202PRO WiFi and Bluetooth Smart Lock App User Manual 

# PINEWORLD

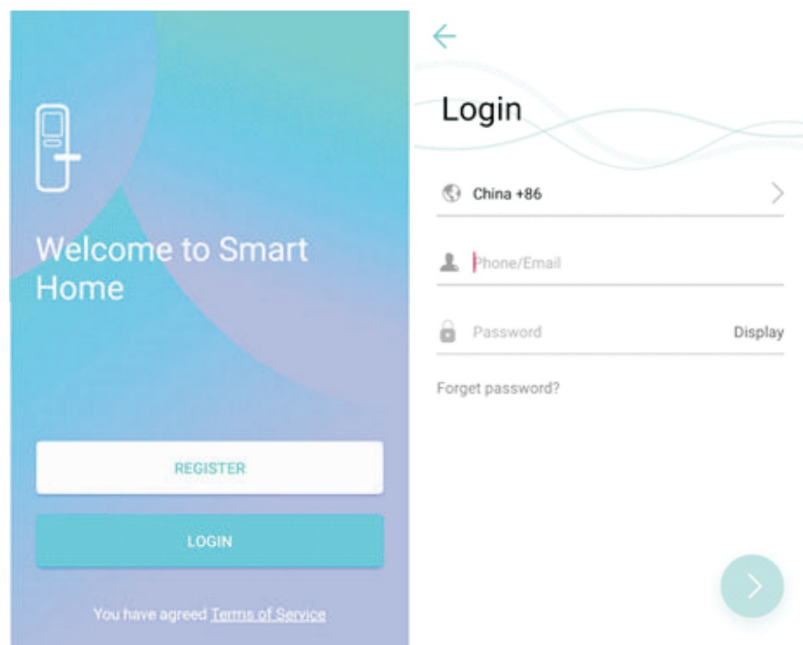
APP User Manual  
For Smart Lock  
V1 .0



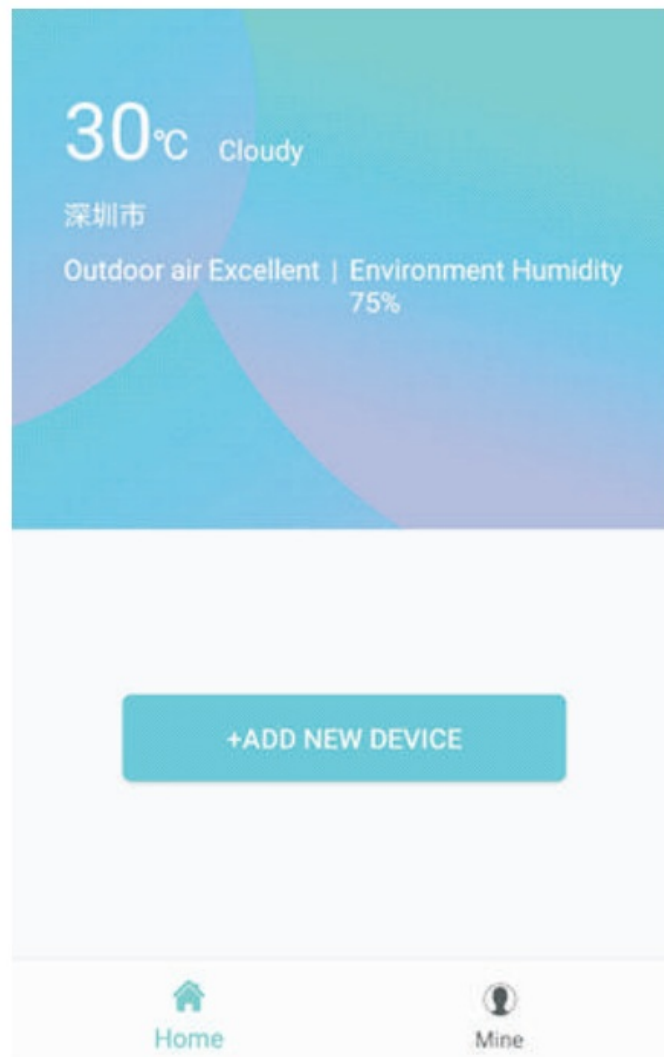
<http://www.fcsmartlock.com:8060/app.html?dm=WF1-WIFI-QINGKE&mac=B0F8936E4356>

1. Download/ Register/ Login

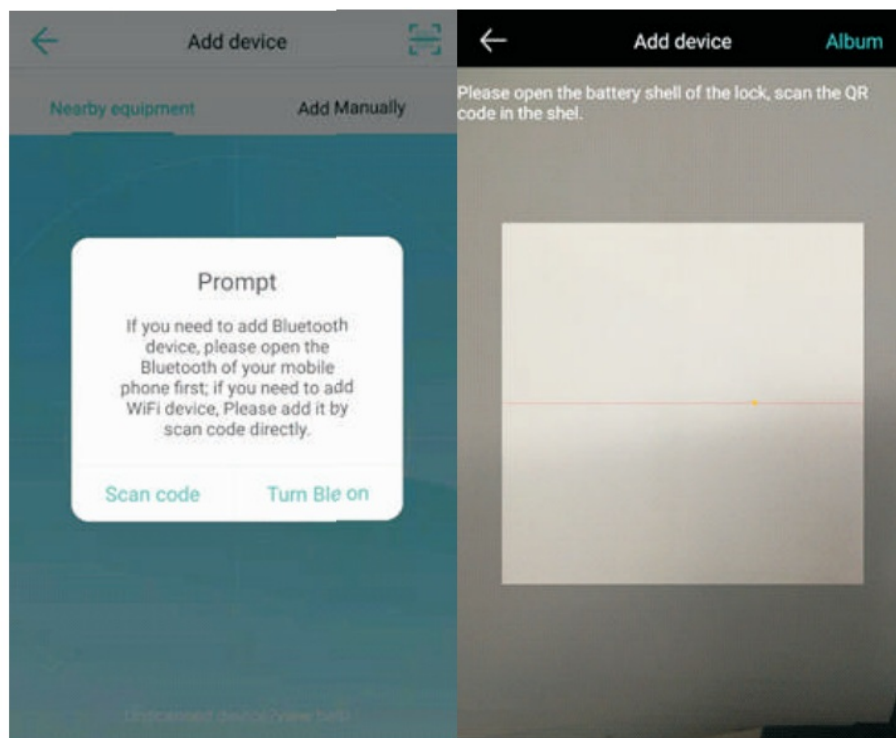
Download the APP, search for FC SmartHome” in any APP store, or scan the QR code to 30c of the path.



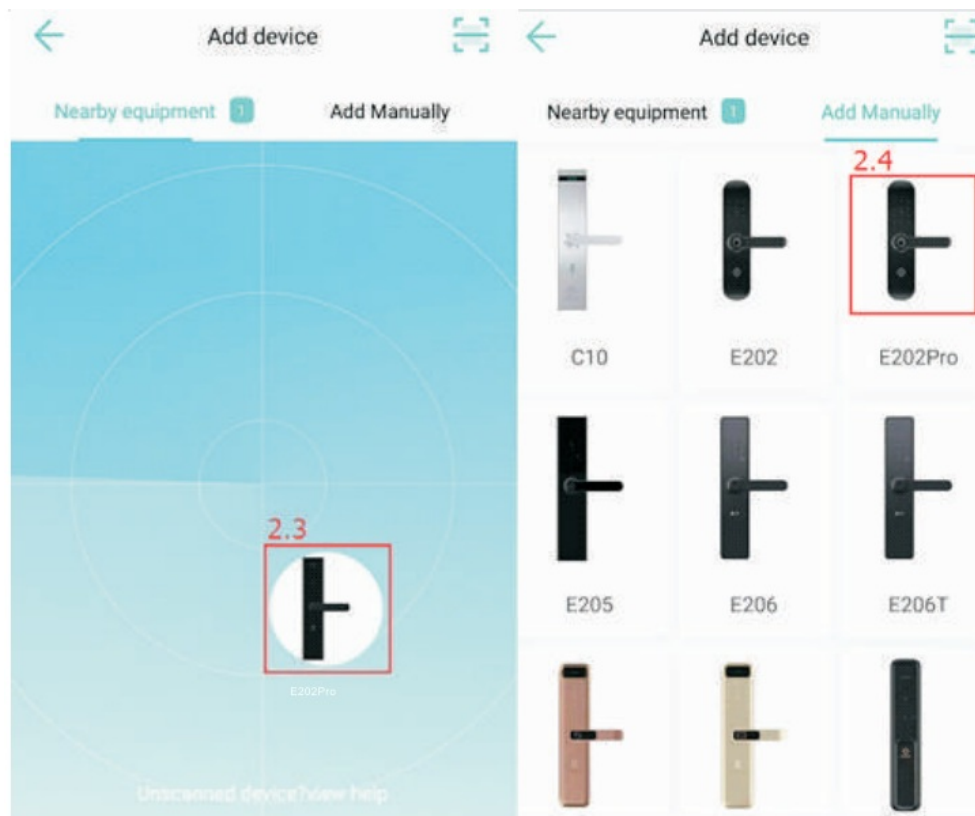
1. Once it is downloaded successfully, register through mobile phone and set password, then log in.
2. Add Device



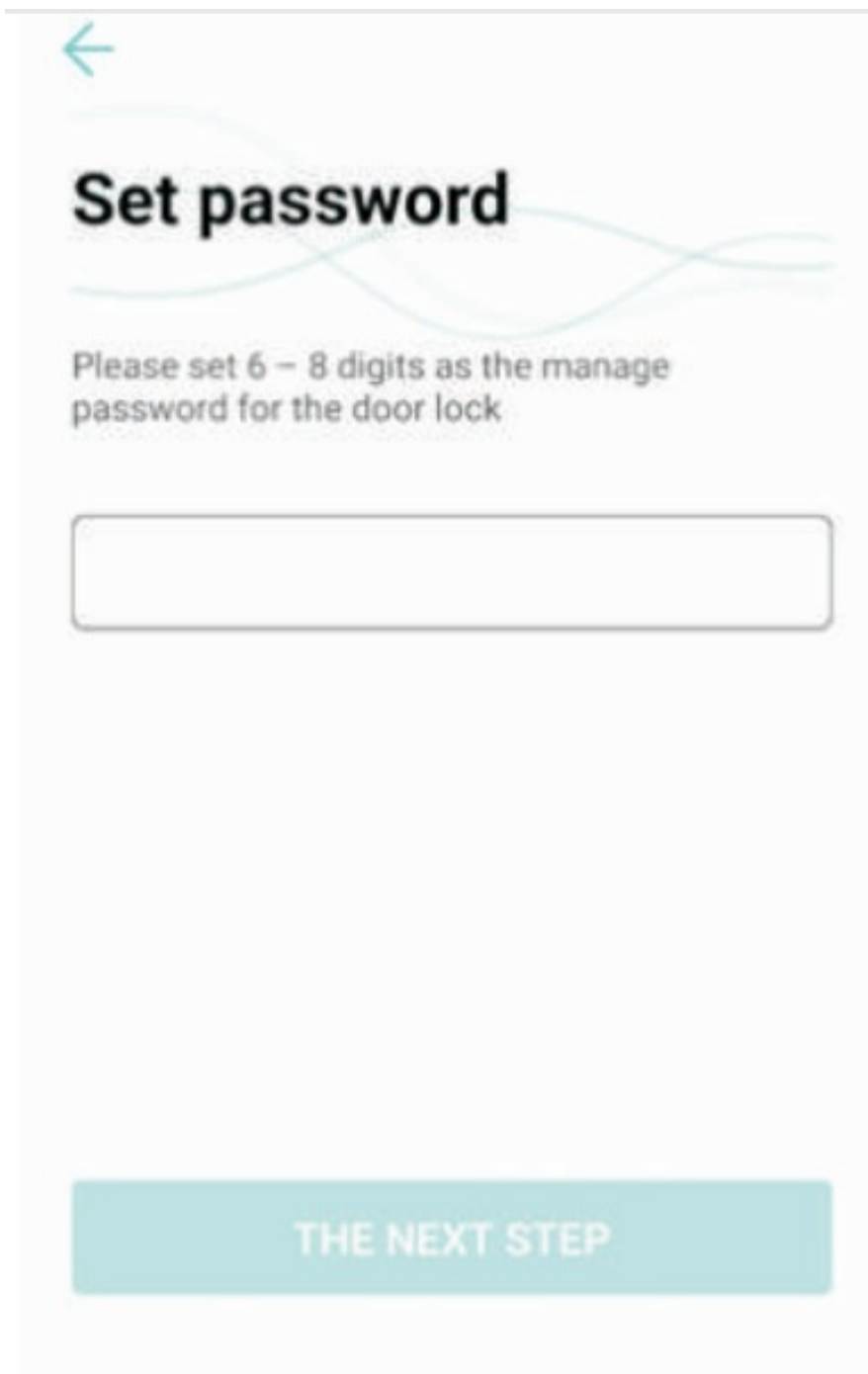
2. Click "Add Device" on the APP home page, where the devices can be selected and added as necessary.
2. Add Device



- 2.1 Scan the QR code of the lock back panel to get the path.
2. Add Device

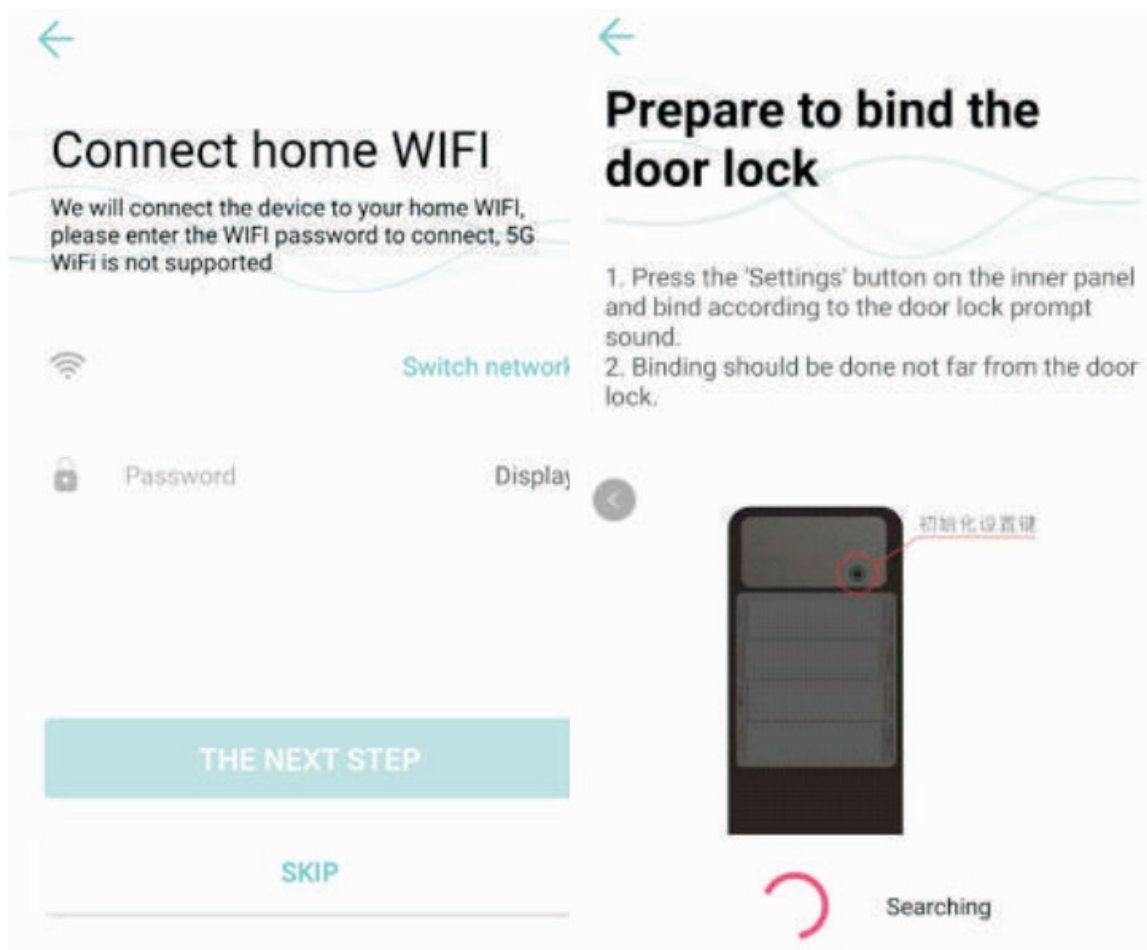


2. Add Device



The screenshot shows a mobile application interface for setting a password. At the top left, there is a teal back arrow. The title 'Set password' is displayed in a large, bold, black font. Below the title, a teal wavy line graphic separates it from the instructions. The instructions, in a smaller black font, read: 'Please set 6 – 8 digits as the manage password for the door lock'. Below this text is a large, empty rectangular input field with a thin grey border. At the bottom of the screen, there is a teal button with the text 'THE NEXT STEP' in white, uppercase letters.

2.5 Set Password A password administrator needs to be set on a lock pad in advance for verification use when adding a device.



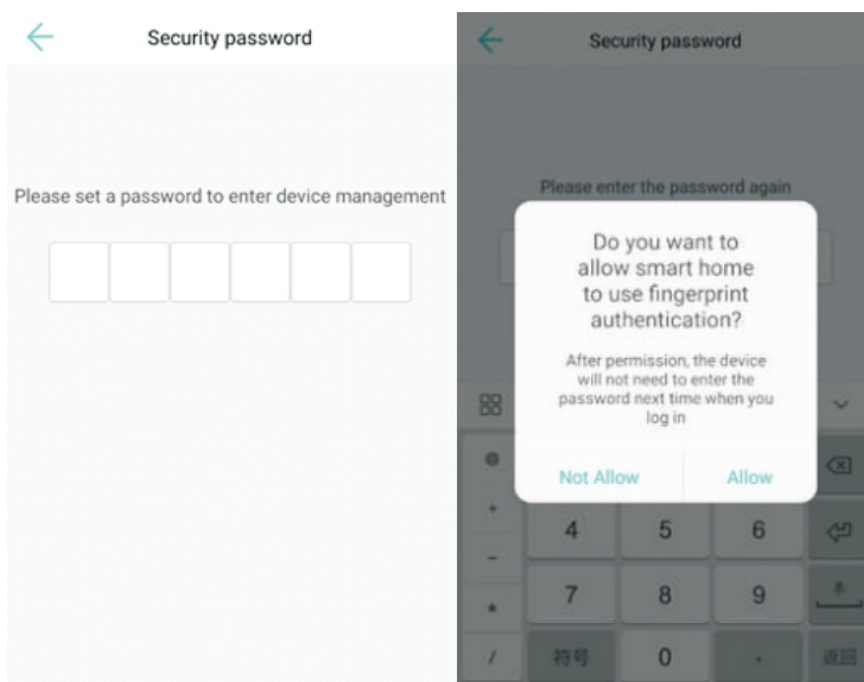
## 2.6 Connecting

2.6.1 Short press the "Setting" button on the inner panel, the lock will prompt "Please connect the WiFi by the phone"

2.6.2 When the number 8" starts to flicker, click the button on the phone to make the configuration.

**Note: Please make sure your WiFi channel is 2.4G.**

## 3. Device Security Setting

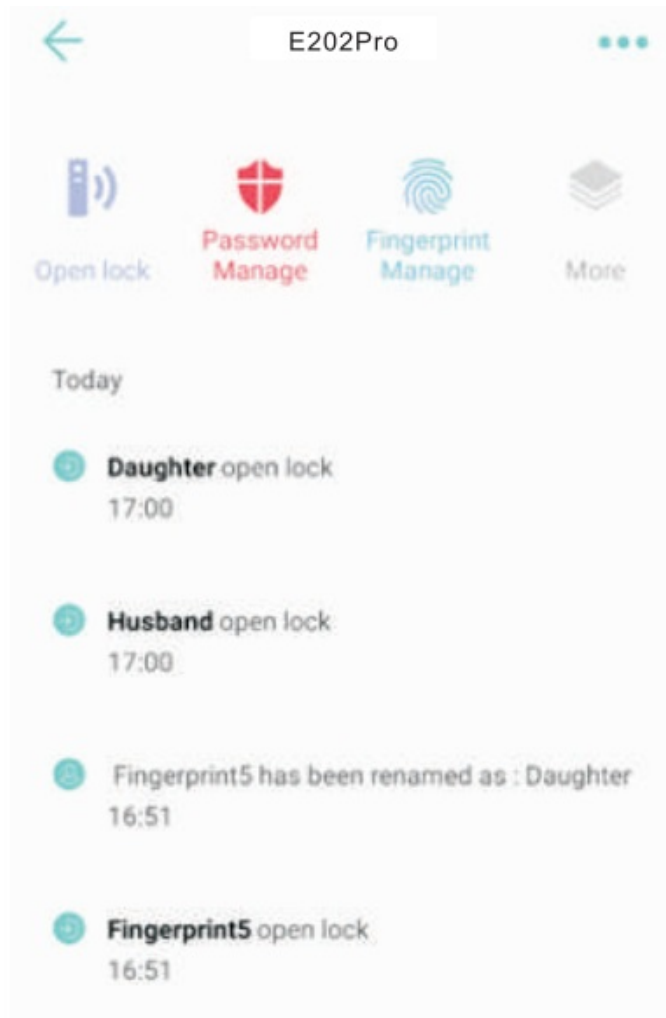


## 3. Enter Device Management Verification

3.1A password needs to be set on the phone in advance for verification when entering device management.

3.2Allow The Fingerprint Authentication: the device will not need to enter the password next time when you log in.

## 4. Homepage Related Functions



### 4.1 Related Functions

4.1.1 Open lock: Turn on the phone Bluetooth to unlock.

4.1.2 Password Manage:

Set your password name and time.

4.1.3 Fingerprint Manage:

Set your fingerprint name and delete.

4.1.4 More: Card management, Remote unlock.

4.1.5 Records: The homepage can view door lock records.



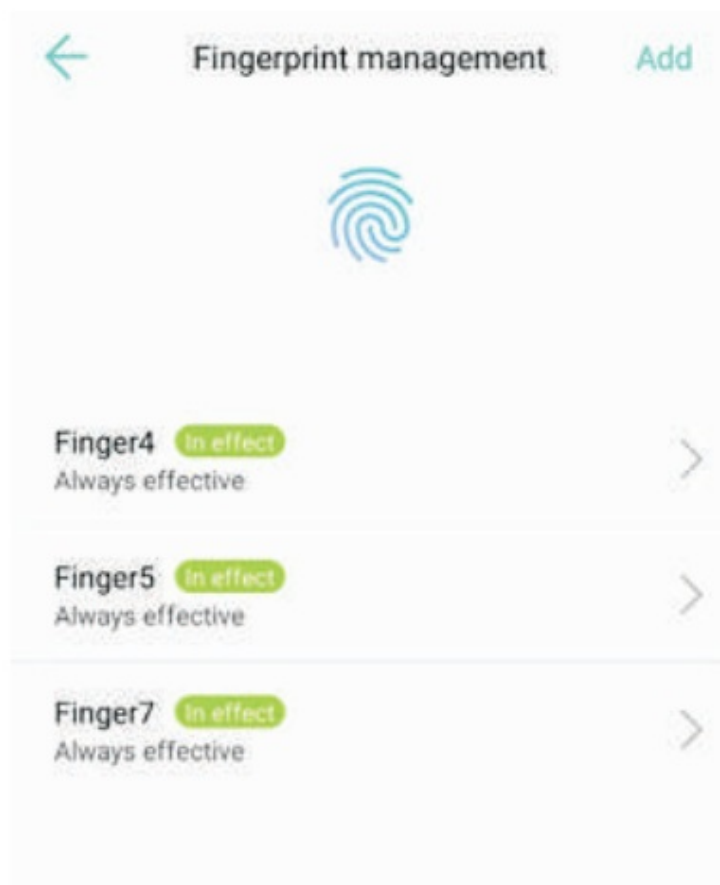
#### 4.2 Password Management

4.2.1 Press 'Add', select one-time password, timeliness password, or permanent password.

4.2.2 Set your password, name of the user, effect time, failure time and using times, etc.

4.2.3 Enter the password ended with “#” to unlock.

#### 4. Homepage Related Functions

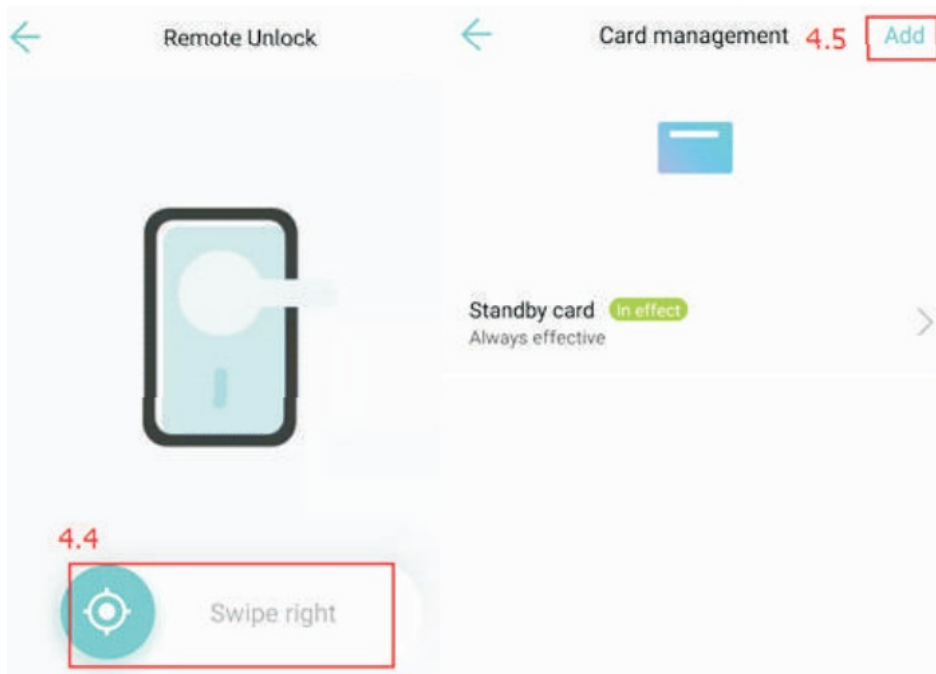


#### 4.3 Fingerprint Management

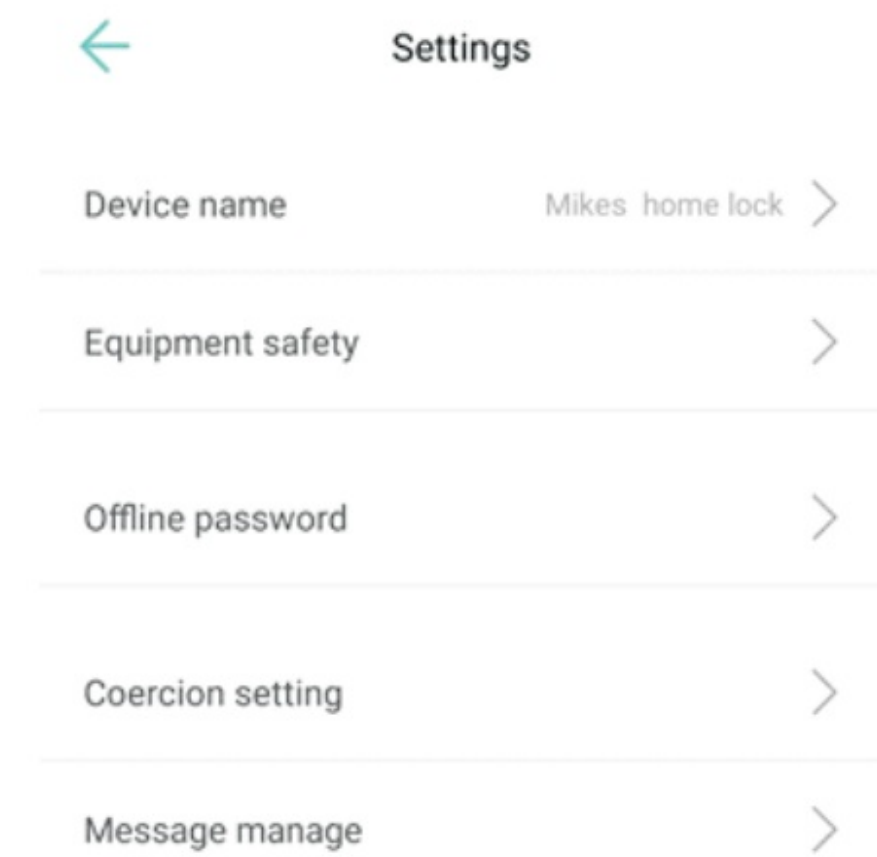
4.3.1 Please complete the fingerprint registration according to the voice prompt.

4.3.2 Adding succeed, you can change the name.

#### 4. Homepage Related Functions



5. Device Setting



5. Device Setting



Configure WiFi



Device volume



Update firmware



Device detail



Restore factory settings



Delete lock device

THE END  
THANK YOU

## Contents

[1 Documents /  
Resources](#)

[2 Related Posts](#)

## Documents / Resources



[PINeworld E202PRO WiFi and Bluetooth Smart Lock App](#) [pdf] User Manual  
E202PRO, WiFi and Bluetooth Smart Lock, E202PRO WiFi and Bluetooth Smart Lock, Bluetooth Smart Lock, Smart Lock, E202PRO WiFi and Bluetooth Smart Lock App, Lock, Smart Lock App