



Pin-tura PNM101LEW3 Display Unit Owner's Manual

[Home](#) » [Pin tura](#) » Pin-tura PNM101LEW3 Display Unit Owner's Manual 

Contents

- [1 Pin-tura PNM101LEW3 Display Unit](#)
- [2 Product Information](#)
- [3 Product Usage Instructions](#)
- [4 Frequently Asked Questions](#)
- [5 Product Overview](#)
- [6 Product Features](#)
- [7 Screen Specifications](#)
- [8 Accessories](#)
- [9 Product Appearance](#)
- [10 FCC](#)
- [11 Documents / Resources](#)
 - [11.1 References](#)
- [12 Related Posts](#)



Pin-tura PNM101LEW3 Display Unit



Product Information

Screen Specifications

- **Size:** 10.1 inches
- **Display Size:** 217.44 x 135.9mm
- **Frame size:** 238.44 x 156.9 x 12mm
- **Brightness:** 250cd/
- **Resolution:** 1920×1200
- **Viewing Angle:** TBD
- **Power Consumption:** TBD
- **Power Supply:** Wireless
- **Wireless Connection:** Yes
- **Operating System:** TBD
- **Flash Memory:** TBD
- **BT/RESET:** Included
- **Number of Playable Files:** TBD
- **Storage Temperature Range:** TBD
- **Operating Temperature Range:** TBD
- **Weight:** TBD

Wireless Charging Board Specifications

- **Size:** 114.79 x 15.46mm
- **Current and Voltage:** 12V~21V/1.5Amax
- **Power Consumption:** 70%
- **Power Input:** TBD
- **Power Output:** TBD
- **Cascade Connection:** Yes, up to 16 cascades
- **Wireless Power Supply:** Yes
- **Power Efficiency:** TBD
- **Weight:** 0.12kg

- **Magnetic Attraction Force Size:** about 2.5KG

Product Usage Instructions

Setting up the PNM101LEW3 Display System

1. Unbox the product carefully.
2. Place the display system on a flat surface.
3. Connect the wireless charging board to a power source.
4. Power on the display system and follow the on-screen instructions for setup.

Using the Pintura Digital Photo Frame

1. To display photos, transfer them to the frame's internal memory or insert a compatible storage device.
2. Select the photos you want to display using the on-screen menu.
3. Adjust settings such as slideshow duration, transition effects, and brightness to customize your viewing experience.

Frequently Asked Questions

Q: Can I charge my phone wirelessly on the PNM101LEW3?

A: Yes, the wireless charging board can power not only the screen but also compatible phones.

Q: How many cascades can the PNM101LEW3 support?

A: The PNM101LEW3 can support a maximum of 16 cascades, allowing for large event scenarios.

Q: What is the size of the magnetic attraction force?

A: The magnetic attraction force size is about 2.5 kg.

Product Overview

Pintura, an innovative display system with perfect integration of design and function, not only redefines the concept of digital photo frames but also brings an unprecedented application experience in the field of photography and photography. Its stylish and sophisticated look is integrated into every corner of life, whether it is family photos, travel memories, or professional works of art, Pintura can be perfectly displayed, making memories accessible.



Product Features

- **Innovative Design** The magnetic wireless power supply provides stable and reliable power support for the screen, and enables the screen to rotate flexibly, increasing the diversity and convenience of application scenarios.
- **Exquisite Design** With magnetic fixation and positioning functions, a flexible wireless power supply, not only can do pendulum, by supporting a maximum of 16 cascades, to meet the needs of large event scenarios.
- **Transverse Compatible** The wireless charging board can power not only the screen but also the phone.

Screen Specifications

Size	10.1"
Display Size	217.44x135.9mm
Frame size (L*W*T)	238.44*156.9*12mm
Brightness	250cd/m ²
Resolution	1920x1200
Viewing Angle	180°
Power Consumption	5W
Power Supply	12V/1A
Wireless Connection	WIFI5+BT4.2
Operating System	Linux
Flash Memory	4Gb
BT/RESET	1
Number of Playable Files	50
Storage Temperature Range	-20~60°C
Operating Temperature Range	0~50°C
Weight	350g

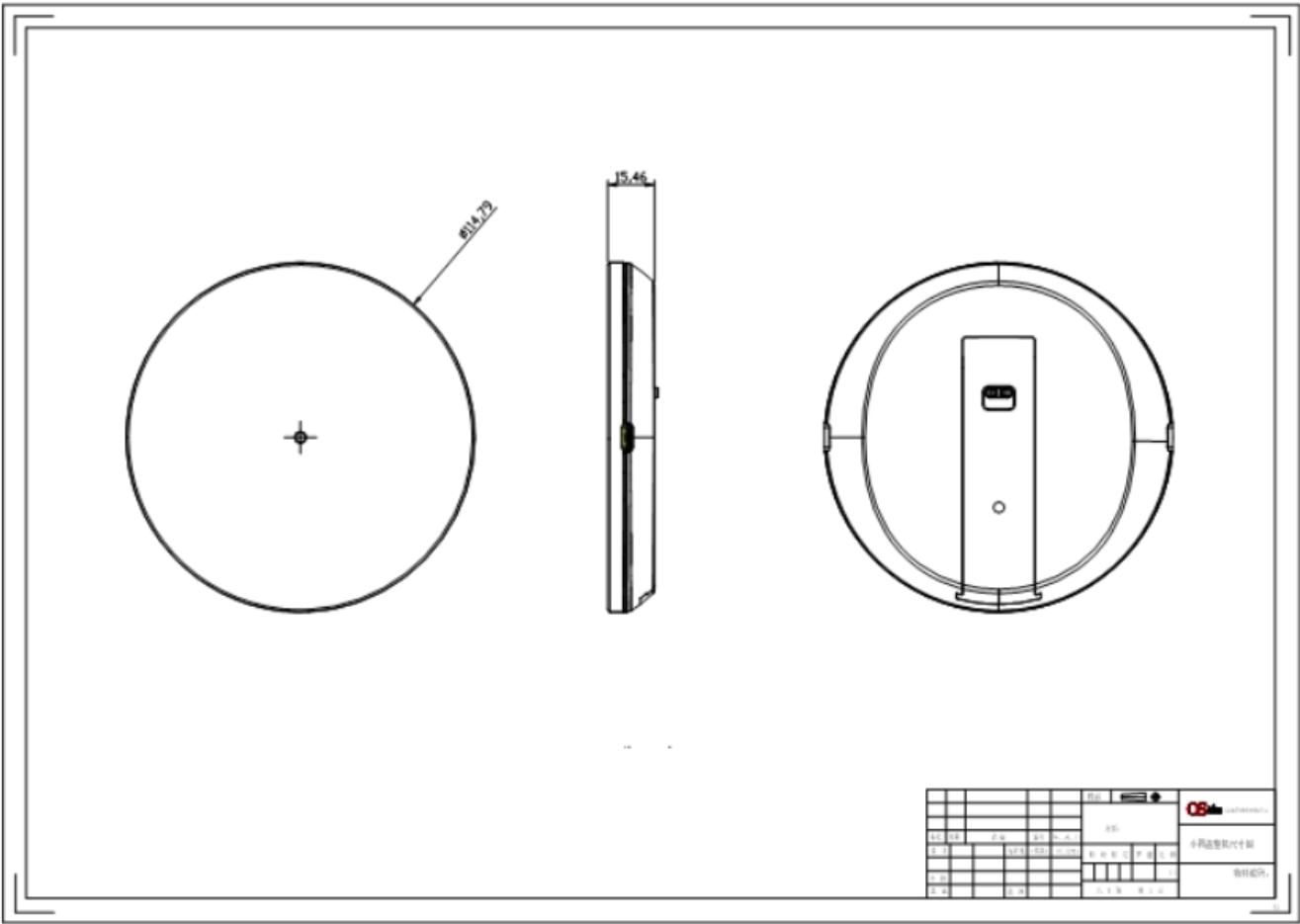
Wireless Charging Board Specifications

Size	Φ114.79*15.46mm
Current and Voltage	12V~21V/1.5A (max)
Power Consumption	<=15w
Power Input	Type-C, Support QC, PD protocol
Power Output	Type-C
Cascade Connection	Supports a maximum of 16 wireless charging boards
Wireless Power Supply	WPC Qi Version 1.2.4
Power Efficiency	>70%
Weight	0.12kg
Magnetic Attraction Force	about2.5KG
Size	<=5mm

Accessories

Wireless Charging Board	1
Adapter	1
Warranty Card	1
10.1" Screen	1

Product Appearance



FCC

This device complies with part 15 of the FCC rules. Operation is subject to the following two conditions:

1. this device may not cause harmful interference,

2. this device must accept any interference received, including interference that may cause undesired operation.

Changes or modifications not expressly approved by the party responsible for compliance could void the user's authority to operate the equipment.


NOTE: This equipment has been tested and found to comply with the limits for a Class B digital device, according to part 15 of the FCC Rules. These limits are designed to provide reasonable protection against harmful interference in a residential installation. This equipment generates uses and can radiate radio frequency energy and, if not installed and used under the instructions, may cause harmful interference to radio communications. However, there is no guarantee that interference will not occur in a particular installation. If this equipment does cause harmful interferenceto radio or television reception, which can be determined by turning the equipment off and on, the user is encouraged to try to correct the interference by one or more of the following measures:

- Reorient or relocate the receiving antenna.
- Increase the separation between the equipment and the receiver.
- Connect the equipment to an outlet on a circuit different from that to which the receiver is connected.
- Consult the dealer or an experienced radio/TV technician for help.

Radiation Exposure Statement

This equipment complies with FCC radiation exposure limits set forth for an uncontrolled environment. This equipment should be installed and operated with a minimum distance of 20cm between the radiator and your body.

Documents / Resources

	Pin-tura PNM101LEW3 Display Unit [pdf] Owner's Manual PNM101LEW3 Display Unit, PNM101LEW3, PNM101LEW3 Display, Display Unit, Display
---	---

References

- [User Manual](#)

[Manuals+.](#) [Privacy Policy](#)

This website is an independent publication and is neither affiliated with nor endorsed by any of the trademark owners. The "Bluetooth®" word mark and logos are registered trademarks owned by Bluetooth SIG, Inc. The "Wi-Fi®" word mark and logos are registered trademarks owned by the Wi-Fi Alliance. Any use of these marks on this website does not imply any affiliation with or endorsement.