

ottocast
PICASOU V240902
Plug In Car
Android System



PICASOU V240902 Plug In Car Android System Owner's Manual

[Home](#) » [PICASOU](#) » PICASOU V240902 Plug In Car Android System Owner's Manual 

Contents

- [1 PICASOU V240902 Plug In Car Android System](#)
- [2 Getting to know before using](#)
- [3 How to check a car has CarPlay or not](#)
- [4 What's in the box](#)
- [5 Specifications](#)
- [6 Connectors](#)
- [7 Quick settings](#)
- [8 Firmware update](#)
- [9 Documents / Resources](#)
 - [9.1 References](#)
- [10 Related Posts](#)



PICASOU V240902 Plug In Car Android System



Warning

To protect the driving safety of yourself and other road users, and to avoid breaking the traffic law in your respective country; please DO NOT watch videos while driving. Due to the product's continuous updating, some contents of this manual may differ from the product you actually purchased.

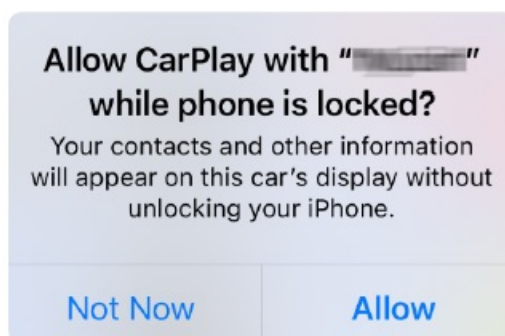
TIPS! To adapt to the factory display, the Android system will automatically restart once when the first time connecting to the car.

Getting to know before using

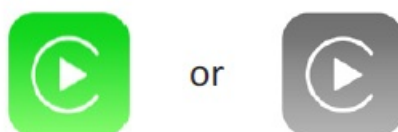
This AI box is designed for the factory car stereo with built-in wired Apple CarPlay, which can convert wired CarPlay into a full Android system. Besides, it integrates wireless Apple CarPlay/Android Auto functions.

How to check a car has CarPlay or not

1. Plug an iPhone (running iOS 10 or newer) into the car USB ports with genuine lightning cable. If there is a notification pop up on iPhone like below, that your car has built-in Apple CarPlay.



2. If there is a CarPlay icon in the car stereo menu, that your car has built-in Apple CarPlay.



3. Contact your car dealer for help.

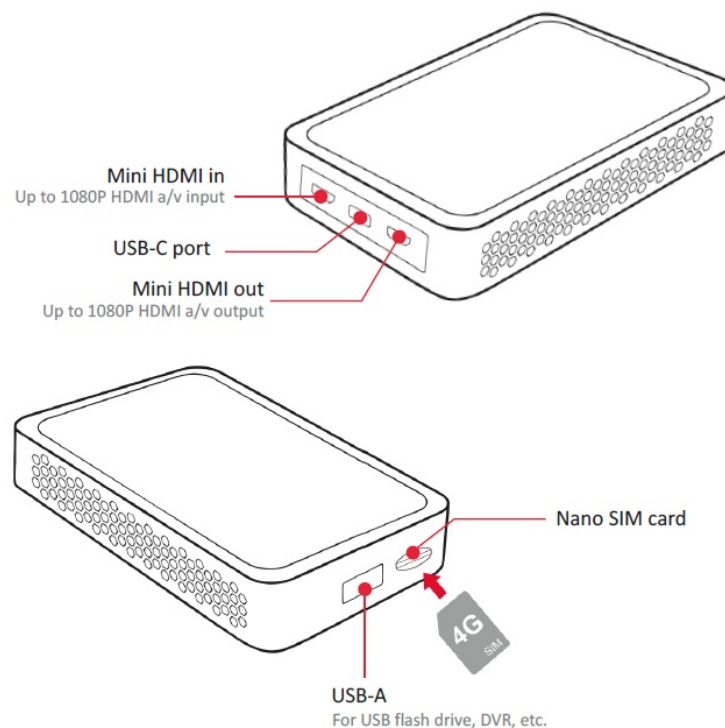
What's in the box

- Android AI box *1
- Bypass power cable *1
- USB cable (type-C to A) *1
- USB cable (type-C to C) *1
- User manual *1
- Installation guide *1

Specifications

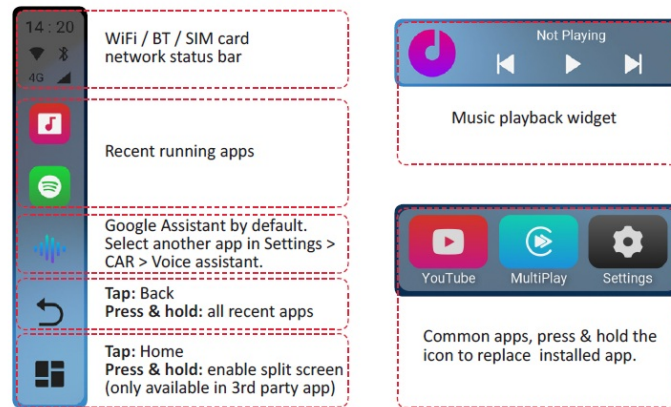
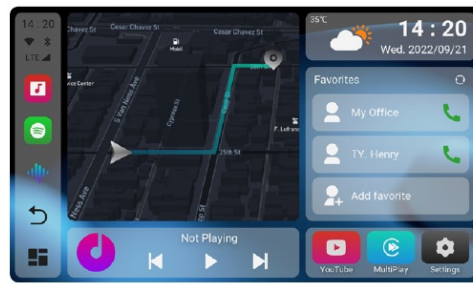
- **OS** Android 10
- **Processor** Qualcomm Snapdragon 665 Octa-core, 64 bit 11 nm, up to 2.0 GHz
- **RAM+ROM** 6GB + 64GB
- **Expandable Memory** USB flash drive, up to 128GB
- **SIM Card** 2G/3G/4G LTE Nano SIM card
- **Wi-Fi** Dual-band Wi-Fi 802.11 a/b/g/n/ac 2.4 GHz+5 GHz
- **Bluetooth** BT 5.0, for iPhone/Android smartphone hands-free calling & audio streaming, external BT mouse, remote controller, etc.
- **GNSS** Built-in GPS/GLONASS/Beidou
- **Power Input** USB 5V~1A
- **Operating Temperature** -30~75°C
- **Dimensions** 103.5*64.5*22 mm
- **Weight** 79g

Connectors

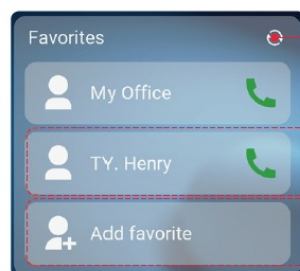


NOTE! Power off before inserting or removing the nano SIM card. Nano SIM card is not included in the package. For how to insert the card please refer to this diagram.

User Interface



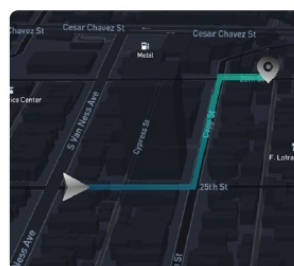
Weather & clock widget
Add your location by tapping the weather icon.



Long press: delete all favorite contact shortcuts

Tap: call this contact
Long press: replace the contact

Tap to add favorite contact shortcut
(please pair to Bluetooth first)



You could choose it as PIP navigation or a shortcut for any app.

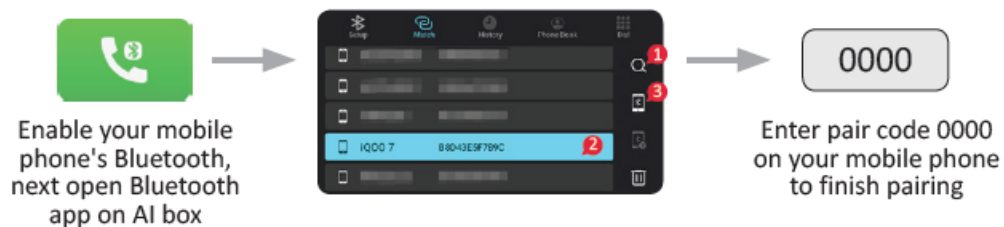
Shortcut: Open [PIP Widget] app > [Quick launch setting for any app] > [Select the quick launch app].

PIP navigation: Open [PIP Widget] app > [PIP Navi setting] > [Select the navigation app on PIP widget].

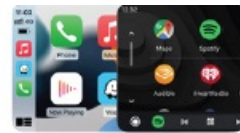
NOTE! The selected PIP maps will only display on the homepage with PIP mode instead of full-screen mode.

Quick settings

• Pairing your iPhone/Android phone with Bluetooth



• Setting up wireless Apple CarPlay/Android Auto



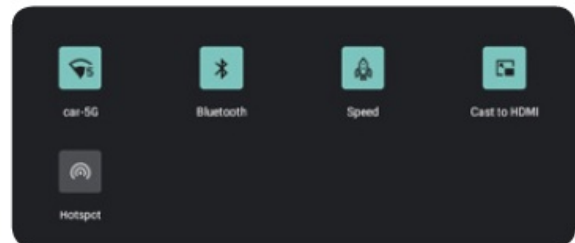
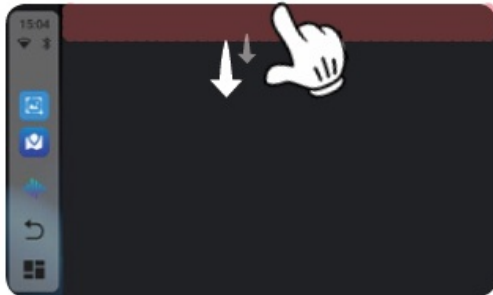
Pair your iPhone/
Android smartphone to
AI box's Bluetooth first.

Open MultiPlay app. Tap
confirm if there are pop-up
notifications on your phone.

NOTE! Using wireless CarPlay
or Android Auto will disable
the AI box's WiFi function.

TIPS! Disable [wireless auto connect] in MultiPlay app settings if you don't want to automatically start wireless CP/AA every time you pair to Bluetooth.

- **Opening notification bar**



Swipe down twice from the top.

- **Casting different contents to HDMI monitor**

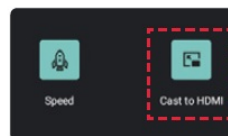
Preview



How to



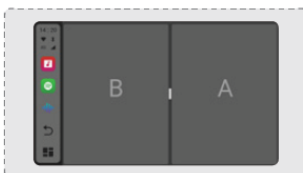
In video-playback app



Open the notification bar by twice swiping down from the top, next tap [Cast to HDMI] icon to start casting. Tap this icon again will disable casting.

- **Enable split-screen mode**

Preview



How to



Open any app supporting
split-screen mode



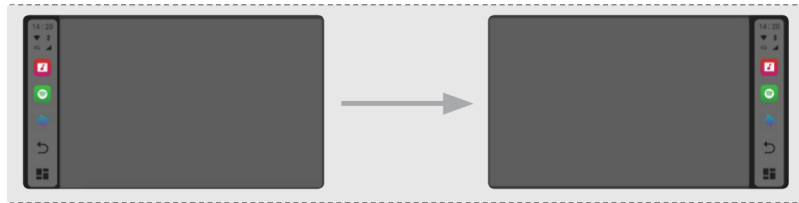
Press and hold
home button



Select another app. Press
and hold the home button
again to exit split mode.

- **Setting nav bar to the right side**

Preview

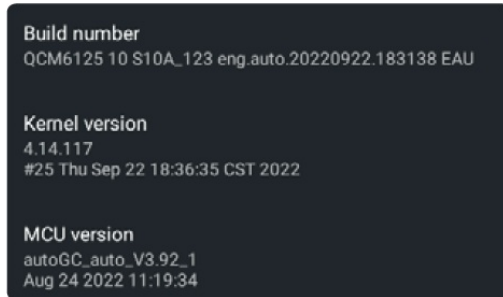


How to



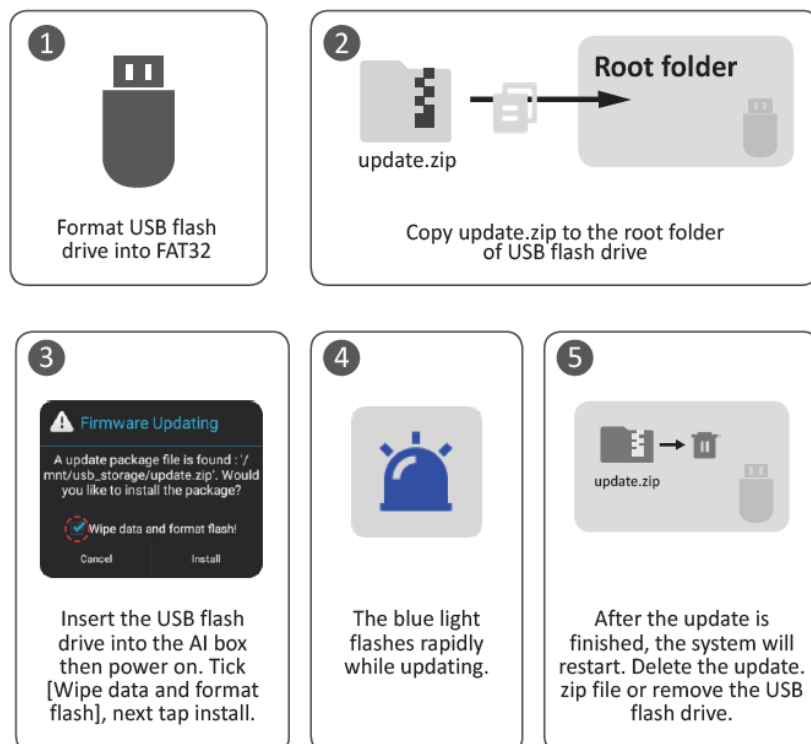
Go to Settings > CAR > Driving settings > Right Rudder, enable.

• Software version



Go to Settings > About machine > Build number

Firmware update




This device complies with part 15 of the FCC Rules.

Operation is subject to the following two conditions:

1. This device may not cause harmful interference
2. this device must accept any interference received, including interference that may cause undesired operation.

Google, Google Play, Android, Android Auto, are trademarks of Google Inc., registered in the U.S. and other countries. Apple, iPhone, iPad, and CarPlay are trademarks of Apple Inc., registered in the U.S. and other countries. We are not affiliated with Google Inc. or Apple Inc. All other product and service names mentioned are the trademarks of their respective companies.

Documents / Resources

<div><div>USER MANUAL</div><div>Plug In Car Android System</div><div>V240902</div><div></div><div>English / 0108</div></div>	<div><div>PICASOU V240902 Plug In Car Android System [pdf] Owner's Manual</div><div>V240902 Plug In Car Android System, V240902, Plug In Car Android System, Car Android System, Android System, System</div></div>
---	---

References

- [User Manual](#)

[Manuals+.](#) [Privacy Policy](#)

This website is an independent publication and is neither affiliated with nor endorsed by any of the trademark owners. The "Bluetooth®" word mark and logos are registered trademarks owned by Bluetooth SIG, Inc. The "Wi-Fi®" word mark and logos are registered trademarks owned by the Wi-Fi Alliance. Any use of these marks on this website does not imply any affiliation with or endorsement.