



# phrozen Beam Care Post Curing UV Light String User Manual

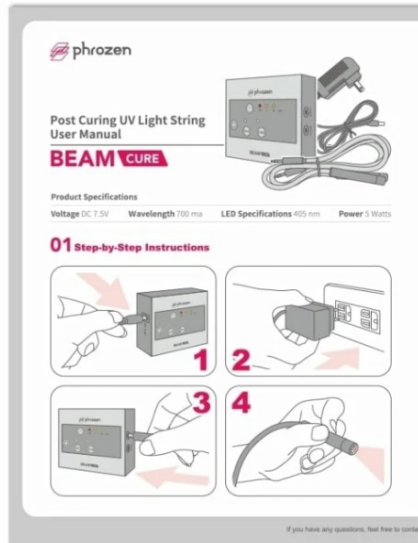
[Home](#) » [phrozen](#) » phrozen Beam Care Post Curing UV Light String User Manual 

## Contents

- [1 phrozen Beam Care Post Curing UV Light String](#)
- [2 Product Specifications](#)
- [3 Step-by-Step Instructions](#)
- [4 Button Functionality](#)
- [5 Documents / Resources](#)
- [6 Related Posts](#)

# phrozen

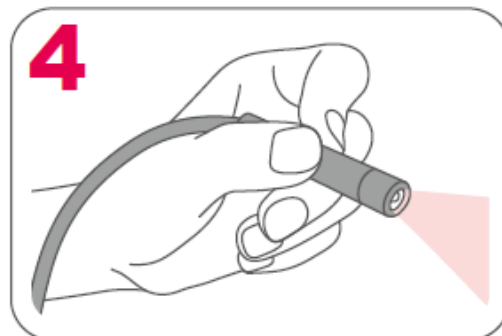
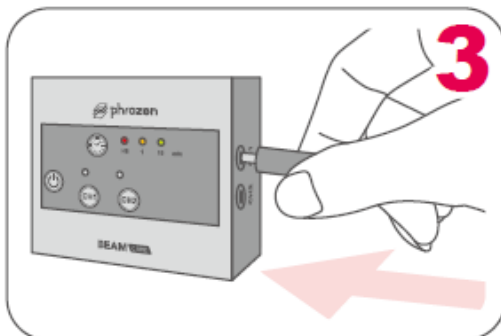
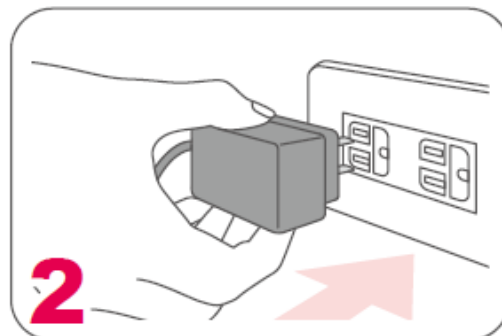
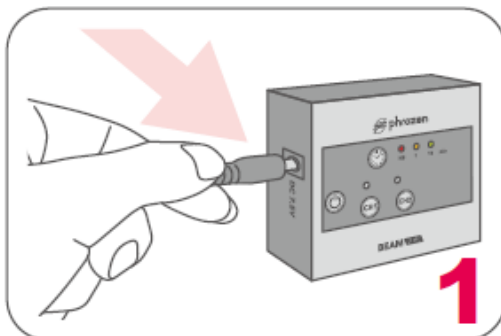
phrozen Beam Care Post Curing UV Light String



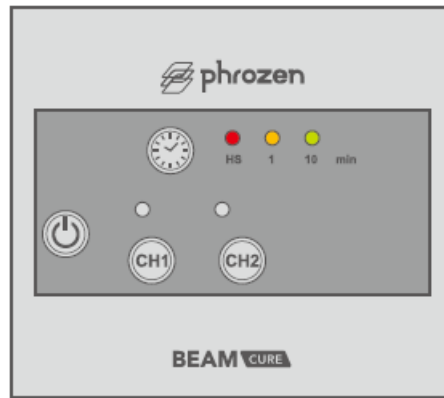
## Product Specifications

- **Voltage** DC 7.5V
- **avelength** 700 ma
- **LED Specifications** 405 nm
- **Power** 5 Watts

## Step-by-Step Instructions



## Button Functionality



### TIMER H.S

When the device is turned on manually, the red indicator light will be turned on as well. The UV light will then be on continuously until the device has been turned off. If the UV light hasn't been used for 60 minutes, the device will automatically turn off.

### POWER

Click on the Power button to turn on (or turn off) the device. Once the device has been turned on, the indicator light from the Timer H.S button will light up in red. Click on the Power button one more time to turn off the device.

### TIMER 1 MIN

When the yellow indicator light is turned on, the UV light will automatically turn off after 1 minute.

### TIMER 10 MIN

When the green indicator light is turned on, the UV light will automatically turn off after 10 minutes.

### CH1

This is the CH1 electric power connector.

### CH2

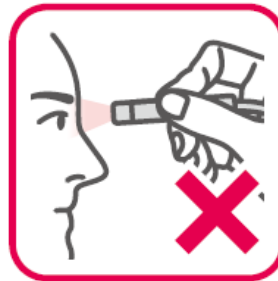
This is the CH2 electric power connector.

## Warning





- DO NOT stare directly at the UV light.
- Please wear safety glasses before usage.
- DO NOT touch or poke the UV light source with sharp objects.
- Please do not use electric cords from other devices.
- Do not use any chemicals to rub the lense of the UV light device.
- Do not use it with other adaptors.



#### Maintenance :

Please use sanitizing alcohol to clean the exterior of the device. Do not use any oily or corrosive liquids to clean the device.



Facebook



Facebook  
Group



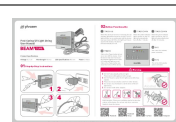
YouTube



Instagram

Please follow Phrozen's social media accounts and subscribe to our YouTube channel to learn more about printing tips and share ideas with one another. Feel free to contact us if you have any questions.

#### Documents / Resources



[phrozen Beam Care Post Curing UV Light String](#) [pdf] User Manual  
Beam Care Post Curing UV Light String, Beam Care, Post Curing UV Light String, Light String, String