



PHOTOShare 200801 SSH Photo Frame User Guide

[Home](#) » [PHOTOShare](#) » PHOTOShare 200801 SSH Photo Frame User Guide 



<https://sshhome.com/guides>

Scan the QR Code above to see the Online Guide or visit www.sshhome.com/guides

QUICK START GUIDE

Contents

- 1 Turn on your PhotoShare Frame:
- 2 Connect your PhotoShare Frame to WiFi:
- 3 Install the PhotoShare Frame App:
- 4 Create your PhotoShare Account:
- 5 Multiple Ways to Share
- 6 Create Your Own Personal Photo & Message Social Network!
- 7 Cool Tips and Fun Features
- 8 Limited Warranty
- 9 Documents / Resources
 - 9.1 References
- 10 Related Posts

Turn on your PhotoShare Frame:

Use the included AC power adapter to plug your PhotoShare Frame into an available outlet.

Connect your PhotoShare Frame to WiFi:

After selecting your time zone, you will be prompted to select your WiFi network and enter your WiFi password. Once the WiFi is connected, you will be prompted to install the PhotoShare Frame App. Please do not tap Next until you have installed the PhotoShare Frame App

Install the PhotoShare Frame App:

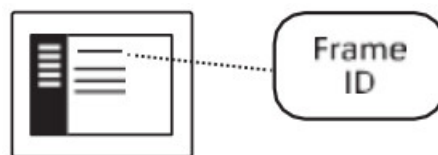
Visit the iTunes App Store or Google Play to download the PhotoShare Frame App on your mobile device. Please Include App Icon and APP store Bugs



Create your PhotoShare Account:

Launch the PhotoShare Frame App and select Create New Account. You will be asked to enter your name & email address. Once entered, please tap Register. You will then be asked to log in with your email address and password.

Return to the Frame and tap Next. You will then see the Frame ID. Please enter this Frame ID as prompted in the App.



Lastly, you will be asked to name your Frame.

Multiple Ways to Share

1. PhotoShare Frame App: Select one or more photos by tapping on the thumbnail, and select the Frame(s) you'd like to share photos with. Tap Send Photos.
2. Email: Send photos as email attachments directly to your PhotoShare Frame's unique email address. The Frame email address can be found in the PhotoShare Frame App by tapping the Settings icon (⚙️), then Edit Frame and selecting your PhotoShare Frame
3. PC or Link with Facebook: From your web browser, visit www.PhotoShareFrame.com and log in using the email/password that you use for the PhotoShare Frame App. Select photos on your PC or log in to your Facebook account to share your favorite pictures.
4. Google Photos or other Photo App: Select your favorite photos, tap the Send icon and select the PhotoShare Frame App as the destination. The App will launch and you'll be able to select one or more Frames and Send Photos.

Create Your Own Personal Photo & Message Social Network!

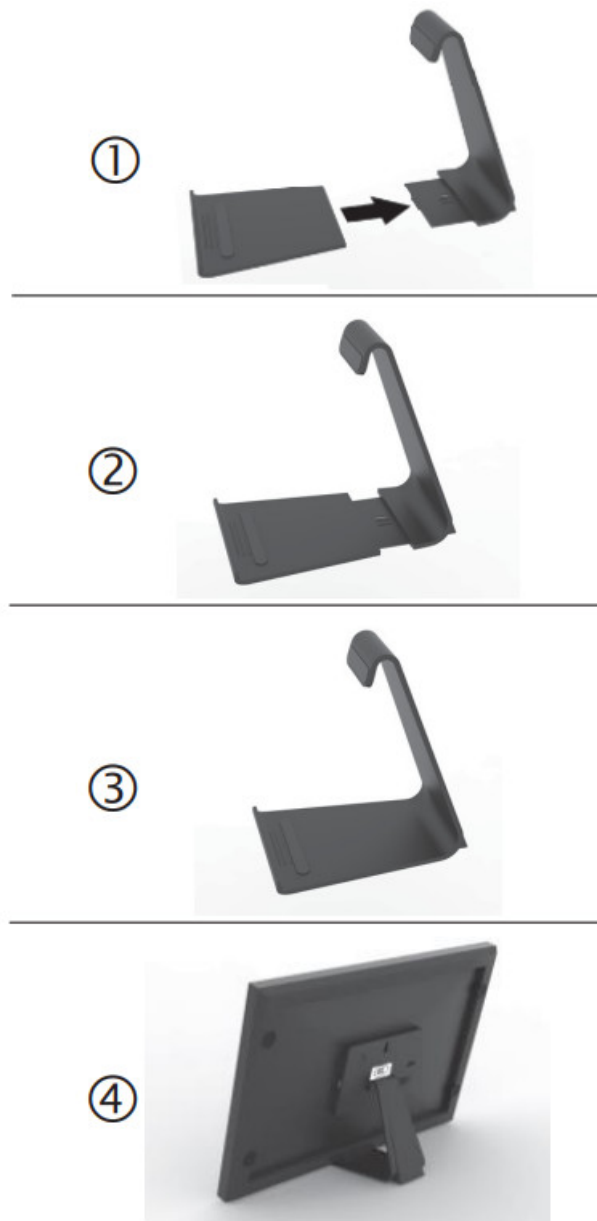
Do you have friends and family who also own PhotoShare Frames? You can add multiple Frames to your PhotoShare Frame App by tapping the Settings icon () and selecting Add Frame. Simply enter their Frame ID and you'll be ready to share.

Cool Tips and Fun Features

Your PhotoShare Frame includes several unique and powerful features that make it fun and easy to enjoy your favorite photos.

Auto-Dim: The built-in light sensor will automatically adjust the brightness of the screen and switch to a clock display when the room is fully dark. Auto-dim settings can be found by accessing the Main Menu and then tapping Settings, Frame Settings and finally Display.

Sound Notifications: Your PhotoShare Frame will play an audio chime when new photos are received. This chime can be Turned Up, Turned Down, or Turned Off by accessing the Main Menu and then tapping Settings, Frame Settings, and then Sound.



IMPORTANT!

Please register your PhotoShare Frame online at mysimplysmarthome.com/register/

LIMITATIONS: TO THE EXTENT PERMITTED BY LAW, THE WARRANTY AND REMEDIES SET FORTH ABOVE ARE EXCLUSIVE AND IN LIEU OF ALL OTHER WARRANTIES AND REMEDIES, AND WE SPECIFICALLY

DISCLAIM ALL STATUTORY OR IMPLIED WARRANTIES, INCLUDING, BUT NOT LIMITED TO, WARRANTIES OF MERCHANTABILITY, FITNESS FOR A PARTICULAR PURPOSE AND AGAINST HIDDEN OR LATENT DEFECTS. IF WE CANNOT LAWFULLY DISCLAIM STATUTORY OR IMPLIED WARRANTIES, THEN TO THE EXTENT PERMITTED BY LAW, ALL SUCH WARRANTIES SHALL BE LIMITED IN DURATION TO THE DURATION OF THIS EXPRESS LIMITED WARRANTY AND TO REPAIR OR REPLACEMENT SERVICE. SOME JURISDICTIONS DO NOT ALLOW LIMITATIONS ON HOW LONG A STATUTORY OR IMPLIED WARRANTY LASTS, SO THE ABOVE LIMITATION MAY NOT APPLY TO YOU. WE ARE NOT RESPONSIBLE FOR DIRECT, SPECIAL, INCIDENTAL OR CONSEQUENTIAL DAMAGES RESULTING FROM ANY BREACH OF WARRANTY OR UNDER ANY OTHER LEGAL THEORY. IN SOME JURISDICTIONS THE FOREGOING LIMITATION DOES NOT APPLY TO DEATH OR PERSONAL INJURY CLAIMS, OR ANY STATUTORY LIABILITY FOR INTENTIONAL AND GROSS NEGLIGENT ACTS AND/OR OMISSIONS, SO THE ABOVE EXCLUSION OR LIMITATION MAY NOT APPLY TO YOU. SOME JURISDICTIONS DO NOT ALLOW THE EXCLUSION OR LIMITATION OF DIRECT, INCIDENTAL OR CONSEQUENTIAL DAMAGES, SO THE ABOVE EXCLUSION OR LIMITATION MAY NOT APPLY TO YOU.

All content included on the SWITCHMATE HOME LLC Devices, including text, graphics, logos, designs, button icons, images, data compilations, and software, are the property of SWITCHMATE HOME LLC or its suppliers and partners and is protected by the United States and international copyright laws or other intellectual property laws and treaties. Said content shall not be reproduced or used without express written permission from SWITCHMATE HOME LLC and its suppliers and partners respectively. Use of this product constitutes acceptance of these terms and conditions of the warranty. To obtain technical support and warranty service, please call 1-800-736-SWITCH (7948).

Limited Warranty

The limited warranty set forth below is given by SWITCHMATE HOME LLC with respect to the Switchmate® HOME LLC line of products (the "Device") purchased and used in the United States of America. SWITCHMATE HOME LLC warrants this product as follows: **LABOR:** For a period of one (1) year from the date of purchase, if this Device is found to be defective, SWITCHMATE HOME LLC will repair or replace the Device, at its sole option, at no charge. After this one (1) year period, labor charges will be charged on a case by case basis. If your device is repaired or replaced during the Warranty Period, it will be covered by this Limited Warranty for the remainder of the original Warranty Period or ninety (90) days from the date of shipment of the replaced Device, whichever is longer. **PARTS:** For a period of one (1) year from the date of purchase, if this Device is found to be defective, SWITCHMATE HOME LLC will supply at no cost, new or rebuilt replacement parts, at its option, at no charge. After this one (1) year period, parts will be charged for on a case-by-case basis. Modifications not approved by the party responsible for compliance will void the user's authority to operate the equipment. If your device is repaired or replaced during the Warranty Period, it will be covered by this Limited Warranty for the remainder of the original Warranty Period or ninety (90) days from the date of shipment of the replaced Device, whichever is longer. This Limited Warranty does not cover damage or malfunctions caused by accident, disaster, misuse, abuse, negligence or other external causes; third-party products; Internet or telecommunications failures; commercial use; unauthorized opening, use, service, tampering, alteration, repair or modification; or inadequate packing or shipping procedures. This Limited Warranty also does not cover cosmetic damage or normal wear and tear. This Limited Warranty does not apply to Devices sold as used, refurbished or reconditioned. This Limited Warranty does not cover damage caused by third-party applications such as viruses, malware or other software. This Limited Warranty will be void if your Device has been opened or serviced without authorization, tampered with, altered, or modified. This Limited Warranty applies to your Device only (i.e., the hardware), and not to the software within your device. Similarly, this Limited Warranty does not cover downloaded data or materials, or accessories and peripherals, except as expressly provided above. This warranty is valid only in the United States and Canada. The Device must be accompanied by a copy of the original retail purchase receipt for the warranty to be valid. If no proof of purchase is attached, the warranty will not be honored and repair costs incurred will be the responsibility of the end-user. This warranty is only valid with written documentation detailing the complaint attached to the outside or inside of the carton. This warranty does not provide protection for the loss of data, regardless of format or cause. SWITCHMATE HOME LLC reserves the right to modify and change the design of this Device without prior notice, written or otherwise.

IC Notice:

This device complies with Canada Industry licence-exempt RSS standard(s). Operation is subject to the following two conditions:


1. this device may not cause interference, and
2. this device must accept any interference. Including interference that may cause undesired operation of the device.

CAN ICES-3 (B)







For Customer Service

please email Support@PhotoshareFrame.com or call 888-673-9033

Documents / Resources

	PHOTOShare 200801 SSH Photo Frame [pdf] User Guide 200801, SSH Photo Frame, photo frame, ssh, frame
---	--

References

-  Support@PhotoshareFrame.com
-  [Register Products | Simply Smart Home](#)
-  [PhotoShare Frame](#)
-  [PhotoShare Frame](#)
-  [PhotoShare Frame](#)
-  [Guides | Simply Smart Home](#)