

photoniconiverse
photoniconivers
e WFBLE DTU
PlugProA 29
Modbus
Datalogger Wi-Fi
Serial Port
Device Server



photoniconiverse WFBLE DTU PlugProA 29 Modbus Datalogger Wi-Fi Serial Port Device Server User Guide

[Home](#) » [photoniconiverse](#) » photoniconiverse WFBLE DTU PlugProA 29 Modbus Datalogger Wi-Fi Serial Port Device Server User Guide 

Contents

- [1 photoniconiverse WFBLE DTU PlugProA 29 Modbus Datalogger Wi-Fi Serial Port Device Server](#)
- [2 Installation](#)
- [3 Register an account and add items](#)
- [4 Connectivity](#)
- [5 Documents / Resources](#)
 - [5.1 References](#)
- [6 Related Posts](#)

photoniconiverse

photoniconiverse WFBLE DTU PlugProA 29 Modbus Datalogger Wi-Fi Serial Port Device Server



WFBLE.DTU. PlugPro Quick Installation Guideline

Installation

- COM: Communication Status LED Indicator
- NET: Network Status LED Indicator
- SRV: Server Status LED Indicator

Equipment Distribution Network Process

1. Click Networking Configuration in the My page.
2. The mobile phone connects to the digital collector APP to scan the nearby Bluetooth device.
3. Configure a network for the device. Click the Wi-Fi icon, select the router to configure, and fill in the password, and click "Start Connecting" button.
4. Check the distribution network results and wait for 30s after entering the configuration, and the APP will feedback information according to the distribution network results.
 - If the distribution network is successful, the addition is successful. After waiting for about 5-10 minutes, the equipment data can be viewed normally.
 - If the configuration fails, check the problem according to the Diagnostic Results and Repair Suggestions.

Specifications

Feature	Description
App Compatibility	iOS & Android
Connection Type	Bluetooth, Wi-Fi
LED Indicators	PWR, COM, NET, SRV

WFBLE.DTU. PlugPro

Quick Installation Guideline

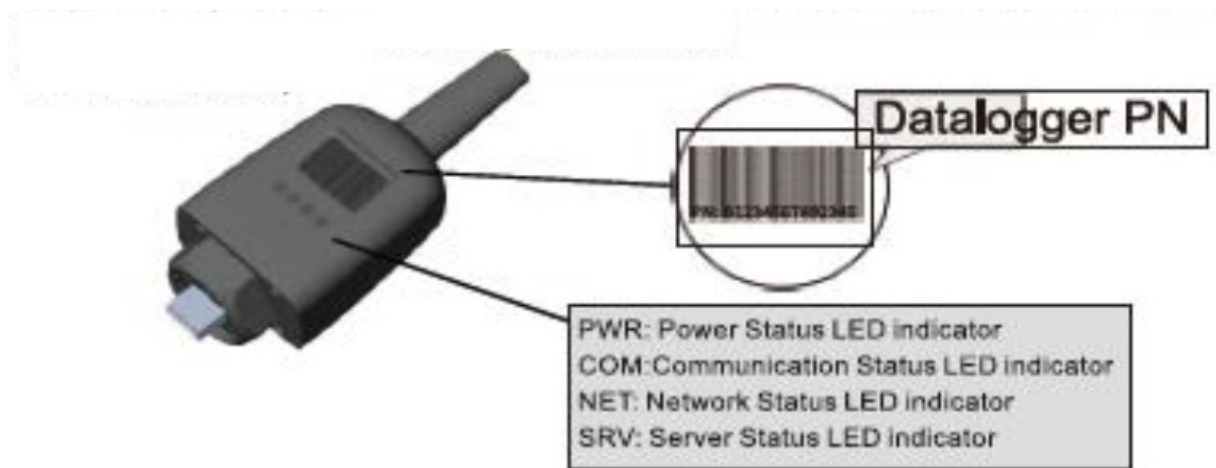
WFBLE. DTU. Plug Pro A – 29



Installation

1. Align the serial port of the Wi-Fi Plug Pro with the inverter and plug it in tightly.
2. Fasten the Wi-Fi Plug Pro to the inverter with the screw.
3. Confirm the status of the LED indicator (After step2.3, when 4 LED indicators keep on, showing the normal working status).





Register an account and add items

Registered Account

1. Scan the QR code on the Quick installation guide download APP
2. Open the APP click register and fill in the relevant according to the prompts



Project List

1. In the monitoring page, click the item to view all items under the account
2. After adding the device, the system automatically creates a default item



Create Project

Click the create project in the upper right corner of the monitoring page, enter the create project interface to fill in the information according to the prompts, click OK to complete the create project creation



Connectivity

Add devices with a Bluetooth distribution network

Add Device

On the "Monitoring" page, click the "+" button in the upper right corner and select "Add Device" to enter the add device page



Bluetooth Add

After ensuring that the device is powered on, click "Bluetooth Add", select the same device as the device name / PN, and click the "+" icon



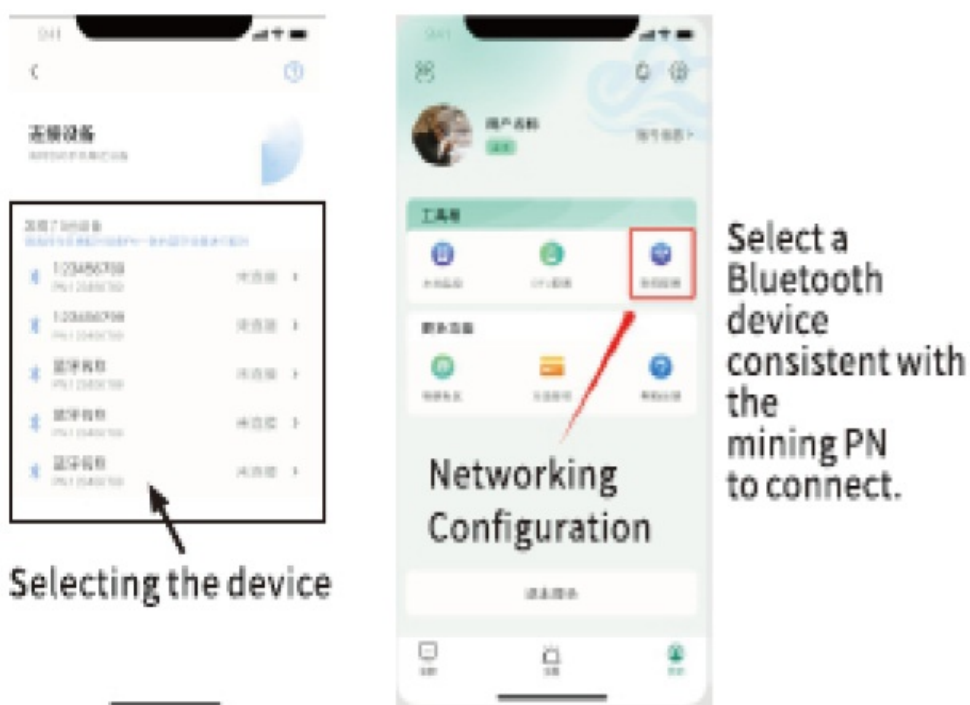
Scan code Add

Click “Scan code Add”, scan the QR code of the data collector, or click • Enter PN” in the lower left corner to add the device



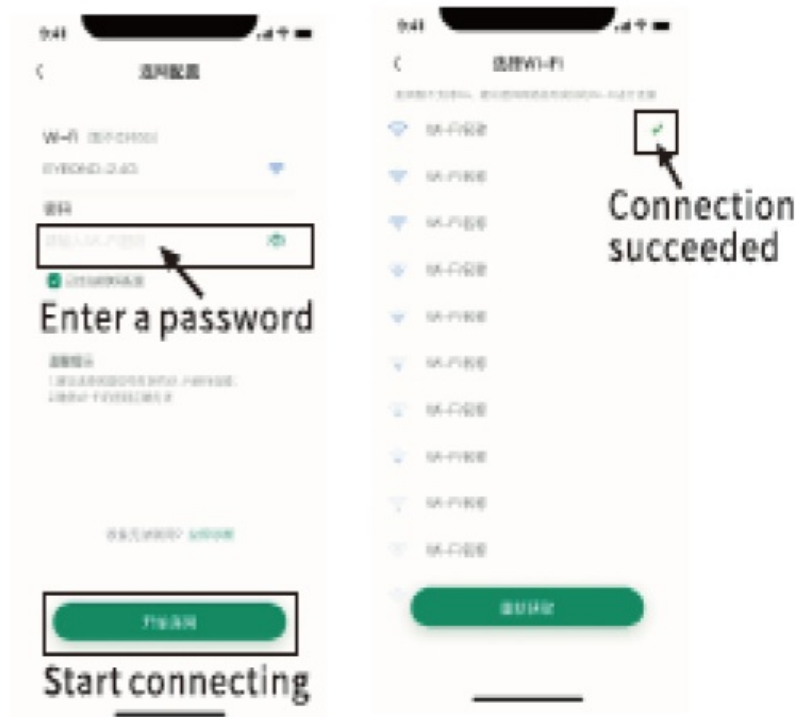
Equipment distribution network process

1. Click Networking Configuration in the My page.
2. The mobile phone connects to the digital collector. APP to scan the nearby Bluetooth device.



3. Configure a network for the device. Click  icon, select the router to configure and fill in the password,

and click “Start Connecting” button



4. Check the distribution network results and wait for 30s after entering the configuration, and the APP will feedback information according to the distribution network results



1. If the distribution network is successful, the addition is successful. After waiting for about 5-10 minutes, the equipment data can be viewed normally;
2. If the configuration fails, check the problem according to the diagnostic Results and Repair Suggestions

FAQ

How do I download the app?

Scan the QR code provided in the Quick Installation guide to download the app.

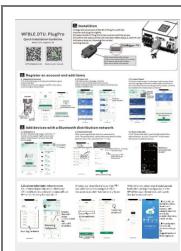
What should I do if the LED indicators do not light up?

Ensure that the Wi-Fi Plug Pro is properly aligned and fastened to the inverter.

What if the configuration fails?

Check the problem according to the Diagnostic Results and Repair Suggestions provided by the app.

Documents / Resources



[photonicuniverse WFBLE DTU PlugProA 29 Modbus Datalogger Wi-Fi Serial Port Device Server](#) [pdf] User Guide
29, WFBLE DTU PlugProA 29 Modbus Datalogger Wi-Fi Serial Port Device Server, WFBLE DTU PlugProA 29, Modbus Datalogger Wi-Fi Serial Port Device Server, Datalogger Wi-Fi Serial Port Device Server, Wi-Fi Serial Port Device Server, Serial Port Device Server, Device Server, Server

References

- [User Manual](#)

[Manuals+](#), [Privacy Policy](#)

This website is an independent publication and is neither affiliated with nor endorsed by any of the trademark owners. The "Bluetooth®" word mark and logos are registered trademarks owned by Bluetooth SIG, Inc. The "Wi-Fi®" word mark and logos are registered trademarks owned by the Wi-Fi Alliance. Any use of these marks on this website does not imply any affiliation with or endorsement.