


PHONAK
PHONAK Roger On 3
Microphone Transmitter



PHONAK Roger On 3 Microphone Transmitter User Guide

[Home](#) » [PHONAK](#) » PHONAK Roger On 3 Microphone Transmitter User Guide 

Contents

- [1 PHONAK Roger On 3 Microphone Transmitter](#)
- [2 Product Information](#)
- [3 Product Usage Instructions](#)
- [4 Setup Guide for Roger On RogerDirect™](#)
- [5 Documents / Resources](#)
 - [5.1 References](#)
- [6 Related Posts](#)

PHONAK

PHONAK Roger On 3 Microphone Transmitter



Product Information

Specifications

- Model: Roger On 3
- Manufacturer: Sonova Communications AG
- Country of Origin: Switzerland
- Website: www.phonak.com/roger

Product Usage Instructions

Setting Up Roger On with Hearing Aids

1. Press and hold the large center button and the small button with the chain icon on the backside for two seconds.
2. You should see a flashing hearing aid icon. Switch on your **right** hearing aid and place it close to Roger On.
3. Wait until you see a solid green LED. Switch on your **other** hearing aid.
4. Switch on your Roger On device.

Connecting Left Hearing Aid to Roger On

1. Press and hold the large center button and the small button with the chain icon on the backside for two seconds.
2. You should see a flashing hearing aid icon. Switch on your **left** hearing aid and place it close to Roger On.
3. Wait until you see the check mark on the display. Switch off your left hearing aid.

Frequently Asked Questions (FAQ)

- **Q: How do I know if Roger On is successfully connected to my hearing aids?**

A: When the LED light on Roger On turns solid green, it indicates successful connection with your hearing aids.

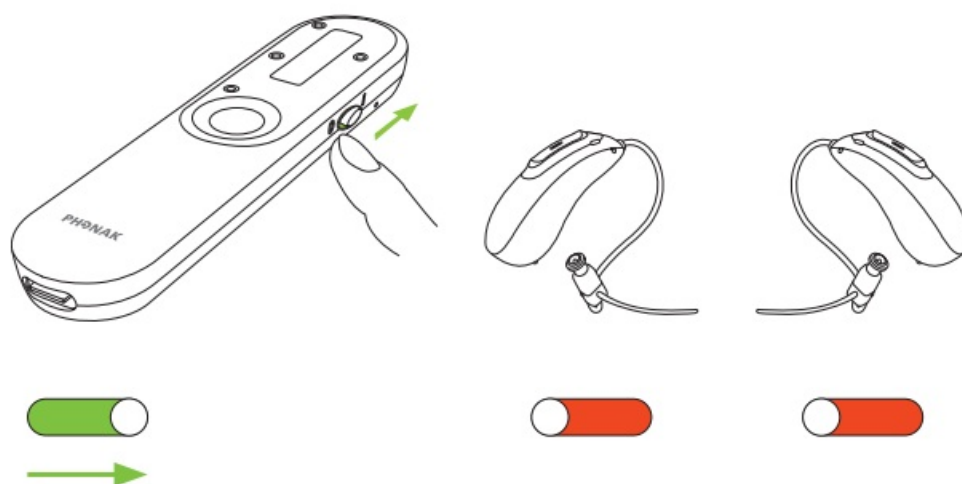
- **Q: Can I connect multiple hearing aids to Roger On?**

A: Yes, you can connect both your left and right hearing aids to Roger On for an enhanced listening experience.

Roger™

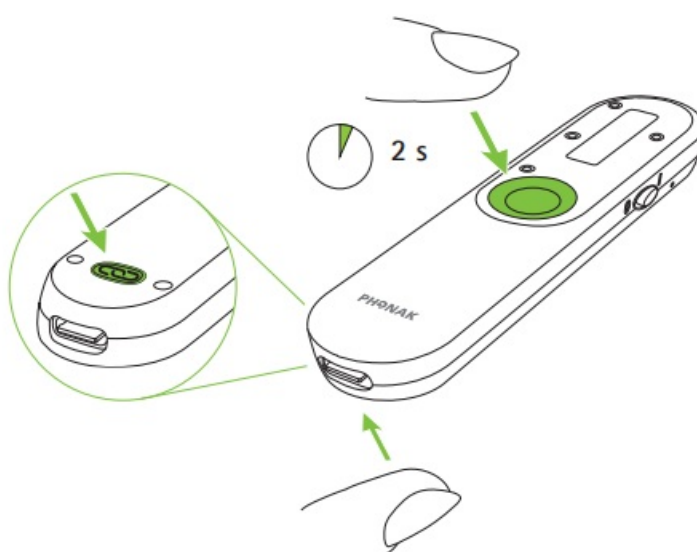
RogerDirect™

Setup Guide for Roger On RogerDirect™



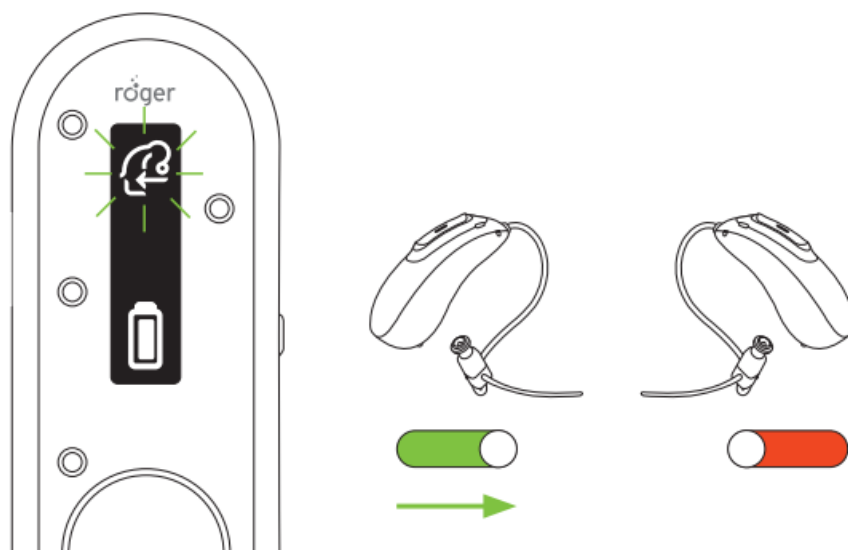
- Switch on your Roger On.

2



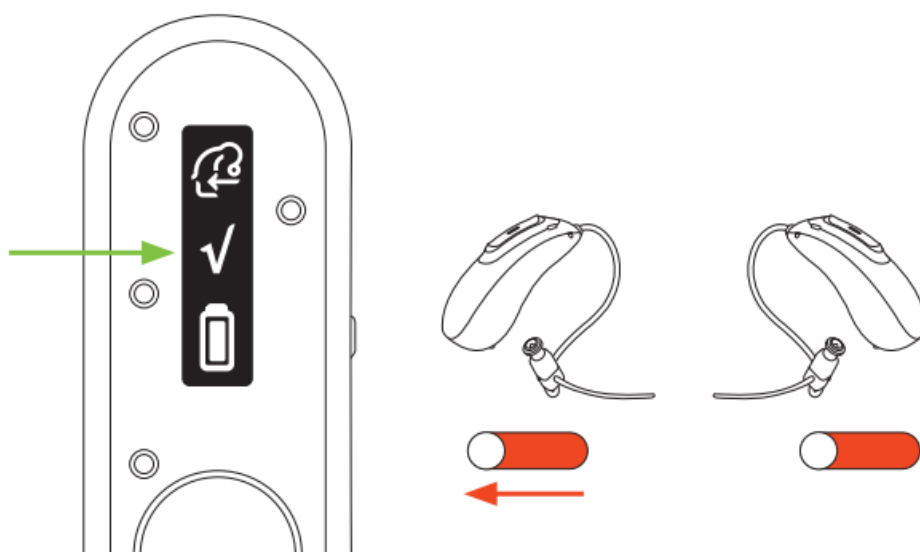
- Press and hold the large center button and the small button with the chain icon on the backside for two seconds.

3



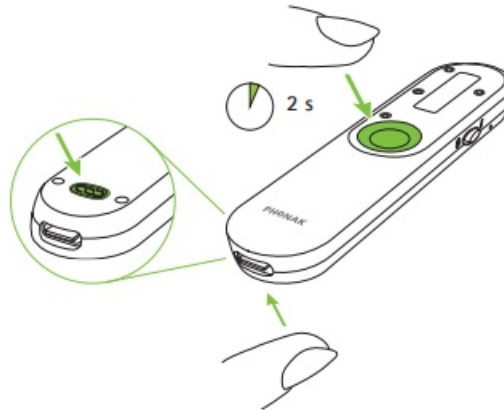
- You should see a flashing hearing aid icon. Then switch on your left hearing aid and place it close to Roger On.

4



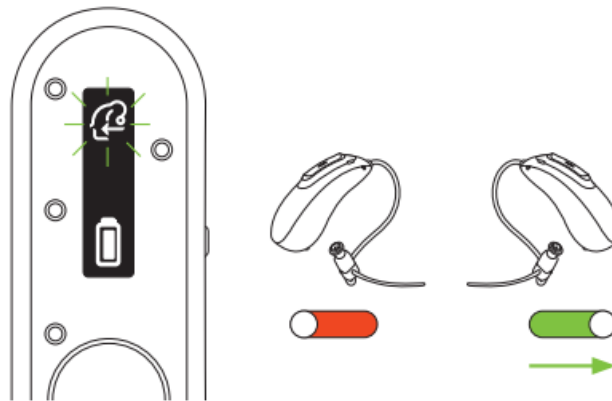
- Wait until you see the check on the display. Then switch off your left hearing aid.

5



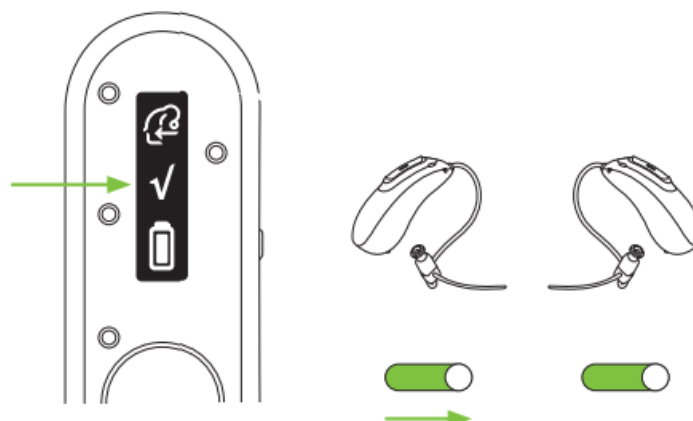
- Press and hold the large center button and the small button with the chain icon on the backside for two seconds.

6



- You should see a flashing hearing aid icon. Then switch on your right hearing aid and place it close to Roger On.

7



- Wait a few seconds until you see a solid green LED. Then switch on your other hearing aid.

Model: Roger On 3

Documents / Resources



[PHONAK Roger On 3 Microphone Transmitter](#) [pdf] User Guide
Roger On 3 Microphone Transmitter, Microphone Transmitter, Transmitter

References

- [User Manual](#)

Manuals+, Privacy Policy

This website is an independent publication and is neither affiliated with nor endorsed by any of the trademark owners. The "Bluetooth®" word mark and logos are registered trademarks owned by Bluetooth SIG, Inc. The "Wi-Fi®" word mark and logos are registered trademarks owned by the Wi-Fi Alliance. Any use of these marks on this website does not imply any affiliation with or endorsement.