

PHONAK
life is on
**3 Roger
Select**



PHONAK 3 Roger Select User Guide

[Home](#) » [PHONAK](#) » PHONAK 3 Roger Select User Guide 

Contents

- [1 PHONAK 3 Roger Select](#)
- [2 Product Specifications](#)
- [3 Charging](#)
- [4 Switching on](#)
- [5 Connecting](#)
- [6 Using Instructions](#)
- [7 FAQ](#)
- [8 More Information](#)
- [9 Documents / Resources](#)
 - [9.1 References](#)

PHONAK
life is on

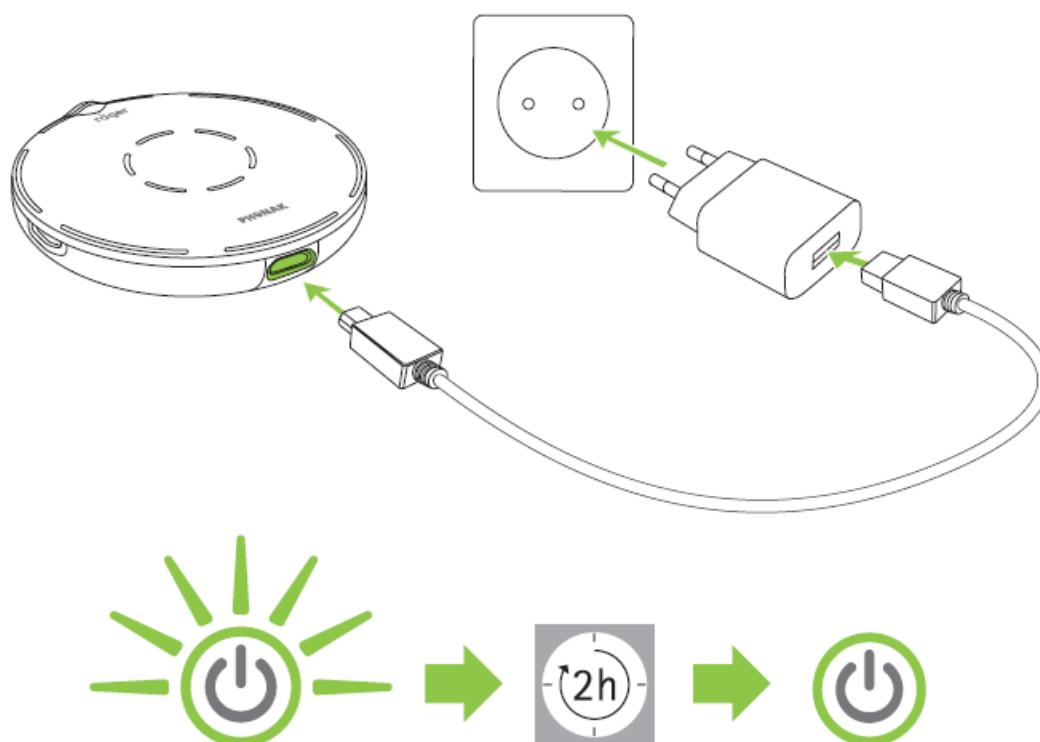
PHONAK 3 Roger Select



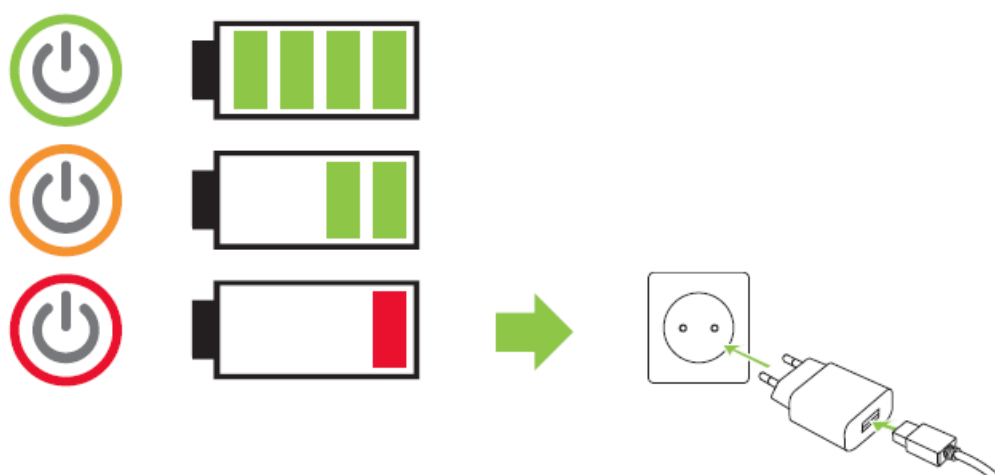
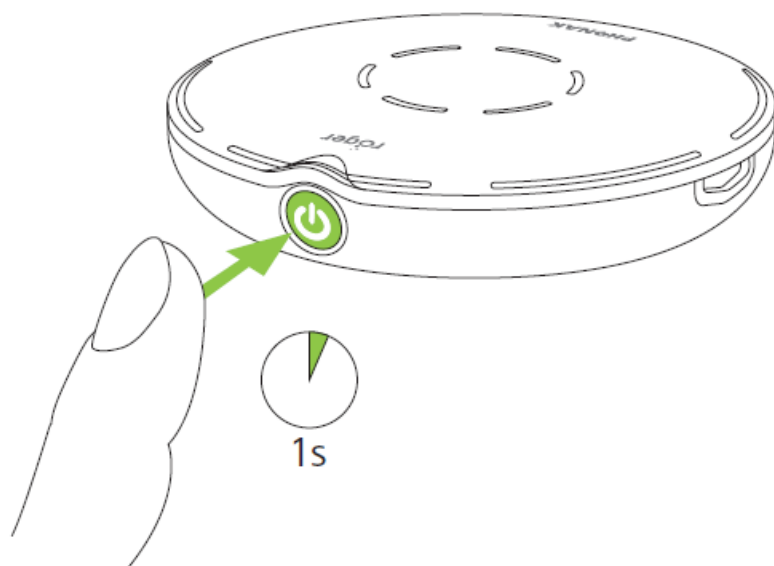
Product Specifications

- **Model:** Roger Select 3
- **Manufacturer:** Sonova Communications AG
- **Address:** Herrenschwandweg 4 CH-3280 Murten Switzerland
- **Website:** www.phonak.com/roger

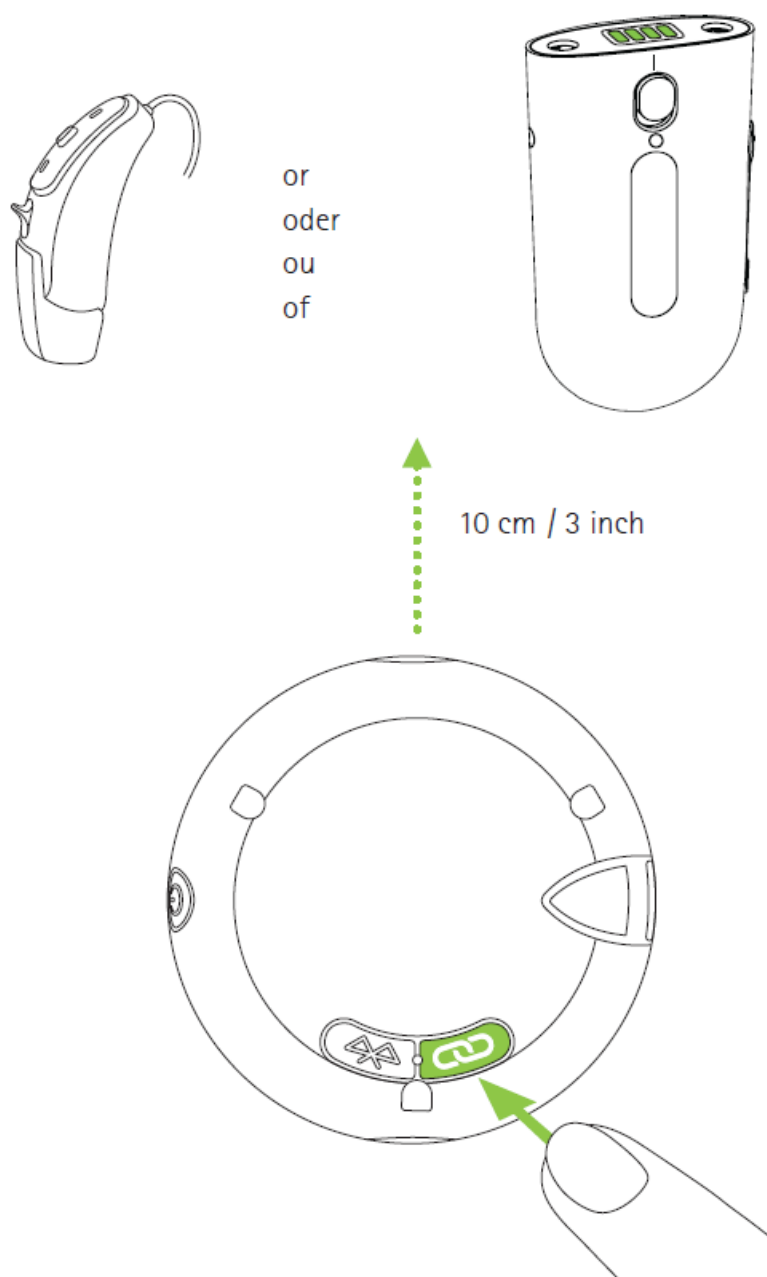
Charging



Switching on

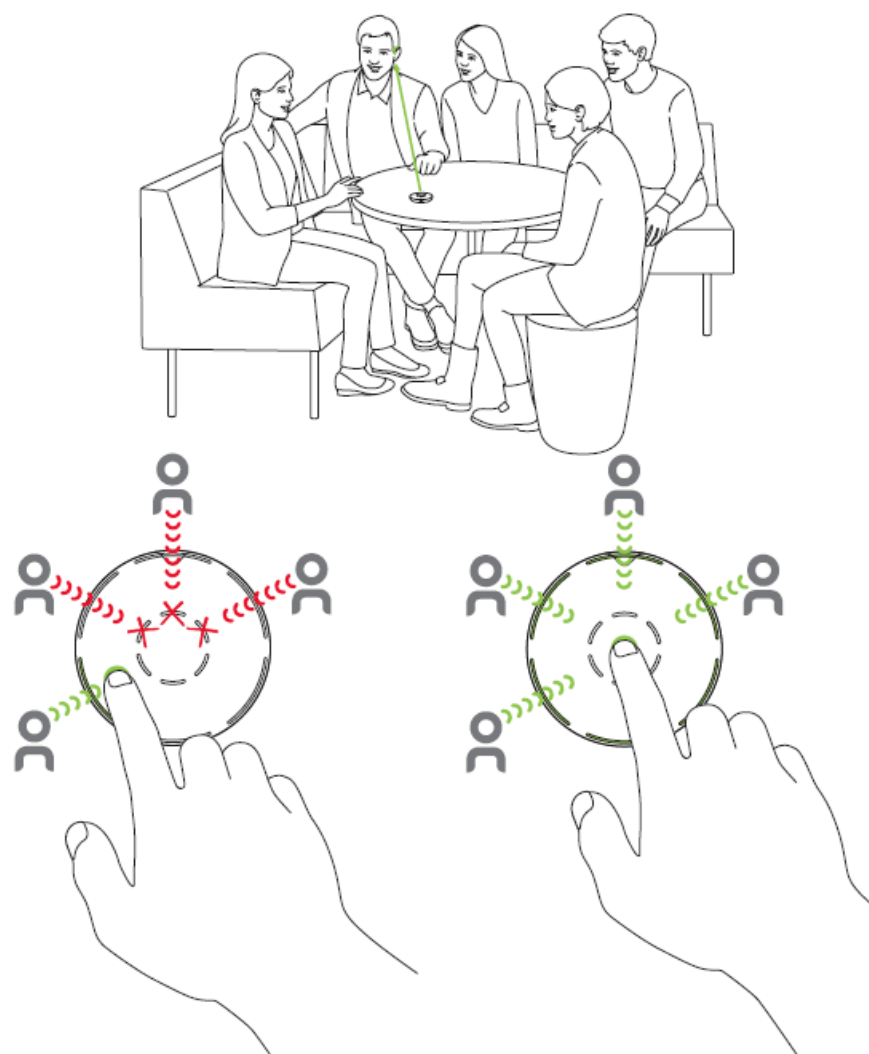


Connecting

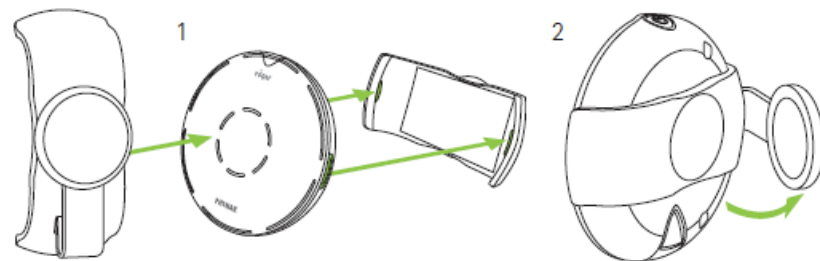
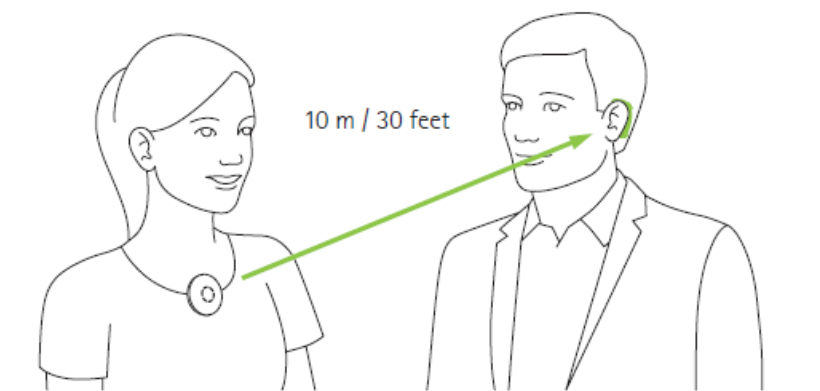


Using Instructions

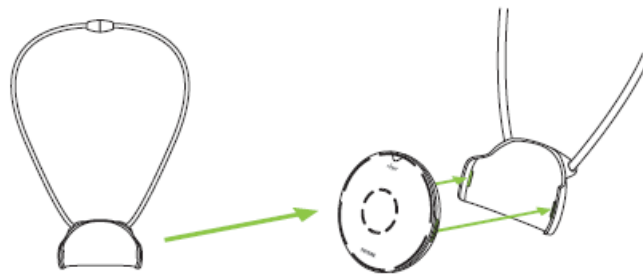
Use on the table



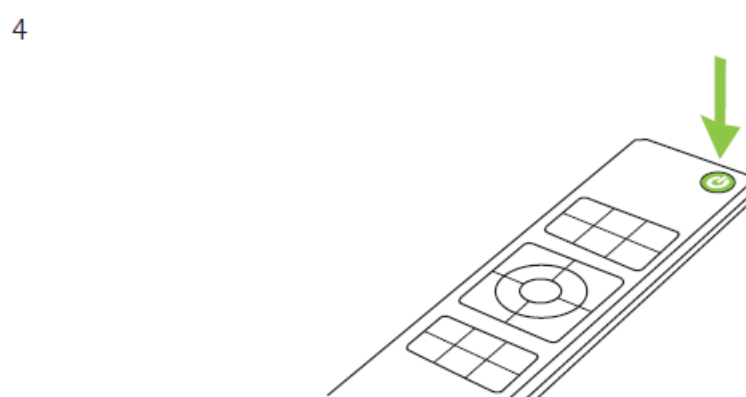
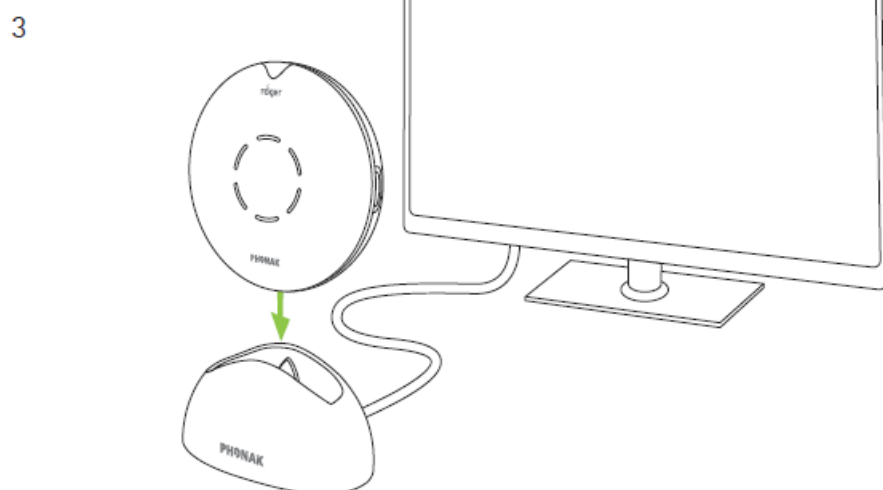
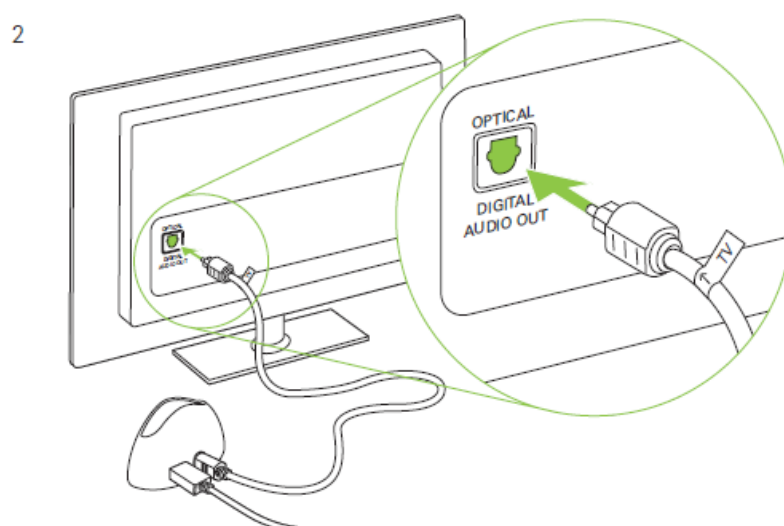
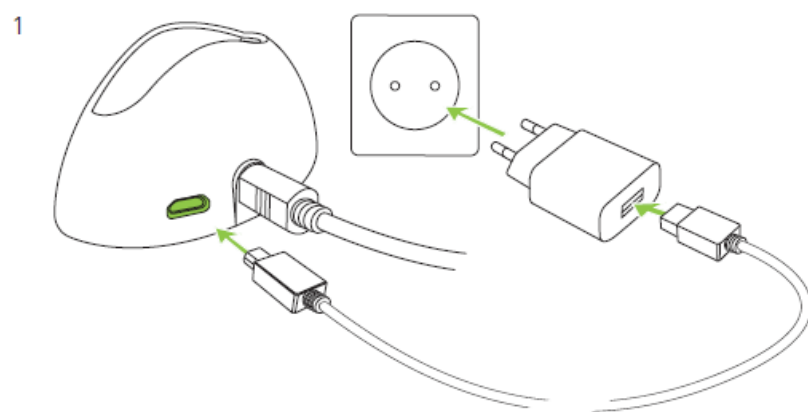
Use with a speaker



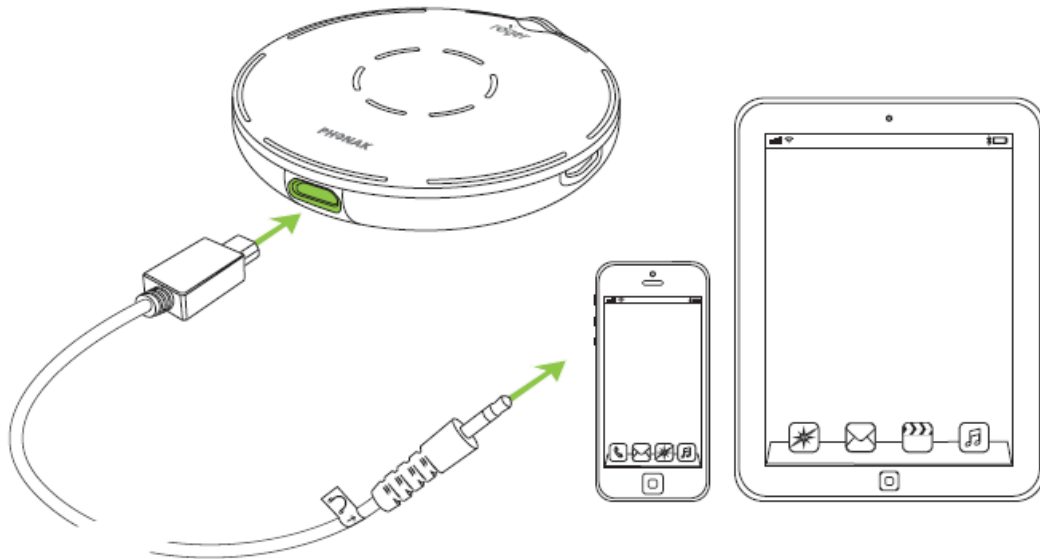
or / oder / ou / of



Use with the TV



Use with an audio device



FAQ

Frequently Asked Questions

- **Q:** How do I know when the Roger Select is fully charged?
 - **A:** The Roger Select typically indicates a full charge either through a visual indicator on the device or by displaying a specific color when charging is complete.
- **Q:** Can I use the Roger Select with any Bluetooth-enabled device?
 - **A:** The Roger Select may have specific compatibility requirements. Refer to the user manual or contact customer support for a list of compatible devices.
- **Q:** How can I adjust the volume on the Roger Select?
 - **A:** Volume adjustment methods may vary based on the connected device. Refer to the specific device's instructions for volume control while using the Roger Select.

More Information

For further information, please refer to the User Guide.


Manufacturer:

- Sonova Communications AG
- Herrenschwandweg 4 CH-3280 Murten Switzerland
- www.phonak.com/roger

029-3369-49/V1.00/2024-03/na © 2024 Sonova AG All rights reserved



Documents / Resources



[PHONAK 3 Roger Select \[pdf\] User Guide](#)
3 Roger Select, Roger Select, Select

References

- [User Manual](#)

[Manuals+](#), [Privacy Policy](#)

This website is an independent publication and is neither affiliated with nor endorsed by any of the trademark owners. The "Bluetooth®" word mark and logos are registered trademarks owned by Bluetooth SIG, Inc. The "Wi-Fi®" word mark and logos are registered trademarks owned by the Wi-Fi Alliance. Any use of these marks on this website does not imply any affiliation with or endorsement.