



Phomemo PM-246S Address Label Printer Installation Guide

[Home](#) » [Phomemo](#) » Phomemo PM-246S Address Label Printer Installation Guide 

Phomemo®

PM-246S Driver Installation
Mac & Win 10

Contents

- [1 Driver Installation](#)
- [2 Documents / Resources](#)
 - [2.1 References](#)
- [3 Related Posts](#)

Driver Installation

Download the driver from www.phomemo.com or USB Driver You can check the video to know: How to setup PM-246S <https://phomemo.com/pages/pm246s>

1. Driver Installation on Mac

1. Before installation, please ensure the printer is connected and turned on!
2. Double-click the “pkg” installer to begin.
3. If the driver can not open, because it is from the unidentified developer when installing the driver, please follow the steps below to allow the macOS to finish the installation.

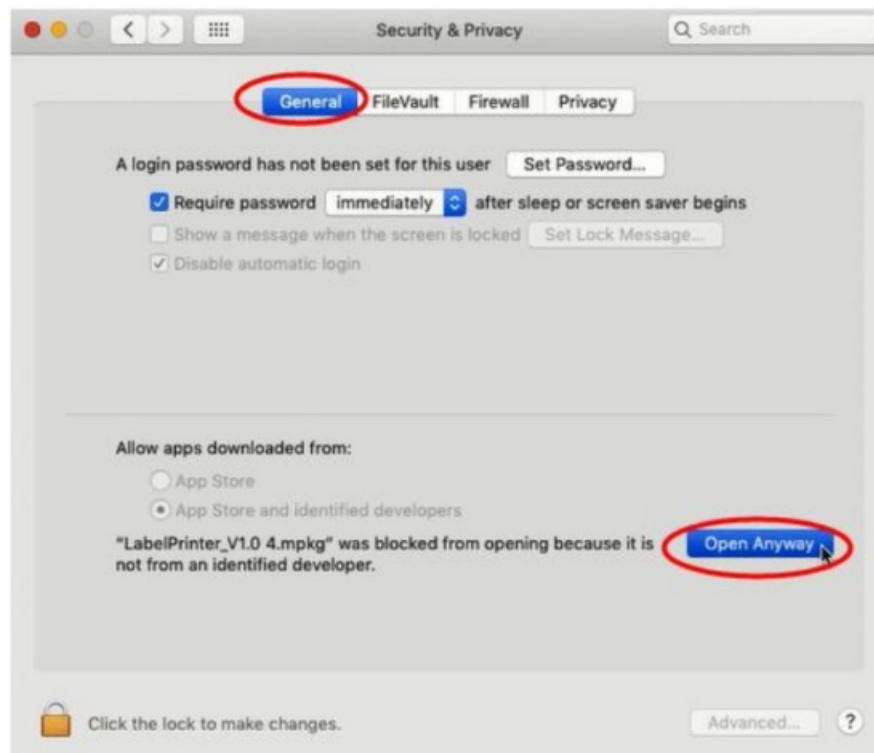
1.1 Setting Security & Privacy on Mac

You can check this video to know: Setting Security & Privacy before installing the driver on Mac
“<https://www.youtube.com/watch?v=OAFHpEqqxaE>”

1. Click "" and go to "System Preferences" -> select "Security & Privacy"



2. Under "General", click "Open Anyway" to set up

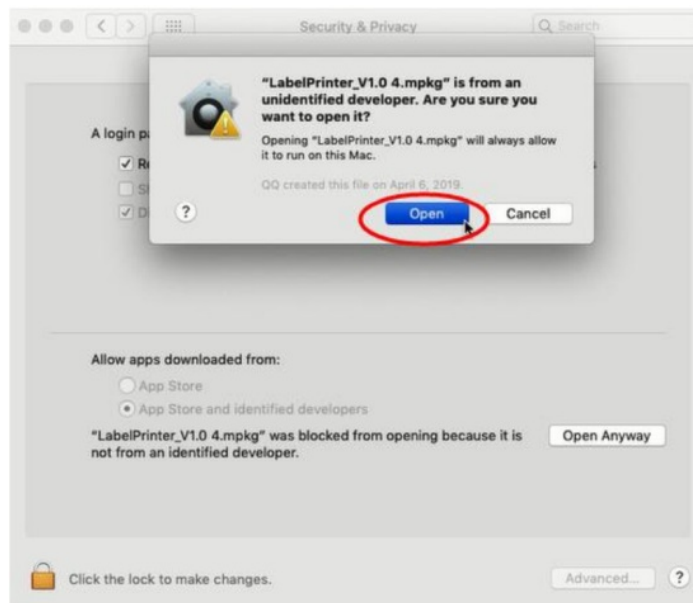


3. Input your "Password" of your Mac. Then click "Modify Settings".

Note: If you do not need to set a password, please skip this step.



4. Click "Open", then you can continue to install the driver.



ATTENTION: Before installation please ensure the printer is connected and turned on.



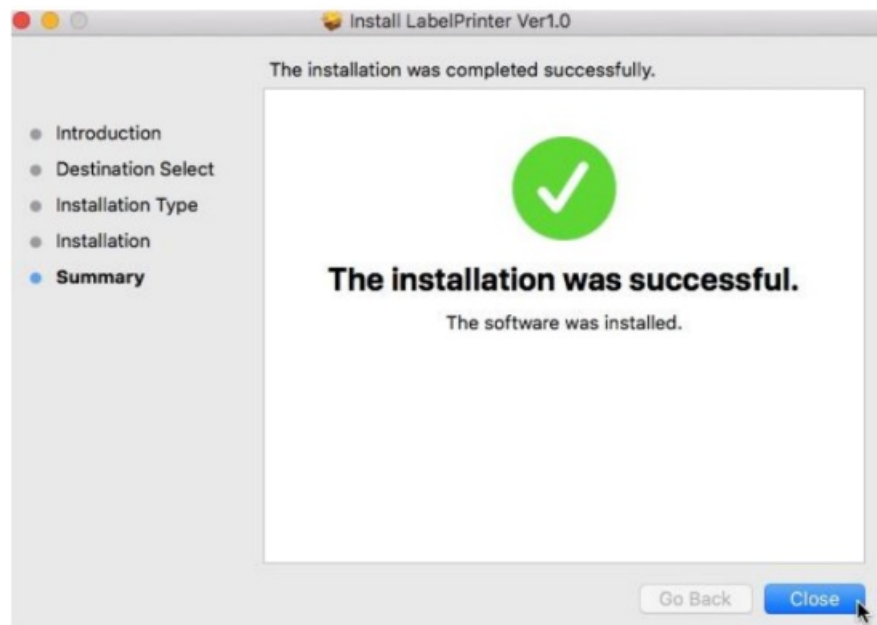
1.2 Installing Driver on Mac

You can check this video to know: Installing Label Printer Driver and Prepare before use PM246S on Mac

[https://www.youtube.com/watch?](https://www.youtube.com/watch?v=s2cb4OHu2gw&list=PL3_AhQ0D1H_DgoSgYcMdUBrRnBCitKvP1&index=2)

[v=s2cb4OHu2gw&list=PL3_AhQ0D1H_DgoSgYcMdUBrRnBCitKvP1&index=2](https://www.youtube.com/watch?v=s2cb4OHu2gw&list=PL3_AhQ0D1H_DgoSgYcMdUBrRnBCitKvP1&index=2)

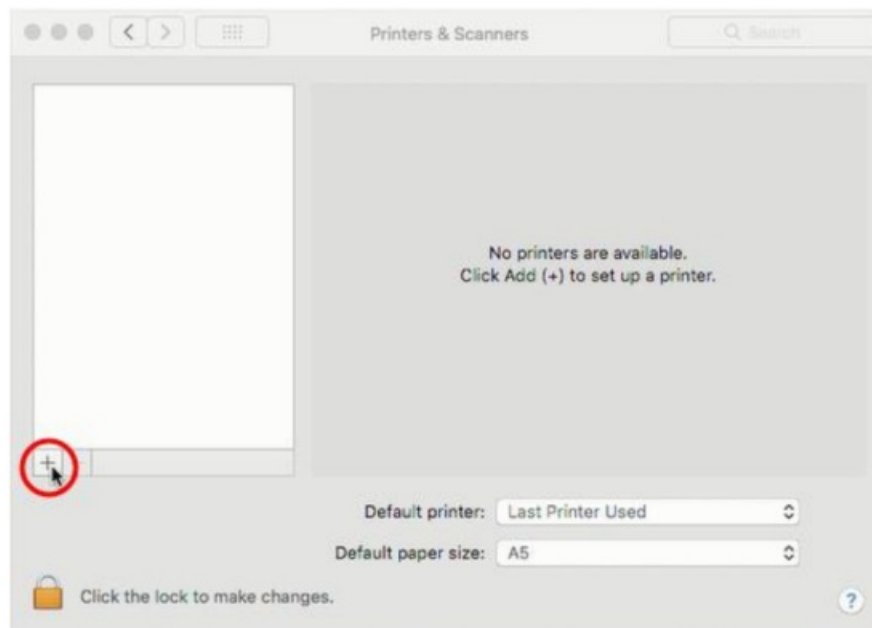
1. Follow the installation steps until you receive the "Installation was successful" message.



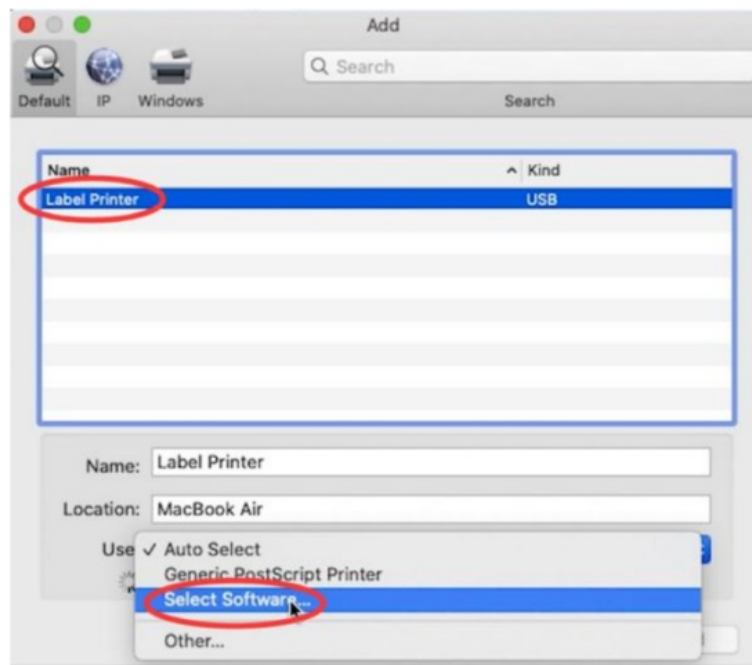
2. Click "🍏" and go to "System Preferences" -> select "Printer & Scanners"



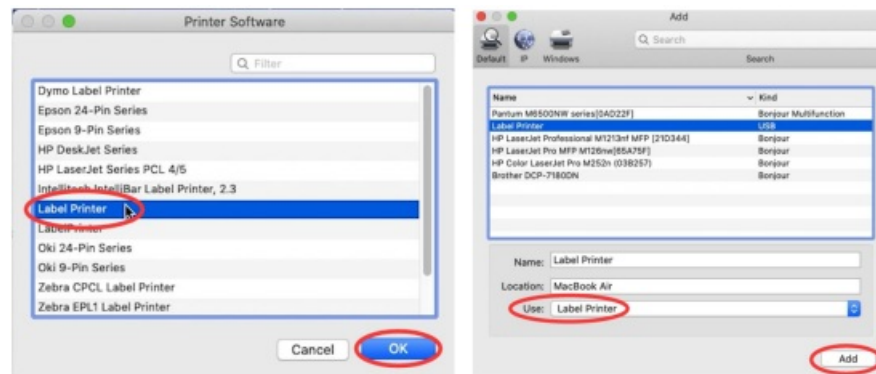
3. Click "+" to add a printer



4. Select "Label Printer"-> Click "Select Software" under "Use"

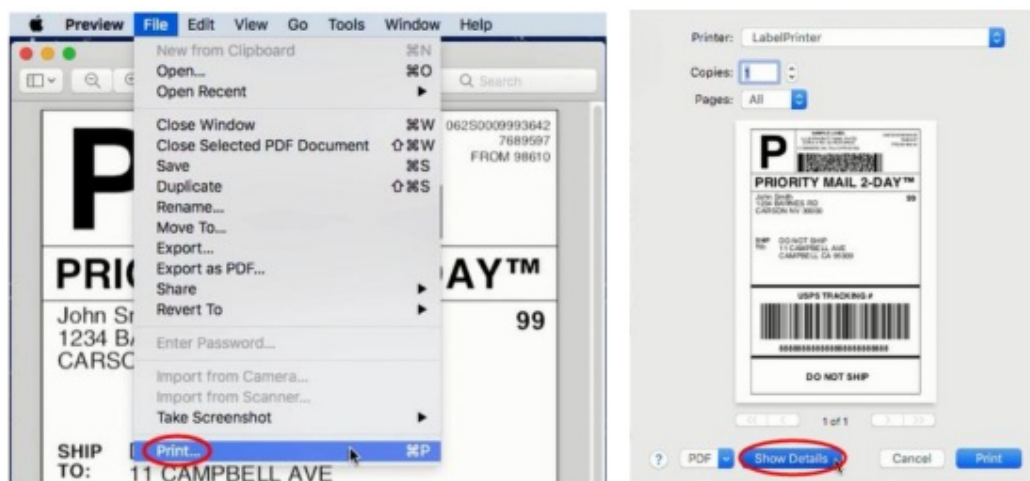


->Select "Label Printer" and click "OK" ->Click "Add"



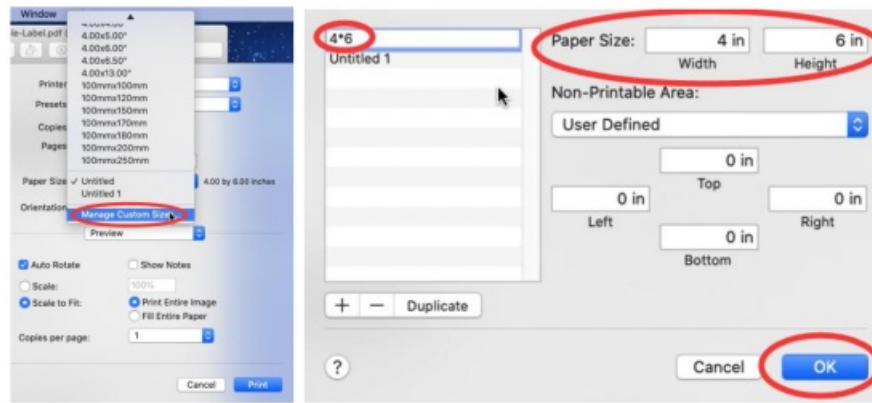
1.3 Prepare before use on Mac

1. Open desired file (e.g. a PDF). Click "File" and choose "Print". Select "Show Details"

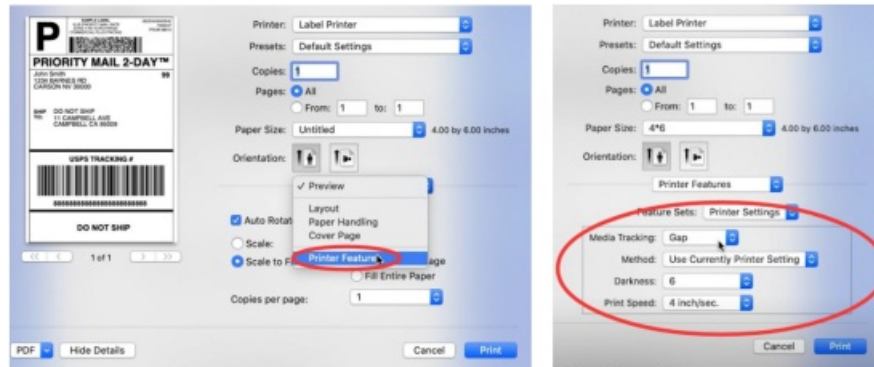


2. Choose a paper size from "Paper Size".

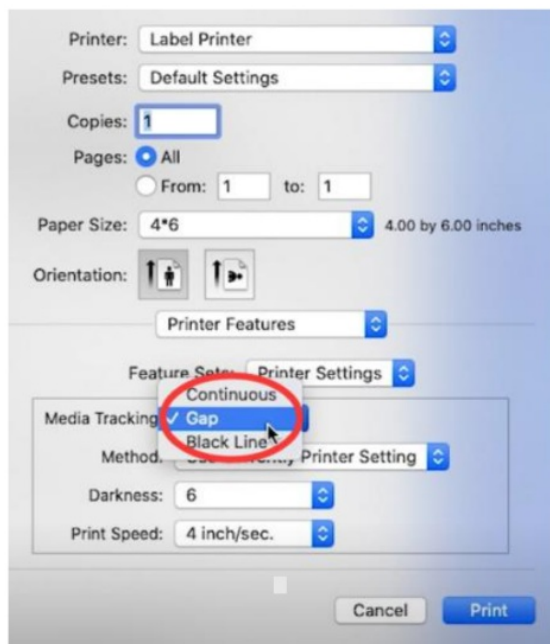
If the size you need is not listed, then click "Manage Custom Sizes", input width and height, then click "OK".



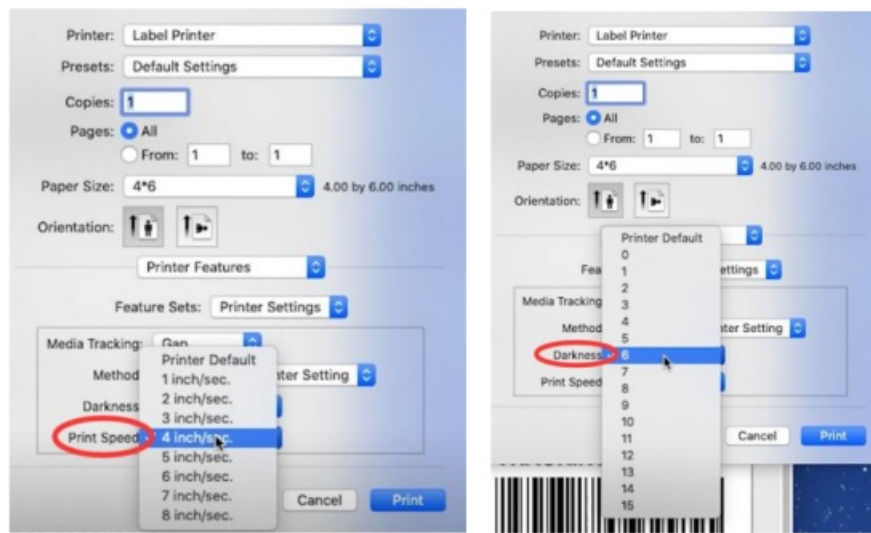
3. Select "Printer Features" in "Preview", you can set up printer properties, such as "Media Tracking", "Darkness" and "Print speed".



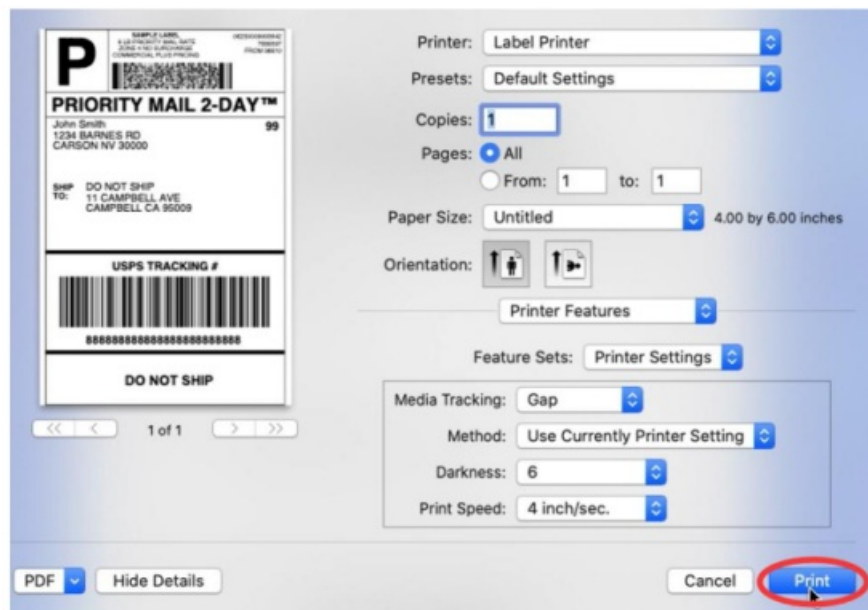
4. Select paper type in "Media Tracking". Choose from "Continuous", "Gap" or "Black Line".



5. You can change the printing speed and the Darkness of your printing (Larger number means higher Darkness)



6. After setup, click “Print”



2. Driver Installation on Win

You can check this video to know: Installing Label Printer Driver and Prepare before use PM246S on Win 10
<https://www.youtube.com/watch?v=3PFV7NPRwSA>”

1. Double click the installer to begin. Follow the installation steps until finished.

ATTENTION: Before installation, please ensure the printer is connected and turned on!

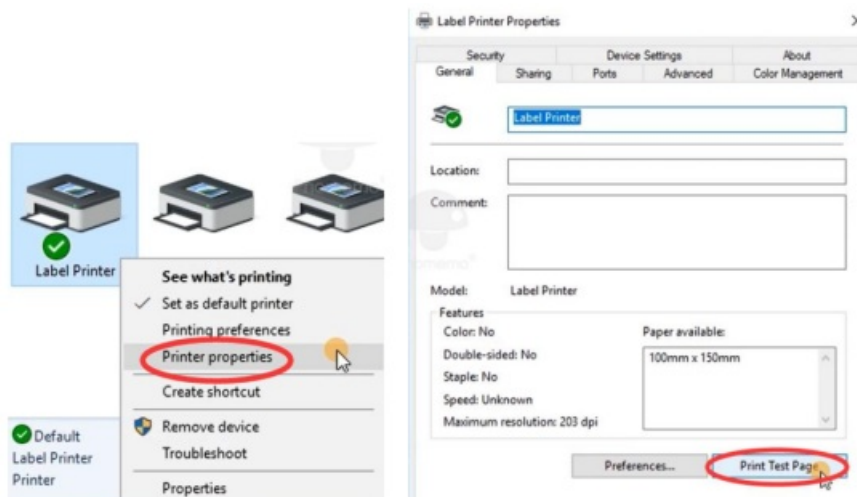


2. After installation, to check the printer is connected successfully:

① Go to "Control panel" -> "Devices and Printers" (Right-click on "This PC", choose "Properties", then click on "Control panel"-> "Devices and Printers")

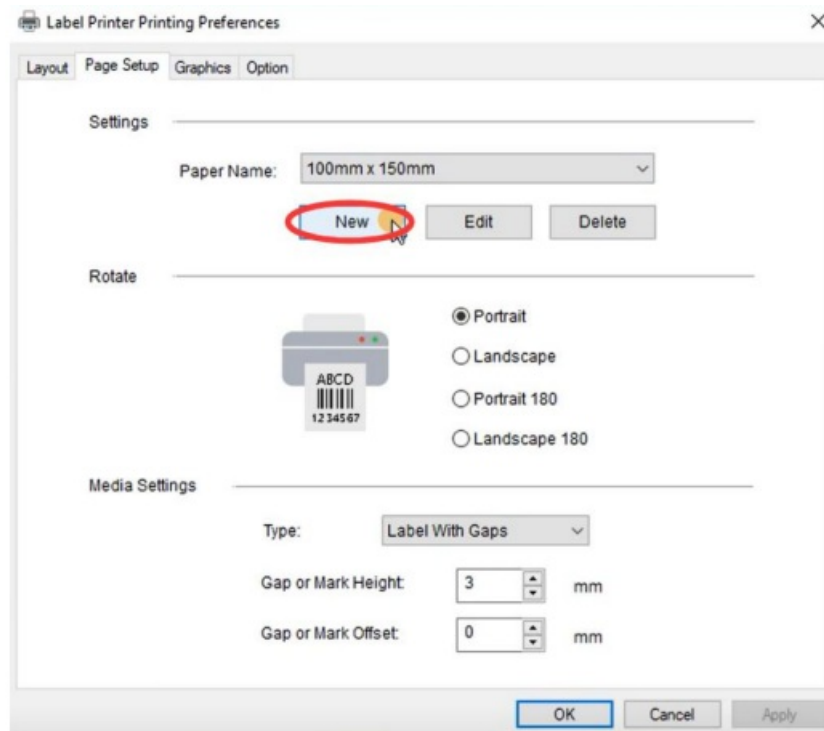


② Right click on "Label Printer" -> "Printer Properties"-> Click on "Print Test Page"

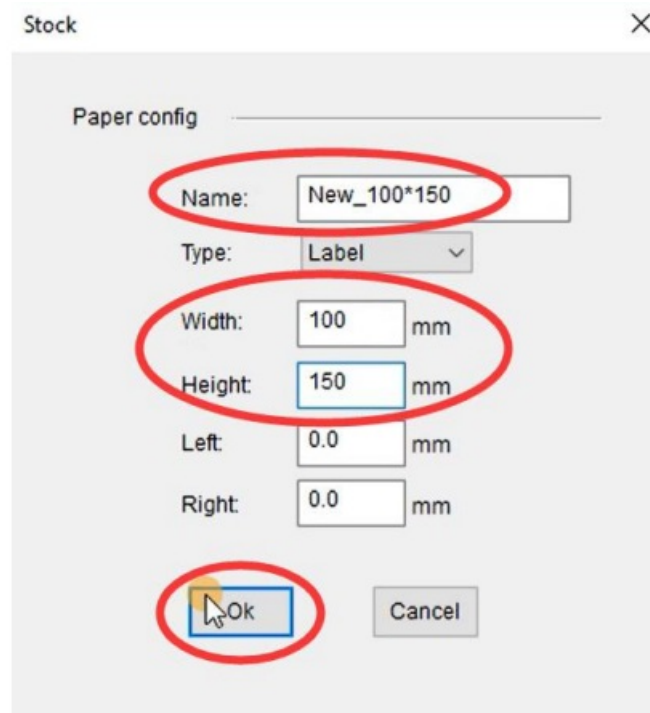


3. Set as default printer:

① Right click on "Label Printer" -> "Set as default printer"

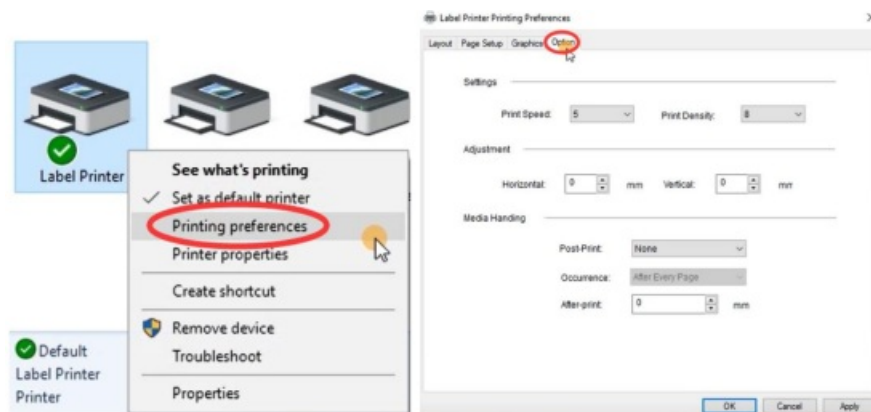


④Change Paper name and input width and height, click “OK”



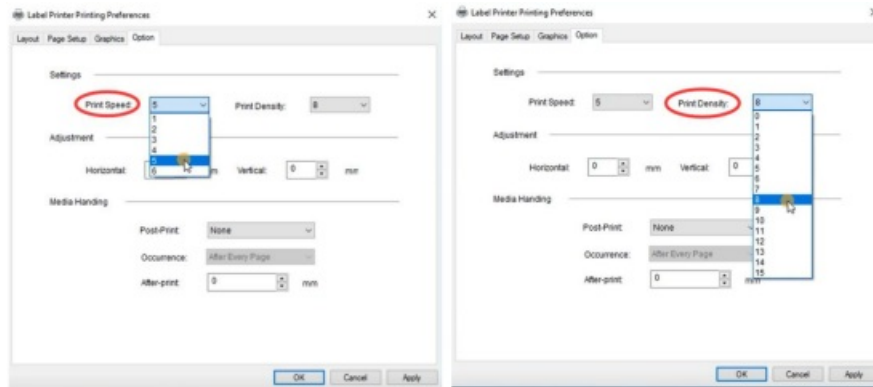
5. Set up Print speed and Darkness

①Right click on “Label Printer” -> choose “Printer Preferences”-> go to “Option”



②You can change the printing speed and the Darkness of your printing (Larger number means higher

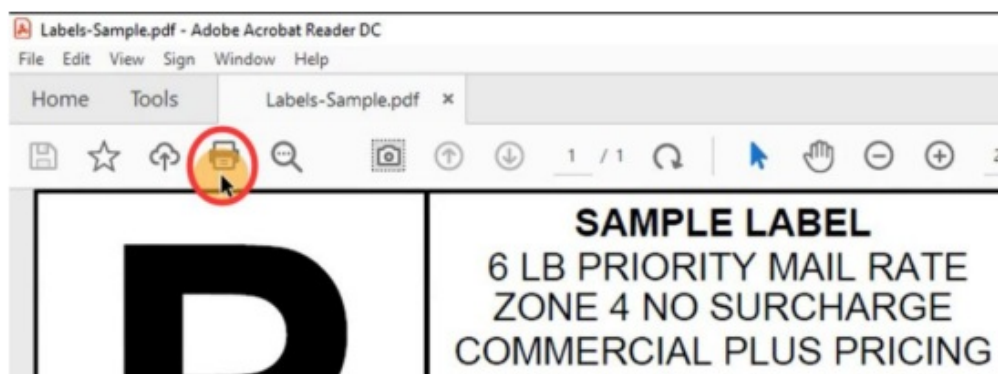
Darkness)



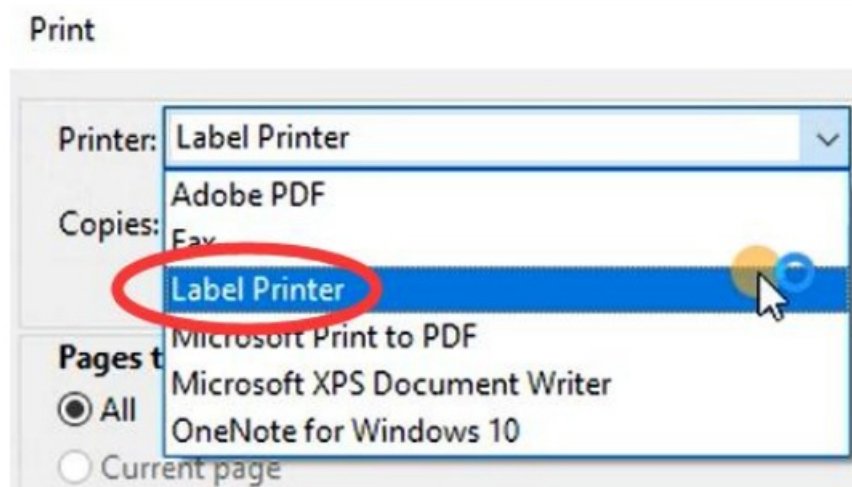
6. Choose file (PDF file) to print.



①Click “Print”



②Select Printer “Label Printer”



③Before clicking Print, check the preview and print size.



Support

Your Phomemo PM-246S is covered by a one-year warranty.

In the unlikely event that you experience any issues with your printer, please contact Phomemo priority customer service to promptly receive troubleshooting tips for a replacement.

Contact information:

Whatsapp 1: +86 13928088284 Whatsapp 2: +86 15338193665

Skype 1: Phomemo Team-Jessie

Skype 2: Phomemo Team-Helen

Customer Service phone number (the United States only): +1 855 957 5321

Service time: Mon-Fri 9 AM-5 PM (EST)

For any questions and/or suggestions, please email the Phomemo team at support@phomemo.com, or visit www.phomemo.com and click on "Support".

For more videos, please visit: www.youtube.com

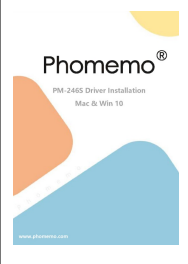
- Search for "Phomemo" and go to the home page
- Search for your purchased printer model (i.e PM-246S)
- You will find the tutorial videos for an easy setup

The Following is the Troubleshooting of the Phomemo Label Printer, hope to help you in simple troubleshooting.

Phomemo®

www.phomemo.com

Copyright © 2019 Phomemo Powered by QUYIN TECHNOLOGY CO., LT

	<p>Phomemo PM-246S Address Label Printer [pdf] Installation Guide</p> <p>Thermal Label Printer, Shipping Label Printer, Label Printer for Shipping Packages, Label Printers for Small Business, Barcode Printer, PM-246S Address Label Printer, PM-246S, Address Label Printer</p>
---	--

References

- [🔴 Mini Portable Thermal Printer | Phomemo American Express Apple Pay Diners Club Discover JCB Mastercard PayPal Venmo Visa](#)
- [🔴 PM246s – Phomemo American Express Apple Pay Diners Club Discover JCB Mastercard PayPal Venmo Visa](#)
- [🔴 Win10 Driver version V110: PM-246S Installing Label Printer Driver and Prepare before use - YouTube](#)
- [🔴 Mac: Setting Security & Privacy before installing driver - YouTube](#)
- [🔴 Mac: PM-246S Installing Label Printer Driver and Prepare before use - YouTube](#)