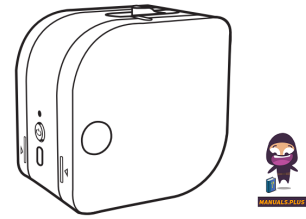


Phomemo P12 Label Maker



Phomemo P12 Label Maker User Guide

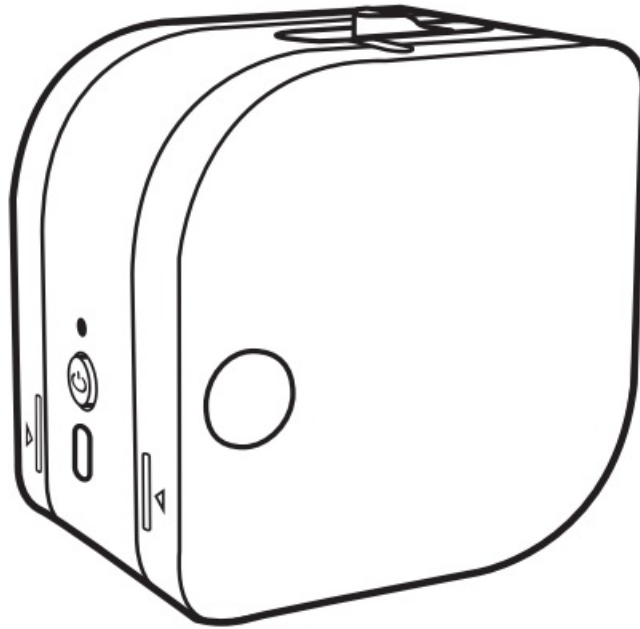
[Home](#) » [Phomemo](#) » Phomemo P12 Label Maker User Guide 

Contents

- 1 [Phomemo P12 Label Maker](#)
- 2 [Product Information](#)
- 3 [Frequently Asked Questions](#)
- 4 [Product Introduction](#)
- 5 [Printer Parts Instruction](#)
- 6 [Getting Started](#)
- 7 [Power Supply Instructions](#)
- 8 [Replacing the Label Ribbon](#)
- 9 [Cleaning and Maintenance](#)
- 10 [More Connection Methods](#)
- 11 [Additional Instructions](#)
- 12 [Accessing Detailed Online Guide](#)
 - 12.1 [OCR Result\(Auto-Detect\)](#)
 - 12.2 [Translated\(English\)](#)
- 13 [Documents / Resources](#)
 - 13.1 [References](#)

Phomemo

Phomemo P12 Label Maker



Product Information

Specifications

- Model: HVINP FVIN
- FCC Warning Statement
- IC Warning Statement
- CAN ICES(B)/NMB(B)
- Compliance: Innovation, Science and Economic Development Canada's license-exempt RSS(s)

Frequently Asked Questions

- **Q: What should I do if the device causes interference?**

A: If the device causes interference, try repositioning it or moving it away from other electronic devices. Ensure proper placement and connections to minimize interference.

- **Q: How can I report interference issues?**

A: You can report interference issues to the relevant regulatory authorities for further investigation and resolution. Provide details of the interference experienced and steps taken to mitigate it.

- **Q: Can I modify the device to reduce interference?**

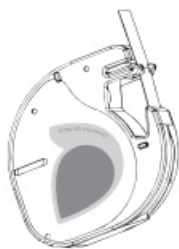
A: No, modifying the device may void compliance and regulatory certifications. It is recommended to use the device as intended and follow operating guidelines to minimize interference.

Product Introduction

Packing List



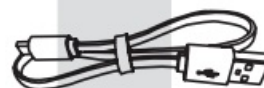
Printer
×1



Label Ribbon
12mm*4 m



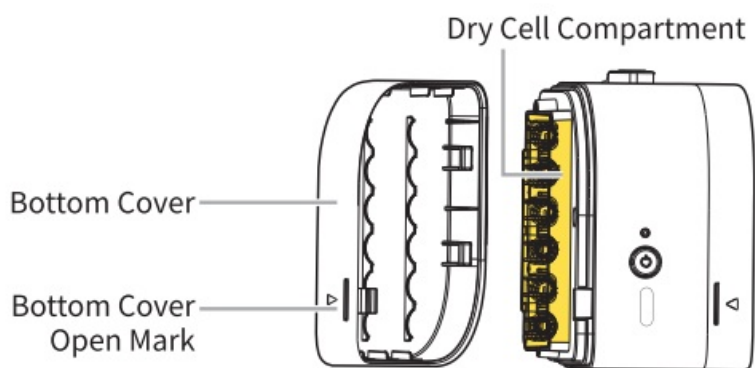
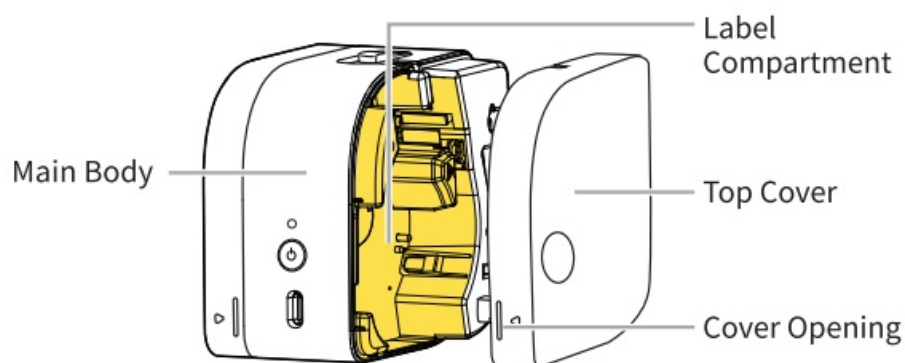
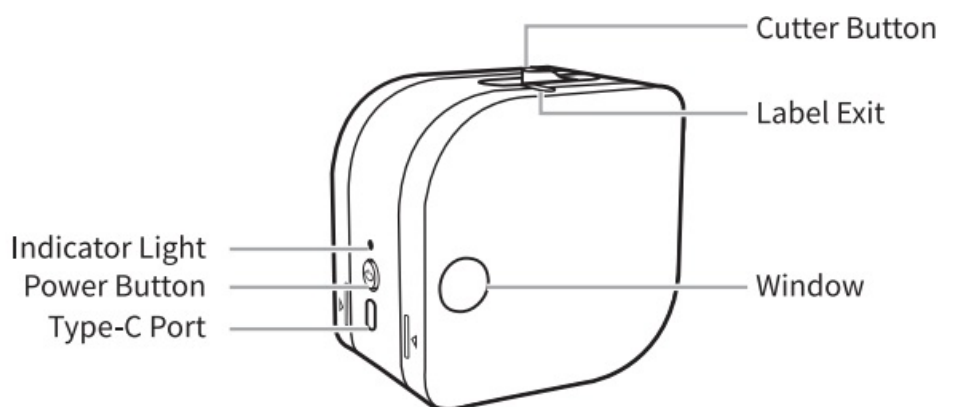
Quick Start Guide
×1



Type-C Cable
×1

The complimentary ribbon has been installed in the printer and can be seen through the Window.

Printer Parts Instruction



Getting Started

Downloading the App

Method 1: Search for the “Print Master” app on App Store® or Google Play™ to download and install it.



Method 2: Scan the QR code to download the app. Simply scan the code with your cell phone’s camera, the built-in scanning feature of your browser, or a dedicated scanning app.

As the Safari browser on Apple devices does not support direct QR code scanning, please use your device’s built-in QR code scanner instead.

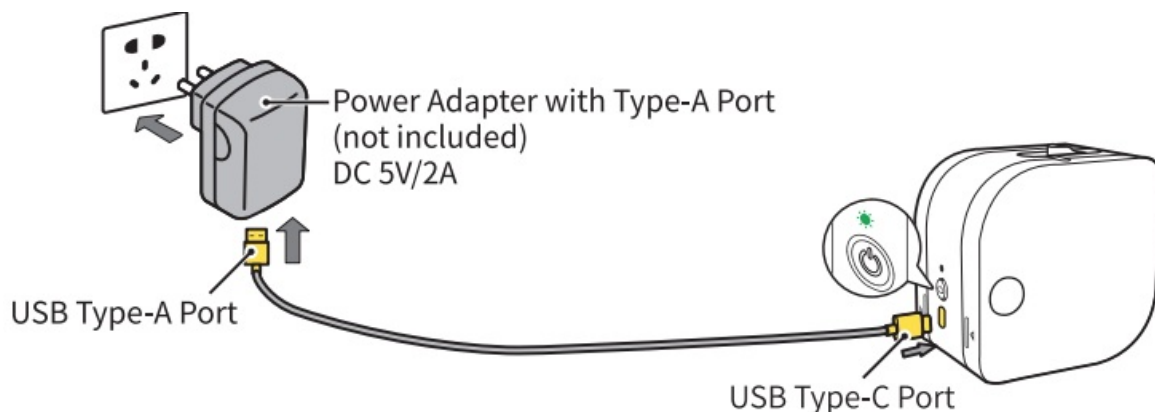


Power Supply Instructions

Method 1: Direct Power Supply via Type-C Cable

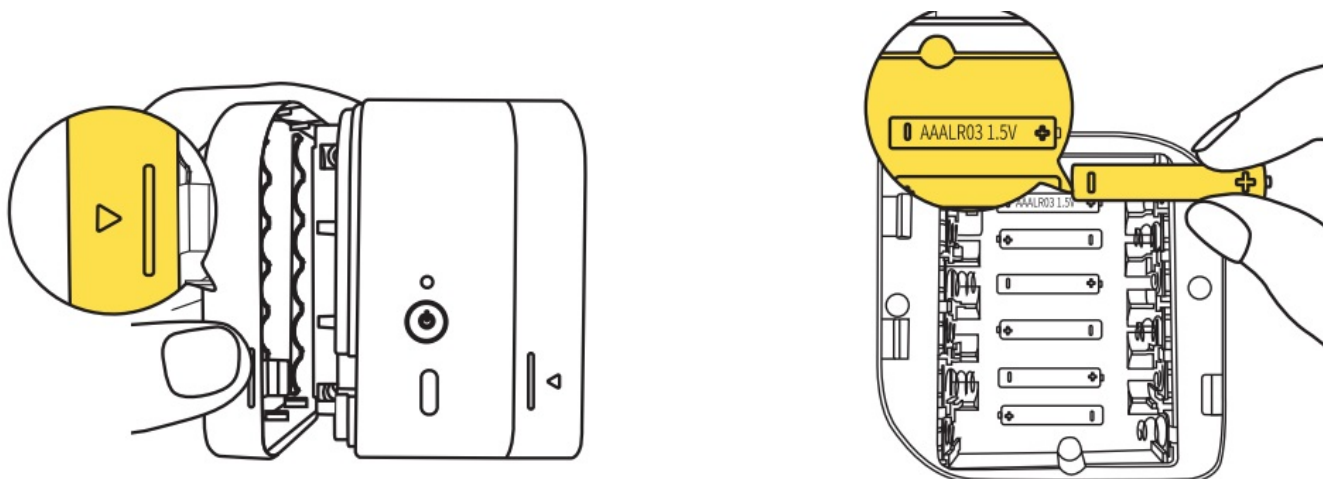
1. Ensure you have a Type-A port adapter that supplies 5-volt, 2-amp DC power
2. Insert the Type-C end (flat end) of the USB cable into the Type-C Charger Port of P12 and connect the Type-A end (narrow end) into the corresponding port of the power adapter.
3. Once the printer is connected to a power outlet via the power adapter, power it up by long pressing the Power Button for 3 seconds until the Indicator Light illuminates steadily in green.
4. As the printer may generate heat during operation when powered, please avoid placing it on materials such as cotton or linen when it is in use. After printing is completed, promptly unplug the original cable and the power adapter.

Powering the printer directly through the Type-C cable will not charge any installed dry cells.

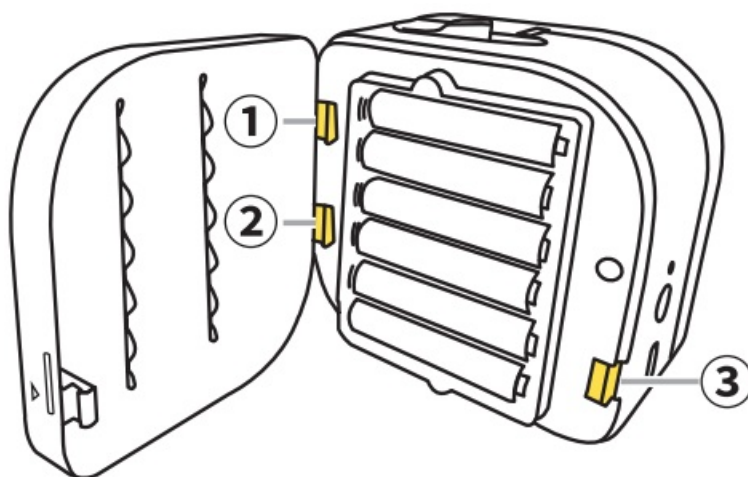


Method 2: Installing 6 New AAA Alkaline Dry Cells (User-supplied)

1. Find the Bottom Cover Open Mark, place your thumb on it, and pull open the Bottom Cover.
2. Properly insert the dry cells according to the positive and negative indicators within the Dry Cell Compartment.



3. Align the Bottom Cover hooks with holes 1 2 3 in the Main Body. Push the Bottom Cover inward until it clicks, which indicates that it has been securely closed.

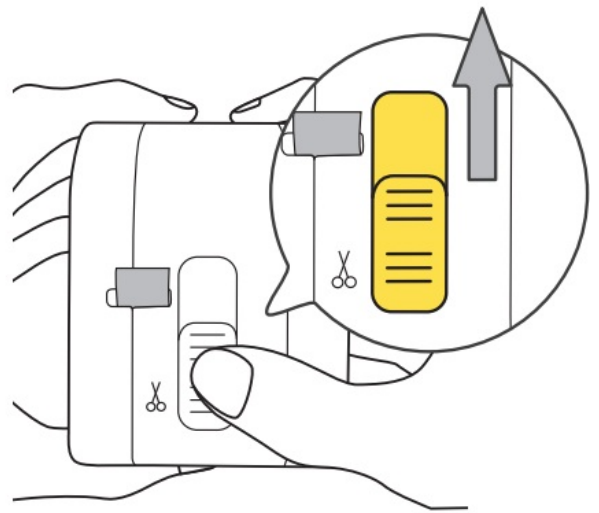
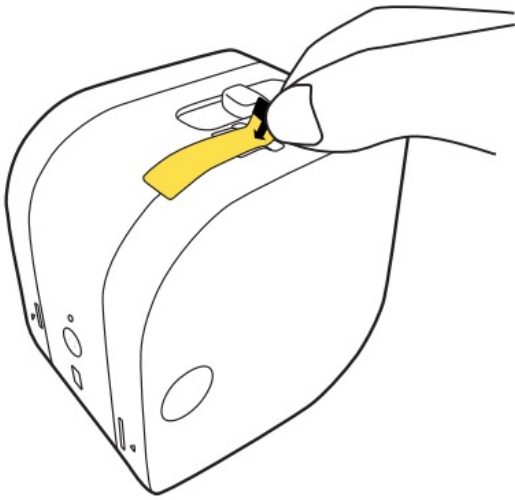


Upon installing the dry cells, power up the printer by long pressing the Power Button for 3 seconds. If the Indicator Light is not on or flashes red, please check:

1. if the dry cells are brand new;
2. if the dry cells are correctly inserted.

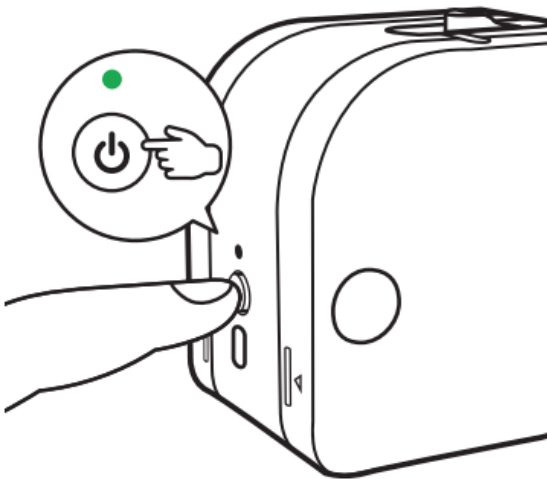
User Guide

1. Remove the protective film.
2. Push the Cutter Button to cut off the blank label



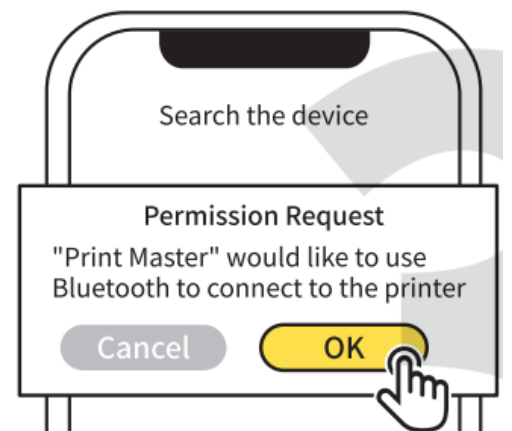
This step is required for first use.

3. Long press the Power Button for 3 seconds until the Indicator Light is green to power up the printer.
4. Open the “Print Master” app.



5. Click [Auto Connect].
6. Grant Authorization.

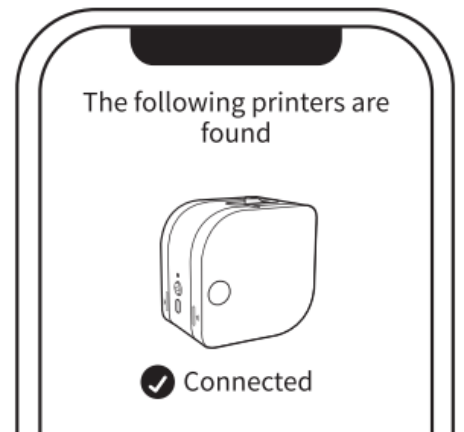
For more information about app permissions, see 6.2 Permission Description in the Online Guide.



7. Wait for the printer to be found.

You can also find manual connection options on [Home]. For more details, see 5. More Connection Methods in this guide.

8. The printer is successfully connected.



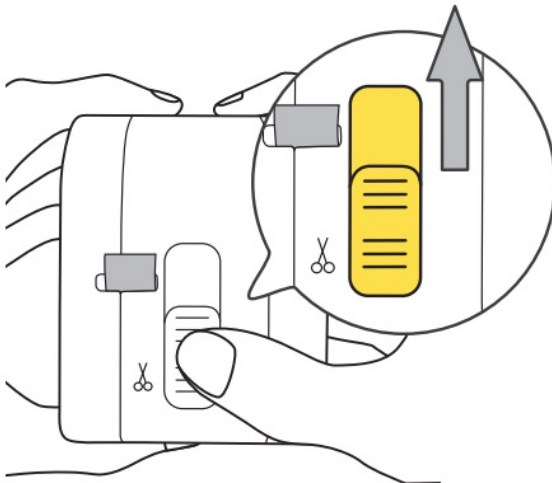
9. Edit your first label, and tap [Print] after you finish editing.

10. Printing is completed.



11. Push the Cutter Button and peel off the printed label.

12. Remove the carbon ribbon.



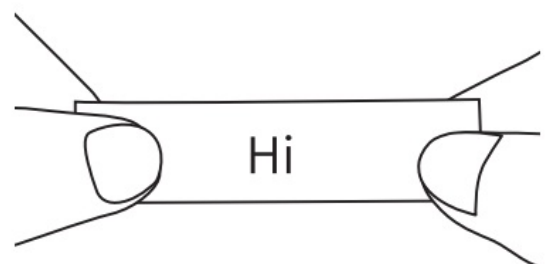
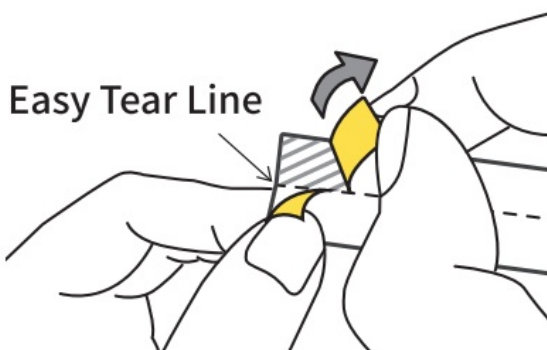
Remove the carbon ribbon.



⚠ Please skip this step if there is no carbon ribbon attached to the label.

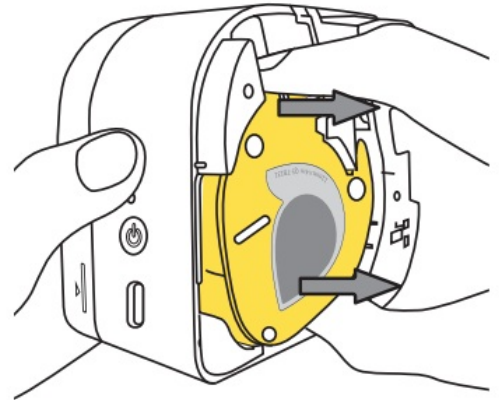
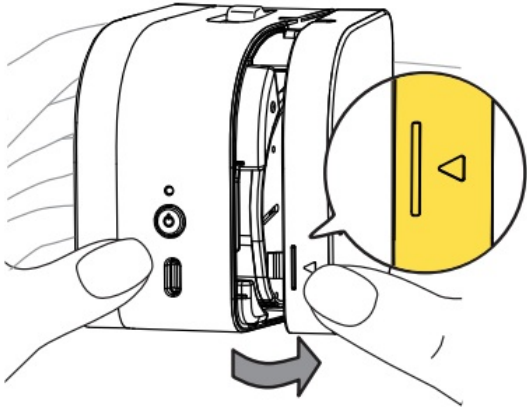
13. Peel off the back liner along the Easy Tear Line on the back of the label.

14. Attach the label to a dry, flat surface.

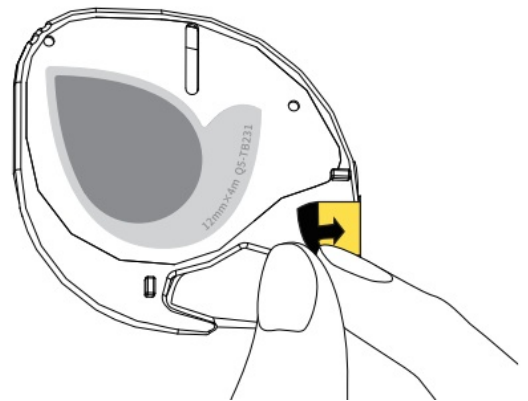
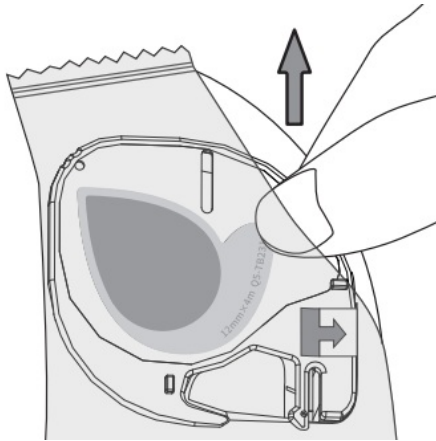


Replacing the Label Ribbon

1. Place your thumb on the Cover Opening and pull it outward to open the Top Cover.
2. Remove the label ribbon to be replaced.



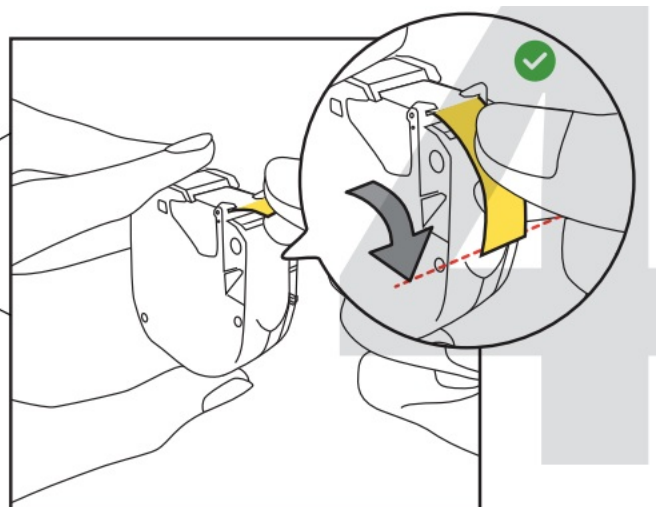
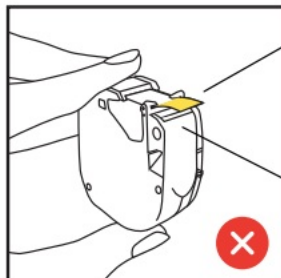
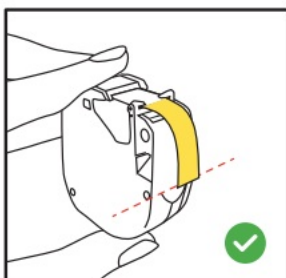
3. Take out a new label ribbon.
4. Remove the anti-loosening sticker.



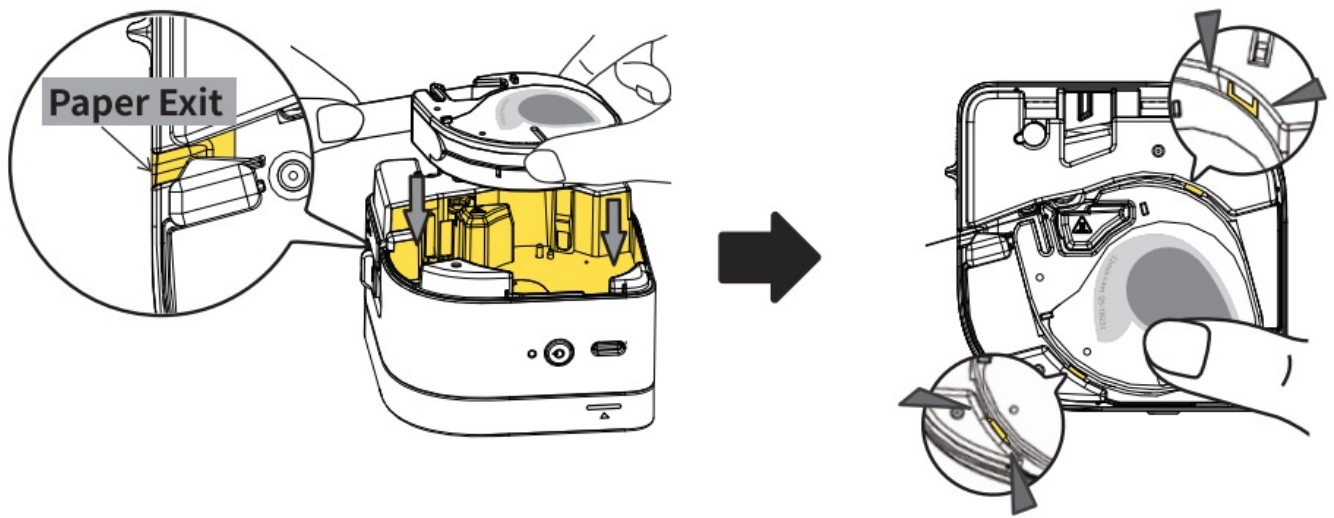
Please skip this step if there is no brand new label ribbon (Packaged in Bag) separately purchased.

Please skip this step if the label ribbon to be installed is not brand new.

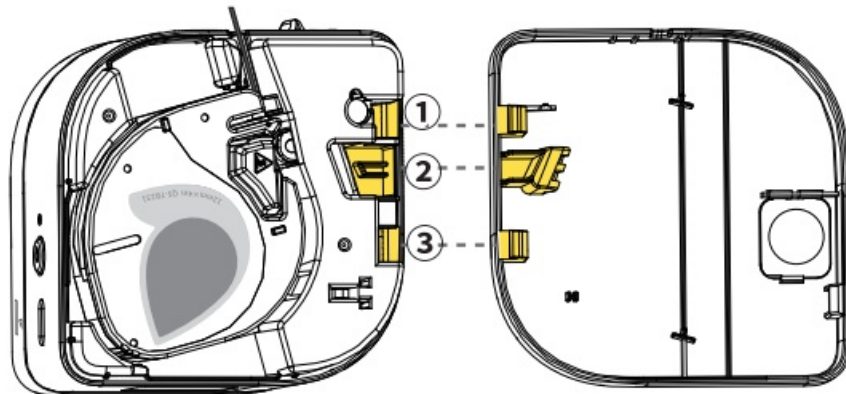
5. Check if the label ribbon has been pulled to the dashed line position as indicated in the diagram; if not, please follow the instructions on the right-hand diagram.



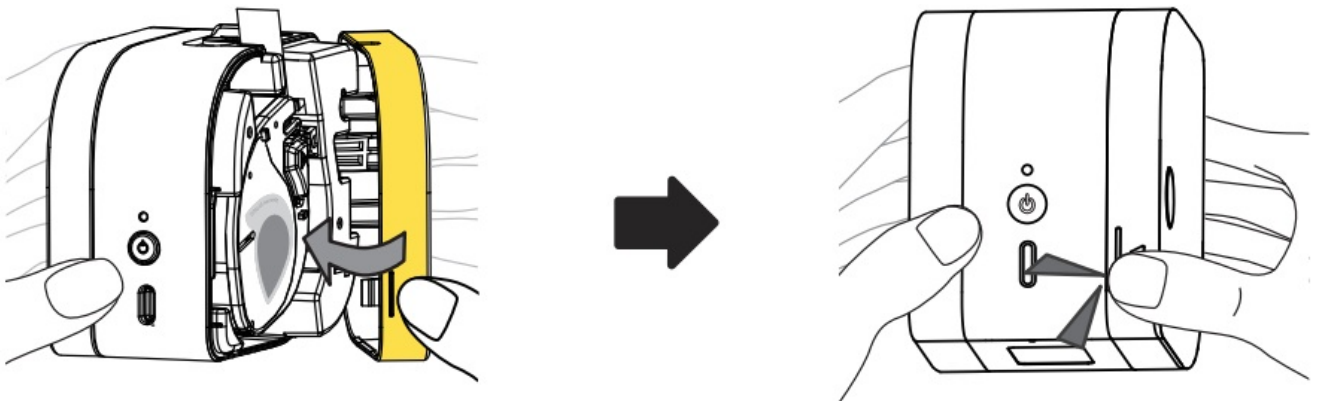
6. Place the label ribbon into the Ribbon Compartment and feed the extended ribbon into the Paper Outlet; then press down on the label ribbon until you hear a click, indicating the installation is complete.



7. Align the Top Cover clasps with marked holes 123 on the Main Body.



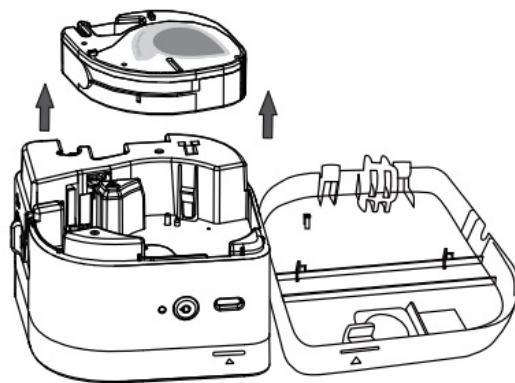
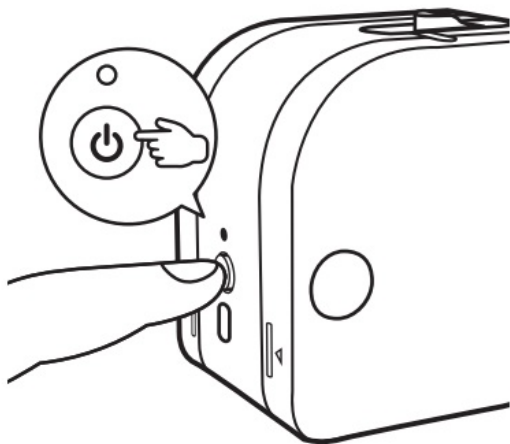
8. Push the Top Cover inward until it clicks, which indicates that it has been securely closed. Ribbon installation is now completed.



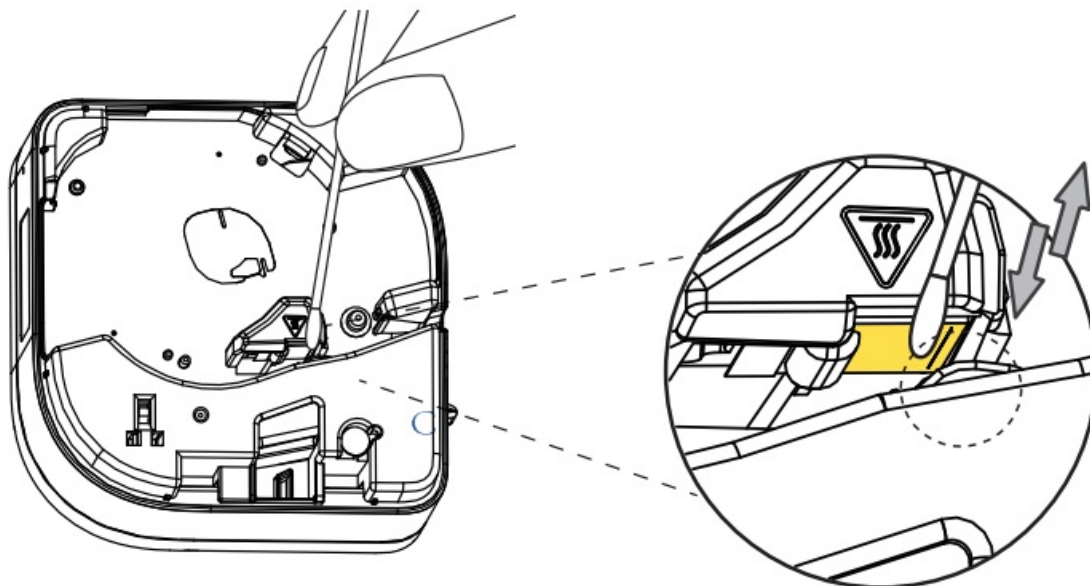
Cleaning and Maintenance

In the case of blurry print, try cleaning the Print Head. When the printer functions properly, it is recommended to perform cleaning and maintenance every 6 months.

1. Long press the Power Button for 3 seconds until the Indicator Light is off to turn off the printer.
2. Open the Top Cover and remove the label ribbon.

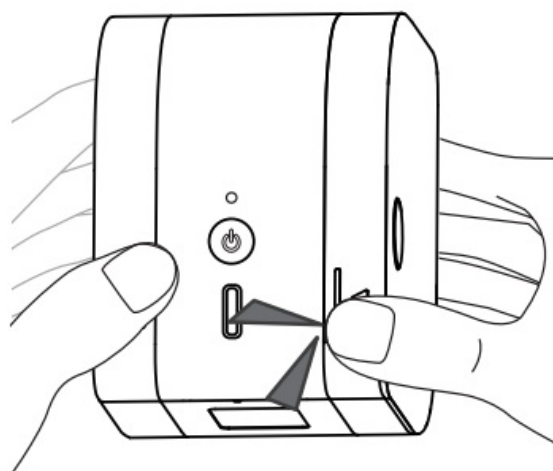
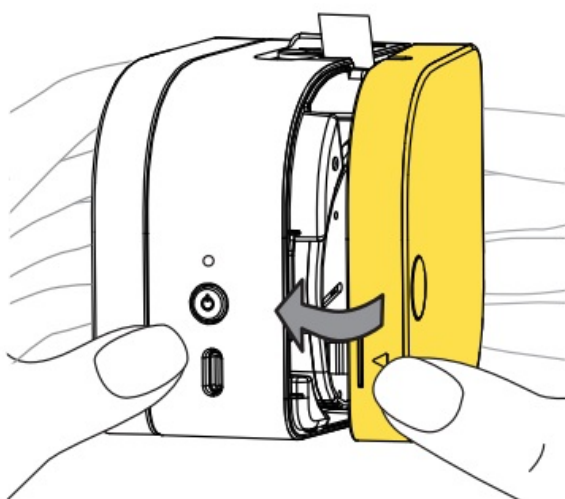


3. Use a cotton swab dipped in a small dab of alcohol to gently wipe the Print Head up and down about 10 times.



Please avoid scraping the Print Head with any hard objects, as it may cause damage to the Print Head and worsen print quality.

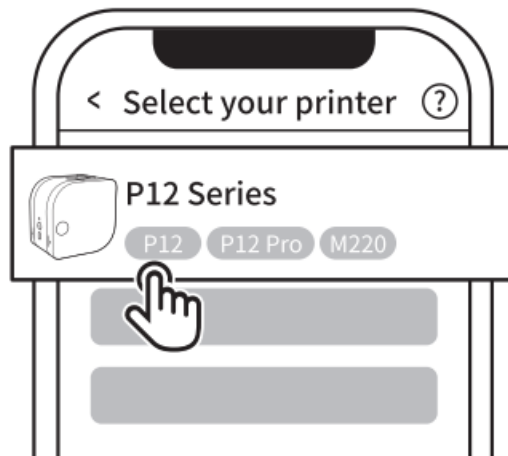
4. After wiping, wait 5 seconds for the alcohol to evaporate. Then, reinstall the label ribbon to complete the cleaning process.




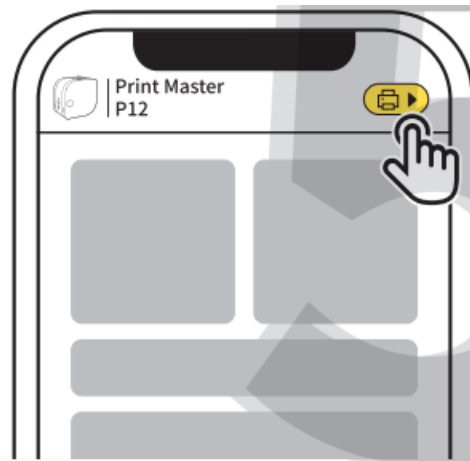
For detailed instructions on installing a label ribbon, see steps 05-08 in 3. Replacing the Label Ribbon in this guide.

More Connection Methods

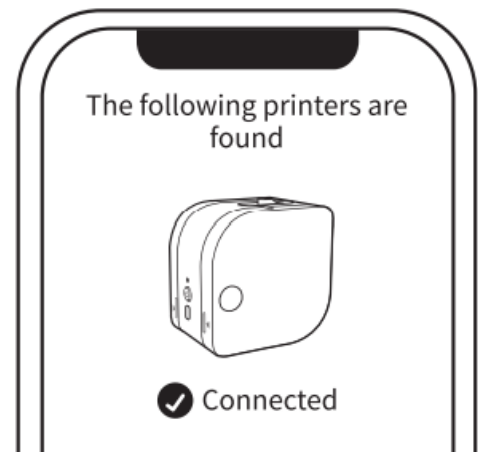
1. Select your printer.



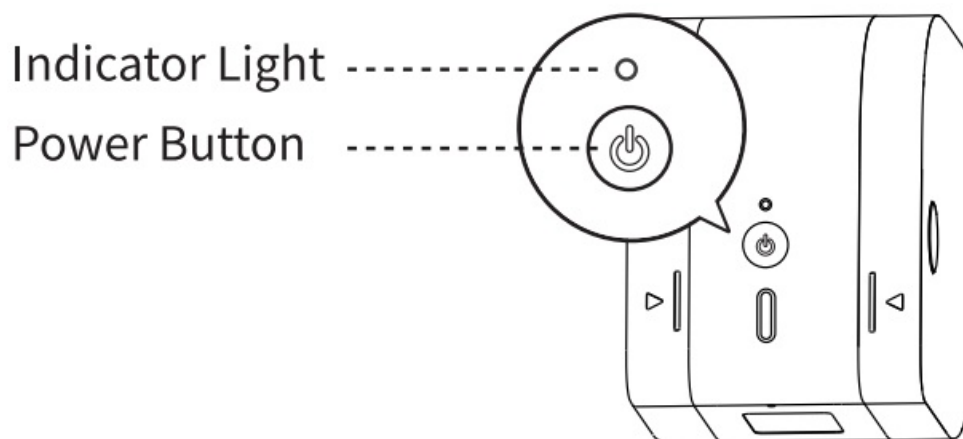
2. Tap [] at the top right corner for connection.




3. Wait for the printer to be discovered.
4. The printer is successfully connected.



Additional Instructions



Button Instructions

Button Type	Action	Function
 Power Button	Long press for 3s	Power on/off
	Double press	Print a self-test page

Indicator Light Instructions

Status	Description	Advised Action
● Solid Green Light	Device functioning properly	/
● Solid Red Light	Label ribbon missing/ No ribbon detected	Reinstall label ribbon
⚡ Flashing Red Light	Low battery	Please replace the alkaline dry batteries
Light remains off after long pressing Power Button for 3 seconds	Battery depleted	Please replace the alkaline dry batteries

For instructions on reinstalling the label ribbon, see 3. Replacing the Label Ribbon in this guide. For replacing Alkaline Dry Batteries instruction, see 2.2 Power supply Instructions in this guide.

Accessing Detailed Online Guide

Scan the QR code to access the Detailed Online Guide, video tutorials.



Special Notes

The company assumes full responsibility for the revision and explanation of this manual, exercising utmost diligence to guarantee its accuracy. Nevertheless, please note that any technical improvements to the product may not be separately notified, and that the images of the product, accessories, software interfaces, etc. in this manual serve solely as illustrations and references. Due to product updates and upgrades, the actual product may vary slightly from the images. Please refer to the physical product for accurate representations.

IC Warning statement

CAN ICES(B/ NMB(B

This device contains license-exempt transmitters)/receivers) that comply with Innovation, Science and Economic Development Canada's license-exempt RSS(s). Operation is subject to the following two conditions:


1. This device may not cause interference.
2. This device must accept any interference, including interference that may cause undesired operation of the device.

IC RF exposure statement:

The device has been evaluated to meet general IC RF exposure requirement. The device can be used in portable exposure conditions without restriction.

This device complies with part 15 of the FCC rules and RSS-247 of Industry Canada. Operation is subject to the following two conditions: (1) this device may not cause harmful interference, and (2) this device must accept any interference received, including interference that may cause undesired operation.

Documents / Resources

	Phomemo P12 Label Maker [pdf] User Guide 2ASRB-12P, 2ASRB12P, 12p, P12 Label Maker, P12, Label Maker, Maker
---	--

References

- [User Manual](#)

[Manuals+](#). [Privacy Policy](#)

This website is an independent publication and is neither affiliated with nor endorsed by any of the trademark owners. The "Bluetooth®" word mark and logos are registered trademarks owned by Bluetooth SIG, Inc. The "Wi-Fi®" word mark and logos are registered trademarks owned by the Wi-Fi Alliance. Any use of these marks on this website does not imply any affiliation with or endorsement.